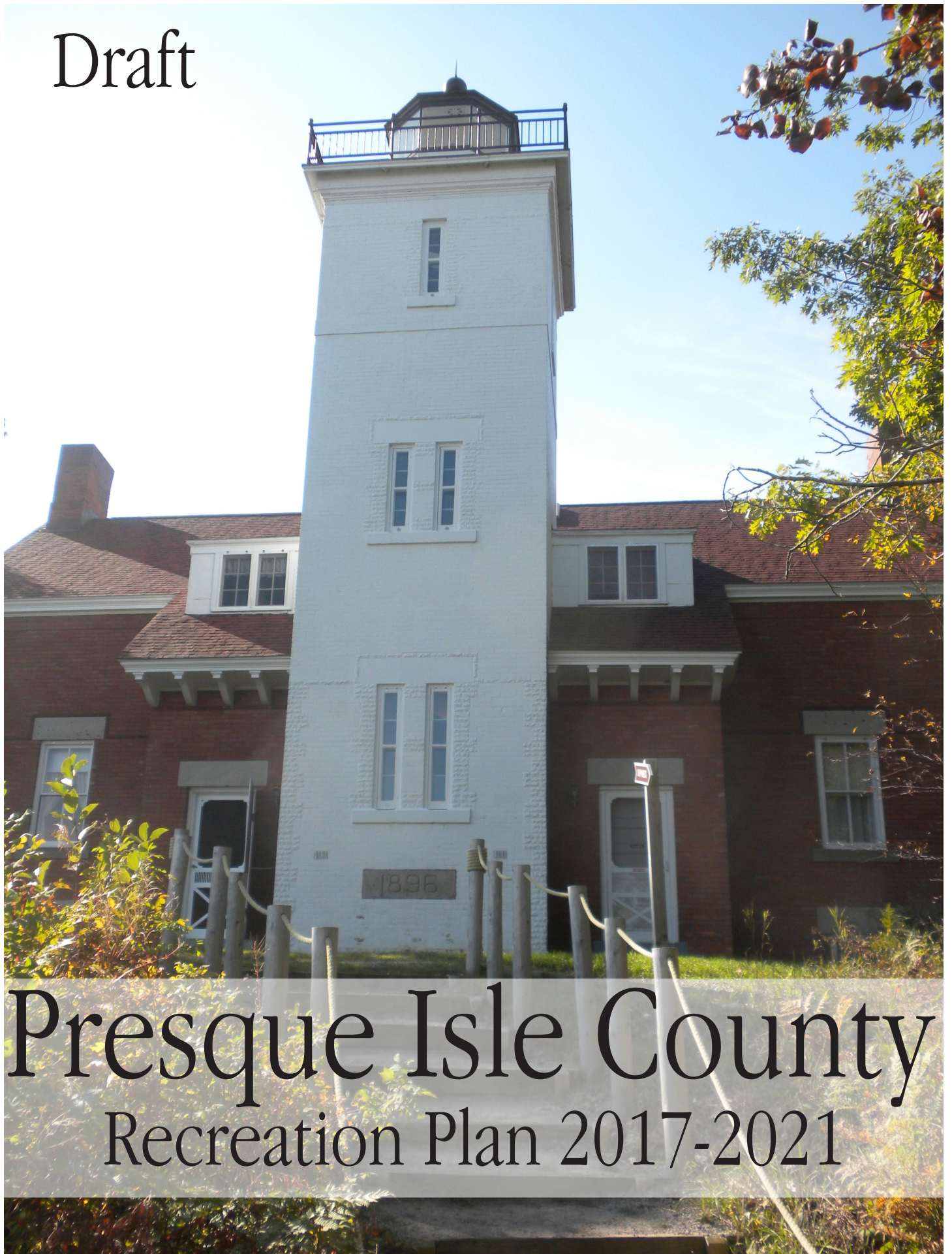


Draft



Presque Isle County

Recreation Plan 2017-2021

Recreation Plan for Presque Isle County, Michigan 2017-2021

Prepared for the Presque Isle County Planning Commission

**Adopted by the Presque Isle County Board of Commissioners:
January , 2017**

Prepared by:

Northeast Michigan Council of Governments

80 Livingston Blvd Suite 8

P. O. Box 457

Gaylord, Michigan 49735

www.discovernortheastmichigan.org

989-705-3730

Planning Staff from NEMCOG:
Denise Cline and Stephanie Loria

TABLE OF CONTENTS
(TO BE ADDED LATER)

DRAFT

CHAPTER 1

COMMUNITY DESCRIPTION

Because of the recreational character of Presque Isle County and the abundance of water and forest resources, the County wishes to formally plan for recreational facilities and activities. The County's last recreational plan was adopted in February of 2012 and expired in December of 2016. This document is an update to that plan, specifically for Presque Isle County.

FIGURE1-1 Geographic Location Map



As tourism is very important to the economic well-being of Presque Isle County, the County has provided recreational facilities and services to permanent and seasonal residents and visitors. Therefore, Presque Isle County intends to continue to expand and improve these facilities and services.

A major factor in the provision of any service is the question of how projects will be funded. One possible source of funding for recreation projects is through grants available from Michigan Department of Natural Resources (MDNR). To become grant eligible for MDNR funding, a community must have an approved five-year recreation plan. Components of a MDNR approved recreation plan include:

- ❖ Community Description
- ❖ Administrative Structure
- ❖ Recreation Inventory, including accessibility assessment and grant status report
- ❖ Description of the Planning and Public Input Processes
- ❖ Goals and Objectives
- ❖ Basis for the Action Program
- ❖ Plan Adoption Documentation

COMMUNITY LOCATION AND TRANSPORTATION LINKS

Presque Isle County is located in the northeastern portion of Michigan's Lower Peninsula. A location map is provided as **Figure 1-1**. The County has a land area of about 678 square miles (approximately 433,928 acres), which includes 72 miles of shoreline. Roughly triangular in shape, the County's northeast edge borders Lake Huron. Most of the County is rural in nature and is characterized by low population density. The 2010 Census registered a County population of 13,376. The City of Rogers City is the County seat and the largest incorporated community with a population of 2,827. The City of Onaway has a population of 880, while the Villages of Millersburg and Posen have populations of 206 and 234, respectively. The 14 townships within Presque Isle County vary in population from Moltke (296 persons) to Presque Isle (1,656 persons). Census figures reflect year-round population, but the County has many seasonal residents as well. One-third of the County's housing units are for seasonal or recreational use, so summertime population is much larger than in winter.

The County's geographic location is relatively remote from the large urban areas of Michigan. From the County seat, it is a five-hour drive to Detroit, four hours to Lansing, and two and a half hours to the Bay City/Saginaw area. On the other hand, the recreation and resort areas of northern Michigan are in close proximity. Portions of Presque Isle County are well within an hour's drive of Mackinaw City and the Straits, Petoskey, Harbor Springs, Gaylord, Indian River, and Cheboygan.

Many County residents travel to work in the nearby regional employment centers of Alpena, Cheboygan, and Gaylord. Major transportation routes in the County are U.S. 23, serving the Lake Huron coast, M-65 and M-33 serving north/south traffic, and M-68 serving east/west traffic. Interstate-75 provides freeway access to the County. It is located 22 miles west of Onaway and 42 miles west of Rogers City.

A BRIEF HISTORY OF TOURISM AND RECREATION IN PRESQUE ISLE COUNTY

Tourism and recreation have been part of the fabric of Presque Isle County since the late 1800's. The Grand Lake area, located southeast of Rogers City along Lake Huron, was probably the first part of the County to actively solicit tourism businesses during the late 1800's, with several resort hotels being

constructed along Grand Lake. Before the advent of good roads, tourist access was via steamboat from Lake Huron. The Fireside Inn and the Presque Isle Lodge, both dating from the early 20th Century, are examples of Grand Lake's early leadership in lake resort development.

The Black Lake area, near Onaway, also developed during the early 20th Century. Black Lake is part of Michigan's inland waterway system; a place of summer escape from the hot and crowded urban centers of southern Michigan. Huron Beach, along the northern Lake Huron shoreline, is an early example of recreational subdivision plat development. Further, the County's woods and waters have hosted private hunting camps and hideaways dating from the early part of the 1900's.

Lighthouses were also essential to Great Lakes navigation and to early land settlement. Three lighthouses were built in Presque Isle County, and all remain intact as popular tourism attractions. The Presque Isle Lighthouse was built in 1840 and replaced in 1870; 40 Mile Point Lighthouse, north of Rogers City, was built in 1897. Monuments and museums exist in the County to preserve the community's maritime heritage and honor those who lost their lives in the many shipwreck disasters along the coast of Lake Huron.

Public forestlands are also a significant tourist and recreational attraction and are located throughout Presque Isle County. These public holdings are largely the result of tax-reverted private lands coming back to State ownership after the physical ravages of fire or the economic ravages of the Depression. The Depression era presented Presque Isle County with some unexpected treasures: two excellent examples of early state park development. During the Depression, the Civilian Conservation Corps (CCC) established the Black Lake CCC Camp (actually located at Ocqueoc Lake). From this base of operations, the CCC built significant recreation facilities at the then-new Onaway and Hoeft State Parks. Most of these Depression-era trail systems and park buildings are still in existence and have been determined eligible for inclusion on the National Register of Historic Places. The Black Lake CCC Camp itself still remains, now re-named as the Ocqueoc Outdoor Center. Presque Isle County assumed ownership of the facility from the State in early 2004.

NATURAL RESOURCES

It is the abundance and quality of natural resources that draw people to live and recreate in Presque Isle County. That same abundance of woodlands, wetlands, water, and wildlife drew pioneers here over 100 years ago and Native Americans here thousands of years ago. Today, public lands form a foundation of green space within the County. The public lands are connected by the green infrastructure of forests, wetlands, and open space on private lands.

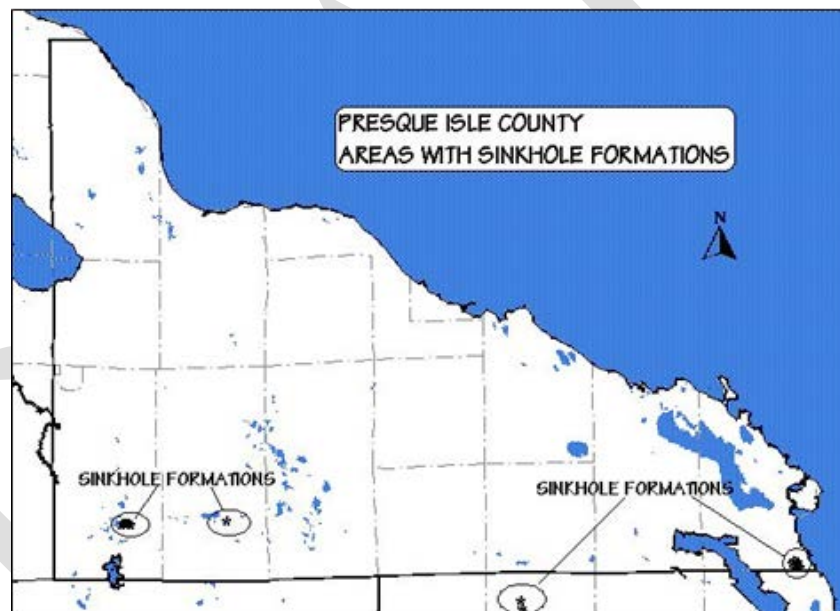
TOPOGRAPHY AND SOILS

While the County consists of plains, rolling plains, and hilly lands, the variations in elevation are not extreme. The average elevation of Lake Huron is 580 feet above sea level, and the highest points in the County are 950 feet above sea level, located in Moltke, south Allis, and south Case Townships. The greatest local variations in elevations occur between the lake plain west of Rogers City and the Moltke highlands, in areas with numerous sinkholes, and within the lakes region associated with the upper Ocqueoc River.

The soil survey of Presque Isle County identifies soils where the karst bedrock is near the surface. One important feature of the regional bedrock is the occurrence of sinkholes and underground streams. As groundwater flows through cracks and fissures in the bedrock, the limestone gradually dissolves and the openings are widened. Over a long period of time underground caverns form and the ceilings become thinner. The ceiling collapses when it becomes too thin to support the weight above, thus forming a sinkhole. "Karst" is the scientific term used to describe a type of topography that is formed in dissolved limestone, dolomite, or gypsum and is characterized by sinkholes, caves, and underground drainage systems. Karst is also a term used to describe a very distinct terrain as well as the process by which it formed.

Karst features are present in several northern Michigan counties, but are most prevalent and have the greatest number of exposed features in Presque Isle and Alpena Counties. As **Figure 1-2** shows, groupings of sinkholes are found on the Rockport property in Presque Isle Township and in the Shoepac Lake area in Allis Township. In addition to providing an interesting geographic feature, sinkholes also can host unusual plant communities. The relatively moist terrain with bedrock at or near the surface and the partially subterranean shaded location provide an environment, which sustains vegetation not found in the surrounding surface areas.

FIGURE 1-2: Locations of Sinkholes



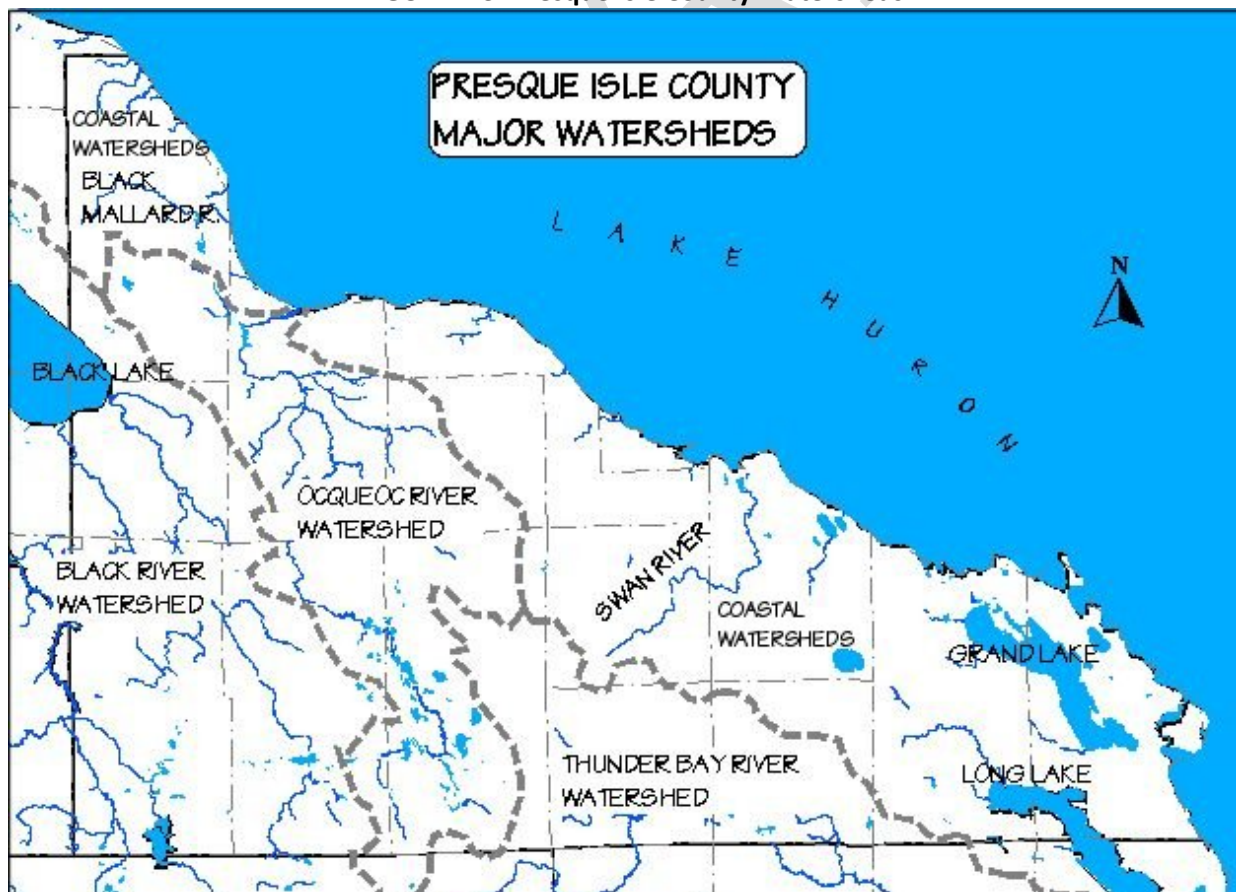
Areas with these shallow soils have severe constraints to development. Of particular concern is that bedrock aquifers are highly vulnerable to surface contamination from septic systems. Effluent from drain fields is treated as it percolates down through the soil. If there is a lack of filtration from the drain field to the bedrock, the effluent is not treated properly by the soil, and it will contaminate the bedrock aquifers with pathogens. In addition, sinkholes have been used as dump areas. The accumulation of refuse is especially dangerous, because of the direct connection to the groundwater, which usually exists in a sinkhole. Local action to protect and preserve sinkholes is recommended both on account of their scenic value and as a groundwater quality protection measure.

SURFACE WATER

Numerous lakes, streams, and swamps are found throughout Presque Isle County. In addition to these larger bodies of water, there are a great number of small ponds, kettle holes, and marshes. These smaller bodies of water are characterized by moderate seasonal water level fluctuations and various stages of vegetation encroachment. Many of the lakes and smaller bodies of water are interconnected by streams. According to the USDA Soil Survey, Presque Isle County has 89 inland lakes, 13 of which are 100 acres or larger. Black Lake, Grand Lake, and Long Lake are all over 2,000 acres in size. Other larger lakes include Lake Augusta, Lake Esau, Big Trout Lake, Lake Nettie, and Tomahawk Creek Flooding, each with surface areas of 250 acres or more. The soil survey shows 16,376 acres of surface water in the County. A descriptive list of Presque Isle County lakes and streams is included as **Appendix A**.

There are three major watersheds in the County, which are all part of the Lake Huron drainage basin. The Black River/Black Lake watershed in the western portion includes the Upper Black River, Canada Creek, Tomahawk Creek, Stony Creek, and Rainy River. This surface water eventually empties into Lake Huron at the City of Cheboygan. The Ocqueoc River watershed drains the west central parts of the County, and includes Lake Emma, Lake Nettie, Barnhart Lakes, and Ocqueoc Lake. The Thunder Bay River Watershed extends into the south central part of the County. The North Branch of the Thunder Bay eventually empties into Lake Huron at the City of Alpena. There are numerous smaller coastal watersheds such as the Black Mallard River, Trout River, Swan River, Little Trout River, Grand Lake, and Long Lake Watersheds. (See **Figure 1-3**).

FIGURE 1-3: Presque Isle County Watersheds



FISH AND WILDLIFE RESOURCES

With over 300 miles of fishing streams and creeks, 89 inland lakes, and Lake Huron, the County has an abundance and variety of fish habitat. Brook, rainbow, and brown trout are established singly or in combination in streams. Lakes offer warm water fisheries such as walleye, northern pike, largemouth bass, smallmouth bass, and pan fish. Lake Huron is an excellent salmon and lake trout fishery. The annual Salmon Tournament in Rogers City is a testament to the high quality fishery.

Deer, rabbit, grouse, and woodcock are abundant in the County. Bear, coyote, bobcat, elk, and turkey have small to moderate populations that are growing. Wildlife is a resource that brings in hunters and tourists. October and November bring thousands of hunters to the County for small game hunting, bear, and bow season for deer, peaking sharply in mid-November with the opening day of deer rifle season.

WETLANDS AND WOODLANDS

There are several sources that depict the presence of wetlands in Presque Isle County. These include the MIRIS Land Cover Inventory, National Wetlands Inventory, and Presque Isle County Soil Survey. Each source was developed independently, with different criteria and therefore depicts the location and types of wetlands somewhat differently. The MIRIS Land Cover Inventory found forested wetlands to be the dominant wetland type in Presque Isle County. Wetland forest species include lowland conifers such as northern white cedar, black spruce, and eastern tamarack, and lowland hardwoods such as black ash, elm, balsam poplar, aspen, and red maple.

National Wetlands Inventory (NWI) maps were compiled by the U.S. Fish and Wildlife Service using color infrared aerial photography and ancillary data. This inventory classified more areas as wetlands than did the MIRIS land cover inventory, but still found forested wetlands to be the most prevalent wetland type.

A COMPARISON OF SURVEYS

Michigan Resource Information System (MIRIS)

Forested Wetlands	87,071 acres
Shrub-Scrub Wetlands	10,335 acres
Emergent-Aquatic Wetlands	1,828 acres

National Wetlands Inventory Maps (NWI)

Forested Wetlands	124,462 acres
Shrub-Scrub Wetlands	14,790 acres
Emergent-Aquatic Wetlands	9,879 acres

Presque Isle County Soil Survey

Hydric Soils	137,535 acres
Soils with Hydric Inclusions	82,152 acres

In addition to the scenic characteristics of woodlands, forested areas provide habitat for wildlife, protect the soil from erosion, and act as a buffer from noise on heavily traveled highways. State forestland encompasses approximately 24 percent of the total land area in the County. The most dominant forest type is aspen/birch. The next most prevalent forest types are lowland conifers (cedar, tamarack, and

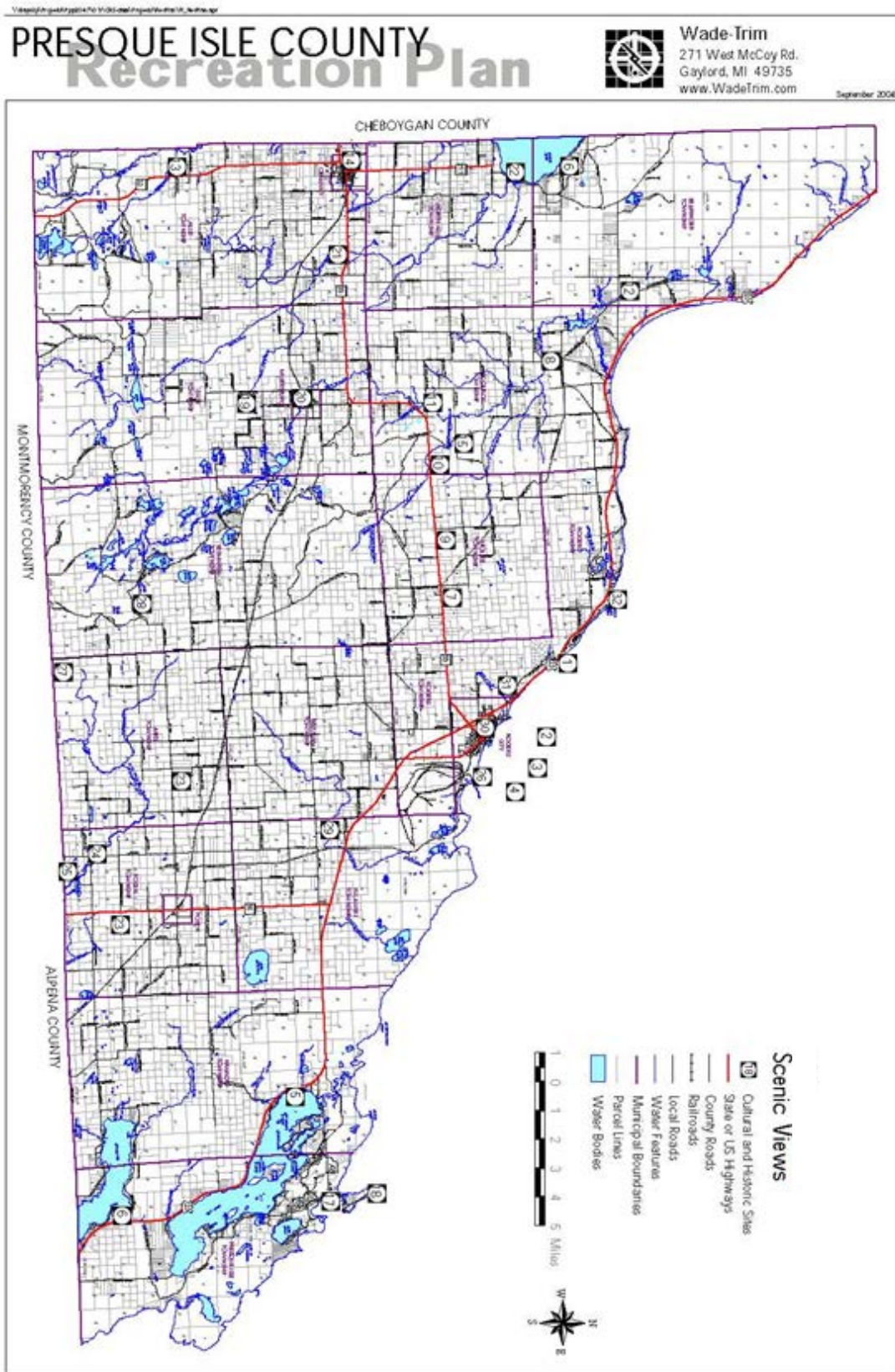
spruce) and lowland hardwoods (black ash, slippery elm, balsam poplar, aspen, and red maple). Other forest types include pine (red, jack, and white), oak (red and white), and northern hardwoods (sugar maple, American beech, and basswood).

SCENIC VIEWS

Some of the most scenic views in northern Michigan can be seen from the roadways of Presque Isle County. Vistas such as Lake Huron, forest covered glacial moraines, river valleys, marshes, hardwood and conifer forests, and farmlands are pleasing sights to travelers in the County. An informal viewshed analysis was comprised based solely on local knowledge, and is not intended to be all-inclusive, nor is it in any particular order of importance. Rather, it is provided to demonstrate the importance of such features and to recommend that they be protected and preserved. Refer to **Figure 1-4**.

1. U.S. 23 at Birchwood, between Rogers City and Hoeft State Park: views of Lake Huron, views of Rogers City and Michigan Limestone Operations especially at night.
2. Lake freighters along U.S. 23.
3. Sunrise views over Lake Huron.
4. Lake Huron views anywhere along U.S. 23.
5. Views of Grand Lake from U.S. 23.
6. Sunset views over Long Lake from U.S. 23.
7. View of Lake Huron from M-68 at "Radio Hill".
8. North Ocqueoc Road at Ocqueoc River: beautiful valley, stone farmhouse.
9. M-68 at Curtis Road: hills, hardwood forests, and farms, especially in the fall.
10. Little Ocqueoc River at M-68 roadside park.
11. Ocqueoc River on Ocqueoc Highway.
12. View of large wetland on Town Hall Highway and Ocqueoc Lake Road: Mud Lake and C.R. 646.
13. M-33 at Tomahawk Creek: log cabin and valley.
14. M-68 in Onaway: Onaway Courthouse.
15. Underground river at Silver Creek Road.
16. Black Lake views from Bluffs Highway.
17. North Bay and Presque Isle Harbor from Grand Lake Road.
18. New Presque Isle Lighthouse from Grand Lake Road.
19. "Long Swamp" from Rainy Lake Road.
20. Ocqueoc River in Millersburg.
21. Rainy River wetlands at M-68.
22. Black Lake views from County Road 489.
23. Farmland views on County Road 634 west of Posen and M-65 south of Posen.
24. Elowsky Mill off Leer Road.
25. Mystery Valley of Leer Road.
26. View of Carmeuse quarry and Lake Huron from Business U.S. 23.
27. County Road 451 at county line: deer grazing in open fields.
28. Forest views on West County Road 634.
29. Valley view of Swan River at Swan River Road.
30. Abandoned Lake Huron shoreline in Rogers City residential areas.
31. Herman Vogler Conservation Area
32. 40 Mile Point Lighthouse.
33. Numerous elk viewing areas. (not shown on map)

FIGURE 1-4: Scenic Views



CHAPTER 2

ADMINISTRATIVE STRUCTURE

PRESQUE ISLE COUNTY ADMINISTRATION

The administration of recreational facilities and activities located in Presque Isle County is divided along jurisdictional lines. The Presque Isle County Board of Commissioners is the administrative body responsible for all county owned, managed, and operated recreational facilities. As such, the final decision-making and fiscal responsibility for 40 Mile Point Lighthouse Park and Ocqueoc Outdoor Center is the County Board of Commissioners. This five-member Board consists of elected positions representing five political districts across the county. Elections are held in two-year increments and the latest election was held in November, 2016. Current Board members and elected County officials are listed below (as of January 2017):

Presque Isle County Board of Commissioners

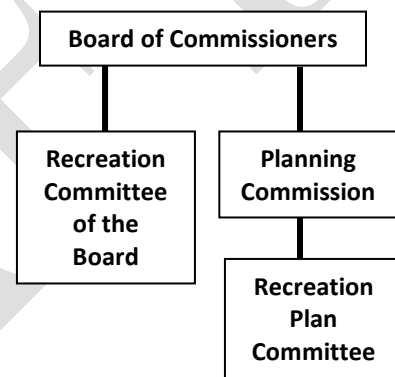
Carl L. Altman, Chair
Robert D. Schell, Vice-Chair
Lee Gapczynski
Michael A. Darga
Stephen Lang
Ann Marie Main, County Clerk and Secretary

Elected County Officials

Ann Marie Main, County Clerk
Bridget LaLonde, County Treasurer
Mary Ann Heidemann, Drain Commissioner
Hon. Donald J. McLennan, Probate Judge/Presiding Judge, Family Division
Kenneth A. Radzibon, Prosecuting Attorney
Kathleen S. Karsten, Register of Deeds
Robert W. Paschke, Sheriff
Norman J. Quaine Jr., Surveyor

Presque Isle County Planning Commission

Michael Libby, Chair
Richard Wright, Vice Chair
Fran Brink
Jerry Browning
Dennis Budnick, School Board Member
Lester Buza
Jerry C. Counterman
Toby Kuznicki
Stephen Lang, Commissioner
Emilie Stawiarski
Gary Wozniak
James Zakshesky, Building and Zoning Official



All decisions involving parks and recreation facilities in the County are deliberated by the Courthouse and Grounds Committee (Darga and Gapczynski; Lang - Alternate). Their recommendations are presented to the full Board of Commissioners for final consideration. Jurisdictional responsibilities of the Committee include: Airport, Parks, Road Commission, Equalization & Footings, Building Authority, Courthouse, Jail and Grounds. The County Planning Commission is responsible for creating and updating the Presque Isle County Recreation Plan.

A Recreation Planning Subcommittee of the Planning Commission, consisting of Fran Brink, Jim Zakshesky, and Michael Libby is responsible for coordinating the updates to the County's Recreation Plan and reports to the Planning Commission.

In its park administrative process, the Committee relies on input from the 40 Mile Point Lighthouse Society regarding the management and upkeep of 40 Mile Point Lighthouse Park and from Michigan State University Extension for administration of the Ocqueoc Outdoor Center. Administration of these sites will be discussed in more detail later in this chapter.

CURRENT YEAR & PROJECTED ANNUAL BUDGETS FOR PARKS & RECREATION

For fiscal year 2016/2017, the total County budget is \$5,225,970. The County budgeted \$_____ for fiscal year 2016/2017 for general parks and recreation administration and maintenance (40 Mile Point Lighthouse is included in this category); \$_____ was budgeted for the Ocqueoc Outdoor Center. Additional allocations are made on an as needed basis for the specific projects or sites.

For fiscal year 2017/2018, an approximate 2% budget increase is anticipated. Therefore, it is anticipated that the County will budget \$5,311,656 for fiscal year 2017/2018 for the total County budget. Allocations for general parks and recreation administration and maintenance, which includes 40 Mile Point Lighthouse, is \$____; and \$_____ is budgeted for the Ocqueoc Outdoor Center. Additional allocations will remain being made on an as needed basis for specific projects or sites.

The responsibility for administration of the County budget is through the offices of the County Clerk and the County Treasurer, both elected positions. The administration of grant programs is also the responsibility of those offices, although other departments or organizations may assist, as needed. The County is responsible for any grant-required matching funds. Matching funds may include volunteer labor and donated funds and materials.

PARTNERSHIPS WITH SCHOOL DISTRICTS

Presque Isle County is not officially associated with the four local school districts (Onaway Area School District, Rogers City Area Schools, Posen Consolidated School District and Alpena Public Schools) or their recreational facilities. However, MSU Extension's Presque Isle County Office coordinates some educational programming with local schools, and the Ocqueoc Outdoor Center is often used for school group outings or 4H youth camps.

RELATIONSHIPS WITH PUBLIC/PRIVATE AGENCIES AND VOLUNTEERS

40 Mile Point Lighthouse Park and Society

Day-to-day operations of 40 Mile Point Lighthouse Park and its facilities fall to the 40 Mile Point Lighthouse Society; a not-for-profit organization established in the mid-1990's after Presque Isle County assumed ownership of the site. The Society is funded by the sale of memberships, donations, and gift shop revenues. There is no admission charge at the park or entry fee into any of the park buildings, but donations are always accepted.

Over the years, the Society has been largely responsible for overseeing the improvements made to the Keeper's House, the tower and many other park amenities. It fully expects to continue to actively manage, restore, and improve all of the facilities at this park. The Society has been able to leverage a remarkable amount of volunteer labor and donated materials from its members. In 2000, Presque Isle County received an \$112,542 Clean Michigan Initiative Lighthouse Grant (administered by Michigan Department of Environmental Quality) to preserve all of the buildings in a historically correct manner. The County paid the local match of \$37,514 and the Society provided all of the volunteer labor. Activities included minor repairs, painting and basic improvements to the museum; correction of drainage problems; replacement of picnic tables and the installation of playground equipment.

The Society supported the expansion of the Huron Sunrise Trail from Hoeft State Park to 40 Mile Point Lighthouse, making the park accessible by non-motorized trail all the way to Rogers City. The trail extension has been a great asset for the site.

Additionally, the Society offers a "guest lighthouse keeper" program, which permits people to live in their RV (in the designated campground) for a minimum of two weeks. In exchange, the "keepers" pay a small fee and are responsible to greet visitors, give tours, work in the gift shop and perform minor routine housekeeping duties as needed.

Glawe School

In addition to county funding to acquire and relocate the one-room school building in 1999, the Glawe (pronounced "GLOVE-ee") School Committee, a non-profit organization, has been instrumental in providing volunteer support for administration, staffing and improvements. The building interior and exterior was repainted, and electricity was installed. The original school bell and doors were recovered and installed. Several desks and other appropriate furnishing have been installed. There is no heat or water in the building, so it is only open from July 4th through Labor Day. Because of limited staffing, there are no regular visiting hours. When the flag is flying, the school is open. The Committee does not charge admission for entrance, but gladly accepts monetary donations. Additional financial support for improvements came from the "Communities First Fund", a charitable trust of Presque Isle Electric and Gas Co-operative. The County does not make routine allocations for the Glawe School, but responds to Committee requests for specific needs. The Committee is in the process of collecting artifacts and photographs associated with this school and other one-room schools.

Ocqueoc Outdoor Center and Michigan State University Extension

Michigan State University Extension handles reservations for rental at the Ocqueoc Outdoor Center and answers various questions for persons seeking information.

The Board of Commissioners has supported funding for the facility since acquiring the Ocqueoc Outdoor Center and the Board has allocated \$_____ for fiscal year 2017 for maintenance and improvements.

A volunteer group called “Friends of the Ocqueoc Outdoor Center” has formed to discuss goals, formulate promotional plans, and prioritize upgrades. Currently the County and the Friends group are seeking MDNR funding for rehabilitation of the property and recognition by the National Register of Historic Places.

Village of Millersburg NEST Trailhead

Presque Isle County was responsible for overseeing development of the Millersburg Trailhead on the North Eastern State Trail (NEST) in 2012; the County was then reimbursed for the cost of development from a Michigan Natural Resources Trust Fund Grant that was awarded to them for the project. The County also currently leases the land on which the trailhead is located from the Village of Millersburg (Village). In return, the Village is responsible for the operation and maintenance of the trailhead facilities, at an approximate cost of \$4,000 annually.

Presque Isle County Development Commission

The Director of the Presque Isle County Development Commission oversees grant projects for recreational facilities, and also serves as a liaison between Presque Isle County and State agencies.

Presque Isle Conservation District

Presque Isle County provides an appropriation to the Presque Isle Conservation District (totaling \$_____ in FY 2017). The Presque Isle Conservation District owns the Herman Vogler Conservation Area; therefore Presque Isle County provides financial support for this facility through the Conservation District. A 2% increase in the allocation (totaling _____) to the Conservation District is anticipated for FY 2017/2018 (?).

CHAPTER 3

RECREATION INVENTORY

Existing recreation facilities owned and/or operated by Presque Isle County are described in detail in this chapter, followed by descriptions and lists of other recreational facilities in the County, based on ownership. **Figure 3-3** at the end of the chapter illustrates the location of the most heavily used properties.

The methods used by NEMCOG staff to compile this recreational inventory include site visits (as required), information provided by State and local government agencies, “Friends” volunteer groups, local Chambers of Commerce, and other online information sources. Compiled information from the previous recreation plan was compared to existing information to ensure consistency and/or accuracy.

PRESQUE ISLE COUNTY RECREATION FACILITIES

Presque Isle County either owns or maintains the following properties, which are currently being used for recreational purposes.

40 Mile Point Lighthouse Park/Glawe School 7323 US-23 South, Rogers City

Type: Special Use Facility

Service Area: Northeast Michigan

Barrier-Free Accessibility: 2 - some of the facilities meet accessibility guidelines

More than 20 acres and all historic buildings, except the lighthouse and 2.4 acres surrounding it, were conveyed to Presque Isle County in 1972 by the Bureau of Outdoor Recreation under the “Legacy of Parks” program. When the lighthouse was declared surplus and assigned to the Administrator of General Services for disposal, application was made to have the property conveyed to the County. The U.S. Government conveyed ownership of the lighthouse and remaining 2.4 acres to the County in November, 1998. The County has committed to upkeep and preservation of the light station and park for over 25 years and will continue to do so. At this time, the Coast Guard is only responsible for maintaining the automated light. The lighthouse has been on the National Register since 1984 and is a Sweetwater Trail site. An historic marker exists on the site.

The lighthouse museum is operated by the non-profit 40 Mile Point Lighthouse Society and is open to the public from Memorial Day weekend to mid-October. Hours of operation for the museum/gift shop/out buildings and Calcite Pilot House are Tuesday – Saturday 10 am to 4 pm and Sunday from Noon to 4:00 pm. However, the park is open to the public year-round, dawn to dusk, with restroom facilities available in summer only. More discussion on the park administration is found in Chapter 2, Administration. Funds are generated from 40 Mile Point Lighthouse Society membership dues, gift shop sales, donations, and are also allocated in the Presque Isle County annual budget.

Features of the site include:

- Light tower with working Fourth Order Fresnel lens set on an 1872 collar—Visitors may climb the tower during hours of operation and is not barrier-free.
- Light keeper’s house, two-story mirror image duplex—it originally provided dwellings for the keeper’s family and the assistant keeper’s family. One side of the light keeper’s house is now occupied year-round by a caretaker. The other side houses a maritime museum. Much of the museum side of the building has been restored to as near original condition as possible, with original furnishings and housewares. A display case at the base of the lighthouse tower showcases archeological findings of historic residential belongings/rubbish, unearthed from a “dig” conducted on site by Central Michigan University students. Because of the original architecture, the building is accessible only by steps.
- Bunkhouse/barn—Post and beam constructed building was the original bunkhouse for workers when the tower and keeper’s house were being built. At one point it was used as a barn. It is now used as a gift shop. The building is on ground level and is not barrier-free – a step is required to enter the structure.
- A modern storage barn and chicken coop are located north of the Keeper’s house/lighthouse tower.
- Fog Signal Building - is now an enclosed pavilion with picnic tables, benches, and electricity. With the exception of a non-accessible door entry handle, the building has been made barrier-free with an entrance ramp. Adjacent to the building is a playground with swings, grills, and horseshoe pit.
- Restrooms/changing rooms—not completely barrier-free/ accessible.

- Enclosed pavilion with removable windows (has a stage and electric outlets) and two vault toilets—Barrier-free accessible and open to the public.
- Two brick privies—Original site buildings; open to the public.
- Brick oil house—Original site building; not open to the public.
- Pilot house from the *Calcite* (built in 1912 and de-commissioned in 1961)—It is completely furnished and equipped to the period and is open when the museum is open.
- Lifeboat from the *Calcite*.
- Kiosk information center.
- 1905 shipwreck remains of the steamer *Joseph S. Fay* on beach - steps to beach not barrier-free.
- Walking trails and wooded natural area.
- Abandoned shoreline dunes from glacial Lake Huron.
- Swimming beach.
- International Shipmasters Association Memorial.
- Paved entrance with one-way loop.
- Guest keeper campsites (no dumping station).
- Huron Sunrise Trail – 11.1 mile long paved trail that links 40 Mile Point with Rogers City.

A site map of the park is shown as **Figure 3-1**.



Views From the Lighthouse Tower



Dining Room



Lighthouse Tower



Joseph S. Fay shipwreck



Enclosed Pavilion



Keeper's House

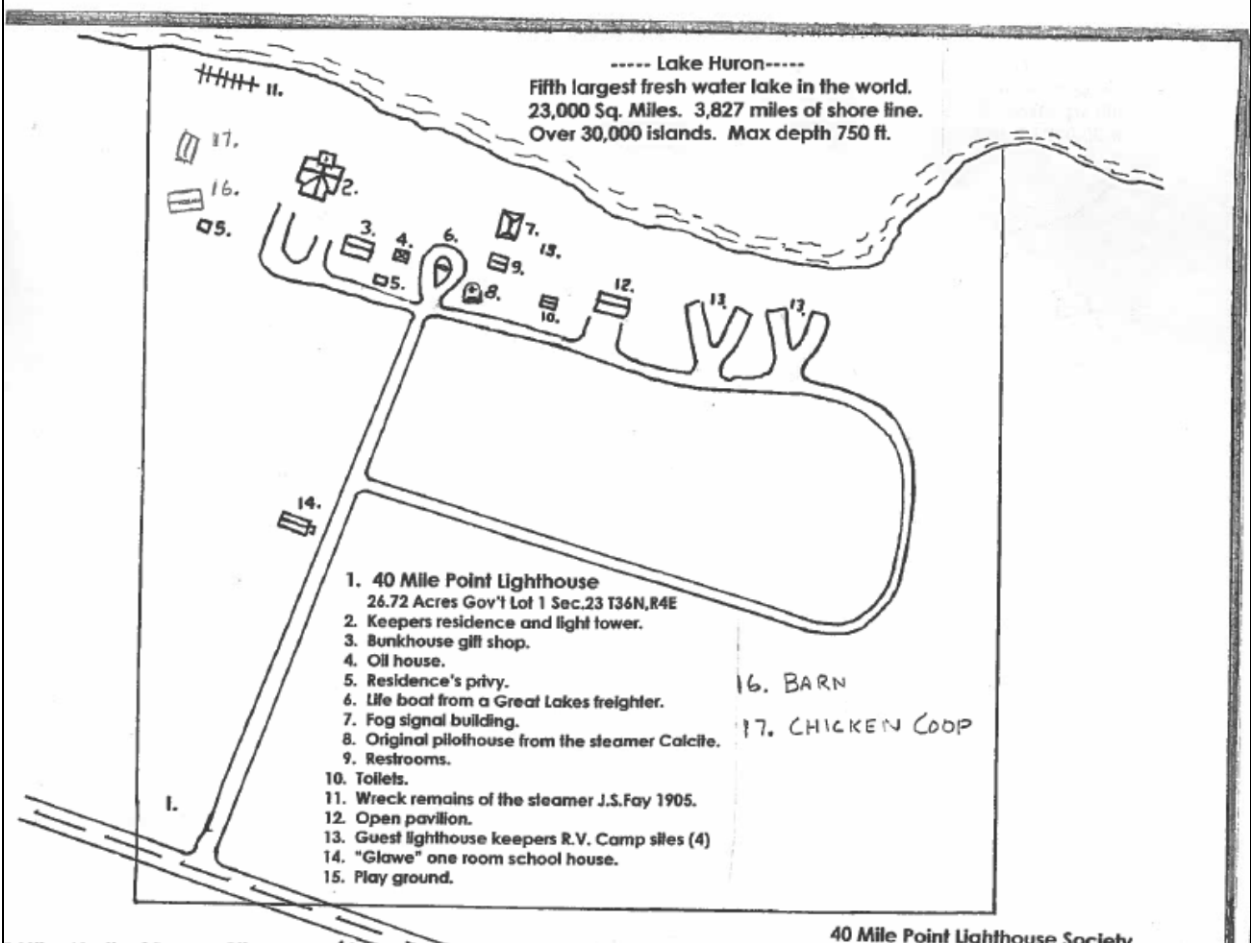
The Glawe School

The one-room school (pronounced *GLOVE-ee*) was moved to the 40 Mile Point Lighthouse Park site in 1999. Presque Isle County accepted the building from Trinity Lutheran Church when the church was undergoing an expansion project. Originally log-construction with wood clapboard siding, the school was built in 1885 in Ocqueoc Township and was in service until 1960. Grades 1-8 were taught in the one-room school. Photographs and artifacts pertaining to one-room schools are being collected and will be on display. Since there is no heat in the building, visitors may enter the school from July 4th to Labor Day; the building is staffed and open when the flag is out. The Glawe School Committee, a non-profit organization, is working with the County to restore and preserve the school.



Glawe School

FIGURE 3-1: 40 Mile Point Lighthouse Park Map



Ocqueoc Outdoor Center 7142 Ocqueoc Lake Road, Millersburg, MI 49759

Type: Special Use Facility

Service Area: Northeast Michigan

Barrier-Free Accessibility: 2 - some of the facilities meet accessibility guidelines

Presque Isle County acquired this 18-acre site in April, 2004 from Michigan Department of Natural Resources when the agency was considering demolition of the buildings. The site, located on Ocqueoc Lake, was deeded to the County with a reverter clause stating that the facility would be used for recreational purposes or be returned to the State. The facility was first built and used as a Civilian Conservation Corps (CCC) camp during President Franklin Roosevelt’s time in office. During that time it was called “The Black Lake Camp”. The site is currently rented as a group camping and meeting facility. Eight of the original CCC camp buildings remain and two newer buildings have been added to the site. The “Friends of the Ocqueoc Outdoor Center” has met to set goals for the property including how to promote usage and priority of upgrades. In September 2016, the Friends Group submitted an application for determination of eligibility to be recognized by the National Register of Historic Places. A copy of that application and supplemental materials are included in **Appendix B**.

Features of the Ocqueoc Outdoor Center include:

- Former caretaker residence— This building is planned to be remodeled into a lodging unit with a bathroom and small kitchen. It could be rented out or used by unpaid caretaker staff in the future.
- Two bunkhouses—Equipped with bunk beds and mattresses, the buildings can sleep 77 campers. The interior has received new paint, and new doors were installed. The bunkhouses have been renamed the Black Mountain Building and Lakes and Streams Building. They are on ground level and are barrier-free. Air conditioners are available in each bunk house.
- Bathroom facilities—Shower and restroom facilities are located in a separate building near the bunkhouses. The shower building was renovated with new paint, barrier-free sinks/vanity tops and low-flow toilets; in 2010, new showers were installed.
- Dining room/kitchen—To make the dining room ready for use, the interior was thoroughly cleaned and painted and furnished with new chairs and tables in 2004. It is accessible. The building needs exterior paint and new windows. Groups using the camp furnish food and cook. The kitchen/mess hall can seat 84 and has two commercial ranges, two refrigerators, commercial sinks, preparation space, a walk-in cooler, and a dry storage area.
- Classroom building—The interior of this building was renovated and is ready for year-round use, with 12 tables (6 for each side) and chairs. The building was renamed the Simon Yarrett Classroom, in honor of the gentleman who resided at and cared for the camp for more than 40 years.
- Media center—This building is the former chaperone's quarters. The first-aid station is located in this building. Much renovation, both exterior and interior, need to occur before the media center is ready for use.
- Outdoor platform/chapel overlooking the lake—Suitable for weddings (reception in the dining room) and meditation.
- Lakeside seating (needs to be restored).
- Small beach and two docks.
- Picnic tables—Donated by Harrisville State Park.
- Log Cabin with classroom – built by Onaway Log Cabin class.
- Basketball area
- Archery/shooting range
- Signs have been placed at the entrances (by the Road Commission).

Figure 3-2: Ocqueoc Outdoor Center Site Map





Bunkhouse



Barrier-free ramp



Window



Kitchen



Kitchen



Dining Hall



Dock



Log Cabin with Classroom



Classroom in Log Cabin

Presque Isle County Building and 4-H Community Garden

Type: Special Use Facility

Service Area: Presque Isle County

Barrier-Free Accessibility:

Presque Isle County Building: 4 – meets accessibility guidelines

Community Garden: 2 – some of the facilities meet accessibility guidelines

The Presque Isle County Building contains offices for county facilities as well as the courts. The 4-H Community Garden is located across the street from the Presque Isle County Building, adjoining the County's MSUE office on E. Huron Avenue. The purpose of the project is to engage youth (ages 5-19) to learn life skills including planning and organizing, decision-making, wise use of resources, healthy lifestyle choices, self-motivation, teamwork, community service, gardening and construction. Participants learn to harvest, prepare and eat the food they raise and learn how to use tools to build the garden beds and compost bin. The garden consists of nine raised garden beds, a storage shed, and a large plastic storage bin. Woodchips and grass surround the garden beds.



The 4-H Youth Community Garden

Millersburg Trailhead for the NEST Located East of Main Street, between Veterans Drive and Luce Street, in the Village of Millersburg

Type: Regional Park

Service Area: Presque Isle County and Northeast Michigan

Barrier-Free Accessibility: 5 – The facility meets the Principals of Universal Design

Presque Isle County was responsible for overseeing development of the Millersburg Trailhead on the North Eastern State Trail (NEST) in 2012; the County was then reimbursed for the cost of development from a Michigan Natural Resources Trust Fund Grant that was awarded to them for the project. The County also currently leases the land on which the trailhead is located from the Village of Millersburg (Village). In return, the Village is responsible for the operation and maintenance of the trailhead facilities. The trailhead is adjoins the recently renovated Millersburg Historical Building.

A large covered shelter houses the men’s and women’s restrooms, picnic tables, and faux-log, fire resistant seating around an open fire pit. Other features include paved parking for vehicles, a large grass/gravel parking area for snowmobiles, interpretive signs, bike racks, a drinking fountain, benches, and trash cans, and concrete pathways connecting the site elements. The facility is open year-round except during extreme cold weather, when the restrooms are closed to protect water pipes from damage.



Parking Area with Pavilion & Historical Museum Beyond



Pavilion with Restrooms



Looking west along the NEST



Fire Pit Inside Pavilion



Interpretive signage along the trail



Skating Rink

Fletcher-Gilcrest Park

NOTE: This park is not a county-owned facility, but is included in this inventory for informational purposes only.

Type: Community Park

Service Area: Presque Isle County

Barrier-Free Accessibility: 1 - none of the facilities meet accessibility guidelines

Fletcher Gilcrest Park, located on Grand Lake and owned by the Presque Isle County Road Commission, contains a boat ramp and parking area. In addition, a pavilion was built by the Grand Lake Sportsmen’s Club and Presque Isle Corporation in conjunction with the Presque Isle County Road Commission and was dedicated in August of 1998. The pavilion is convertible from open air to closed. While the pavilion floor is at ground level, no paved walkway exists between the parking lot and the pavilion. In addition, pit toilets are available which are not barrier-free. A small storage shed is also located on the property. In the winter, a free fishing derby is held at the park with prizes available in the pavilion.



Boat Ramp



Pavilion



Pit Toilet

RECREATION GRANT INVENTORY

Presque Isle County has received three recreation grants from the MDNR, descriptions of which are provided below. The required PCSC Reports are included as **Appendix C**.

PROJECT TITLE: Millersburg Historic Depot Regional Trailhead Development

PROJECT NUMBER: Michigan Natural Resources Trust Fund TF 10-035

PROJECT YEAR: 2010 (awarded in 2011)

GRANT AMOUNT: \$492,100

PROJECT DESCRIPTION: In April, 2011, Presque Isle County applied for and received a grant from the Michigan Natural Resources Trust Fund to develop a year-round regional facility to serve the North Eastern State Trail (NEST) in the Village of Millersburg. It is located adjacent to the Millersburg Historic Train Depot Museum, a project completed by the Millersburg Historical Society. This project was completed in 2012, with a dedication in January 2013. The project scope consisted of a restroom/pavilion structure, fire pit, paved parking, reinforced lawn area for snowmobile parking, paved walkways connecting site elements, landscaping, lighting, and historic interpretive signage along the trail. A skating rink that can be used for ice skating or roller skating is also included. The project scope originally included a fishing/overlook platform where the trail crosses the Ocqueoc River. However, that part of the project was unable to be completed as the bridge was in need of replacement; the MDNR plans to have the bridge reconstructed in time for the 2016-17 snowmobile season.

Presque Isle County owns the trailhead property. On June 24, 2011, a lease was executed agreement between Presque Isle County and the Village of Millersburg for the subject premises to maintain, operate, improve, and develop a trailway facility. This lease agreement was amended on November 29, 2011, whereby the Village of Millersburg, at their expense, shall maintain the building and grounds including mowing, snow shoveling, plowing, and janitorial services, and shall keep the premises in good repair. They shall also be responsible for locking and unlocking the bathroom facilities located on the premises. The subject lease agreement between the Village of Millersburg and Presque Isle County is for a 20 year term beginning on August 1, 2011 or upon actual possession, whichever is later, and ending on July 31, 2031. The rental payment for this lease is \$1.00. The restrooms are open year-round, except during extremely cold weather conditions, to prevent damage to the water lines. The approximate cost for the Village to conduct annual maintenance at the facility is \$4,000.

The Millersburg Trailhead Surface Use lease between the MDNR Forest Management Division and Presque Isle County was executed by the county on November 29, 2011. This lease agreement, for \$0.00 per year, authorizes the county to maintain the premises as a trailhead facility and trail segment for the North Eastern State Trail. The lease is for a 20-year term beginning upon actual possession at 12:01 am on November 29, 2011 and ending at midnight on November 28, 2031, or such later date as provided in

paragraph 7 of the lease agreement. The beginning and ending lease term dates may be altered by mutual written consent to reflect the actual date of occupancy.

Presque Isle County maintains commercial general liability insurance through Argonaut Insurance Co. with Cadillac Insurance Center, Inc. as agent. The Village of Millersburg and the State of Michigan are names as additional insured's on the certificate of liability insurance and both have been provided a copy of said certificate.

The trailhead facilities are well maintained and in excellent condition. The MNRTF grant recognition plaque is displayed inside the pavilion.

PROJECT TITLE: Forty-Mile Point Lighthouse

PROJECT NUMBER: Bond Fund BF 89-202

PROJECT YEAR: 1989

GRANT AMOUNT: \$54,563

PROJECT DESCRIPTION: Development of the [at that time] County's only park facility, with modern rooms, and museum renovation. Scope items included: bathhouse roof, drain field, erosion control, furnace for museum, main structure roof, museum access ramp, parking lot, museum building renovations, pavilion, restrooms, septic tank, sidewalks, structural brick pointer, and well.

All improvements (that could reasonably be observed) appeared to be functional and in good and working condition. Minor maintenance (paint, repairing exterior foundation cracks, etc.) appeared to be needed.

PROJECT TITLE: Presque Isle County Park (40-Mile Point Lighthouse)

PROJECT NUMBER: Land and Water Conservation Fund 26-00293

PROJECT YEAR: 1970

GRANT AMOUNT: \$5,000

PROJECT DESCRIPTION: Development of 24 acres of land to include a picnic area, water system, parking, toilet facilities, and renovation of two existing buildings into change houses.

All improvements (that could reasonably be observed) appeared to be functional and in good and working condition. Minor maintenance (painting, etc.) appeared to be needed. The LWCF recognition plaque is clearly displayed on the exterior of the Fog Signal Building, near the restrooms/change house structure.

STATE OF MICHIGAN RECREATION FACILITIES

The Michigan Department of Natural Resources (DNR) administers state parks, state forest campgrounds, harbors/marinas, certain public access sites, trail facilities and multi-use trails on state forest lands. Other public access sites and roadside parks along U.S. 23 are owned by the State but are maintained by the Presque Isle County Road Commission. In Presque Isle County, the very active Presque Isle Sno-Trails Club, in conjunction with the DNR, maintains and grooms 132 miles of snowmobile trails during the December 1 through April 1 winter season.

Besser Natural Area

This 134-acre tract, maintained by the MDNR, is located in the southeastern portion of Presque Isle Township along more than 4,000 feet of Lake Huron shoreline at False Presque Isle Harbor. The site is the location of the abandoned lumbering era Village of Bell, whose peak population in the 1880's was 100. The Bell Cemetery, where approximately 30 burials occurred, was restored and rededicated in 1989. A stand of virgin pine is located on the site and is maintained as a memorial to the lumbermen who spared the trees. The one-mile foot trail to a small lagoon is used for hiking, biking, snowshoeing, cross-country skiing and other non-motorized recreational activities.

Black Mountain Recreation Area

This area located in both Presque Isle and Cheboygan Counties offers a wide variety of outdoor activities in a forested setting. Known regionally for its multi-use offerings, the area features:

- Hunting

- Fishing
- 30 miles of trail that is designated as the Black Mountain Pathway. 30 miles of this trail are open for hiking, including a 1.3 mile barrier-free, paved pathway with forest scenery and trail-side shelters. 20-25 miles of the trail are groomed for cross-country skiing, and are maintained by the Black Mountain Nordic Ski Club. 30 miles of the trail system are also open to equestrian riding. Vault toilets are available.
- Snowmobile No. 99 runs through this site.
- The 74.1 mile Black Lake Trail & Route and Bummers Roost Trail run through this site, which is open for motorcycling and ORV use.

Hammond Bay State Refuge Harbor

Located in north Bearinger Township, this site was originally developed to provide a safe harbor from Lake Huron storms. This certified “Clean Marina” also provides seasonal and transient boat slips in addition to the following amenities:

- Recently updated comfort building
- Barrier-free restrooms/showers
- Electricity, water, pump-out
- Gasoline/diesel
- Boat launch
- Dog run
- Grills, picnic tables, and ice
- 15 boat slips

Ocqueoc Falls State Forest Campground/Recreation Area

This 15-site rustic campground is located in south Ocqueoc Township on the Ocqueoc River. Site features and activities include:

- Rustic camping—vault toilets and potable water from hand pump well.
- Wildlife viewing
- Fishing
- Picnic area with tables and grills
- Hiking, cross-country skiing and mountain biking are permitted on the 6-mile Ocqueoc Falls Bicentennial Pathway on site, features view of Ocqueoc Falls, the largest waterfall in the Lower Peninsula.
- An accessible walking trail runs between the falls' overlook area, parking lot and the campground, and family and friends can enjoy a picnic with accessible picnic tables and grills at the overlook. Visitors can access the water using either a recycled plastic decked ramp or a set of tiered rocks.
- The access routes to the river corridor intended to provide users a choice in how they access the shoreline that fits their ability and desire for adventure. A recycled plastic decked ramp that complies with Americans with Disabilities Act design requirements provides the easiest route of travel to the river. Other access routes utilize natural rock tiers placed to offer a variety of climbing challenges.
- One of the climbing routes provides transfer stations at the top and bottom of the bluff so an individual with mobility impairments may transfer out of their wheelchair to start their climb.

Onaway State Park

One of the State’s oldest parks, it was dedicated in 1921 and contains buildings constructed during the CCC period. Located on the southeast shore of Black Lake, the park covers 158 acres of generally rustic land. Park amenities and activities include:

- Modern full-service campground—82 sites, closed during the winter. Modern, accessible restrooms.
- Shoreline Camper Cabin – sleeps 6, available for rent from April – November.
- Swimming beach.
- Boat launch/dock.
- Fishing
- Children’s playground.
- Day-use picnic area—tables and grills.
- Rental canoes, kayaks, and rowboats available.
- Biking—allowed on park roads, but not on the nature trail.
- Hiking or cross-country skiing—three-mile nature trail.

P.H. Hoeft State Park

This heavily wooded, 300-acre park is located five miles northwest of Rogers City and includes one mile of sandy Lake Huron shoreline. Like Onaway State Park, Hoeft was one of the early state parks. The land was donated by Mr. Hoeft in 1922. Park amenities and activities include:

- Modern full-service campground—143 sites and 1 mini cabin, closed during the winter months.
- Group-use camping area.
- A modernized, 1920's Sears & Roebuck lodge that can sleep up to 8; open for rent year-round.
- Hunting—about one-half the park is open for hunting on the west side of US-23.
- Children's playground.
- Swimming beach/beach house—one for day-use and one for the campground.
- Two volleyball pits
- Two horseshoe pits
- Day-use picnic area—tables, fire pits, and grills.
- Log and stone picnic shelter/lodge—built by the CCC and eligible for the National Register, provides a view of the lake and is available on a first-come, first-served basis or by reservation.
- Biking—Huron Sunrise Trail from the park's day use area to and through Rogers City.
- Hiking/cross-country skiing—4 ½ mile trail runs through park and along the Lake Huron shoreline.
- Metal detecting
- Michigan State Park Explorer Program

Presque Isle State Harbor

After nine years of development, construction and expansion, the MDNR boating facility at Presque Isle Harbor was completed in 1998. Early development and construction phases included construction of a jetty and breakwall to protect the harbor and its users. The breakwall features a long concrete walkway with safety railing and a fishing platform near the far end. Both are handicapped accessible and provide outstanding harbor views.

The next phase consisted of the removal of existing docks, dredging of the boat harbor and entrance, installation of shore protection and installation of a permanent launch ramp, entrance lights and a sound signal. The harbormaster facility and comfort stations were constructed and fuel service for boaters provided during this phase.

Two floating piers were installed providing 80 slips for transient boaters. The facility was opened on July 1, 1992 and was formally dedicated on August 11, 1992. A third and final pier was added in 1998, providing an additional 40 slips. Amenities include:

- Clean Marina Certified
- Barrier-free restrooms/showers and laundry
- Electricity, water, pump-out
- Gasoline, diesel
- Boat launch
- Fishing pier
- Dog run
- Grills
- Swimming beach—shallow, warm water, sandy beach.

Shoepac Lake State Forest Campground

Located in south Allis Township adjacent to Shoepac Lake, the rustic campground offers 28 sites for tent or small trailer use. The natural limestone topography (karst) of the area creates an interesting line of sinkholes, which can be explored along a hiking trail. Site features and activities include:

- Rustic camping—barrier-free vault toilets and potable water from hand pump well.
- Sinkhole viewing
- Swimming beach
- Fishing
- Hiking and mountain biking at the 2 ½ mile sinkhole trail on site and the High Country Pathway that passes through the site.
- Atlanta ATV Trail—one mile south of site.
- Boat Launch

- Day-use picnic area
- Mountain biking
- Birding

Thompson's Harbor State Park

Situated on Lake Huron in northern Krakow Township, this undeveloped park features more than 5,000 acres and 7 ½ miles of Lake Huron shoreline. The site is home to the endangered Dwarf Lake Iris. There are no structures on the site, but visitors may participate in the following activities:

- Hunting
- Nature viewing
- Boat Launch
- Fishing
- Biking—on existing roads only
- Hiking/cross-country skiing on 6 miles of trail
- Two rustic cabins- the Cedar Haven (Universally Accessible) and Stone Path - will sleep up to 6 persons with two sets of bunk beds and a pull-out couch. Each has a gas stove and lanterns, outdoor hand pumps and vault toilets.

Tomahawk Creek Flooding State Forest Campground

This 47-site rustic campground is located in south Allis Township about one mile south of Shoepac Lake State Forest Campground. Site features and activities include:

- Rustic camping for tents and trailers; barrier-free vault toilets; potable water from hand pump well.
- There are two campsites, each with their own boat launch: on the northwest shore (West Unit) and on the northeast shore (East Unit)
- Fishing
- Picnic area
- Wildlife viewing
- Hiking and mountain biking at the 2 ½ mile sinkhole trail, located one mile north, and the High Country Pathway which passes through the site
- Atlanta ATV Trail—nearby

Tomahawk Lake State Forest Campground

Also located in south Allis Township, this rustic campground is situated adjacent to Tomahawk Lake and consists of 26 sites for tent and small trailer use. Site features and activities include:

- Rustic camping—barrier-free vault toilets and potable water from hand pump well.
- Fishing
- Boat launch
- Swimming beach
- Wildlife viewing
- Hiking and mountain biking on the 2 ½ mile sinkhole trail, located one mile north, and the High Country Pathway that passes through the site.
- Atlanta ATV Trail—nearby.

PRESQUE ISLE CONSERVATION DISTRICT

Herman Vogler Conservation Area

The Conservation District acquired the 270-acre property from the MDNR in 1989. This beautiful site is open year-round for a multitude of recreation activities. Approximately one-third of the land lies within the city limits of Rogers City. Seven miles of trails are used by hikers in the warm months and skiers during the winter months. Trout River crosses the property along with several other small creeks. Interpretive signs are posted along the trails and a trail map is posted at the inner parking lot. A portion of the Huron Sunrise Trail enters the park overlooking the pond. Fully accessible restrooms are situated at the parking lot. Game bird and rabbit hunting are permitted along with bow hunting for deer. A timber harvest was conducted in 2016 as part of a forest management program, and will continue through 2017. **The site needs bridge, dam, and trail improvements. (Verify)**

RECREATIONAL FACILITIES IN ROGERS CITY, ONAWAY, METZ TOWNSHIP, VILLAGE OF MILLERSBURG, VILLAGE OF POSEN, POSEN TOWNSHIP AND PRESQUE ISLE TOWNSHIP

The communities noted above have prepared community recreation plans, and each plan lists several sites giving details about the facilities. For simplicity, the sites are listed with minimal details in this document. Specific amenities can be referenced in the appropriate plan.

Rogers City

- **Seagull Point Day Park**—43-acre park is set along Lake Huron in a natural dune formation; 1 ½ mile bark path; swimming beach; picnic area.
- **Trout River Park**—22-acre wooded picnic and recreational area adjacent to the Trout River with picnic tables, benches, fire pit, barbeque grills, volleyball court, and vault toilet.
- **North Shore Park**—three-acre park along Lake Huron; occupies an abandoned road bed.
- **Lakeside Park**—the city's best equipped and most heavily used park is ten acres and is adjacent to the marina; swimming beach and raft; enclosed picnic pavilion; two playgrounds; food concession; extensive picnic areas; two beach volleyball courts; basketball court; gazebo; permanent band shell; sailors' memorial; restrooms; and accessible boardwalks and sidewalks.
- **Westminster Park**—one of the city's older parks; occupies two acres in downtown; historic band gazebo; picnic; play area; the site of many outdoor events.
- **Riverview Park**—narrow (66 feet) park located at the east end of Riverview Street; grass area and bench; scenic view of the mouth of Trout River at Lake Huron; local residents planted perennials.
- **Sports Park**—three-acre site houses a ball diamond in summer and ice rink in winter. A basketball court is also on-site. Barrier-free restrooms and warming shelter; in-line hockey facility.
- **South Shore Park and Little League Fields**—17-acre site includes ½ mile of Lake Huron shoreline; four regulation softball and Little League fields; dugouts; fencing; bathrooms; concession stand; south trail head for Huron Sunrise Trail. Nearby attractions are **Optimist Park** playground and **Coral Fossil Park** which encourages users to dig for Devonian Period fossils.
- **Rogers City Marina**—Situating in Lakeside Park, the marina features 140 seasonal slips and transient slips, with additional space available for overflow. The breakwall was extended for safe dockage and includes a barrier-free fishing platform. Rogers City retail and service establishments are within easy walking distance. Marina amenities include: barrier-free restrooms/showers; electricity, water, and pump-out; gasoline and diesel fuel; boat launch; long-term parking; fishing pier; dog run; grills/picnic tables; fish cleaning station; laundry facilities; playground/park adjacent.
- **Public Works Park** – 6 acres with 1,000 feet on Lake Huron and the City's wastewater treatment facility. The current proposed use at this site is a picnic area and potentially a dog park.
- **Tennis courts**—located on Rogers City School property.
- **Huron Sunrise Trail** – 11.1-mile paved system connecting city parks and outlying attractions. The trail follows the Lake Huron shoreline, providing access to the marina and fishing platform, then winds along a renaissance zone and wooded area along the Trout River and ends in Herman Vogler Conservation Area. The trail connects the city to 40-Mile Point Lighthouse Park.
- **Snowmobile Trail** – in 2008, snowmobile trail No. 996 into Rogers City was completed.

Onaway

- **Edna Lound Recreation Area**—three ballfields; fencing; dugouts; tennis courts, basketball courts; horseshoe pits; concession stand; community building.
- **Maxon Field**—ballfield; ice rink in winter.
- **Chandler Park**—pavilion with electric, picnic tables and grills; playground; walking/jogging pathways; site of memorial Christmas tree program.
- **Future potential NEST Trailhead** – as of December 1, 2016, the City of Onaway is considering a location for a new trailhead that will serve users along the NEST and another local park. The City of Onaway intends to apply for a MDNR grant for this project.

Village of Millersburg

- **Trailhead** for North Eastern State Trail.
- **George W. Russell Memorial Park**—located on the Ocqueoc River; swimming; pavilion; picnic area; basketball court.
- **Old Millersburg Railroad Depot**—the only remaining depot building in the County; recently acquired by the Village; Millersburg Historical Society plans to restore the building as a museum.

- **Presque Isle County Fairgrounds**—long-term lease of land to the Presque Isle County Fair Board; Fair Board owns building.
- **Village ballfields**—used by Little League.
- **Case Township Community Center** with playground equipment, exercise room, and gym; and library

Presque Isle Township

- **Old Presque Isle Lighthouse Park**—built in 1840 and was lit until 1871; Township acquired in 1995; features tower, keeper’s cottage with museum, bell. Connects to walking and hiking trails.
- **New Presque Isle Lighthouse Park**—built in 1870 to replace “old” lighthouse; Township acquired in 1998; Coast Guard operates automated light; features tower, original keeper’s house with museum and gift shop, 1905 “new” keeper’s house, Garrity Hall, picnic shelter, playground.
- **Range Light Park**—constructed in 1870; light still guides craft into Presque Isle Harbor. An accessible boardwalks and picnic pavilion were constructed in 2015.
- **Safety Trails along Grand Lake Road**—paved 6’ shoulders on each side of the road created a total of five paved trail miles connecting Whiskey Point Road to Presque Isle Harbor.

Village of Posen

- **Posen Village Park** is located on a Michigan Historic Site (50’ X 150’) where the first utility pole (set by Presque Isle Electric Cooperative) was erected in 1937. Established in 1935, the Rural Electrification Administration (REA) was a New Deal program designed to help cooperatives provide low-cost power to rural areas. In 1937, the Presque Isle Electric Cooperative energized its first 70 miles of line from Norway Dam in Alpena to Moltke Township bringing electricity to 82 families. An historic marker and monument is located at the site. In addition, the park contains playground equipment.

Posen Township

- **The Posen Community Center** is located on a five-acre lot in the Village of Posen. The Posen Chapter of the Knights of Columbus occupies the upper level of the facility. The event facility contains barrier-free parking, a bar, kitchen, barrier-free restrooms, stage, and open area for tables. In addition, the property contains a barn which is used for fee-based boat storage in the winter and for events in warm weather.
- A **ballpark** is jointly-owned by Posen Township, the Village of Posen, and Posen Consolidated Schools. It is located on 6.8 acres in Posen Township immediately outside of the Village limits. The property is maintained by Posen Consolidated Schools and is used for high school baseball. The North Eastern State Trail is located within 0.5 miles of the ballpark.

Metz Township

- **Metz Fire Memorial & Township Hall** - This site consists of an historic marker denoting the Metz Fire of 1908. Also on-site is the Metz Township Hall where barrier-free parking is available.
- **Metz Fire Historical Trailside Park** – along the NEST and CR 441; described further on page 3-16.

INLAND LAKE ACCESS SITES

The sites listed below are in addition to the major marinas/harbors. Numerous other informal lake access or road-end sites exist throughout the County and are not listed. Many of these informal sites are maintained by the Presque Isle County Road Commission.

- **Tomahawk Creek Flooding**—DNR operated in Allis Township
- **Little Tomahawk Lake**—DNR operated in Allis Township
- **Bear Den Lake**—DNR operated in Allis Township
- **Rainy Lake**—DNR operated in Case Township
- **Lake May**—DNR operated in Bismarck Township
- **Lake Emma**—DNR operated in Bismarck Township
- **Lake Nettie**—DNR operated in Bismarck Township
- **Lost Lake**—DNR operated in Bismarck Township
- **Lake Ferdelman**—DNR operated in Bismarck Township
- **Sunken Lake**—Alpena County operated in Posen Township; also has 60 modern campsites, fishing, boating, swimming
- **Long Lake**—DNR operated in Presque Isle Township
- **Grand Lake**—DNR operated in Presque Isle Township
- **Lake Esau**—owned by Presque Isle Township

- **Black Lake**—Onaway State Park
- **Ocqueoc Lake**—Road Commission maintained in Ocqueoc Township
- **Grand Lake and Long Lake sites along US 23**—MDOT owned, Road Commission maintained in Krakow and Presque Isle Townships
- **Grand Lake sites on Black Bass Road and County Road 638**—Road Commission maintained in Krakow Township

LAKE HURON ACCESS SITES

- Hammond Bay State Refuge Harbor
- Ocqueoc Public Access
- Grace Road Access
- Hammond Bay Access Site
- MDOT Roadside Park
- Seagull Point Park
- Northshore Park
- Rogers City Marina
- Lakeside Park
- Thompson's Harbor State Park
- Presque Isle State Harbor
- Bell River Access
- Rockport Boat Launch
- 40 Mile Point Lighthouse Park
- Ball Diamond Park
- Golden Beach
- Hoeft State Park
- Manitou Beach Road
- New Presque Isle Lighthouse Park
- Presque Isle Township Range Light Park
- Besser Natural Area
- Jon Keldsen Roadside Park

OTHER PUBLIC RECREATION FACILITIES

- **Rogers City Theater**—owned by Presque Isle District Library; live theater and movies in 3D and digital format.
- **Presque Isle District Library**— District Library Board; locations in Rogers City, Onaway, Posen, Presque Isle Township, and Millersburg.
- **Presque Isle County Historical Museum**—operated by the Presque Isle County Historical Society in the former Bradley House.
- **Onaway Historical Museum**—operated by the Onaway Historical Society in the historic Onaway Courthouse (in the process of acquiring Masonic Hall which will be renovated to accommodate the museum).
- **Rogers City Senior Citizens Center**—private non-profit; meals; organized activities.
- **Great Lakes Lore Maritime Museum**—in Rogers City; private non-profit.
- **Presque Isle County Council on Aging Centers**—locations in Onaway and Posen; congregate meals; organized activities.
- **Kirtland's Warbler Study Area** – south on M-33 to well-marked area in Onaway.

PRIVATE AND SEMI-PRIVATE RECREATION FACILITIES

- **Stoney Links Golf Course**—18-hole membership and public course in Onaway; driving range; putting green; pro shop; bar & grill.
- **Rogers City Country Club**—18-hole membership and public golfing organization.
- **Visitor Information Center**—Rogers City Chamber of Commerce.
- **Nautical Lanes**—private; bowling; restaurant and bar.
- **Driftwood Motel Indoor Pool**—private.
- **Quarry View**— Carmeuse Lime & Stone quarry, the largest open pit limestone quarry in the world.
- **Harbor View** – View the loading of Carmeuse Lime & Stone onto shipping fleets at the harbor.

- **Onaway Motor Speedway and Motocross Track**—private; open seasonally.
- **Hemlock Hills on Mill Pond, LLC**—private; vacation rentals and special event venue.
- **Presque Isle Harbor Association**—private membership; clubhouse with pool, game room, gym, exercise room; North Bay beach/beach house; Grand Lake common area with boat launch, swimming beach, picnic area, playground, boat rentals; 60-site modern campground; Lake Esau Park; Burnham’s Landing Park; nature trails.
- **Presque Isle Athletic Club** – private.
- **TLC Ranch.**
- **Presque Isle County Sportsmen’s Club**
- **Awakon Park in Onaway** – a privately owned/maintained park, open to the public, featuring iron sculptures designed and built by Moran Ironworks of Onaway. Also features the ruins of the American Rim/Lobdell Company that built wooden bicycle rims and wooden steering wheels for the emerging auto industry at the turn of the 20th century
- **Tour America Bike Shop** at 268 2nd Street, Rogers City – private business offering bicycle rentals, sales and service
- **Grand Lake Association Park** (Birch Hill Subdivision) in Presque Isle Township. The park is maintained by the Grand Lake Association and offers a tennis court, basketball court, volleyball court and playground equipment. The historic Kauffman House is located on the site and is used as a gift shop.
- **Camp Chickagami** is located at the north end of Lake Esau on 100 acres in Presque Isle Township, and is a private recreational group camp owned by the Episcopal Church Diocese of Eastern Michigan. The site contains Fletcher Hall (meals and indoor recreation), St. Andrew’s Chapel, beach area, fields, trails, campfire sites, three lodges, and cabins and dorm units for lodging.
- **The Lorien Retreat** is located on the northwest side of Long Lake in Presque Isle Township and is a 19-acre church-owned private facility. The facility is used for such activities as Marriage Encounters and religious retreats and is also rented to the public on a weekly basis during the summer months.
- **The Great Lakes Christian Retreat Center** is a privately-owned facility located on the 48-acre Brown Island in Grand Lake and is used as a youth retreat.

TRAILS

The 132 miles of snowmobile trails in Presque Isle County are maintained by the Presque Isle Sno-Trails Club with funding from the State, donations and volunteer labor. The Club and MDNR are in continuous negotiations to expand snowmobile trails, in particular the former railroad spur from Posen into Rogers City and finding a connector route from the Silver Creek Trail (near M-68 and Snowmobile Trail No. 99) into Rogers City.

- **Huron Sunrise Trail** - The Huron Sunrise Trail is an 11.1-mile paved trail system which connects the Roger’s City parks and Herman Vogler Conservation Area, then extends to 40-Mile Point Light between US 23 and the Lake Huron shoreline; the extension of the original trail to Hoeft State Park was completed in 2003 and the extension to 40-Mile Point Light was completed in 2009. Both extensions were constructed with Transportation Enhancement funding from the Michigan Department of Transportation.
- **North Eastern State Trail (NEST)** —snowmobiling from Dec. 1 to March 31; multi-use non-motorized rest of year; the trail is a 71-mile rail trail which connects Alpena to Cheboygan. Construction was completed in 2011 with a 10’ crushed limestone surface and two foot shoulders, new safety signs, access control and mile marker posts. The MDNR, which owns and manages the trail, has been working with the Michigan Department of Transportation (MDOT) which completed the engineering for the project and is responsible for project oversight. The Top of Michigan Trails Council (TOMTC) helped create the funding package for the trail project including 60% through a Federal Transportation Grant, 20% from MDOT, 15% from the DNR via the Michigan Natural Resources Trust Fund Grant and 5% from local units of government.

Recently, the MDNR received funding to provide the NEST with **wayfinding signs**, which include large trailhead kiosks at Aloha State Park, Tower, Onaway and through Millersburg, Bolton, Cathro, Hawks, Posen and Alpena. Each town is going to have a “welcome sign” on the kiosk. Mile markers will also be installed indicating how far it is to the next town. This is a pilot project for the DNR, as an example for what could be done for trail signage on other DNR-owned trails in Michigan. Estimated completion of the project is in 2017. Signs will be located with enough clearance from the trail so as not to impede snowmobile trail grooming equipment.

In 2016, Metz Township completed the **Metz Fire Historical Trailside Park**, located between the NEST and CR 441. Utilizing an MNRTF Grant awarded to the Township, the project included the construction of a pavilion, playground, bathroom facilities, picnic grills, water fountain, landscaping and park pathways. Local funds were used to install historic signage at the park describing the catastrophic 1908 Metz Fire. Future plans include developing a few rustic campsites, a rail car display, and an original relief shack that was built for survivors of the 1908 fire.

Just a few miles northwest of Metz along the trail, **Hawks Community Park** offers trail users water facilities and a picnic area.

- **Millersburg Depot Regional Trailhead Park** – as described on page 3-7 of this plan. The MDNR plans to complete the reconstruction of the Ocqueoc River Trail Bridge by December of 2016.
- **Silver Creek Snowmobile Trail**—Millersburg connecting to Black Mountain Snowmobile Trail
- **Connector Snowmobile Trail to Montmorency County**—Millersburg connection to Atlanta
- **Thompson’s Harbor State Park Trail System**—bicycles on designated roads; hiking/cross-country skiing on three loops for a total of 6.4 miles
- **Shoepac Sinkhole Trails**—hiking/cross-country skiing on two loops for a total of 2.25 miles
- **Ocqueoc Falls Bicentennial Pathway**—hiking, cross-country skiing and mountain biking on three-, four- and six-mile loops
- **Black Mountain Recreation Area**—Presque Isle and Cheboygan counties; 40 miles for hiking/ cross-country skiing, mountain biking and horseback riding; 80 miles of snowmobile trails; 60 miles ORV trails
- **High Country Pathway**—biking/hiking; passes through Allis Township
- **Seagull Point Nature Trails**—walking/hiking; Rogers City
- **Onaway State Park**—walking/hiking
- **Hoelt State Park**—walking/hiking/cross-country skiing
- **Besser Bell Natural Area**—one-mile trail through stand of virgin pine and abandoned Village of Bell; walking/hiking/cross-country skiing
- **Vogler Conservation Area**—7 miles of walking/hiking/cross-country skiing
- **Sweetwater Trail**—highway trail along Great Lakes coastline identifies sites of interest
- **Huron Greenways**—system of land and water trails for Alcona, Alpena, Cheboygan and Presque Isle counties; identifies sites of interest

FESTIVALS AND EVENTS

- Black Mountain 31K Nordic Classic and 10 KM Tour—Feb; Black Mountain Recreation Area
- Nautical Frost Festival – Feb; Rogers City
- Grand Lake Sportsmen’s Club Ice Fishing Contest - February
- Girls on the Run “Color Run” – May; Rogers City
- 40 Mile Point Lighthouse Open House/Arts & Crafts Show – May at the Lighthouse, N. of Rogers City
- Spring Fling—May; Hawks
- Spring Fest – June; Westminster Park, Rogers City
- Wooden Boat Show—June; Presque Isle Harbor
- 4th of July Festival—July; Onaway
- Presque Isle County Fair—July; Millersburg
- Fat Hogs Ladies’ Fishing Tournament – July; Rogers City
- Grand Lake Sportsmen’s Club Fishing Contest - July
- Meteors and S’mores –August; Rockport State Recreation Area
- Nautical Festival—August; Rogers City
- Fishing Tournament—August; Rogers City
- 5K Wellness Walk/Run – August; Chandler Park, Rogers City
- Nautical Sprint Triathlon – September; Rogers City
- Posen Potato Festival—September; Posen
- Fall Fest – September; Westminster Park, Rogers City
- Lake Huron Discovery Tour – October; US 23 Heritage Route
- Haunted House “Scream in Wolverine” —October; Onaway
- Scarecrow Contest – October; Rogers City
- Discover Rogers City Scavenger Hunt – October
- Shop Local Xmas Passport – November; Rogers City
- Chandler Park Tree Lighting—November; Onaway
- Xmas Decorating Contest – December; Rogers City
- Christmas Tree Lighting & Parade in Rogers City – December

RECREATIONAL FACILITIES IN SCHOOLS

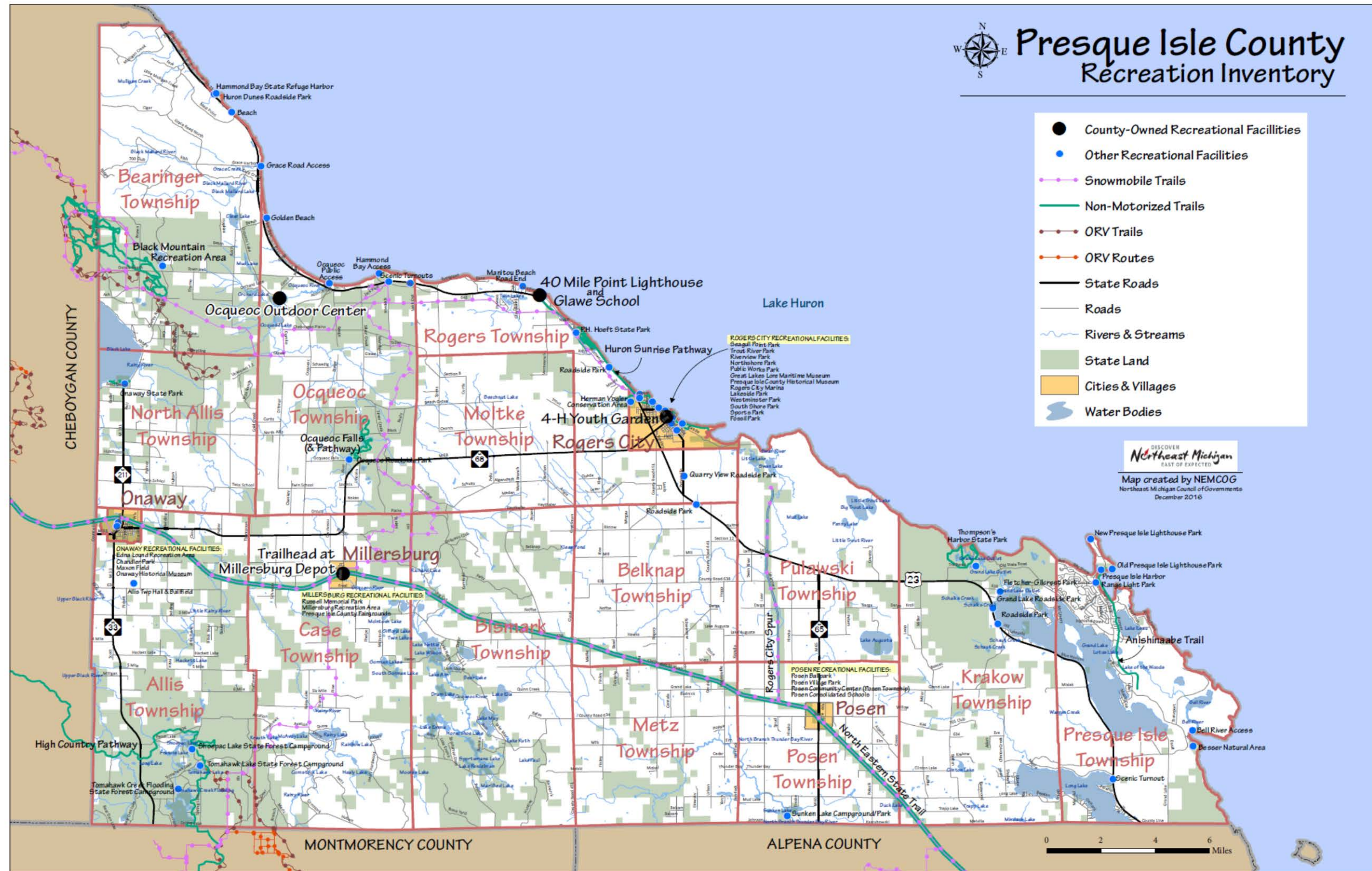
- Rogers City Area Schools—High School practice football field, track, gym, weight room; Elementary School playground, gym; Gilpin Field football field, baseball and softball fields; Tennis courts on school property are owned by Rogers City.
- Posen Consolidated School—gym, weight room, playground, football field, track. The school was updated in 1995-96 to be ADA-accessible.
- St. Ignatius Elementary School Rogers City—gym, playground
- St. John’s Lutheran School Rogers City—playground
- Seventh Day Adventist School Onaway—playground
- Rogers City Montessori and playground
- Rogers City Baptist Academy—playground
- The Northeast Michigan Great Lakes Stewardship Initiative (NEMIGLSI) provides conservation education programs to students in the local school districts. NEMIGLSI strives to build vibrant, sustainable communities committed to empowering young people as environmental leaders and social entrepreneurs. The NEMIGLSI network achieves this vision by: facilitating school-community partnerships; funding innovative, collaborative student-driven projects; providing targeted training opportunities for students and teachers; and coordinating communities of learning.

US 23 Heritage Route

The US 23 Heritage Route extends 200 miles from Standish to Mackinaw City and is called the “Huron Shores Heritage Route”. Each county along the route has an active Heritage Route Team and participates in an overseeing Management Council. The Presque Isle County Heritage Route Team consists of volunteers interested in tourism and history. Each year, the county teams and the Management Council work toward implementing projects which are stated in the US 23 Heritage Route Management Plan. A landmark project has been the award-winning website www.heritage23.com which provides an interactive one-stop shop of things to see and do along the county-wide Heritage Route corridor. In addition, the Heritage Route publishes maps and brochures highlighting recreational amenities. The “Sunrise Coast” partnership in the Pure Michigan campaign has also helped to increase exposure of recreation in Presque Isle County. Therefore, the US 23 Heritage Route program assists with promotion of public and private recreational facilities in the county.

Refer to **Figure 3-3: Recreation Inventory Map** on the next page to view most of the publicly available recreation facilities in the County.

Figure 3-3: Recreation Inventory Map

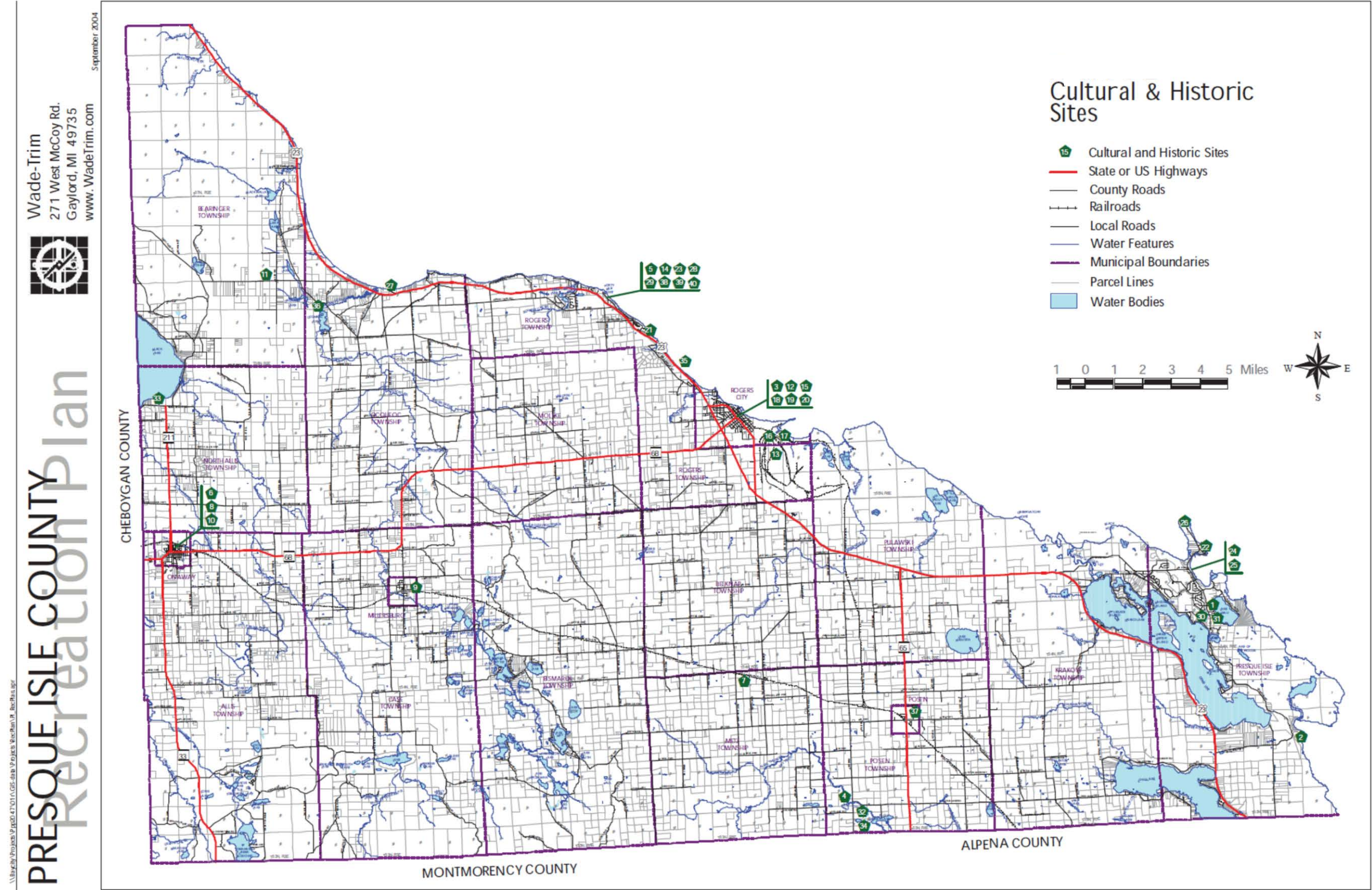


CULTURAL AND HISTORICAL TOURISM SITES IN PRESQUE ISLE COUNTY

Lumber/Farming/Settlement Sites	Date	City/Township
1. Kauffman House	1862	Presque Isle Twp.
2. Town of Bell (ghost town)	1870's	Presque Isle Twp.
3. Kitchen House	1870's	Rogers City
4. Elowsky Grist Mill	1870's	Posen Twp.
5. Glawe School	1885	Ocqueoc/Rogers Twp.
6. Lobdell Office (Masonic Temple)	1901	City of Onaway
7. Metz Fire Memorial	1908	Metz Twp.
8. Onaway Courthouse	1908	City of Onaway
9. Millersburg Railroad Depot	1917	Village of Millersburg
10. Onaway Fire Hose Tower	unknown	City of Onaway
11. Bearinger Township Hall	1920	Bearinger Twp.
12. Paul Hoeft Crypt	unknown	Rogers City
Mining/Steelmaking/Shipping History	Date	City/Township
13. Crawford's/Calcite Quarry	1912	Rogers City
14. Calcite Pilot House	1912	Rogers Twp.
15. Bradley House (museum)	1914	Rogers City
16. Calcite Power House	1920's	Rogers City
17. Calcite Screening Tower	1920's	Rogers City
18. Calcite Worker Housing	1920's	Rogers City
19. Bungalow Row	1920's	Rogers City
20. Great Lakes Lore Museum	NA	Rogers City
Maritime History Sites	Date	City/Township
21. Sacred Rock (Native American)	Pre-1870	Rogers Twp.
22. Old Presque Isle Lighthouse	1840	Presque Isle Twp.
23. F.T. Barney Shipwreck	1855-68	Lake Huron
24. Burnham's Landing	1860's	Presque Isle Twp.
25. Presque Isle Range Light	1870	Presque Isle Twp.
26. New Presque Isle Lighthouse	1871	Presque Isle Twp.
27. Hammond Bay Lifesaving Station (USF&W lab)	1876	Ocqueoc Twp.
28. 40 Mile Point Lighthouse	1897	Rogers Twp.
29. Steamer Fay Shipwreck	1905	Rogers Twp.
Resorts/Recreation/Tourism	Date	City/Township
30. Fireside Inn	1908	Presque Isle Twp.
31. Presque Isle Lodge	1920	Presque Isle Twp.
32. Mystery Valley	1920's	Posen Twp.
Depression Era Sites	Date	City/Township
33. Onaway State Park	1920	North Allis Twp.
34. Sunken Lake County Park (Alpena Co.)	1920	Posen Twp.
35. Hoeft State Park	1921	Rogers Twp.
36. Black Lake CCC Camp	1933	Ocqueoc Twp.
37. Posen REA Memorial	1937	Village of Posen
38. WPA Airport Hangar	1937	Rogers City
39. WPA Aerial Sign	late 1930's	Rogers City
40. WPA Mural-Rogers City Post Office	1941	Rogers City

Refer to **Figure 3-4 Historic and Cultural Sites Map** on the next page.

Figure 3-4: Cultural and Historic Sites Map



CHAPTER 4

DESCRIPTION OF THE PLANNING PROCESS AND PUBLIC INPUT METHODS

Development of a community recreation plan must involve interaction and input from citizens and community groups. The Presque Isle County Planning Commission was the lead entity in developing this recreation plan. County Planning Commission and Board of Commissioners meetings were open to the public with time allocated for comments. Below is a timeframe for the development of the recreation plan update.

SCHEDULE

September, 2016	Recreation Plan Sub-committee of the Presque Isle County Planning Commission contracts with NEMCOG for assistance in updating the 2012-2016 Recreation Plan.
October/November, 2016	NEMCOG staff completed site visits and barrier-free assessments of recreation facilities as needed for the plan update. NEMCOG staff drafts questions for a public input survey and drafted plan chapters.
November 1, 2016	Recreation Survey available to the public, as posted on www.discovernortheastmichigan.org (NEMCOG's website).
November 10, 2016	An article appears in the <i>Presque Isle County Advance</i> publicizing the recreation survey.
November 15-17, 2016	The survey was publicized online and over their air on WATZ 99.3 FM/96.7 FM (watz.com) and on 101.7 FM (truenorthradionetwork.com), as well as on the Facebook pages for Rogers City Chamber of Commerce and Onaway Chamber of Commerce.
November 17, 2016	NEMCOG staff attended County Planning Commission/Recreation Plan Subcommittee meeting to review and revise the draft plan and review the timeline for completing the plan.
November 21, 2016	NEMCOG staff attends a meeting of the <i>Friends of Ocqueoc Outdoor Recreation Center</i> to obtain updates to the goals, objectives, actions and funding sources for the Center over the next five years.
November 28, 2016	Recreation survey closes; 86 people responded to the survey. NEMCOG provide a summary of survey responses to the Planning Commission.
December 1, 2016	An article appears in the <i>Presque Isle County Advance</i> announcing the draft plan is available for 30-public review; a hard copy of the plan is also made available at the Presque Isle County Library. The notice is

also publicized on the local radio stations and Facebook pages for local Chambers of Commerce, as well as NEMCOG's webpage.

December 31, 2016	The 30-day public review period ends.
January 19, 2017	The Presque Isle County Planning Commission passes a Resolution of Adoption for the plan at their regular meeting and also recommends that the Board of Commissioners adopt the plan. A notice is published in the <i>Presque Isle County Advance</i> announcing a public hearing on the plan on January 27.
January 27, 2017	The public hearing was held and the Presque Isle County Board of Commissioners approved the Recreation Plan.
February __, 2017	The completed Recreation Plan was sent to the Department of Natural Resources (via www.MiRecGrants.com), Northeast Michigan Council of Governments, and Presque Isle County.

PUBLIC INPUT

During the planning process for this Recreation Plan update, an online public survey instrument was used to offer local residents the opportunity to provide input about recreation in Presque Isle County. The survey was open for 28 days and was publicized in the *Presque Isle County Advance* newspaper and on NEMCOG's website. A total of 86 people participated in the survey, although not every person elected to complete all the survey questions. The Planning Commission felt that the community was adequately represented, given that if a public input session would have been held, likely fewer people would have shown up to participate via that method. Participants were asked to identify recreation needs or desires, what recreation facilities they use, and what recreation activities they participate in.

A brief analysis of the survey results is provided below:

- The 40 Mile Point Lighthouse/Glawe School is the most utilized county park facility, with 82% of respondent indicating they use the facility occasionally. The Ocqueoc Outdoor Center is used less frequently, with 50% of respondents saying they use it occasionally and 41% saying they never use it. Only 30% of respondents use the Trailhead along the NEST in Millersburg (65% say they never use it). The 4-H Youth Garden is used the least, with 90% saying they never use it.
- The top four to five (out of 16) activities participated in at the County's parks are:
 - 40-Mile Point Lighthouse/Glawe School
 1. Lighthouse Tower
 2. Nature Viewing
 3. Other Historic Features
 4. Hiking
 5. Biking
 - Ocqueoc Outdoor Center
 1. Nature Viewing

2. Hiking
 3. Fishing
 4. Other Historic Features
 5. Picnicking
- Trailhead in Millersburg for NEST
 1. Biking
 2. Hiking
 3. Nature Viewing
 4. Snowmobiling
 5. Picnicking
 - 4-H Youth Garden
 1. Gardening
 2. Volunteering
 3. Nature Viewing
 4. Special Events/Workshops

Suggested Improvements to the 40-Mile Point Lighthouse /Glawe School:

- Provide more parking in an organized fashion
- Wider, accessible walkways; ramps to access buildings; improved walkways to the beach area
- Benches near beach
- Remove poison ivy
- Longer park hours
- Issue with gift shop times of operation – guests find a sign indicating it’s open and it is not open.
- Maintenance
- More trails
- Upgrade interpretive displays, photo collection, and restrooms
- Continued efforts by volunteer group; get new, younger volunteers to help with the work.
- Do more to educate visitors about other things to do in Rogers City and the County – do a joint promotion
- Glawe School – personal stories (written, audio recordings, video recordings) and more hours available.

Suggested Improvements to Ocqueoc Outdoor Center:

- Updates to all buildings and overall repair of roofs, foundation, weatherization, sidewalks, make accessible/up to code, fix garage doors, picnic facilities
- Kitchen/Dining Hall: kitchen tools, storage shelves, grates or floor mats at doorways, anti-fatigue floor mat in kitchen; more seating; add half bathroom
- Better signage, upkeep and overall promotion
- Historical signs and museum displays
- Develop campsites and rental house
- Boat rentals
- Fishing dock/pier on Ocqueoc Lake
- An outdoor shelter to be rented out by the public

Suggested Improvements to the 4-H Youth Garden:

- Places to sit
- Educational signage, crafty art signs to know what is planted
- More volunteers; Needs a focused Adult volunteer and support from the community
- Interactive educational tools and games
- An irrigation system to make sure raised beds are watered in a timely fashion
- Wildlife habitat (bees, butterflies, birds, bats)
- Publicity and organized activity
- Develop a Community Garden

Suggested Improvements to the NEST Trailhead in Millersburg

- A snowmobile trail to get from Grand Lake to the NEST
- More signs about the trails
- [Offsite] museum open more hours
- Accommodations when it's raining to make sure planned activities can go on as scheduled
- Surveillance – some people were recently hunting here when we were wanting to take a walk
- More restrooms along the trail

What recreational opportunities are missing in the County?

Many of the responses to this question pertained to the improvement and expansion of the non-motorized and motorized trail systems in the County:

- Connect interior trails to coastal trails
- Extend bike path north of 40-Mile Point
- More trailheads improve trail accessibility
- Campsites along trails
- Improve/expand on trails for: biking (7 requests), hiking (3), groomed XC skiing (2), snowmobiling (2), motorized trails (1), nature center walk (1)

A number of responses also indicated a need for more water-based recreation opportunities:

- More opportunities for kayaking snorkeling, swimming lessons,
- A kayak launch
- Water/splash park
- Stocked trout pond to start kids fishing
- Kayak rental at Ocqueoc Outdoor Center
- Ability to rent equipment such as kayaks, SUP boards, snowshoes, etc.
- Public access for shore-fishing
- Better canoe/kayak access to rivers

Other suggestions:

- Affordable golf
- More playground areas (outside of Rogers City)
- Better tennis courts
- DNR shooting range
- Public access to the “disappearing river” along the Little Ocqueoc River
- Stargazing events
- Organized geocaching events

The majority of respondents indicated they would support the expansion and protection of non-motorized and motorized trail network and trail amenities in the County, as well as the development of a new public park in Ocqueoc Township to showcase Karst topography/underground river.

The top ten recreational activities that survey respondents enjoy are:

1. Walking (75.36%)
2. Hiking and Bicycling (68.12% each)
3. Wildlife and Nature Viewing (65.22%)
4. Kayaking (55.07%)
5. Festivals (53.62%)
6. Fishing (52.17%)
7. Theaters (live & cinema) (49.28%)
8. Picnicking (47.83%)
9. Concerts (44.93%)
10. Camping and Canoeing (43.48% each)

The majority of survey respondents (56%) were of age 61 or older; one-third were aged 41-60 years, and 10% were of age 21-40 years old. While most of them live year-round in the County, 11 respondents have permanent residences outside the county.

Following are images of the advertisements for the public input methods used in developing this recreation plan, as well as a summary of survey results/public comments received. A copy of the Recreation Survey questions and responses is included as **Appendix D**.

Online Recreation Survey Publicity

Online Survey Notice Published in November 10, 2016 Edition of *Presque Isle County Advance*

Sheriff updates board on radio consoles and towers

by Angie Asam
Staff Writer

Radio towers have been a hot topic of discussion at Presque Isle County Board of Commissioners meetings throughout the last year. Coupled with the tower discussion comes the discussion of the equipment the county has to facilitate the 9-1-1 program. On Oct. 28 Sheriff Bob Paschke updated the board on the work being done by Tele-Rad.

"Just quickly a little update on the radio console system. Engineers are working on things, hopefully I will have a more thorough report at your next meeting. What we are looking at, our consoles will not reach out to the Michigan Communication System, so we would have to upgrade," said Paschke.

Right now the county is doing work to decide what the next step is for the 9-1-1 system.

The current owner of the radio tower in Mohr is looking to get out of the tower business and Alpena

County is looking to be reimbursed for dispatch of the East Grand Lake and Presque Isle Fire Departments and emergency services.

For at least the past 25 years, dispatch for those units has come from Alpena County using radio towers at Rockport and Manning Hill.

The tower at Rockport previously was used by the Alpena Township Fire Department; however, is now only used for East Grand Lake.

Alpena County proposed charging Presque Isle County \$2,500 a month to continue providing that service and cover costs. Alpena County was asking for approval of the agreement effective Oct. 1. Presque Isle County asked for and was granted a 90-day extension.

Purchasing new radio consoles, with a price tag of around \$250,000 each, as the county uses a two-console system, would be a step in the right direction. The county could then use the Michigan Communication System the work the county is doing.



CENTRAL DISPATCH in Presque Isle County is in need of new radio consoles that could reach the state communication towers and eliminate the issue with Alpena County dispatching East Grand Lake and Presque Isle Fire Department as well as have the county out of the tower-owning business in Mohr. (Photo by Angie Asam)

Replacement of customs agent priority for RC and Alpena

by Angie Asam
Staff Writer

With the retirement of the past customs agent that served Rogers City and the surrounding area, city officials have been busy working to get a replacement.

The latest development in the push to have an agent locally has resulted in a joint effort with the city of Alpena, Alpena County, Alpena Area Chamber of Commerce and Alpena County Regional Airport.

A letter to U.S. Sens. Gary Peters and Debbie Stabenow as well as U.S. Rep. Dan Benishew, Gov. Rick Snyder and state sen. Jim Stamas, has been drafted and sent.

City manager Joe Hefele believes the next step is for community leaders to talk to the sides for those legislators and see what else can be done.

When the retirement of the agent was announced, the city was informed that there were plans to replace the agent and that Rogers City would lose its port of entry status. Private boat traffic entering U.S. waters would

have to call the Sault Ste. Marie office for instructions to come on land. In addition, international airport traffic at the Alpena Airport would be eliminated as those planes would land in a place where U.S. Customs and Border Protection has agents.

Commercial vessels coming into the Port of Alpena, Sault Ste. Marie or Alpena would face delays working to coordinate schedules with the Sault office.

Without an agent working locally, 250 nautical miles off Lake Huron and 250 miles between Sault Ste. Marie and Alpena would exist. The move would hurt the local economy and tourism to the area.

The joint effort has

suggested the option of placing a full-time agent at the Alpena Regional Airport that could handle calls to marinas as well as commercial loading docks to provide service.

The loss of an agent serving our area, and the entirety of the northern half of Michigan's Lower Peninsula, is of great concern to us. We do believe that stationing an agent right here in Alpena would be a better use of personnel and maximize the limited resources of the department. Please work with us to explore this option and make it happen. It is not just about the needs we have but the safety and security of the entire state of Michigan and the security of the nation."

Memorial bell-tolling events scheduled at lore museum

by Angie Asam
Staff Writer

November is a busy month at the Great Lakes Lore Maritime Museum as they will host three memorial bell-tolling services.

The crewman lost in the sinking of the *Edmund Fitzgerald*, Carl D. Bradley and Daniel J. Morrell will be honored.

Saturday, Nov. 12, at 2 p.m. will be the ceremony for the *Fitzgerald*, which sank on Nov. 10, 1975 in a severe storm on Lake Superior. The ship lies in about 530 feet of water, 17 miles from Whitefish Bay in Canadian Waters.

When the *Fitzgerald* sank in waves up to 35-feet with hurricane force winds, the entire crew of 29 went down with her. When she was launched June of 1958, she was the largest ship on the Great Lakes at 730 feet

long. The ship was traveling from Superior, Wisconsin to a steel mill near Detroit when it was caught in the storm.

The sinking of the *Bradley* has strong ties to Rogers City. The bell-tolling ceremony will be Nov. 19 at 2 p.m. On Nov. 18, 1958, the ship was 12 miles southeast of Gull Island when a loud stud was heard followed by a whim. The ship broke in two and sank, taking 33 crew members with her. Twenty-three of those men called Rogers City home and 53 children were left without a father.

At 639 feet long the *Bradley* was the longest freighter on the lakes for 22 years. After completing what was supposed to be the final trip of the season, the ship was headed for Manitowish, Wisconsin for layup. A few hours from layup the ship

received an order from U.S. Steel to return to Calumet for another load of iron ore.

On Nov. 29, 1966 the *Morrell* sank in Lake Huron north of Point Aux Barques. She, too, was on her final trip of the season, when the winds were in excess of 70 miles per hour and the waves were 20-25 feet. The ship broke in two and sank with only one man surviving, Dennis Hale, who passed away of cancer in August 2015. The bell-tolling ceremony will be held Nov. 26 at 2 p.m.

BELL RINGERS are needed for the events. The events are free of charge and open to the public. After the program, visitors can tour Memorial Hall where artifacts and memorabilia from the ships listed above as well as the *Cedarville* are on display. For more information contact the museum at 734-6366.

Securing funds next step for downtown beautification project in Rogers City

by Angie Asam
Staff Writer

Similar to the campaign to save the Rogers City Theater, a fund drive will soon be kicking off to secure matching funds towards the beautification project at the intersection of Third and Erie Streets in Rogers City.

A project started by the community development authority (CDA) has taken off with a campaign focusing solely on the beautification of the area and will be produced in a few weeks. The project is ongoing and the city is awaiting word that the grant funding has been awarded and the page is live to continue efforts to raise the local match money.

ENHANCEMENTS TO the intersection include the breakwater entry light that helped guide ships into Calumet Quarry for nearly a century centered inside a compass rose. Limestone buildings and a historic ship's wheel with a stone walkway, landscaping, and a parking lot.



DRAWINGS of the beautification project are on display on an easel in the entrance to City Hall. (Photo by Angie Asam)

and signage will complete the project. Those who donate \$500 or more to the project will have their name etched in the retaining wall curving around the enclosed light.

The project is dubbed "Let's put the Nautical in Nautical City" the draft page talks about building a community space that will celebrate Rogers City's legacy and improve the downtown. And we believe that the entirety of the endeavor will really enhance our presence in Michigan's Nautical City," says the why it matters section of the mock Paternity page.

Online Recreation Survey Conducted by Presque Isle County

November 10, 2016 - The Northeast Michigan Council of Governments (NEMCOG) is assisting Presque Isle County with updating their 5-Year Recreation Plan.

This Recreation Plan identifies how the communities will work towards achieving goals and objectives for improving recreational opportunities in Presque Isle County. Communities are required to have a current, 5-Year MDNR-approved Recreation Plan in order to qualify for recreation grant funding from the Michigan DNR.

The planning process incorporates a community participation element - in this case an online survey - that encourages input from citizens. The survey takes approximately 10 minutes to complete and is available at: www.surveymonkey.com/r/PresqueIsleRec. Also, the Presque Isle County Library provides free access to public computers that will enable citizens to complete this online survey.

County officials are encouraging citizens in and around Presque Isle County to complete this survey because public input is a highly valued and vital component to shaping the future of recreational opportunities in the area. The survey will be open for a minimum of two weeks and responses are anonymous.

A BIG THANK YOU To all who supported my campaign for PI County Commissioner. John Chappa

MIKE LYNCH

ONAWAY AUTO

We are accepting bids on the following vehicles - bids must be received by NOVEMBER 15, 2016. All sales on winning bids are "as is" purchased.

Year Make/Model VIN

2002 CHEVROLET TRAILBLAZER 1G0N113572282933

2000 GMC YUKON XL 3G6C67119187833

2003 PONTIAC AZTEK 3G7DA02735527674

Contact Glen at 733-8191 21061 M-88 Hwy., Onaway, MI

ONAWAY AUTO

ONAWAY AUTO

ONAWAY AUTO

ONAWAY AUTO

ONAWAY AUTO

ONAWAY AUTO

ONAWAY AUTO

ONAWAY AUTO

ONAWAY AUTO


ONAWAY AUTO

ONAWAY AUTO

ONAWAY AUTO

Online Survey Notices on WATZ.com and truenorthradionetwork.com

com/wire/localnews/11998_z7Online_Recreation_Survey_Conducted_by_Presque_Isle_County_051341.php



Today's Country


Covering all of Northeast Lower Michigan

Wednesday, November 16, 2016 3:04 PM

- About Us
- Administrative Staff
- Cancellations
- Community
- Contests
- Home
- Music
- News
- Obituaries
- On-air Staff
- Programming
- Sports
- TradeMart
- 105.7 WZTK
- Weather

Online Recreation Survey Conducted by Presque Isle County

Tue, 15 Nov 2016 23:00:27 EST



The Northeast Michigan Council of Governments (NEMCOG) is assisting Presque Isle County with updating their Five-Year Recreation Plan.

The plan identifies how the communities will work towards achieving goals and objectives for improving recreational opportunities in Presque Isle County. Communities are required to have a current, Five-Year MDNR-approved Recreation Plan in order to qualify for recreation grant funding from the Michigan Department of Natural Resources.

The planning process incorporates a community participation element - in this case an online survey - that encourages input from citizens. The survey takes approximately ten minutes to complete and is available at surveymonkey.com/r/PresqueIsleRec. Also, the Presque Isle County Library provides free access to public computers that will enable citizens to complete the survey.

County officials are encouraging citizens in and around Presque Isle County to participate because a vital component to shaping the future of recreational opportunities in the area. The survey will be open for a minimum of two weeks and responses are anonymous.

www.truenorthradionetwork.com/index.php/2016/11/17/presque-isle-citizens-encouraged-to-take-online-rec-plan-survey/

Home » Local News, Rotating Features

Presque Isle citizens encouraged to take online Rec Plan survey

Submitted by Phil Heimerl on November 17, 2016 - 12:44 am

No Comment

[+](#) Share / Save [f](#) [t](#) [g](#) ...



Residents of Presque Isle County are encouraged to take an active role in the updating of the county's 5-year Recreation Plan.


The rec plan identifies how communities will work towards achieving goals and objectives for improving recreational opportunities.

Presque Isle County officials are currently working with the Northeast Michigan Council of Governments (NEMCOG) to update the plan, which incorporates a community participation element - in this case an online

survey. The survey takes approximately 10 minutes to complete and can be viewed at www.surveymonkey.com/r/PresqueIsleRec.

The Presque Isle County Library in Rogers City provides free access to computers for people who want to complete the online survey, which will be open for a minimum of two weeks. All responses are anonymous.

Communities are required to have a current, 5-Year Michigan Department of Natural Resources-approved rec plan in order to qualify for recreation grant funding from the DNR.

jamison

Where Member
2 convenient
to serv

THOMPSON
SERVICE



We are a Load Team
[CLICK HERE FOR MORE](#)

Recreation Plan Survey Advertised on Facebook Pages for Rogers City and Onaway Chambers of Commerce

//www.facebook.com/RCAreaChamber/



Rogers City
AREA CHAMBER OF COMMERCE
Live slow. Reconnect. Seachange.

**Rogers City
Area Chamber
of Commerce**
@RCAreaChamber

- Home
- About
- Reviews
- Photos
- Likes
- Events
- Videos
- Posts

Create a Page

Like Share More

Like Comment



Rogers City Area Chamber of Commerce
November 16 at 10:12am · 🌐

Hey! The Northeast Michigan Council of Governments (NEMCOG) is assisting Presque Isle County with updating their 5-Year Recreation Plan. This Recreation Plan identifies how the communities will work towards achieving goals and objectives for improving recreational opportunities in Presque Isle County. Communities are required to have a current, 5-Year MDNR-approved Recreation Plan in order to qualify for recreation grant funding from the Michigan DNR.

The planning process incorporates a community participation element – in this case an online survey - that encourages input from citizens. The survey takes approximately 10 minutes to complete and is available at: www.surveymonkey.com/r/PresqueIsleRec. Also, the Presque Isle County Library provides free access to public computers that will enable citizens to complete this online survey.

County officials are encouraging citizens in and around Presque Isle County to complete this survey because public input is a highly valued and vital component to shaping the future of recreational opportunities in the area. The survey will be open for a minimum of two weeks and responses are anonymous.





Onaway Community Chamber of Commerce

@onawaycommunitychamber

Home

About

Photos

Reviews

Likes

Videos

Events

Newsletter Signup

Posts

Create a Page

Like Message Share More

Like Comment Share

Onaway Community Chamber of Commerce

Yesterday at 2:31pm · Black Lake ·

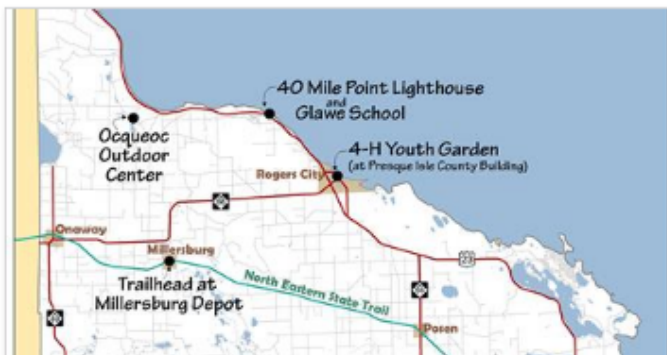
November 10, 2016 – The Northeast Michigan Council of Governments (NEMCOG) is assisting Presque Isle County with updating their 5-Year Recreation Plan.

This Recreation Plan identifies how the communities will work towards achieving goals and objectives for improving recreational opportunities in Presque Isle County. Communities are required to have a current, 5-Year MDNR-approved Recreation Plan in order to qualify for recreation grant funding from the Michigan DNR.

The planning process incorporates a community participation element – in this case an online survey - that encourages input from citizens. The survey takes approximately 10 minutes to complete and is available at: www.surveymonkey.com/r/PresqueIsleRec

Also, the Presque Isle County Library provides free access to public computers that will enable citizens to complete this online survey.

County officials are encouraging citizens in and around Presque Isle County to complete this survey because public input is a highly valued and vital component to shaping the future of recreational opportunities in the area. The survey will be open for a minimum of two weeks and responses are anonymous.



Presque Isle County Recreation Plan Survey

Web survey powered by SurveyMonkey.com. Create your own online survey now with SurveyMonkey's expert certified FREE templates.

SURVEYMONKEY.COM

Like Comment Share

JoAnn Wadsworth Donahue and Phyllis Flewelling like this.

Notice of Availability of Recreation Plan for 30 Days

Public Hearing Notice

Resolution of the Presque Isle County Planning Commission Recommending Adoption of the Recreation Plan

Resolution of the Presque Isle County Board of Commissioners Adopting the Recreation Plan

Minutes of the Presque Isle County Board of Commissioner's Meeting (including Public Hearing)

Copies of Submittal Letters

CHAPTER 5

GOALS & OBJECTIVES/ACTION PLAN

GENERAL GOAL FOR RECREATION IN PRESQUE ISLE COUNTY

Ensure the preservation of recreational resources at a level which will meet the needs of permanent and seasonal residents, as well as visitors.

IDENTIFIED OBJECTIVES

1. Expand the County's role as a recreation provider by adopting and maintaining a Recreation Plan with updates at five-year intervals and by relying on citizen volunteer services and support.
2. Identify and apply for appropriate grant funding for recreation projects.
3. Maintain and improve the 40 Mile Point Lighthouse facilities, as existing and future needs require.
4. Maintain and improve Ocqueoc Outdoor Center as a place for outdoor recreation and education.
5. Encourage the expansion and connection of snowmobile/motorized trails and non-motorized trails within the County.
6. Promote tourism and economic growth through recreation facilities development and management.
7. Promote and facilitate activities for youth through MSUE 4-H programs.
8. Establish a working relationship with the DNR in the provision of outdoor recreational opportunities.
9. Install wayfinding signage to direct visitors to and within area recreational facilities.
10. Provide a balance of recreational amenities which cater to the aging population to increase the desirability of the community to retirees.
11. Provide recreational amenities that are oriented toward younger persons and families in order to increase the livability of the community, attract young families to the area and retain older youth.
12. Improve the overall local economy by enhancing the livability of the community in order to attract entrepreneurs and encouraging the creation of new tourism-based jobs.
13. Improve the economy of the Presque Isle County area by marketing the area as part of a destination package which offers year-round tourism.
14. Support the US 23 Heritage Route Presque Isle County Team in their efforts to promote the area as a recreation destination.
15. Support the Pure Michigan Sunrise Coast campaign.

The action plan is presented below. Anticipated funding sources will be in the form of cash from the County general fund, non-profit organizations, private contributions, donated labor and materials, and several grant sources. MDNR grant sources include the Michigan Natural Resources Trust Fund, Recreation Passport Grants, and Land & Water Conservation Fund Grants. MDEQ grant sources include Clean Michigan Initiative and Coastal Management. MDOT funding for non-motorized transportation improvements is the Transportation Alternatives Program. Other appropriate grant programs will be explored as needed.

CAPITAL IMPROVEMENTS AND PROGRAMS – FIVE-YEAR PLAN¹

40- Mile Point Lighthouse Park		
Year²	Improvement or Program	Estimated Cost/Anticipated Funding Source
	<ol style="list-style-type: none"> Continue renovations to the keeper's house 40 Mile Lighthouse Society to continue operations "Night at the Lighthouse" during the annual Great Lakes Lighthouse Festival On-site caretaker Clean & mark walking trails Signage (trees, flora, etc.) Storage shed construction Caretaker residence Conversion of current caretaker residence to museum/expand museum. Video kiosk (with views of interior) ADA accessible path to beach and shipwreck Handicap accessible restroom entrance Golf cart/transport vehicle 	<ol style="list-style-type: none"> County funds, plus Society funds and in-kind 2 & 3. Society funds 4-12. County funds, society funds, in-kind, and grant programs including MDNR and historic grant sources. \$3,000 \$2,500 \$20,000 \$50,000 TBD \$10,000 \$15,000 \$10,000 \$10,000
Glawe School		
Year	Improvement or Program	Estimated Cost/Anticipated Funding Source
	<ol style="list-style-type: none"> Continue artifacts search 	<ol style="list-style-type: none"> Donations
	<ol style="list-style-type: none"> Glawe School Committee to continue operations 	<ol style="list-style-type: none"> Committee Funds

¹ All costs are estimates only. Actual costs may be less than or greater than the estimates. Projects may be implemented contingent upon the availability of grant funding and are not listed in any prioritized order.

² May indicate "2017-2021" for each item, or a specific year or period of time (i.e., 2018, 2018-2019, etc.)

Ocqueoc Outdoor Center ³		
YEAR	PROJECT	EST. COST⁴
	General Upgrades	
	1. Inspect and upgrade/replace roofs as needed*	\$60,000
	2. Control pest issues*	\$4,000
	3. Upgrade wiring*	\$30,000
	4. Repair and replace sidewalks*	\$12,000
	5. Update heating/cooling in all buildings*	\$40,000
	6. Turn log cabin into a heritage center with exhibits; pest control*	\$60,000
	7. Install fire/smoke alarms as needed*	\$4,000
	8. Repair or replace septic tank/drain field*	\$25,000
	9. Foundation repair in kitchen and other buildings as needed*	\$20,000
	10. Upgrade outdoor lighting	\$15,000
	11. Create open air pavilion by lakeside	\$15,000
	12. Maintain two maintenance positions	\$8,000
	13. Purchase rec. equipment (canoes, kayaks, paddles, life jackets)	\$1,500 (?)
	14. Maintain and expand trail system to tie in with adjacent trails	\$10,000
	15. Weatherproof buildings	\$10,000
	16. Upgrade entrance ramps to meet building codes for accessibility	\$21,000
	17. Replace/enlarge entry awnings	\$5,000
	18. Renovate staff/media/first aid building	\$40,000
	19. Fishing platform	\$25,000
	20. Rebuilt fire pit and seating by lakeside	\$5,000
	21. New windows/screens	\$40,000
	22. Install directional/interpretive signage	\$10,000
	23. Continue marketing campaign with ads, open house, letters, fundraising committee.	\$10,000
	24. Repair entrance and perimeter fencing	\$5,000
	Former Caretaker Residence*	
	1. Remodel building into living quarters and/or add 2-4 campsites for rentals or use by future on-site caretakers.	\$75,000 (?)
	Kitchen/Dining Hall*	
	1. Replace stoves/hood system	\$25,000
	2. Replace back and side doors	\$5,000
	3. Kitchen equipment including shelving, cupboards, and utensils	\$16,000
	4. Add a restroom facility	\$20,000
	5. Add sound deadening	\$10,000
	6. Replace motor in walk-in cooler	\$4,000
	7. Winterize washer/dryer	TBD
	8. Fix foundation	\$5,000

³ Projects denoted with an “*” are considered higher priority projects for the Ocqueoc Outdoor Center

⁴ Funding sources include MNRTF grants, Recreation Passport Grants, LWCF grants, local foundations and grant sources, donations and in-kind services.

Ocqueoc Outdoor Center, Continued:		
YEAR	PROJECT	EST. COST
	Bunkhouses	
	1. Replace lights with caged lights	\$2,000
	2. Individual shelves/storage lockers	\$16,000
	Storage Building*	
	1. Replace roof	\$25,000
	2. Address structural issues	\$25,000
	3. General restoration	\$10,000
	4. Rehabilitate hand-crafted doors	TBD

Non-Motorized Trails		
YEAR	PROJECT	Estimated Cost and Anticipated Funding Source
	<ol style="list-style-type: none"> 1. Development of trail on Rogers City Spur or similar route connecting NEST to Rogers City 2. Development of trail connecting Onaway to Onaway State Park and Black Mountain Recreation Area 3. Development of trail or bike lane connecting Millersburg Historic Depot to Ocqueoc Falls Park. 4. Trailhead facility in Village of Posen (restrooms, parking, bathrooms, pavilion) 5. Trailhead facility in Onaway (restrooms, parking, bathrooms, pavilion) 6. North Eastern State Trail – trailside amenities including signs, benches, overlooks – at scenic locations outside of communities. 7. Trail loop and birding overlook of Duck Lake (in Posen and/or Krakow Township) 8. Bench site and interpretive sign about Big Cut in Bismark Township 9. Promotional materials 10. Trail development for horseback riders 11. Trail from US 23 to Ocqueoc Outdoor Center 12. Trail from Onaway to Allis Twp Park 13. Trail from Allis Twp Park to High Country Pathway 14. Extend Presque Isle Twp Trail to Besser Natural Area 	<p>Township funds, county funds, city funds, in-kind, MDNR, MDOT, Top of MI Trails Council</p> <p>1-14. TBD</p>

Motorized Trails		
YEAR	PROJECT	Estimated Cost and Anticipated Funding Source
	<ol style="list-style-type: none"> 1. Snowmobile trails into Posen Village 2. Work with DNR and other local agencies to open roads in State facilities to snowmobiles. 	Township funds, county funds, village funds, in-kind, MDNR, MDOT, Snowmobile Associations 1-2. TBD
New Facilities: Ocqueoc River Underground Area		
YEAR	PROJECT	Estimated Cost and Anticipated Funding Source
	<ol style="list-style-type: none"> 1. Purchase property on Silver Creek Road (see map in Basis for Action) 2. Create development/management plan 3. Develop boardwalk 4. Signage 5. Develop parking area 6. Develop trails on the property 7. Construct interpretive/nature center with restrooms 8. Work with DNR to re-open access on Silver Creek Rd to Ocqueoc River 9. Maintain wetter areas for trails 10. Connect Ocqueoc Falls, the “Big Pines”, and the Underground River with signage. 	County/township funds; MDNR; local grant sources 1. TBD 2. \$10,000 3. TBD 4. \$4,000 5. \$25,000 6. TBD 7. TBD 8. TBD 9. TBD 10. \$6,000

GENERAL BASIS FOR ACTION

There are a number of issues pertinent to recreation planning in the County:

1. The area has a significant older population. Individuals 60 years of age and older make up over 34% of the population of Presque Isle County, nearly double that of the state average of 19%. The majority of in-migration is also due to relocation of persons aged 60 or older. Therefore, thought must be given to planning for this large population group which has both the time and desire for age-appropriate recreational activities.
2. One-third of the population of Presque Isle County is under the age of 35. Due to its rural nature, the county offers little in the way of commercial recreation for young people. An abundance of active recreational activities is needed.
3. Presque Isle County's median household income is \$37,383 compared to that of the state average of \$45,413. Accordingly, to truly be accessible, recreation must also be affordable.
4. Natural beauty and history abounds in Presque Isle County. It is important to those planning for its growth and development that every effort be made to balance ecological concerns with tourism potential. Protection of natural resources and scenic areas must therefore be a major element of the planning process.
5. The issue of improving the local economy by establishing the area as a premier recreation destination is of utmost importance. Loss of industrial jobs and closing of businesses have forced communities to take a new look at employment and the future of jobs in northeast Michigan. The County sees an opportunity to re-make itself into a premier tourism destination by capitalizing on its location on Lake Huron. The attraction of visitors to coastal recreational amenities has the potential to create not only direct tourism related jobs, but also to increase sales at local establishments which serve those visitors (i.e. local motels, cottage rentals, watercraft rentals, restaurants, resorts, grocery stores, gas stations, etc.). In addition, the City strives to create a community with a defined sense of place and a high livability/quality of life factor which will attract young families who have the option of work mobility (telecommuters) or who have the potential to be entrepreneurs. This livability/quality of life factor will also help to retain local youth who otherwise would leave the area upon reaching adulthood. The retention of youth and the attraction of visitors are two methods with which the County hopes to begin the much needed economic turn-around.

With these issues in mind, other factors to be considered in recreational planning for the County include:

1. Development of recreation opportunities which are appropriate to the areas major population groups. Both active and passive recreation opportunities require easy access to allow use by those with limited transportation and resources, including the elderly and youth of the area.
2. Development and maintenance of recreational opportunities for people with diverse incomes, including recreation available at a no-cost or low-cost basis, as well as appealing to upscale, urban visitors.
3. Maintenance and operation of existing and new recreational facilities in a manner which preserve their ecological and scenic value, with limited staff.

BASIS FOR CAPITAL IMPROVEMENTS

The following goals, objectives, and actions were developed directly from the input received at the public input sessions conducted as part of the 2012 Recreation Plan, as well as from current input received from the County Planning Commission, volunteer groups, and the online recreation survey.

40 Mile Point Lighthouse/Glawe School

GOAL: Presque Isle County Board of Commissioners and 40 Mile Point Lighthouse Society are committed to the historically-correct restoration and continued operation of this site as a key recreation and tourism site in Presque Isle County and Northeast Michigan Region.

Objective 1: Restoration of the lighthouse

Action 1: Renovate keeper's house for museum

Action 2: Expand museum

Action 3: Convert current caretaker residence to museum

Objective 2: Maintain operations

Action 1: 40 Mile Point Lighthouse Society to maintain operations

Objective 3: Provide disabled visitors with a lighthouse experience

Action 1: Video kiosk

Action 2: Handicap accessible entrance to outdoor restroom

Action 3: ADA accessible path to beach and shipwreck

Action 4: Golf cart/transport vehicle

Objective 4: Move caretaker out of museum

Action 1: Construct caretaker residence

Objective 5: Provide historic and natural resource information

Action 1: New signage

Objective 6: Provide visitor experience

Action 1: Expand events

Action 2: Expand marketing

Basis for Action: In order to expand the historic exhibits at the lighthouse, it is necessary to construct new quarters for the keeper and expand the museum into the current keeper's quarters. Also, due to

historic restrictions, the lighthouse cannot be made completely ADA-accessible. Therefore, the Lighthouse Society would like to provide a unique experience to disabled visitors by allowing them to view the interior of the lighthouse on a screen at a kiosk. In addition, the construction of an ADA-accessible ramp to the beach would allow disabled visitors to not only access the beach but also to view the shipwreck which is located on the beach. In northeast Michigan, over 38% of residents are classified as having some type of disability. In addition, National Scenic Byways has reported that people interested in visiting historic sites make up 20% of travelers on scenic byways/heritage routes and they are, on average, 51 years of age. These facts, along with the high number of older resident visitors, make disabled access a priority.

The 40 Mile Point Lighthouse is a popular tourism draw for the area and needs to be maintained. The Michigan Economic Development Corporation reports that over 13% of visitors that visit coastal northeast Michigan stop at an historic site.

Ocqueoc Outdoor Recreation Center

GOAL: To provide a unique gathering place in a relaxed, natural environment for educational, recreational, and social activities. The preservation and improvement of this site is important not only for the operation of an outdoor recreational facility, but because of its historical significance as a former CCC camp.

Objective 1: Have the Center function seasonally from May through October.

Action 1: Add supplemental heating /cooling in all buildings

Action 2: Weatherproof buildings

Objective 2: Renovate the former caretaker residence into a proper living space with option of renting it out or providing it for use by future on-site caretakers.

Action 1: Rent to camp to tourists or caretakers on a weekly/monthly basis

Action 2: Remodel residence into living quarters

Action 3: Add 2-4 campsites for the same purpose

Objective 3: Create a "Heritage Center" museum emphasizing the New Deal CCC Era in the County.

Action 1: Evaluate scope of work needed to upgrade the log cabin building into a museum

Action 2: Eliminate pests (bats and insect damage to the wood logs) in the log cabin building

Action 3: Create exhibits and signage

Objective 4: Continue to provide an educational facility for youth.

Action 1: Host training programs for children in area schools

Action 2: Advertise the availability of the Center's facilities

Action 3: Work with youth groups and other volunteers to provide new equipment/facilities needed to enhance educational programming at the Center

Objective 5: Provide an upgraded facility in order to expand possible uses.

Action 1: Develop a check in and check out list (someone would have to be there for check in and check out for each group)

Action 2: Schedule a work bee day in May to clean up the beach and camp

Action 3: Maintain the existing two maintenance positions

Action 4: Upgrade outdoor lighting

Action 5: Open air pavilion by lakeside

Action 6: Develop 2-4 campsites with electrical and water hook-ups (pull-through sites near the woods with an area to picket horses.) This also meets *Objective 2, Action 3*.

Action 7: Maintain a trail system that ties into adjacent trail systems (for hike, bike, equestrian use)

Action 8: Upgrade building entrance ramps to meet building codes for accessibility

Action 9: Install fire/smoke alarms as needed

Action 10: Renovate staff/media/first aid building

Action 11: Camp store/info center. (?)

Action 12: Purchase recreational equipment (canoes, kayaks, paddles, life jackets)

Action 13: Upgrade wiring in all buildings as needed

Action 14: Replace stoves/hood system in kitchen

Action 15: Replace back and side doors in kitchen

Action 16: Kitchen equipment purchases including shelving and utensils

Action 17: Add a restroom in kitchen/dining hall

Action 18: Add sound deadening in kitchen/dining hall

Action 19: Replace motor in walk-in cooler

Action 20: Winterize washer/dryer

Action 21: Add storage cupboards

Action 22: Update heating/cooling in all buildings

Action 23: Install directional and interpretive signage

Action 24: New fishing platform

Objective 6: Keep maintenance up on facility.

Action 1: Maintain a list of maintenance tasks for each building

Action 2: Control pest issues

Action 3: Repair and replace sidewalks

Action 4: Inspect and replace roofs as needed

Action 5: Repair and expand entry awnings

Action 6: Repair foundation in kitchen building and other buildings as needed

Action 7: Re-build fire pit and seating by lakeside

Action 8: New windows/screens

Action 9: Replace and or repair septic tank/drain field

Action 10: Seasonal clean-up of lake & camp area

Action 11: Replace lights with caged lights in bunkhouses

Action 12: Individual shelves/storage lockers in bunkhouses

Action 13: Repair fencing at entrance and along perimeter of property

Action 14: Address structural issues, general restoration needs and rehabilitate hand-crafted doors in the Storage Building

Objective 7: Increase knowledge of facility to area residents and visitors.

Action 1: Place ads in local tourism guides

Action 2: Hold open house for public

Action 3: Direct mailings to target groups

Action 4: Continue work of the fundraising committee

Action 5: Create Heritage Center/Museum

Action 6: Install interpretive and wayfinding signage

Basis for Action: The Ocqueoc Outdoor Center is a unique recreational and historic facility which is badly in need of repairs, maintenance, and upgrades. This facility has great potential for use by school, community, and private groups. If properly upgraded, it could serve as a regional draw for locals and visitors alike. Its unique setting, its history, and its proximity to many other recreational amenities only serve to reinforce its importance to the community.

Trails

GOAL: Expand and promote the network of trail systems in the area.

Objective 1: Expand non-motorized trail network.

Action 1: Development of trail on Rogers City Spur or similar route connecting NEST to Rogers City

Action 2: Development of trail connecting Onaway to Onaway State Park and Black Mountain Recreation Area

Action 3: Development of trail or bike lane connecting Millersburg Historic Depot to Ocqueoc Falls Park.

Action 4: Trail loop and birding overlook of Loon Lake (in Posen and/or Krakow Township)

Action 5: Trail from US 23 to Ocqueoc Outdoor Center

Action 6: Trail from Onaway to Allis Twp Park

Action 7: Trail from Allis Twp Park to High Country Pathway

Action 8: Extend Presque Isle Twp Trail to Besser Natural Area

Objective 2: Expand motorized trail network.

Action 1: Plan for snowmobile trails into Posen for access to businesses.

Action 2: Work with DNR and other local agencies to open up new areas to snowmobilers

Objective 3: Provide trail amenities for trail users

Action 1: Trailhead facility in Village of Posen (restrooms, parking, bathrooms, pavilion)

Action 2: Trailhead facility in Onaway (restrooms, parking, bathrooms, pavilion)

Action 3: North Eastern State Trail – trailside amenities including signs, benches, overlooks – at scenic locations outside of communities.

Action 4: Bench site and interpretive sign about Big Cut in Bismark Township

Objective 4: Expand knowledge of area trail systems

Action 1: Develop promotional materials

Action 2: Continue to support US 23 Heritage Route efforts

Action 3: Support other regional marketing efforts

Basis for Action: Trails and ecotourism in Presque Isle County rival those in any other part of the country. There are over 700 miles of nonmotorized trails in Presque Isle, Alpena, and Alcona counties alone as well as over 250 “greenway” attractions. This area has a huge potential for visitor development

due to its natural resources. Due to the economic struggles of the area (with an unemployment rate above 12% and in recent years as high as 18%) tourism development is greatly needed.

Snowmobiling in Presque Isle is a popular winter recreational activity and is important to the local economy. While the trail system is extensive through the west and central portions of the County, there is no connection into Rogers City or the east side of the County. Discussions are ongoing to open the “Posen spur” of the Alpena to Mackinaw City Rail-to-Trail facility. The MDNR and the Presque Isle Sno-Trails Club are instrumental in these actions. The Sno-Trails Club is also working to identify a trail north from Rogers City connecting to the Silver Creek Trail near the mouth of the Ocqueoc River. This *Recreation Plan* supports expansion and linkage of the snowmobile system in Presque Isle County. These trails are not only used for wintertime snowmobiling, but are available year-round for multiple uses.

This *Recreation Plan* supports the concept of a ten-mile trail system that would connect the Rogers City trail system to the Presque Isle Township trail system. The opening of the “Posen spur” would achieve half this goal. The remaining seven miles from Swan River to Old State Road in Thompson’s Harbor State Park would need to be constructed, as well as a two mile connector from Thompson’s Harbor State Park to the existing trail on Grand Lake Road.

In summary, this *Recreation Plan* supports the goal of multi-purpose trail expansion and linkage throughout Presque Isle County.

Ocqueoc Area/Underground River

GOAL: Provide public access to the Underground River Area

Objective 1: Provide access to the public to the underground river area

Action 1: Purchase property on Silver Creek Road (see map in Basis for Action)

Action 2: Create development/management plan

Action 3: Develop parking area

Action 4: Work with DNR to re-open access on Silver Creek Rd to Ocqueoc River

Objective 2: Implement site improvements to enhance use of site

Action 1: Develop boardwalk

Action 2: Signage

Action 3: Develop trails on the property

Action 4: Construct interpretive/nature center with restrooms

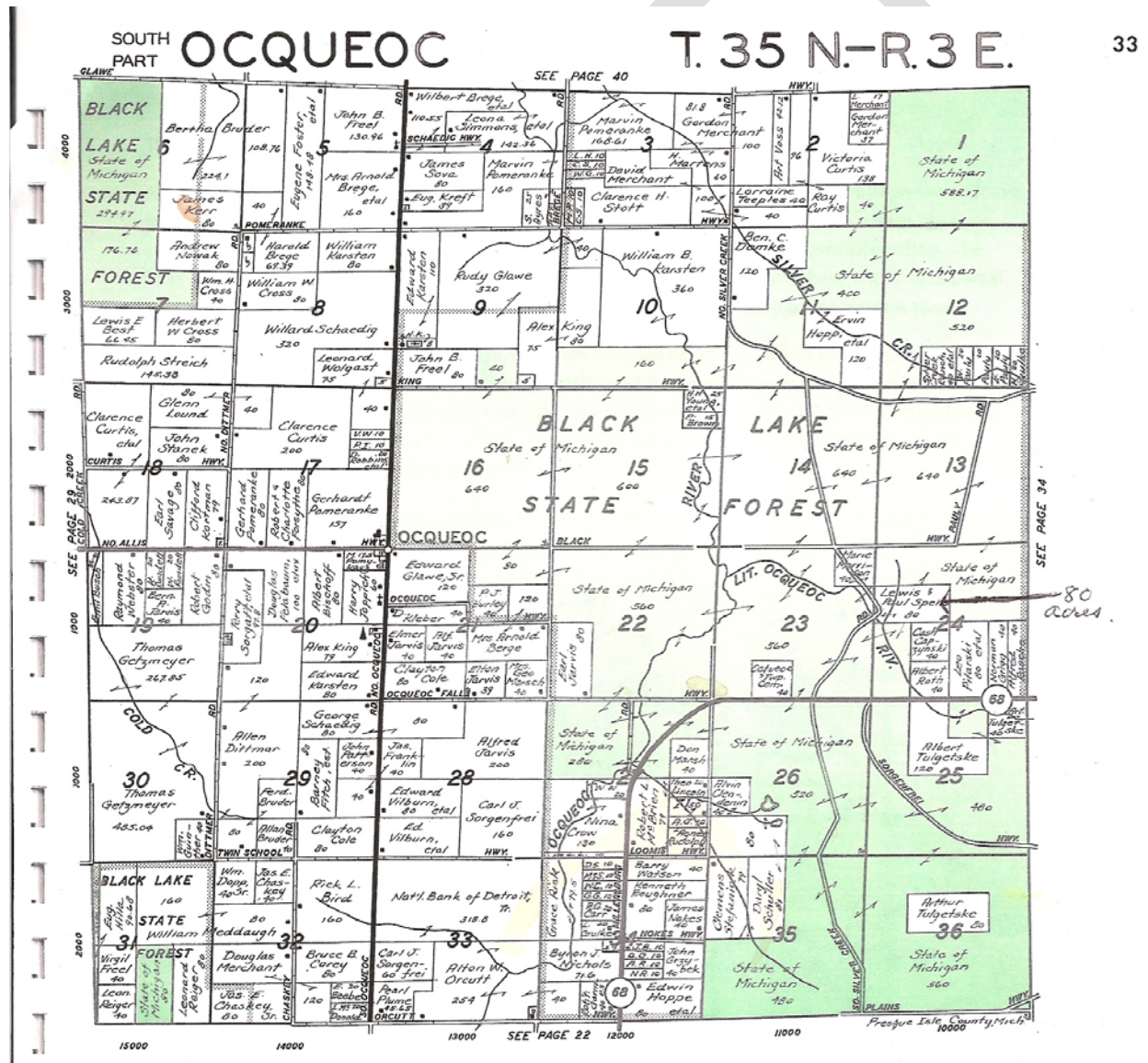
Action 5: Maintain wetter areas for trails

Action 6: Connect Ocqueoc Falls, the “Big Pines”, and the Underground River with signage.

Basis for Action: Members of the public feel that this is an attraction that should be open to the public in order to show the karst topography of the area. The DNR owns a small parcel of land on the west side of Silver Creek Road where the river comes out from under a hill. The east side is currently private property and is an interesting example of Karst. The river goes underground and reappears in several places (**Figures 5-1 and 5-2**).

Once the land is purchased, a management/development plan would be written to protect and preserve the river while making it accessible to the public. Development would include protecting the river with trails and boardwalks. Trails could also meander throughout the 80 acres for hikers, mountain bikers, and for skiers and snowshoers in the winter. Interpretive signage would give information about the Karst geology that defines this part of the river. A nature center would provide a learning opportunity for area youth, visitors, and nature aficionados alike.

Figure 5-1: Plat map showing parcel with underground river



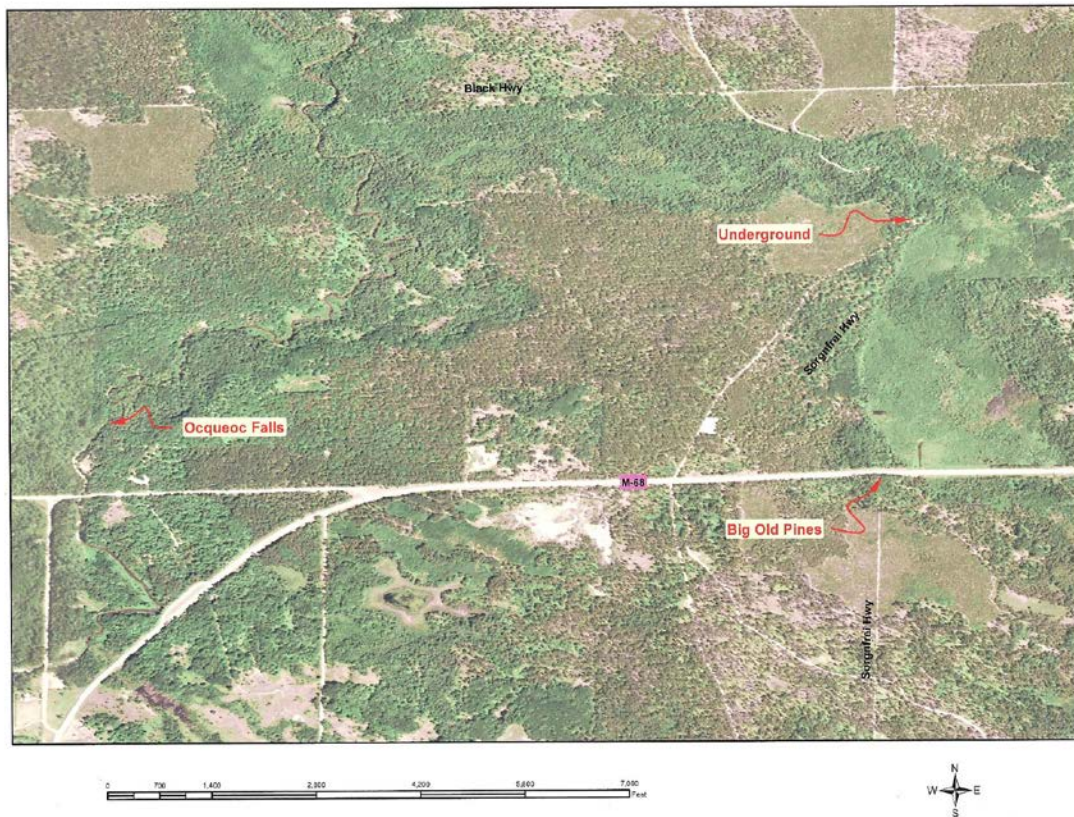


Figure 5-2: Aerial photo showing underground river area

US 23 Heritage Route

Following are the goals and objectives which are part of the *2015-2019 US 23 Corridor Management Plan*. Presque Isle County fully supports the goals of the US 23 Heritage Route Management Council and Presque Isle County Team. Please refer to that plan for detailed strategies for each objective.

Goal for Attractions: Encourage the preservation, maintenance, improvement and expansion of natural, recreational, historical and cultural attractions along the US 23 Heritage Route.

Objective 1: Work with local communities to preserve, maintain, improve and expand attractions along the route.

Goal for Highway Safety & Multimodal Transportation: Ensure that the US 23 Heritage Route remains safe and inviting for all modes of transportation.

Objective 1: Ensure that US 23 is an enjoyable driving experience for the automobile traveler.

Objective 2: Ensure that alternative forms of transportation are available along US 23.

Goal for Community Development: Encourage the communities along the US 23 Heritage Route to continue to improve their attractiveness.

Objective 1: Work with local communities to improve gateways, reduce blight, and investigate local mechanisms to implement improvements.

Goal for Forests, Open Space & Scenic Views: Encourage the preservation and enjoyment of the forests, open spaces and scenic views along the US 23 Heritage Route.

Objective 1: Protect and preserve forests, open spaces and scenic views along the route.

Objective 2: Facilitate the public's enjoyment of forests, open spaces and scenic views along the route.

Goal for The Environment: Encourage the preservation of the natural environment along the US 23 Heritage Route, including: air, water, native vegetation, wildlife and wildlife habitat.

Objective 1: Ensure US 23 is a clean and beautiful highway.

Objective 2: Protect environmentally sensitive areas along the corridor.

Objective 3: Preserve and protect the native vegetation along the Route.

Objective 4: Protect wildlife and wildlife corridors along the Route.

Objective 5: Support educational activities on the natural environment that target both landowners and visitors.

Objective 6: Ensure good air quality in the coastal region.

Goal for Merchandising: Develop logo products to promote the route and provide income to the program.

Objective 1: Offer products for sale online and in local establishments.

Goal for Sponsorships: Utilize sponsorships to increase exposure to heritage sites and to generate revenue.

Objective 1: Implement Heritage Route Business Sponsorship and Corporate Sponsorship program.

Goal for Michigan Byways Program: Participate in the Michigan Byway Program to offer visitors unique corridor destinations in Michigan.

Objective 1: Work with MDOT to develop and maintain a comprehensive Statewide Michigan Byway program.

Goal for Events: Ensure the US 23 Heritage Route has a visible presence in events along the corridor.

Objective 1: Promote and take part in events along the corridor.

Goal for Outreach: Increase public awareness of the US 23 Heritage Route among the local communities and engage local organizations, businesses, youth and other stakeholders in the program.

Objective 1: Utilize successful and adaptive public outreach methods to keep the program “fresh” in the eyes of the local communities and to engage local stakeholder groups to participate in all strategies contained within this plan.

Goal for Branding: Establish a well-recognized brand for the route and coastal area.

Objective 1: Ensure that the brand of the program is established and protected.

Goal for Finances: Develop a program income to implement the Corridor Management Plan.

Objective 1: Generate program income sufficient to provide full-time staffing and financial resources to implement other strategies of the Corridor Management Plan.

Goal for Services: Encourage tourism related public sector attractions and private sector businesses to provide quality services to Heritage Route travelers.

Objective 1: Provide service support to private and public sector attractions.

Goal for Product Development: Provide visitors with quality information, guiding, and wayfinding along the US 23 Heritage Route.

Objective 1: Develop interpretive information for the US 23 Heritage Route.

Objective 2: Continue the “Stories of the Sunrise Coast”.

Objective 3: Develop guided and self-guided tours.

Objective 4: Develop site signage and wayfinding signage along the US 23 Heritage Route.

Objective 5: Provide visitor information in a variety of formats.

Objective 6: Manage visitors, energy, products and safety in a responsible manner.

Objective 7: Ensure visitor information is readily available across the State and along the Route.

Goal for the Website: Maintain and improve the US 23 Heritage Route website.

Objective 1: Ensure that the US 23 website meets the needs of the US 23 program and visitors.

Goal for Advertising: Engage in an advertising campaign in order to increase visitor awareness of the US 23 Heritage Route.

Objective 1: Advertise to Target Markets.

Objective 2: Engage in Cooperative Advertising.

Objective 3: Advertise in print publications.

Objective 4: Advertise on the ground.

Objective 5: Advertise with television and radio using Pure Michigan.

Objective 6: Issue media releases to travel and tourism journalists.

Objective 7: Engage in Familiarization (FAM) tours to enable trade and media contacts and partners to experience the US 23 Heritage Route first-hand.

Objective 8: Develop a PR Kit for the US 23 Heritage Route.

Objective 9: Ensure the US 23 Heritage Route is represented at Trade and Consumer Shows.

Objective 10: Engage in Direct Marketing, including mail and e-mail.

Objective 11: Advertise on the Internet to reach target markets.

Objective 12: Engage in effective social media to increase brand awareness.

Objective 13: Use other online tools to increase brand awareness.

US 23 Heritage Route Projects Specifically for the Presque Isle County Team

1. Support the development of a connection and “gateway” from US-23 to:
 - a. The Ocqueoc “Chain of Lakes” water trail
 - b. The Black Mountain/ Black Lake State Park area
 - c. The Presque Isle State Harbor area
 - d. The Posen agribusiness area
2. Support the extension of the non-motorized pathway from Presque Isle Harbor to connect with Alpena. Support trail from Presque Isle to Rockport via the Negwegon, Rockport and Thompson’s Harbor (NRTH) Committee.
3. Support the development of a nature and geological features trail through the Presque Isle/Alpena County karst areas.
4. Grand Lake Township Park expansion and improvements.

Depression Era Sites

Presque Isle County is blessed with several sites where CCC and WPA construction activities occurred and now the County is the owner of the premier site, Ocqueoc Outdoor Recreation Center, formerly “Black Lake CCC Camp”. This *Recreation Plan* supports identification and promotion of these sites in promotional literature.