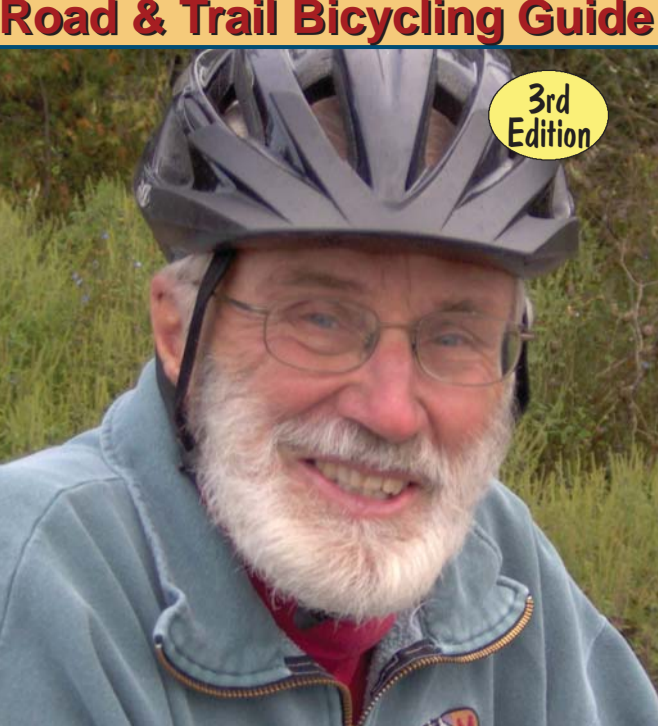


# Northeast Region

## Road & Trail Bicycling Guide

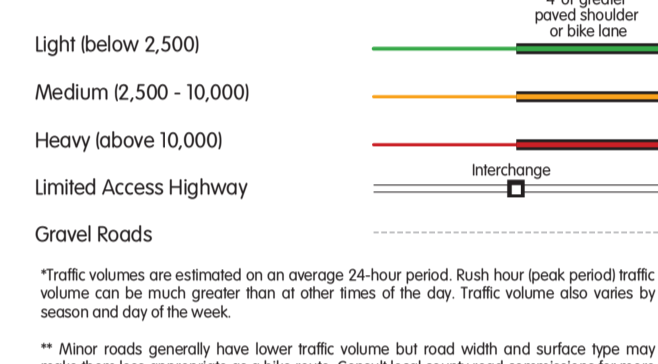


**ALCONA - ALPENA - CHEBOYGAN CRAWFORD - IOSCO - MONTMORENCY OGEMAW - OSCODA - OTSEGO PRESQUE ISLE - ROSCOMMON COUNTIES**

**\$5.00 VALUE**



### ROAD NETWORK



### TRAILS

- Improved Shared Use Regional Path
- Unimproved Shared Use Regional Path
- Multi-Use Local Path
- Foot Trail

### RECREATIONAL FACILITIES

- Park/Public Recreation Area
- Hiking Trail
- Bike Trail
- Ski Trail
- Snowmobile Trail
- Horseback Riding Trail

### POINTS OF INTEREST

- Trail Head
- Summit
- Wildlife Viewing/Game Preserve
- Medical Facility
- MDOT Carpool Lot
- Marina/Harbor
- Shipwreck
- Lighthouse
- Ferry Service
- Other Points of Interest

### SERVICES

- CITY/VILLAGE NAME
- Full Service (food, restaurants, and lodging)
- City/Village Name
- Some Services (restaurants, food)

### LAND USE

- Lakes
- Antiquity Range (Camp Grayling)
- Rivers
- County Lines
- Cities/Villages
- Huron National Forest
- State Forest/State Park/State Protected Land
- State Military Land
- Nature Preserves

### TOURISM RESOURCES

- Tavel Michigan
- Heritage Route 23
- Alcona County Chamber
- Alpena Area CVB
- Atlanta Area Chamber of Commerce
- Cheboygan Area Chamber of Commerce
- Gaylord Area Convention & Tourism Bureau
- Gaylord Area Visitors Bureau
- Higgins Lake - Roscommon Chamber
- Hillman Area Chamber of Commerce
- Houghton Lake Area Tourism & Conv. Bur.
- Indian River Chamber of Commerce
- Indian River Tourist Bureau
- Mackinaw Area Visitors Bureau
- Mackinaw City Chamber of Commerce
- Oscoda CVB
- Presque Isle County Visitor Information Services
- Tawas Bay Tourist & Convention Bureau
- Tawas Area Chamber of Commerce
- West Branch Travelers & Visitors Bureau

**Map Information**

Map produced by: Northeast Michigan Council of Governments

With funding from: Michigan Department of Transportation

MDOT: Intermodal Policy Division

This map is made possible through the Federal Highway Administration and funded with Federal Highway funding. 50,000 copies printed at a cost of \$13,622 or \$0.27 per copy.

Copyright: State of Michigan, 2013. All Rights Reserved.

**Mackinaw City**

Scale: 1" = 3/4 Mile

Trails shown: North Central State Trail, North Western State Trail, North Eastern State Trail, North State Trail.

**Cheboygan**

Scale: 1" = 3/4 Mile

Trails shown: North Central State Trail, North Eastern State Trail.

**Rogers City to 40 Mile Point**

Scale: 1" = 1 Mile

Trails shown: Huron Sunrise Trail.

**Alpena**

Scale: 1" = 1/2 Mile

Trails shown: Alpena Bi-Path, North Eastern State Trail.

### Bicycle Resources

**Michigan Department of Natural Resources**  
MDNR promotes the development of trail systems throughout the state. They work with local agencies in trail development, planning and design, and administer a number of funding programs.  
[www.michigan.gov/dnr](http://www.michigan.gov/dnr)

**Michigan Mountain Biking Association**  
MIMBA promotes responsible mountain biking and works toward the goal of common land access and natural resource protection through interaction with policy makers, the cycling industry, race promoters, mountain bikers and other trail users.  
[www.mimba.org](http://www.mimba.org)

**League of Michigan Bicyclists**  
LMB's mission is to make Michigan a more bicycle-friendly state by promoting favorable recognition of bicycling; improved facilities, tours and events; partnerships with related groups; pro-bicycling legislation, regulation and implementation; and the education of stakeholders.  
[www.lmb.org](http://www.lmb.org)

**Thunder Bay Trails Association**  
The mission of the TBTA is to promote and protect motorized trail systems in Alpena County and adjoining areas and reflect their recreational significance for enjoyment, education and adventure to area citizens.  
[www.thunderbaytrails.org](http://www.thunderbaytrails.org)

**Top of Michigan Trails Council**  
The mission of the Trails Council is to advocate and facilitate the development of a network of multi-purpose trails in Northern Lower Michigan.  
[www.trailsouncil.org](http://www.trailsouncil.org)

**Rails to Trails Conservancy**  
RTC works with local recreation and conservation agencies to preserve rail corridors for recreation and recreational uses. This organization promotes the conversion of abandoned railroad rights-of-way to recreational trails through public education, advocacy, and technical assistance to grassroots organizations.  
[www.railtrails.org](http://www.railtrails.org)

**Michigan Trails and Greenways Alliance**  
MTGA fosters and facilitates the creation of an interconnected statewide system of trails and greenways for recreation, health, transportation, economic development and environmental and cultural preservation purposes.  
[www.michigantrails.org](http://www.michigantrails.org)

**Michigan Department of Transportation**  
The Michigan Department of Transportation provides bicycle maps as well as bicycling guidance.  
[www.michigan.gov/mdot-biking](http://www.michigan.gov/mdot-biking)



**Map of Michigan Counties**

**SIDE 1** (Northwest of Alpena): Mackinaw City, Cheboygan, Presque Isle, Gaylord, Alpena.

**SIDE 2** (Southwest of Alpena): Alpena, Roscommon, Ogemaw, Isosco, Montmorency, Alpena, Cheboygan, Mackinaw City.

**Gaylord**

Scale: 1" = 3/4 Mile

Trails shown: North Central State Trail, Gaylord Community Pathway.

**Before You Use This Map**

This map has been developed by the Northeast Michigan Council of Governments as an aid to bicyclists and is not intended to be a substitute for a person's use of reasonable care. The user of this map bears full responsibility for his or her own safety. NEMCOG makes no express or implied guarantee as to the safety or condition of the roads and paths shown and has no responsibility for maintaining them. Conditions indicated on the map are subject to change. Be prepared to make your own assessment of traffic, roads, and trail plan routes appropriate to your riding skills.

All public and private entities and persons involved in the creation of this map disclaim responsibility and shall not be answerable or held accountable in any manner for loss, damage, or injury that may be suffered as the result of the use of this map.

**Where to Bike**

**On the Road**  
Bicycles are permitted on all Michigan highways and roads, EXCEPT limited access freeways or unless otherwise posted. Bicycles are allowed on all road systems including those in State Forests, State Parks, and National Forests.

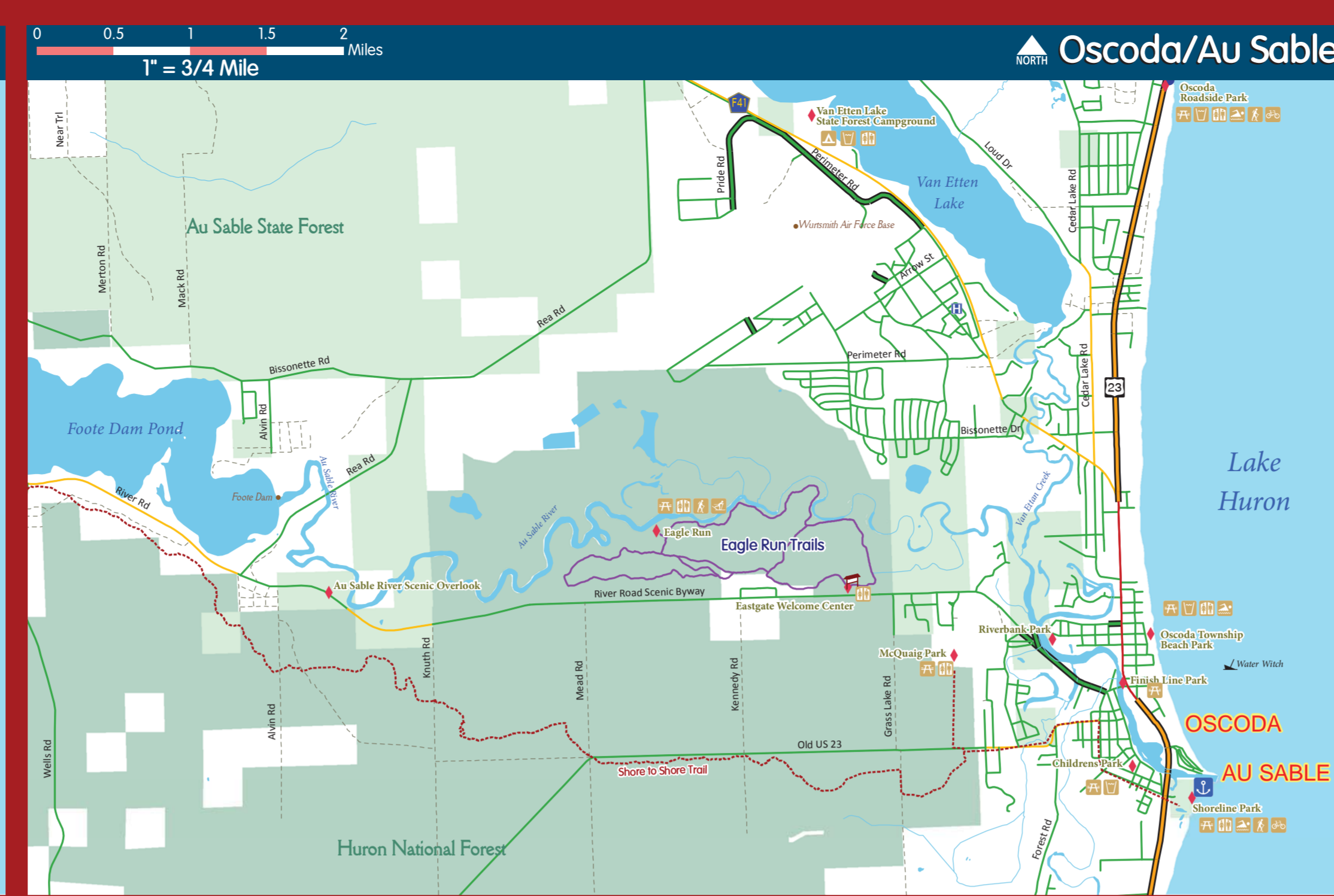
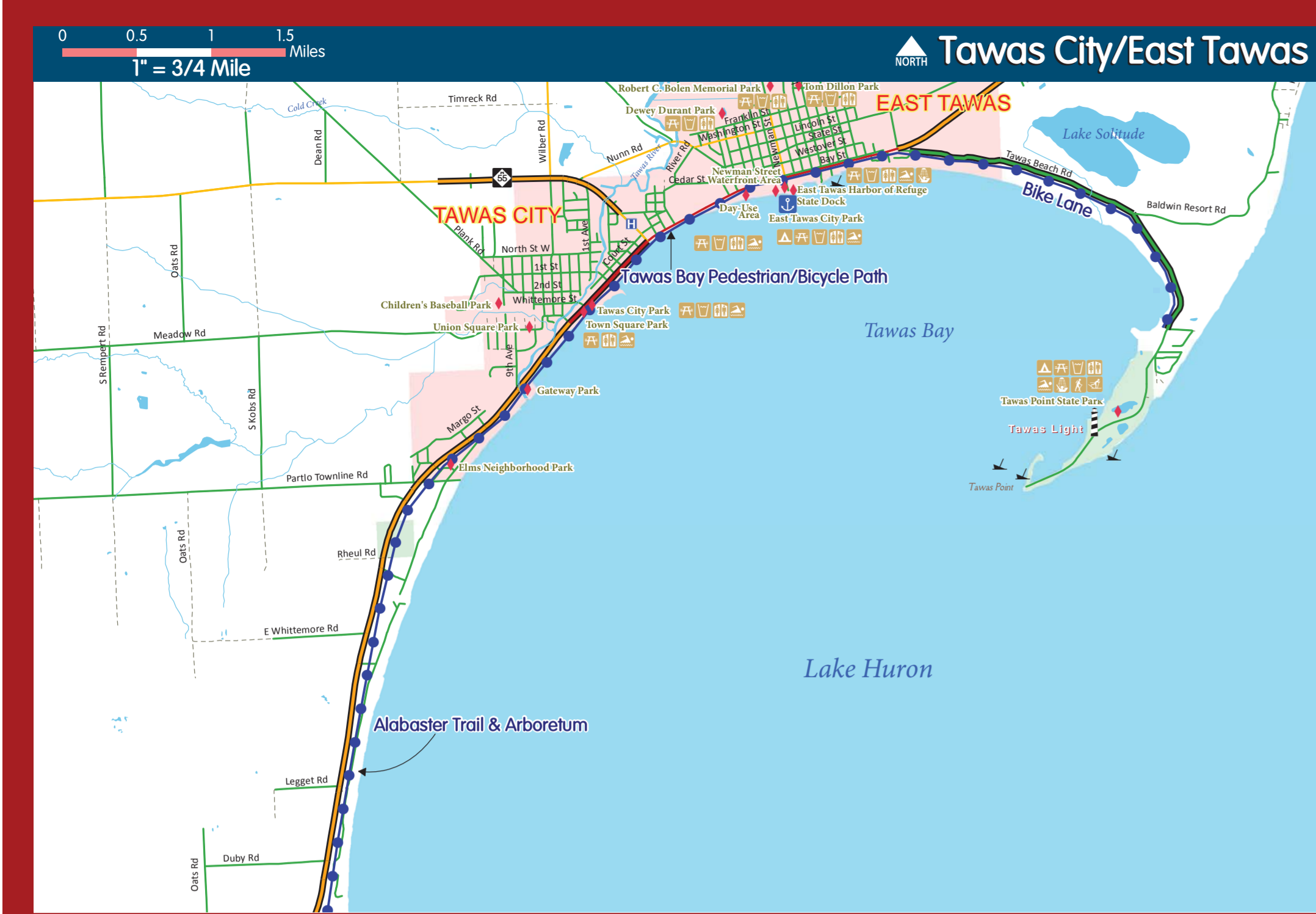
**State Park Trails**  
Bicycles are allowed on specified trails in State Parks. Call the individual park or the Michigan Department of Natural Resources for maps of trails and further information.  
[www.michigan.gov/dnr](http://www.michigan.gov/dnr)

**State Forest Trails**  
Bicycles are allowed on most State Forest trails. For more information and a map, contact the Michigan Department of Natural Resources.  
[www.michigan.gov/dnr](http://www.michigan.gov/dnr)

**National Forest Trails**  
Bicycles are allowed on National Forest trails except where posted. Trails in the Huron National Forest open to foot traffic only include the Hot Lake Foot Trails, Red Lake Foot Trail Area, and Conair Trails. Contact the Huron National Forest (800) 421-6263.  
[www.fs.fed.us/r18/nhmf](http://www.fs.fed.us/r18/nhmf)

**Local Trails**  
Many local communities have developed their own trail systems. Rules and regulations vary by each community and trail.

**Huron Greenways & Blueways Trail Designation**  
The Huron Greenways system is a collection of existing land and water trails and routes linking public lands found in the coastal portions of Alpena, Cheboygan, Isosco and Presque Isle Counties. Visit [www.heritage23.com](http://www.heritage23.com) for more information and to access interactive trail maps.



Trail System	Trailhead Access
Alpena City Bi-Path	Alpena City Parks (Alpena Co)
Black Mountain Trails	Co Rd 489; Doriva Beach Rd; Black Mountain Rd; Twin Lakes Rd; Trailheads are approx 20 mi NW of Rogers City and 11 mi SE of Cheboygan (Presque Isle Co and Cheboygan Co)
Battles Road Pathway	Battles Rd (2.5 miles north of Lewiston and 3 miles south of M-32 (Montmorency Co)
Chippewa Hills Pathway	Kissau Rd south off Nicholson Hills Rd 14 miles SE of Alpena (Alpena Co)
Clear Lake - Jackson Lake Pathway	Clear Lake State Park and Jackson Lake SF Campground 10 mi N of Atlanta (Montmorency Co)
Green Timbers	Fontinalis Rd; Bush Rd; 3 miles NW of Vanderbilt (Otsego Co)
High Country Pathway	Co Rd 622; Shoepack Lake Rd (spans Cheboygan Co, Presque Isle Co, Otsego Co, and Montmorency Co)
Highbanks Trail	Lumberman's Monument on the Au Sable River (Iosco Co)
Huron Sunrise Trail	County Park Rd; Hoeff State Park; Herman Vogler Conservation Area; Rogers City Parks (Presque Isle Co)
Lost Tamarack Pathway	Weber Lake Rd; 5 mi NW of Wolverine (Cheboygan Co)
North Central State Trail	Mackinaw Crossings; Western & Taylor Streets in Cheboygan; Off M-27 in Indian Rivers; off Ballard St in Waverline; Main St in Vanderbilt; Fairview St in Grayford (Otsego Co & Cheboygan Co)
North Eastern State Trail	Woodward Ave in Alpena; M-65 in Posen; Co Rd 638 in Millersburg; M-211 in Onway; Aloha State Park Day Use Area; Western & Taylor Streets in Cheboygan (Alpena Co, Cheboygan Co, & Presque Isle Co)
Norway Ridge Pathway	Werth Rd; 3.5 mi SW of Alpena (Alpena Co)
Ocqueoc Falls Bicentennial Pathway	Ocqueoc Falls Rd off M-68; 10 mi W of Rogers City (Presque Isle Co)
Ogemaw Hills Pathway	Fairview Rd; 4.5 mi N of West Branch (Ogemaw Co)
Pine Baron Pathway	Lone Pine Rd; 2 mi W of Grayford (Otsego Co)
Rifle River Recreation Area	F-28; 4 mi E of Rose City (Ogemaw Co)
Shingle Mill Pathway	Sturgeon Valley Rd (9 mi E of Vanderbilt (Otsego Co)
Sinkhole Pathway	Shoepack Lake Rd; 8 mi S of Onaway (Presque Isle Co)
Tisdale Triangle	M-18 to Tisdale Rd; outside Roscommon (Roscommon Co)
Wakely Lake	M-72; 10 mi E of Grayling (Crawford Co)
Wildwood Hills	Wildwood Rd 6.5 mi NW of Wolverine (Cheboygan Co)

### Bicycle Safety

**Be predictable and act like a vehicle**  
Bicyclists on public roadways have the same rights and responsibilities as automobile drivers and are subject to the same state laws and ordinances.

**Always wear an approved helmet**  
Always have your helmet fitted and adjusted properly. Helmets should fit snugly so that they do not move around while riding.

**Ride with traffic**  
Motorists are not looking for bicyclists riding on the wrong side of the road. State law requires that cyclists ride with the flow of traffic, no more than two abreast.

**Use hand signals**  
Hand signals tell pedestrians and motorists what you intend to do. It is state law that you use hand signals.

**Watch for cars pulling out**  
Always assume that motorists do not see you. Make eye contact with the driver to assess your safety before proceeding in front of a vehicle.

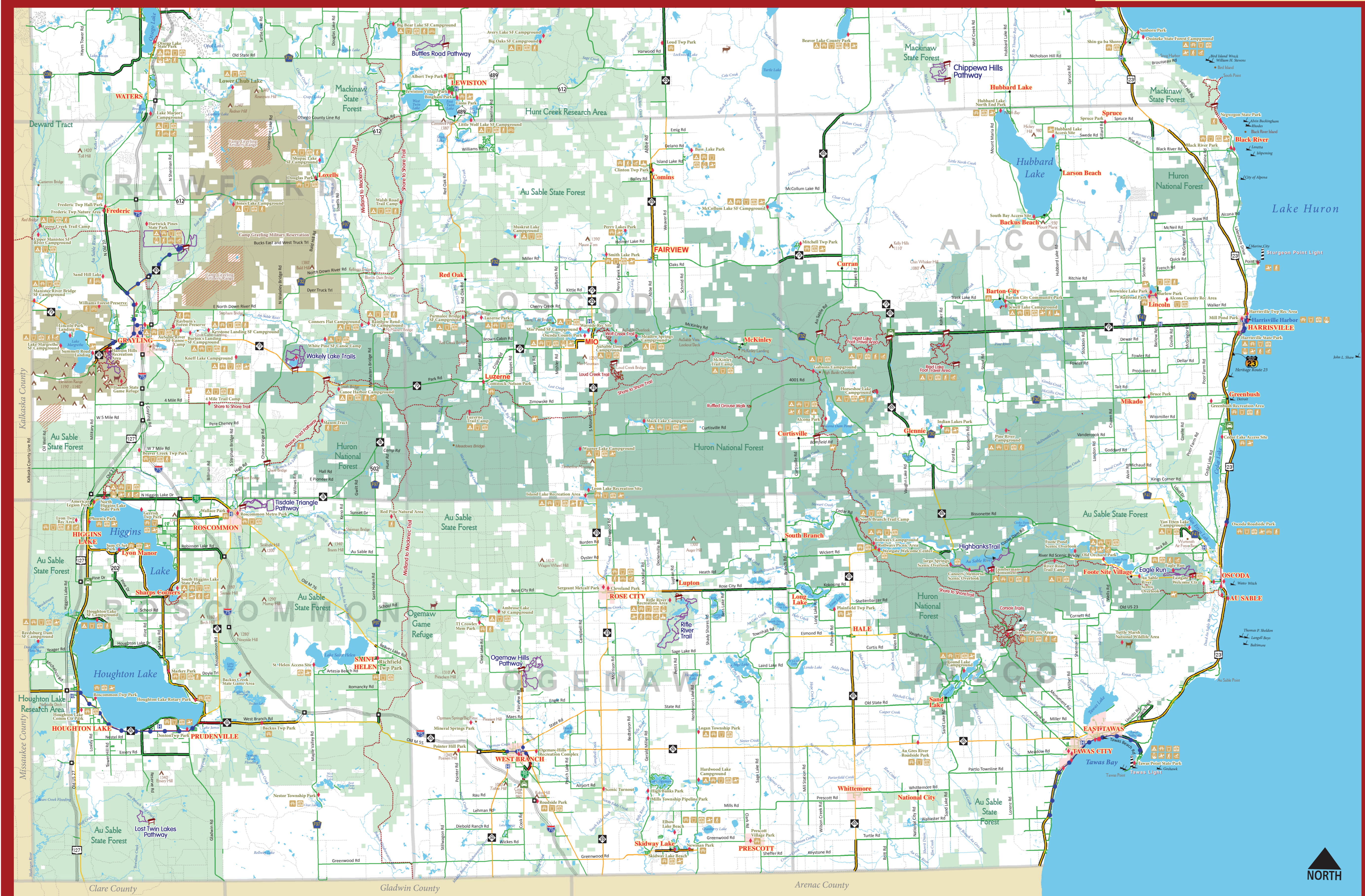
**Wear appropriate clothing**  
Wear light, bright and/or reflective clothing at all times to improve your visibility. Dress in layers and bring gear for unforeseen changes in the weather.

**Use lights at night**  
State law requires a front white light visible for 500 ft and a red reflector visible for 600 ft at night. More reflectors and stronger lights make you more visible.

**Be courteous and respectful on trails**  
Show courtesy to all trail users. Adhere to trail hours and restrictions. Respect rights of property owners.

**Always yield to other, slower trail users**  
Slow down and use caution when approaching other trail users. When overtaking, announce your intent by voice or ringing your bell.

**Ride as far to the right as practical**  
Form a single file line when other users are present. Slower trail users should stay to the right.



**SIDE 1**  
Cheboygan County, Presque Isle County, Emmet County, Charlevoix County, Antrim County, Otsego County, Montmorency County, Alpena County, Kalkaska County, Grayling, Crawford County, Oscoda County, Alcona County, Roscommon County, Ogemaw County, Iosco County, Oscoda/Au Sable, Tawas City/East Tawas, Clare County, Gladwin County, Arenac County.

**SIDE 2**

**SIDE 2 INSETS**

- Ngwegon State Park
- On-Road Biking
- Downtown Alpena

