

Chapter 5 - Community Services & Facilities

Overview

Similar to many northern Michigan communities, Montmorency County is primarily a rural community with relatively low population density. This development pattern presents significant challenges in providing facilities and services to the residents of the County. **Figure 5.1** shows the existing types and locations of public and private infrastructure currently in the county.

County Government

The Montmorency County Board of Commissioners meets at 10:00 AM on the second and fourth Wednesday of each month, unless posted otherwise, at the Judicial Annex, in the Commissioners' Room, P.O. Box 789, Atlanta, MI 49709. The County is represented by Five Commissioners.

District	Commissioner	Address	Telephone
1	Albert LaFleeche	19030 County Rd. 451, Hillman	(989) 742-4196
2	Brock Baggett, Chair	9356 Co. Rd. 489, Atlanta	(989) 448-9005
3	Daryl Peterson	PO Box 54, Hillman	(989) 742-3145
4	Margaret D'Agostino	2065 Co Rd. 489 S., Lewiston	(989) 786-8018
5	Stacy Carroll		

County Officials

County Clerk	Cheryl Neilsen	PO Box 789, Atlanta	(989) 785-8022
Treasurer	Karen Tyler	PO Box 789, Atlanta	(989) 785-8086
Register of Deeds	Teresa Walker	PO Box 789, Atlanta	(989) 785-8079
Sheriff	Don Edwards	11045 M-32 W. Atlanta	(989) 785-4238
Prosecuting Atty.	Terrie Conklin-Case	PO Box 789, Atlanta	(989) 785-8070
Friend of the Court	Jean Klein, Sec.	PO Box 479, Atlanta	(989) 785-8053
26th Circuit Ct. Judge	Michael Mack	720 W. Chisholm St., Alpena	(989) 354-9573
Circuit Ct. Admin.	Sue Szymanski	720 W. Chisholm St., Alpena	(989) 354-9573
Circuit Ct. Probation	Kelly Rhoads	PO Box 789, Atlanta	(989) 785-8095
88th District Ct. Judge	Theodore O. Johnson	719 W. Chisholm St., Alpena	(989) 354-9678
88th District Court Probation Officer	Kristen Cheedie	PO Box 789, Atlanta	(989) 785-8035
	Phil Kieliszewski	719 W. Chisholm St., Alpena	(989) 354-9683
Probate Court Judge	John E. Fitzgerald	PO Box 789, Atlanta	(989) 785-8064
Probate Registrar	Jodi Gordon	PO Box 789, Atlanta	(989) 785-8064
Juvenile Officer	Nancy Kries	PO Box 789, Atlanta	(989) 785-8059
Equalization Director	Kevin Keller	PO Box 789, Atlanta	(989) 785-8046
Building Inspector	Joe Stone	PO Box 789, Atlanta	(989) 785-8006
Electrical Inspector	Frank Rosinski	PO Box 789, Atlanta	(989) 785-8006

Plumbing/Mechanical	Bruce Tillinger	PO Box 789, Atlanta	(989) 785-8006
Drain Commissioner	Jim Zavislak	PO Box 789, Atlanta	(989) 785-8043
Veterans Affairs	Jim Zavislak	PO Box 789, Atlanta	(989) 785-8043
MSU Extension	Kelley Hiemstra	PO Box 789, Atlanta	(989) 785-8013
DHS Director	John Keller	PO Box 427, Atlanta	(989) 785-4218
Housing Inspector	Joe Stone	PO Box 789, Atlanta	(989) 785-8006
Soil Erosion Officer	Joe Stone	PO Box 789, Atlanta	(989) 785-8006
Econ. Dev. Corp. Dir.	Board of Comm.	PO Box 789, Atlanta	(989) 785-8002
Co. Libraries Director	Lori Weaver	PO Box 438, Atlanta	(989) 785-3941
MOA Landfill Auth.	Sandy Cunningham	PO Box 13, Atlanta	(989) 785-6500
Emergency Mgmt.	Dave Utt	PO Box 789, Atlanta	(989) 785-4141
Conservation District	Tom Williams, Chair	PO Box 789, Atlanta	(989) 785-4083
Housing Commission	NEMAH		(231) 627-9090

Township Government

Montmorency County has eight townships:

- Albert Township, 4360 Hanson, PO Box 153, Lewiston, MI 49756, 786-2513
- Avery Township, 11010 McMurphy Rd., PO Box 665, Atlanta, MI 49709, 785-3278
- Briley Township, 11331 West Street, PO Box 207, Atlanta, MI 49709, 785-4050
- Hillman Township, 24220 Veterans Memorial Hwy., PO Box 25, Hillman, MI 49746, 742-3096
- Loud Township, 3910 M-33, 16210 Harwood Rd., Atlanta, MI 49709, 785-3263
- Montmorency Township, 20841 N. County Rd. 457, PO Box 457, Hillman, MI 49746, 742-3619
- Rust Township, 23390 Cohoon Rd., PO Box 456, Hillman, MI 49746, 742-3535
- Vienna Township, 2734 M-32, PO Box 132, Johannesburg, MI 49751, 786-2884

Village Government

Village of Hillman, 2420 Veterans Memorial Hwy., PO Box 96, Hillman, MI 49746, 742-4751.

Public Safety

Law Enforcement

The County Sheriff's Department provides police protection for all of Montmorency County. Their office is located just west of Atlanta on M-32. Address: 11045 M-32, Atlanta, Michigan 49709, Phone: (989)785-4238.

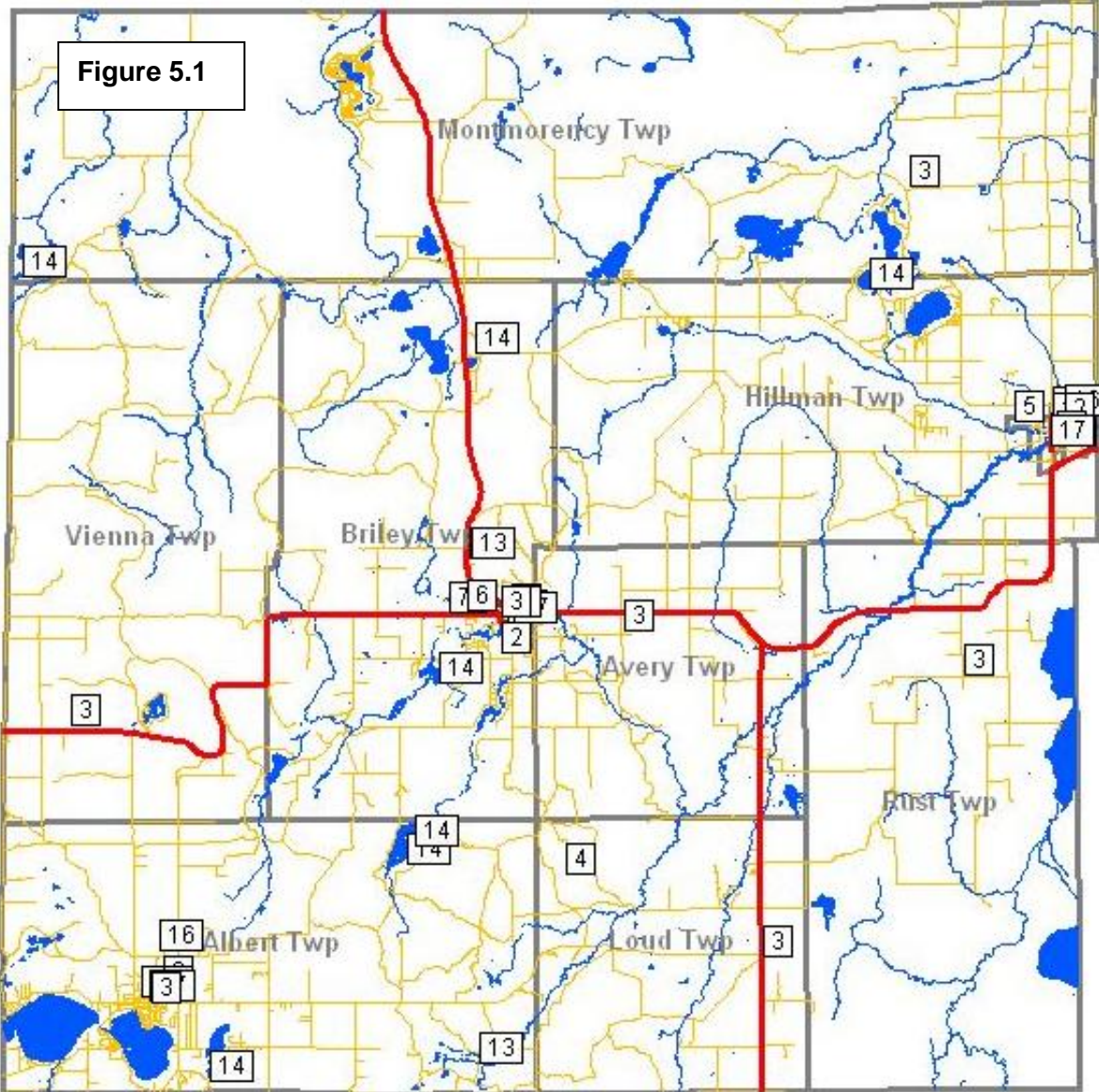
The Sheriff's Department operates a county jail, which is currently a 40 bed facility and a county-wide 911 emergency service. The jail portion of the Department employs seven corrections officers, one corrections/dispatch officer, and one corrections supervisor. In addition to the County Sheriff's Department, Montmorency County is also protected by the Michigan State Police, Location/Address: Hanson St., Lewiston, MI 49756, Phone: (989) 786-2275.

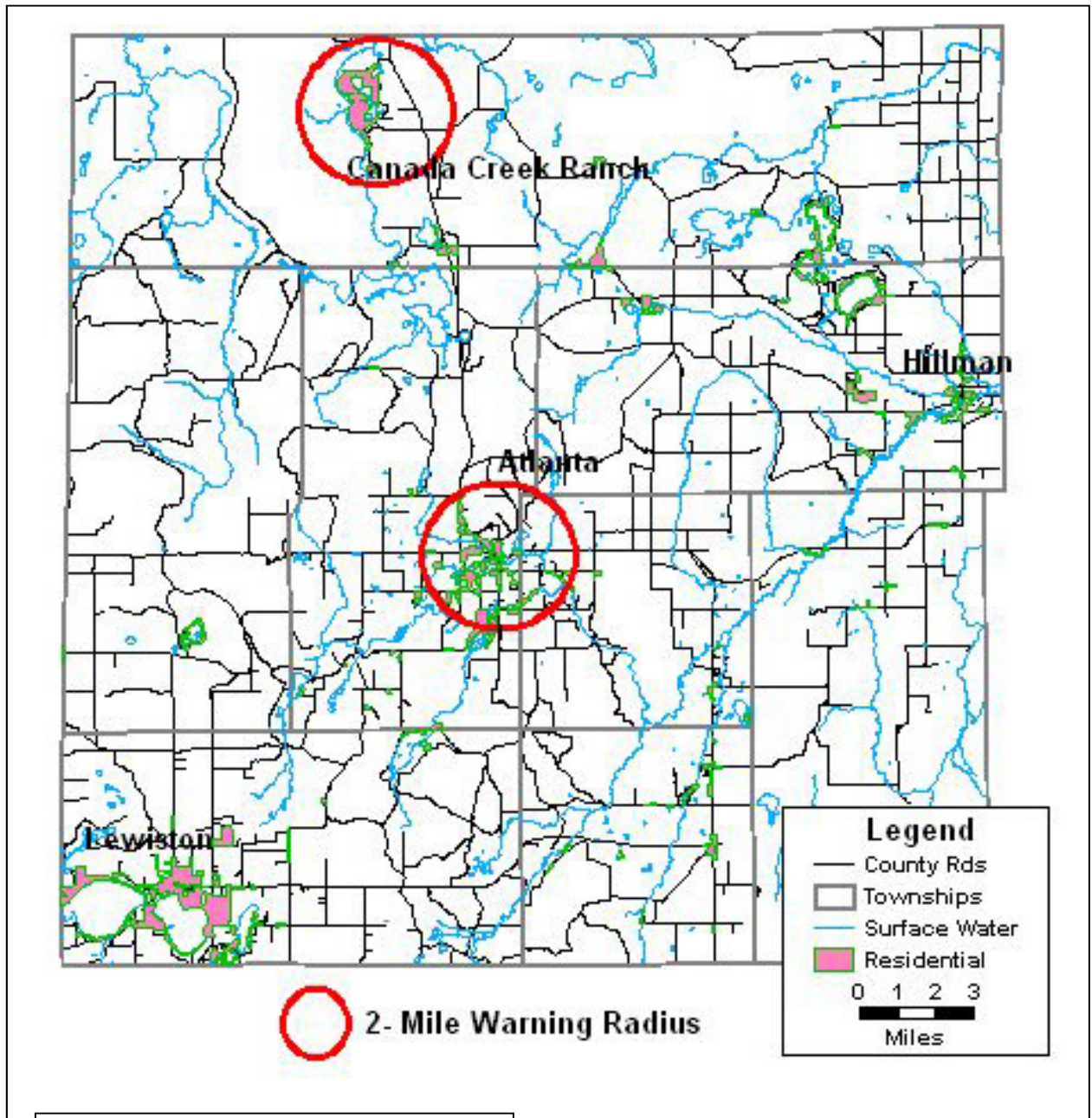
Early Warning & Siren Systems

There are currently two active sirens located in Montmorency County. **(Figure 5.2)** One is located at the Tri-Townships Fire Station in Atlanta; the second is operated from the fire station at Canada Creek Ranch. Both sites serve population density centers in the County. There are no sirens warning systems functioning in either the Village Hillman or Lewiston population

centers. The County warning system is also integrated into the National Weather Service's NOAA Weather Radio alert system and the National Emergency Alert System. Signal coverage in Alpena County is comprehensive with coverage from the NOAA transmitter in Alpena serving eastern Montmorency County and the Gaylord transmitter covering the western portions of the County. The Emergency Alert System also broadcasts over every radio and television station in the area. But this coverage is compromised since many of the county's rural residents receive their TV programming via satellite, which in many cases does not broadcast local information.

Fire Stations	1	Bus Stations	10
Schools	2	Ports/Harbors	11
Govnt Buildings	3	Colleges/Universities	12
Solid Waste Facilities	4	DNR Offices	13
WWTP	5	Campgrounds	14
Muni. Water Supplies	6	Traffic Counts	15
Police Stations	7	Industrial Parks	16
Medical Facilities	8	Cham. of Comm.	17
Health Dept Buildings	9		





**Figure 5.2, Montmorency County
Siren Warning System**

Fire Protection

Albert Township Fire Department

Location: 4196 Salling Ave. Lewiston 989-786-3900
Equipment: 2- Class A Pumpers 1250 GPM, 1- 4000 gallon Tanker, 1-2000 gallon Tanker, 2- Brush Trucks, 1- ALS, 1-BLS Ambulances
Staff: 34 paid on call
Budget: \$490,000. annually from millage and patient pay.
Service Area: Albert Township (72 sq. miles)
Population Served: 2400

Tri-Township Fire Department

Location: 12423 Jerome Street, Atlanta 989-785-4141
Sub Station 3910 M-33 South 1-Class A Pumper 1000 GPM
Equipment 2- Class A Pumpers 1250 GPM, 1-2000 Gallon Tanker, 1- Brush Truck, 1 Off Road Rescue Vehicle (Kubota RTV)
Staff: 24 paid on call
Budget: \$126,500. annually from millage
Service Area: Townships of Avery, Briley & Loud (144 Sq. miles)
Population Served: 2550

Hillman Area Fire Department

Location: 131 West Third Street, Hillman 989-742-3221
Equipment: 2 Class A Pumpers 1250 GPM, 2- 2000 Gallon Tankers, 1-Brush Trucks, 1-All Purpose Vehicle, 1-Off Road Rescue Vehicle (Kubota RTV) 1-Mobile Command Trailer
Staff: 23 volunteers
Budget: \$90,000. annually from millage
Service Area: Townships of Montmorency, Rust and Hillman (408 sq. miles)
Population Served: 4500

Vienna Township Fire Department

Location: 1764 M-32 Johannesburg 989-786-7805
Equipment: 1-Class A Pumper 1250 GPM, 1-2000 Gallon Tanker 1-Brush Truck
Staff: 8 paid on call
Budget: \$8,000. annually from millage
Service Area: Vienna Township (72 sq. miles)
Population Served: 600

Emergency Medical Services

Albert Township Fire Department (see above information)
Provides staffed 24-hour ALS ambulance service to its service area

Tri-Township Ambulance Service

Location: 11413 Parland Street, Atlanta 989-785-4841
Equipment: 4- ALS Ambulances
Staff: 8 paid
Budget: \$300,000. Annually from millage and patient pay

Service Area: Townships of Avery, Briley, Loud, Vienna and ½ of Montmorency (288 sq. miles)
Population Served: 3500
Provides staffed 24-hour ALS ambulance service to its service area
Provides intra hospital transfers not reflected in above numbers

Hillman Area Ambulance Service

Location: 131 West Third Street, Hillman 989-742-3221
Equipment: 2- ALS 1-BLS Ambulances
Staff: 24 paid
Budget: \$445,000. annually from millage and patient pay
Service Area: Townships of ½ Montmorency, Rust and Hillman (336 sq. miles)
Population Served: 4200
Provides staffed 24-hour ALS ambulance service to its service area

Medical Facilities

There is no hospital in Montmorency County. Most of the county's residents obtain hospital related services in nearby larger cities such as Gaylord or Alpena, both of which have hospitals and more specialized medical services.

Thunder Bay Community Health Services is a federally qualified community health center serving underserved populations in Northeastern Lower Michigan. Thunder Bay operates two clinics in Montmorency County; in Hillman and in Atlanta. These clinics offer outpatient care,

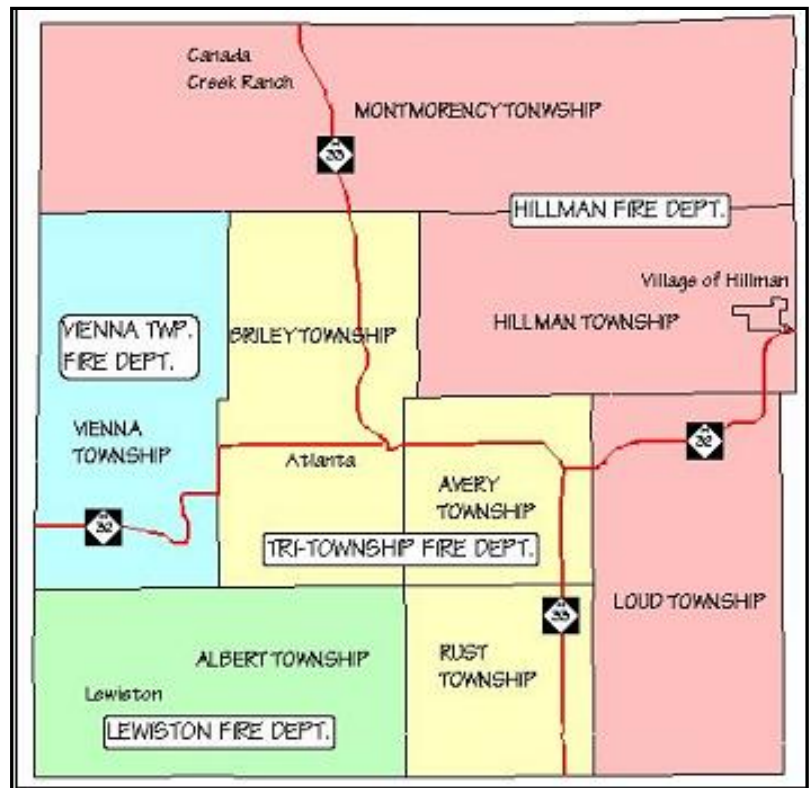
ambulatory care, family practice, and occupational medicine. The doctors who practice at these clinics have staff privileges at Alpena General Hospital.

Pharmacies are located in Montmorency County at Thunder Bay Community Health Services in Atlanta, at Rite Aid Pharmacy in Lewiston and at Hillman Pharmacy in Hillman.

There is one private dentist who operates offices in both Hillman and Atlanta and one dentist who has an office in Lewiston.

District Health Department #4 also helps to fill community health care needs not available or affordable elsewhere. The Health Department service area includes Alpena, Cheboygan, Montmorency and Presque Isle Counties. Programs offered by the Health Department fall into three categories: home health care services,

Figure 5.3: Montmorency County - Fire Departments



environmental health services, and personal health services. Other home health care services include hospice and a number of private home health care providers.

Utilities

Water & Sewer

Except for more populated communities, the majority of land area throughout Montmorency County is not served by either municipal water or sewer services. The Village of Hillman is the only community in the county that has both municipal water and sewer services, while parts of both Briley and Albert Townships have a municipal water system.

The Village of Hillman's water and sewer systems serve most of the developed portions of the Village. The treatment works were originally constructed in 1977. The Village has approximately 300 customers on their water system and 275 on their sewer system. They recently extended both the water and sewer lines out to serve the new high school/middle school complex located west of the Village on M-32. In the near future, the Village plans to upgrade some of the older lift stations and dredge the lagoon.

Briley Township operates a public water system on a pay per user fee system for a limited area of the Township. The water system was created to service the areas in the community where groundwater contamination had occurred in the past. The Briley Township water system services portions of downtown Atlanta and extends westerly to the County Road Commission building, north along M-33 to the IGA store, and to the south of Atlanta. A one and one-half mile extension was recently completed to McArthur Road. Briley Township does not operate a public sewage or wastewater disposal system. Township residents and businesses rely on individual septic absorption fields or holding tanks. The District #4 Health Department has detected pollutants in the groundwater supply in downtown Atlanta. Numerous septic systems in and around the downtown area have experienced failures in the past. Many businesses in the downtown Atlanta area utilize holding tanks, which must be frequently pumped.

Albert Township has a very small public water system which serves customers in the downtown area of Lewiston. As with the majority of the county, Albert Township businesses and residents have individual septic systems rather than a municipal sewer system.

Solid Waste

Collection of residential and commercial solid waste in Montmorency County is accomplished by commercial providers or by individuals transporting their own waste to transfer stations or to the landfill. Private hauling companies provide residential and commercial service pick-up throughout the county through private agreements with customers. The county is served by three to four commercial waste hauling companies. The primary solid waste disposal facility is the Montmorency-Oscoda Sanitary Landfill in Loud Township. The contingency landfill is the Waste Management facility in Waters, Michigan.

Residents can recycle certain materials through the use of recycling drop-off sites in Hillman and Lewiston. Montmorency and Alpena Counties have formed a multi-county recycling authority. The Authority is presently working on expanding the area's ability to process recycling materials by developing drop-off sites throughout the region. Materials collected will be taken to a central processing site in the City of Alpena. Periodic household hazardous waste drop-off days are held in Montmorency County and in other nearby areas. More information concerning solid waste can be found in the "Montmorency County Solid Waste Plan".

Telephone, Natural Gas & Electric

Telephone service is provided throughout most of the county by Verizon (formerly GTE). Residents and commercial users have the option of choosing long distance service from several providers. Wireless telephone service is also available from a variety of providers. Cellular telephone reception, however, is spotty in many areas of the county.

There are however currently significant areas in Montmorency County that have no telephone coverage. **Figure 5.3** demonstrates the areas of Northeast Lower Michigan with no telephone service

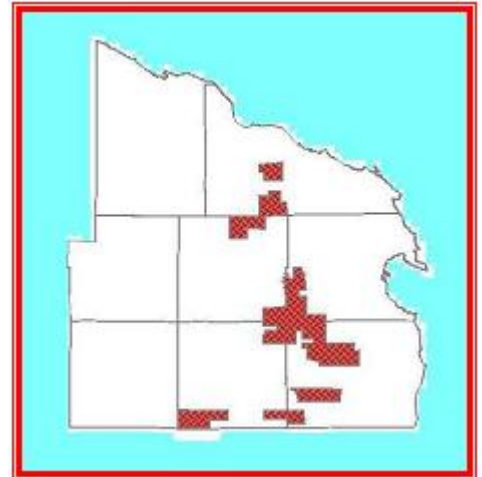


Figure 5.4: NE Michigan Unserved Telephone Area

Natural gas is available in some of the more populated areas of the county (Hillman, Atlanta and Lewiston) from Presque Isle Electric and Gas Cooperative and MichCon. Residents and businesses in the more rural areas may purchase propane gas or fuel oil from several suppliers throughout the area, while some residents elect to heat with wood.

Electric service is found in all areas of the county, provided by either Presque Isle Electric and Gas Cooperative or Alpena Power. Hillman Power Co. generates electricity at their wood fired plant located in Hillman. They then sell that power to Consumers Energy. In 1955, the Hillman Water & Light Company was purchased by Alpena Power Company and continues to produce electricity at the Hillman Dam, near the Village of Hillman.

Schools

Montmorency County is served by three public school districts: Atlanta Community Schools, Hillman Community Schools and Johannesburg-Lewiston Area Schools. Enrollment figures are found below on **Table 5.1**. **Figure 5.5** shows the geographic extent of each of the school districts within Montmorency County.

The Johannesburg-Lewiston Area School district has the highest enrollment of the three Montmorency districts. This district, however, draws students from outside of Montmorency County in the Johannesburg area of Otsego County. Enrollment in the Johannesburg-Lewiston District has been edging upwards, while both the Hillman and Atlanta Districts have been slowly losing enrollment. (**Figure 5.6**)

There are no post-secondary educational institutions located within Montmorency County. The closest college is Alpena Community College located in Alpena. Two other community colleges are located within the northern Lower Peninsula Michigan region - Kirtland Community College in Roscommon and North Central Michigan College (NCMC) located in Petoskey. These two-year institutions offer a wide variety of associate degree programs, career and technical training, liberal arts and transfer programs. Additionally, the M-Tech Center located in Gaylord is affiliated with Kirtland Community College and offers a wide variety of technical training opportunities to residents of the area. The University Center, also located in Gaylord, is

affiliated with several Michigan colleges and universities through which they offer an opportunity for local residents to take college level classes in a variety of academic pursuits.

Public Facilities

The County Courthouse is located in Atlanta. In 2001, Montmorency County completed an addition to the Courthouse. The addition provides needed space to accommodate District #4 Health Department and court associated facilities. Township halls serve as civic centers and most are made available for family functions such as wedding receptions. The Hillman Civic Center serves as offices for Hillman Township and the Village of Hillman. The County Road Commission facility and County Sheriff Department are located in Atlanta. The Michigan Department of Transportation maintenance facility, Michigan Department of Natural Resources field office, Family Independence Agency, and Michigan Works are other governmental agencies are housed in Atlanta. The

Montmorency County Fairgrounds are located north of Atlanta on M-33. The Hunt Creek Research Station is a state-run cold water fisheries research facility located in eastern Albert Township.

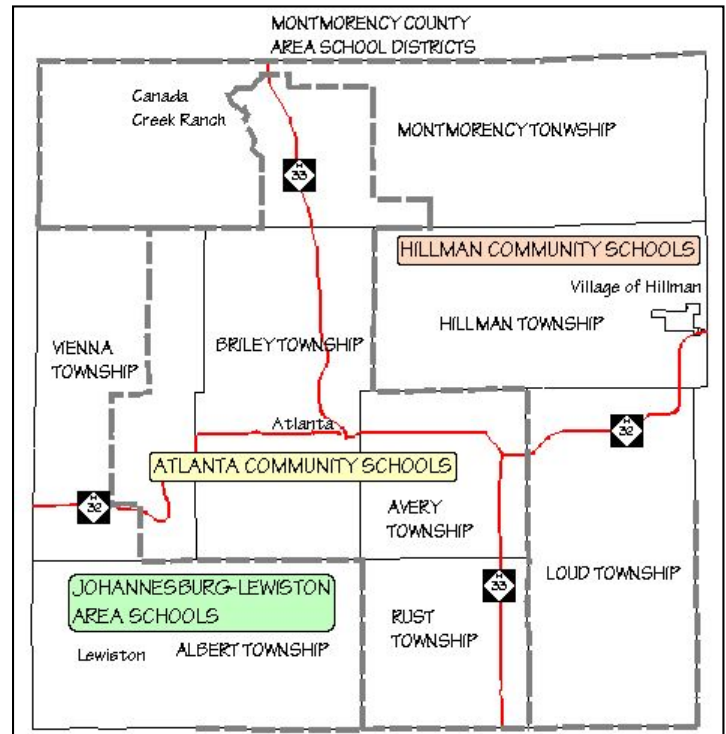


Figure 5.5: Montmorency County, School Districts

Montmorency County operates three branch library facilities located in Lewiston, Hillman and Atlanta. There is one museum located within the county. The Lewiston Area Historical Society owns and operates a historical museum. The Historical Society has been restoring this building to its original state and keeps it open to the public from Memorial Day to Labor Day and at other times by special appointment.

Transportation Network

Roads

Montmorency County's road network is critical to providing the flow of goods and services and for enabling people to move efficiently to and from employment, shopping and recreational sites. State highway M-32 is the major east-west road through the county, connecting the Montmorency County communities of Vienna, Atlanta and Hillman. M-32 provides westerly access to Gaylord, in Otsego County, which then connects to I-75 and to other parts of the State. M-32 east provides access to the Alpena area, which then intersects with US-23 running north and south along the Lake Huron shoreline. The county's major north-south road is M-33, which intersects the county in Atlanta. Following M-33 north takes the traveler to Onaway and Cheboygan while M-33 south goes to Fairview and Mio and beyond.

All public roads in Montmorency County are under the jurisdiction of the Montmorency County Road Commission with the exception of M-32 and M-33 and the local streets in the Village of Hillman. M-32 and M-33 are overseen by the Michigan Department of Transportation (MDOT). The Village of Hillman maintains its own local street system. MDOT operates a garage approximately one mile east of Atlanta on M-32. The Montmorency County Road Commission's central garage is located approximately one mile west of Atlanta on M-32, with satellite garages near Lewiston and Hillman.

Thunder Bay Transportation Authority

The Thunder Bay Transportation Authority, a public authority formed under PA 196, provides transportation services for area elderly, handicapped, and special needs passengers. The Authority services Alpena, Alcona and Montmorency Counties as well as Presque Isle County south of M-68, including Rogers City, Onaway and Posen. It operates five days a week and by special contract other times and days and has a fleet of 16 small busses and six vans, of which 20 of the vehicles are equipped with lifts.

Air Transportation

There are no regularly scheduled airline services available to and from Montmorency County. There are three small airports within the county in Hillman, Atlanta and Lewiston that can accommodate small private airplane traffic. Commercial airline service is available at the Alpena County Regional Airport just west of the City of Alpena. Daily airline service is offered between Alpena and Detroit Metro Airport with connecting flights from that point. Charter airplane services are also available from the Alpena Airport as well as air freight services. Other larger airports within the area which offer a wide variety of commercial flights and other services include Pellston Regional Airport in Pellston and the Cherry Capital Airport in Traverse City.

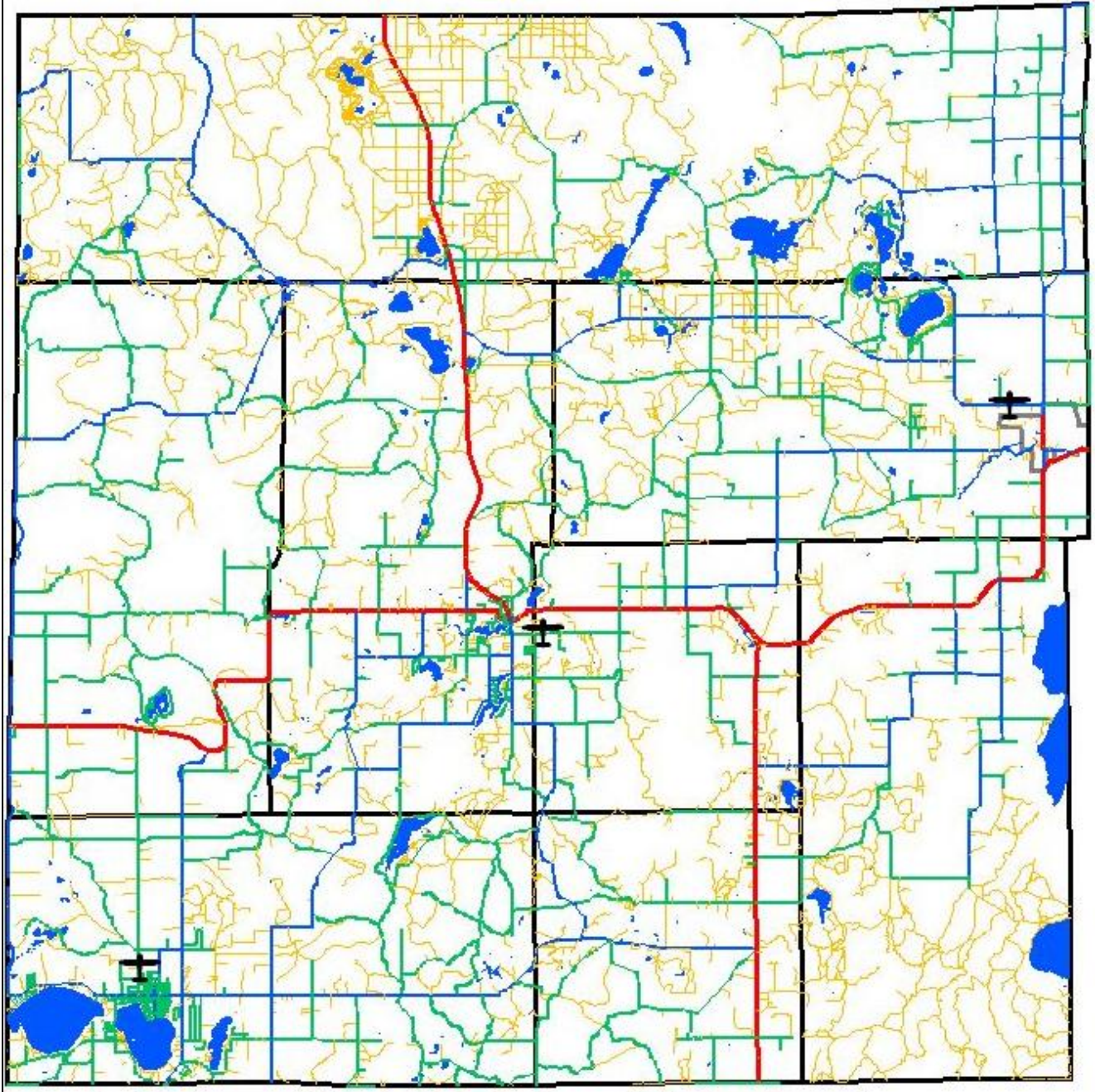


Figure 5.7:
Montmorency County,
Transportation Network

