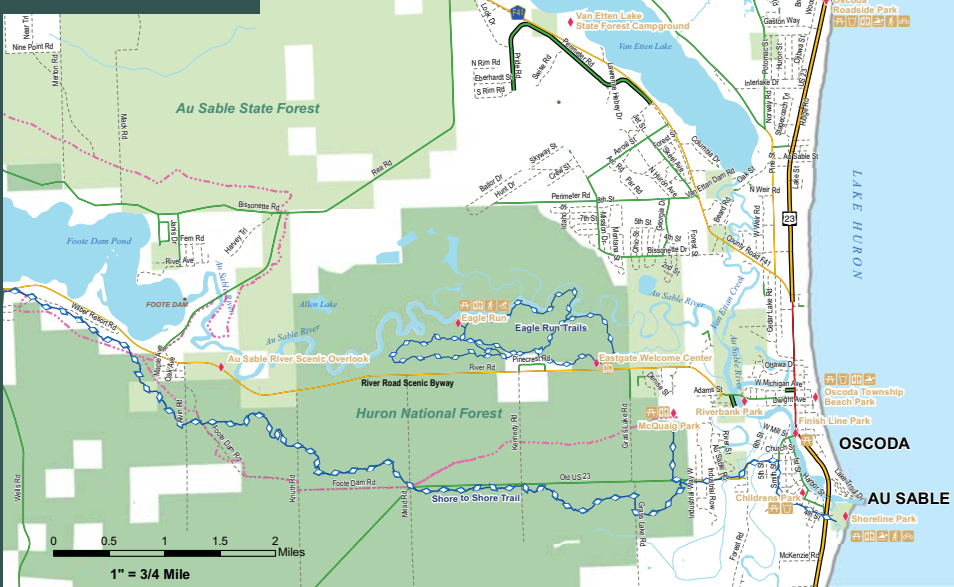


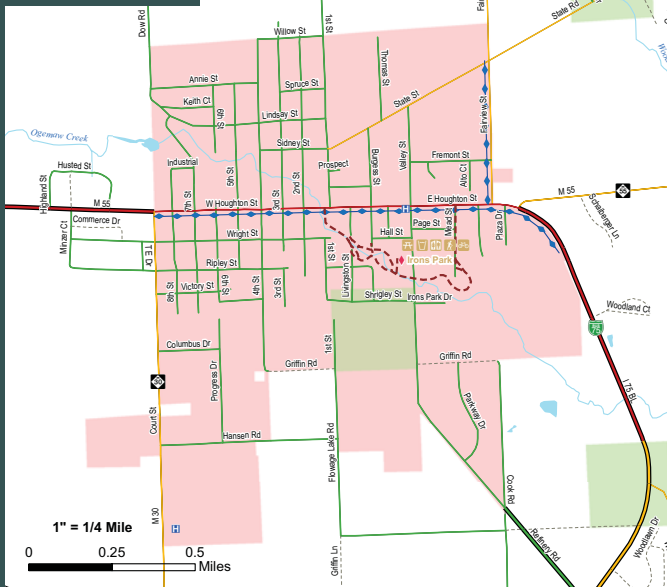
Tawas City/East Tawas



Oscoda/Au Sable



West Branch



Bicycle Safety

Be predictable and act like a vehicle
Bicyclists on public roadways have the same rights and responsibilities as automobile drivers and are subject to the same state laws and ordinances.

Always wear an approved helmet
Always have your helmet fitted and adjusted properly. Helmets should fit snugly so that they do not move around while riding.

Ride with traffic
Motorists are not looking for bicyclists riding on the wrong side of the road. State law requires that cyclists ride with the flow of traffic.

Use hand signals
Hand signals tell pedestrians and motorists what you intend to do. It is state law that you use hand signals.

Watch for cars pulling out
Always assume that motorists do not see you. Make eye contact with the driver to assess your safety before proceeding in front of a vehicle.

Wear appropriate clothing
Wear light, bright and/or reflective clothing at all times to improve your visibility. Dress in layers and bring gear for unforeseen changes in the weather.

Use lights at night
State law requires a front white light visible for 500 ft and a red reflector visible for 600 ft at night. More reflectors and stronger lights make you more visible.

Be courteous and respectful on trails
Show courtesy to all trail users. Adhere to trail hours and restrictions. Respect rights of property owners.

Always yield to other, slower trail users
Slow down and use caution when approaching other trail users. When overtaking, announce your intent by saying "passing on the left" or ringing your bell.

Ride as far to the right as practical
Form a single file line when other users are present. Slower trail users should stay to the right.

