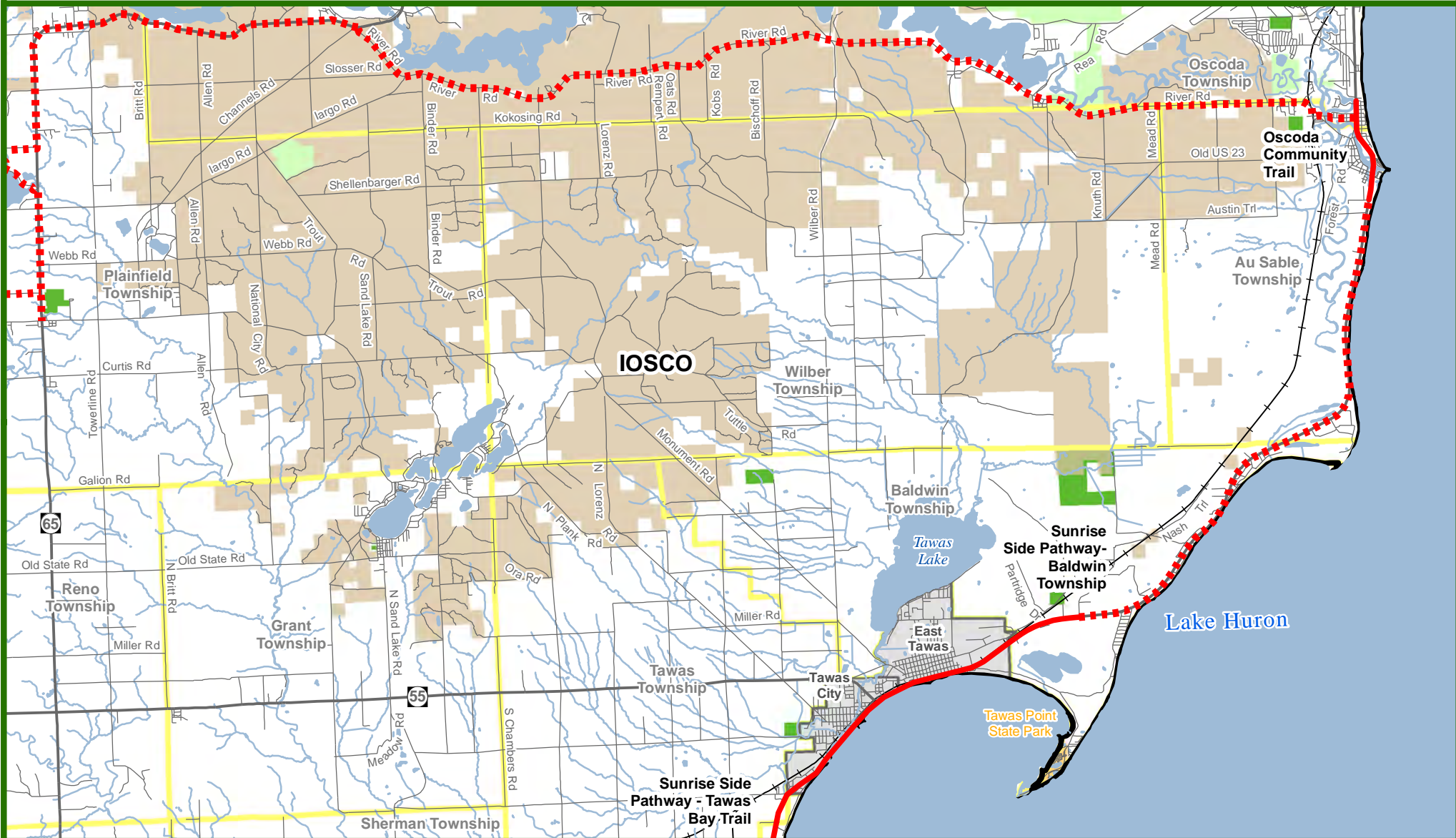


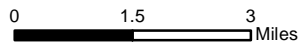


Michigan's Iron Belle Trail - Two Routes, One Great Trail

Sunrise Side Pathway on US-23 - Oscoda Community Trail - Iosco County River Pathway



** The illustrated hike and bicycle trail connections will rely upon partnership opportunities. **



March 30, 2017
Michigan Department of Natural Resources
Forest Resources Division
Resource Assessment Section

Biking Trail

Biking - Existing Trail

Biking - Proposed Trail

Road Type

Highway

Paved Road

Gravel Road

Railroad

River

Lake

State Park Boundary

State Land

Federal Land

Public Land

City or Village

Township

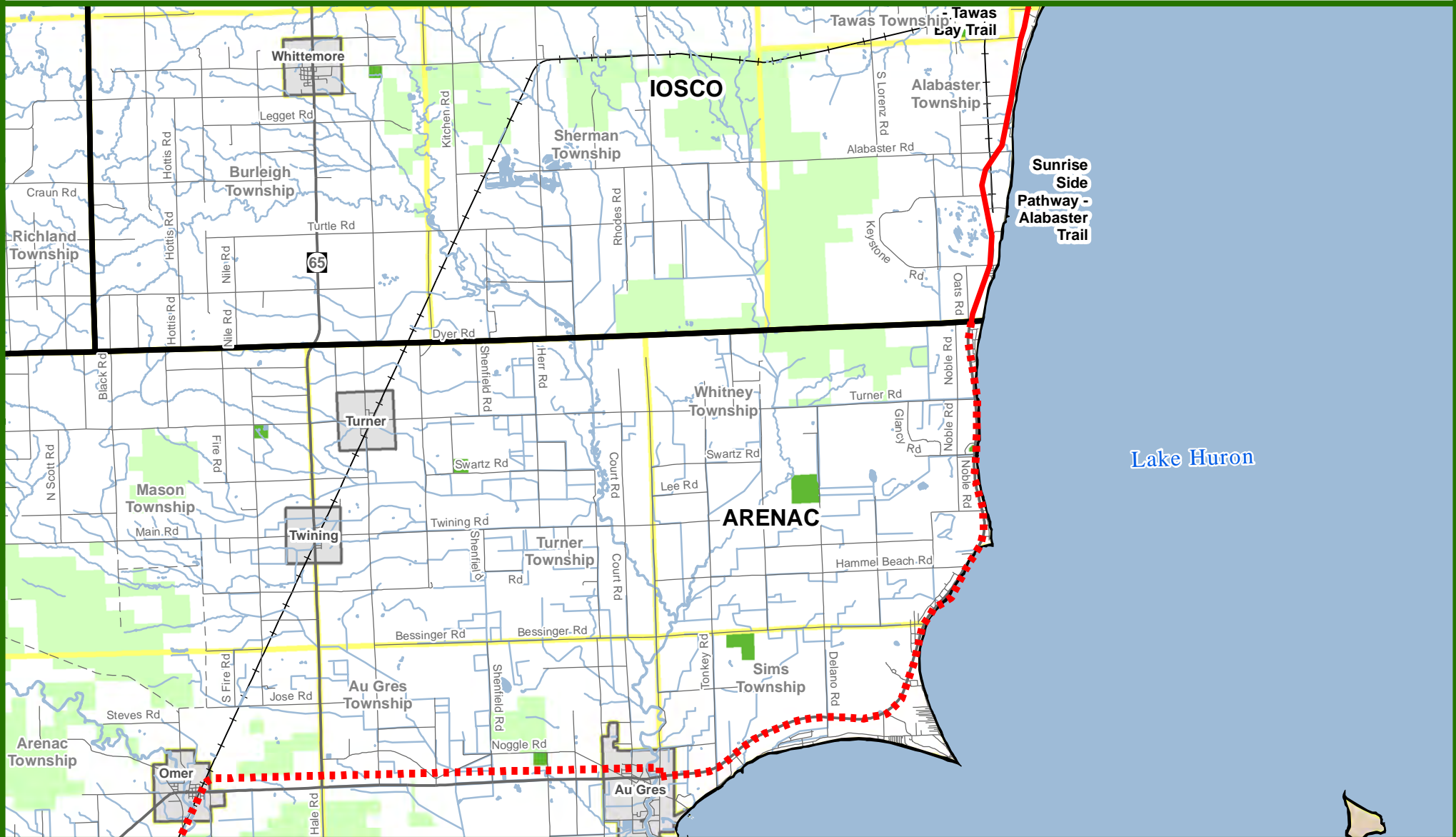
County



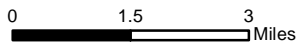


Michigan's Iron Belle Trail - Two Routes, One Great Trail

Au Gres - Sunrise Side Pathway on US-23



** The illustrated hike and bicycle trail connections will rely upon partnership opportunities. **



March 30, 2017
Michigan Department of Natural Resources
Forest Resources Division
Resource Assessment Section

Biking Trail

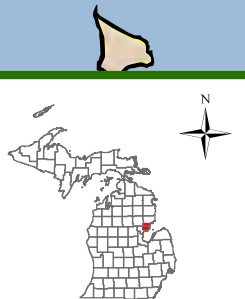
- Biking - Existing Trail
- - - Biking - Proposed Trail

Road Type

- Highway
- Paved Road

- - - Gravel Road
- + Railroad
- River
- Lake
- State Land
- Federal Land

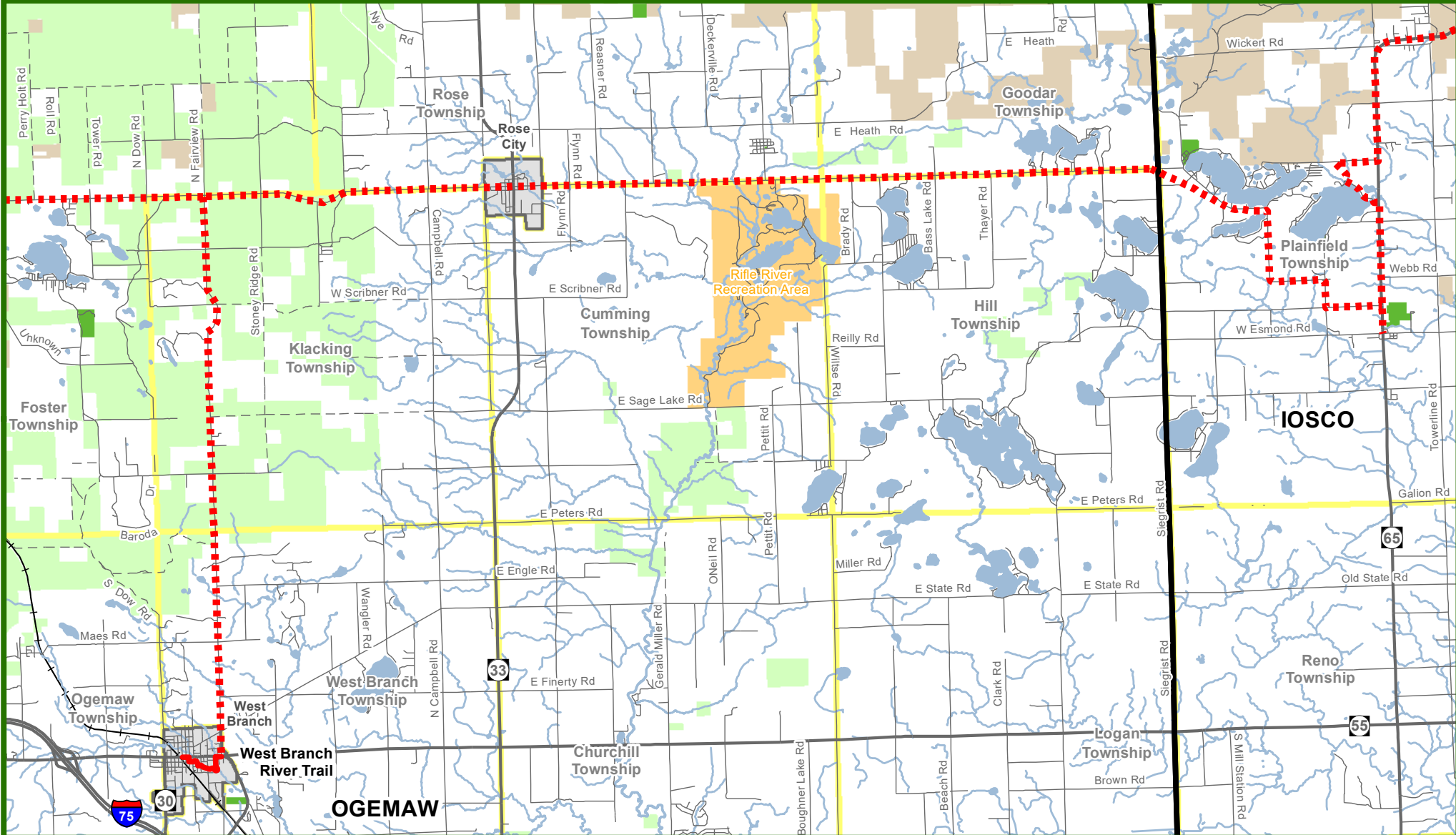
- Public Land
- City or Village
- Township
- County



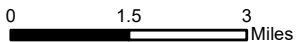


Michigan's Iron Belle Trail - Two Routes, One Great Trail

Iosco County River Pathway - County Road F-28 - Rose City - Consumers Energy - M-55 West Branch



** The illustrated hike and bicycle trail connections will rely upon partnership opportunities. **



May 5, 2017
Michigan Department of Natural Resources
Forest Resources Division
Resource Assessment Section

Biking Trail

- Biking - Existing Trail
- Biking - Proposed Trail

Road Type

- Highway
- Paved Road

Gravel Road

Railroad

River

Lake

State Park Boundary

State Land

Federal Land

Public Land

City or Village

Township

County

