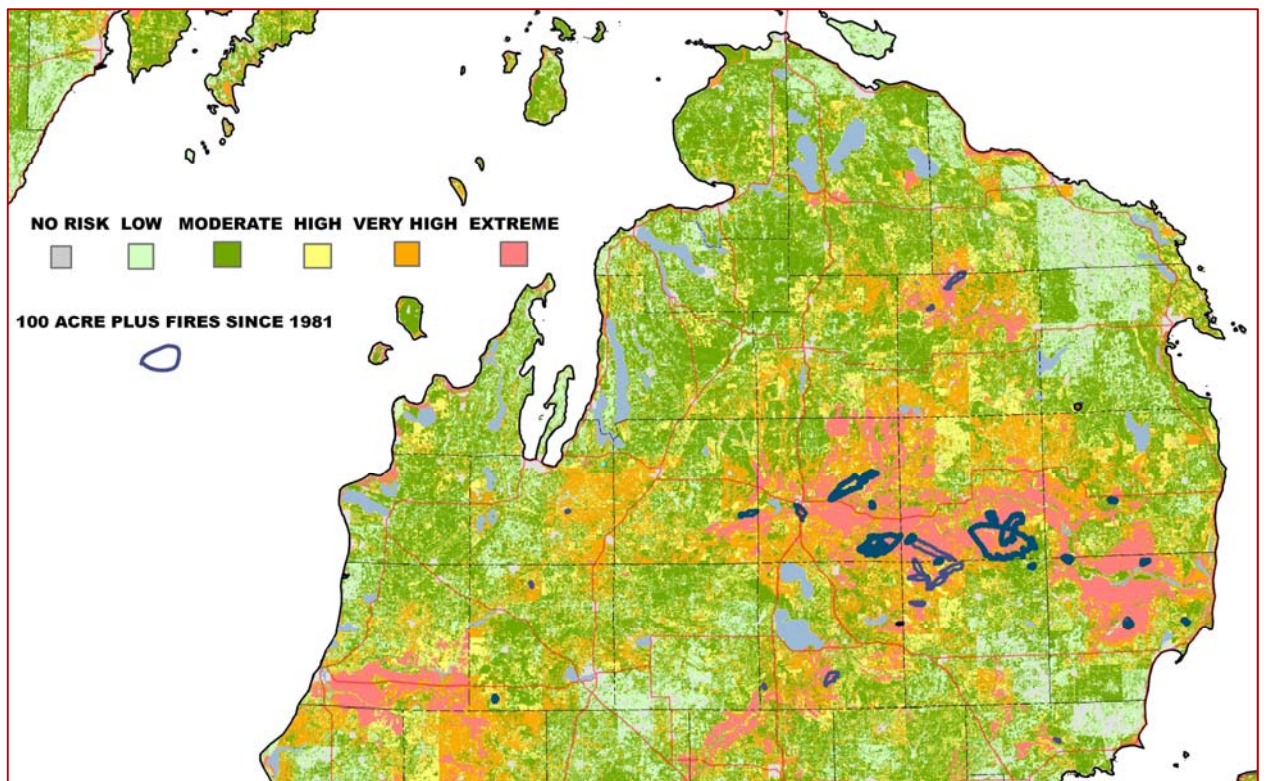


Crawford County Michigan



Crawford County Office of Emergency Management
202 W. Michigan Ave.
Grayling, MI 49738

2014

CRAWFORD COUNTY HAZARD MITIGATION PLAN

Crawford County, Michigan

Prepared for:

Crawford County
and the
Communities of Crawford County

Prepared by:

Northeast Michigan Council of Governments
121 East Mitchell Street
P. O. Box 457
Gaylord, Michigan 49735

Adopted:

**CRAWFORD COUNTY
HAZARD MITIGATION PLAN
TABLE OF CONTENTS**

CHAPTER 1 - INTRODUCTION	1-1
Overview	1-1
Location & Regional Setting	1-1
Purpose and Approach	1-1
Information Collection	1-2
Geographic Information System Support	1-2
Increased Community Awareness	1-3
Hazard Mitigation Steering Committee	1-3
Community Involvement	1-3
Governmental Participation	1-3
Community Surveys	1-4
Public Input	1-4
Summary of Review and Plan Adoption	1-4
Summary of Recommended Plan Implementation Process	1-4
CHAPTER 2 - ENVIRONMENT	2-1
Overview	2-1
Climate	2-1
Severe Weather	2-2
Topography	2-3
Geology	2-4
Soils	2-4
Water Resources	2-7
Woodland Resources	2-7
Sites of Environmental Contamination	2-10
CHAPTER 3 - POPULATION AND ECONOMIC CHARACTERISTICS	3-1
Population Overview	3-1
Population	3-1
Population by Municipality	3-1
Seasonal Population	3-1
Age Distribution	3-2
Housing Stock	3-4
Economic Overview	3-5
CHAPTER 4 - LAND USE CHARACTERISTICS	4-1
Land Divisions and Ownership	4-1
Land Cover/Use	4-1

CHAPTER 5 - COMMUNITY SERVICES AND FACILITIES	5-1
Overview	5-1
County Government	5-1
County Officials.....	5-1
Township Government.....	5-2
Public Safety.....	5-2
Medical Facilities	5-7
Public Water Supply	5-7
Utility Services	5-7
Schools	5-8
Special Populations	5-8
Governmental Facilities.....	5-9
Community Events	5-10
Roads and Highways	5-11
Public Transportation	5-12
Rail Service	5-12
Airports.....	5-12
Early Warning & Siren System.....	5-12
CHAPTER 6 -HAZARD IDENTIFICATION	6-1
Overview.....	6-1
High Priority Hazards in Crawford County	6-1
Fire Hazards	6-1
Wildfire.....	6-1
Scrap Tire Fires	6-3
Structural Fires.....	6-5
High Priority Technological Hazards	6-5
Hazardous Materials Incident - Fixed Site	6-5
Hazardous Materials Incident - Transportation	6-6
Air, Land, and Water Transportation Accidents.....	6-6
Infrastructure Failures	6-8
Oil & Gas Pipeline Accidents	6-9
Oil & Gas Well Accidents	6-9
Natural Hazards	6-10
Summer Severe Weather Hazards.....	6-10
Hailstorms	6-10
Tornadoes	6-11
Severe Winds.....	6-12
Lightning	6-12
Other Natural Hazards.....	6-15
Drought	6-15
Severe Winter Weather Hazards	6-16
Ice & Sleet Storms	6-16
Snowstorms.....	6-18
Extreme Temperatures	6-18

Earthquakes.....	6-20
Subsidence	6-20
Societal Hazards	6-21
Nuclear Attack.....	6-21
Sabotage/Terrorism	6-21
Public Health Emergencies.....	6-21
Civil Disturbances	6-22
Nuclear Power Plant Accidents	6-22
Flooding Hazards	6-23
Dam Failures.....	6-23
Riverine & Urban Flooding	6-23
Mitigation Planning Sectors	6-23
CHAPTER 7- HAZARD RISK AND VULNERABILITY ASSESSMENT	7-1
Hazard Ranking Methodology.....	7-1
Evaluation Criteria.....	7-1
Hazard Analysis Evaluation Measures	7-2
Hazard Analysis Evaluation Measure Benchmark Factors.....	7-3
Risk Assessment and Vulnerability Assessment Summary	7-5
Vulnerable Situations in Crawford County.....	7-6
Wildfire.....	7-6
CHAPTER 8 - COMMUNITY GOALS AND OBJECTIVES	8-1
Overview.....	8-1
Crawford County Goals and Objectives.....	8-1
CHAPTER 9 - MITIGATION STRATEGIES AND PRIORITIES	9-1
Mitigation Categories.....	9-1
Identification of Mitigation Projects & Actions	9-1
Evaluation and Prioritization of Mitigation Actions	9-2
Action Implementation Assessment	9-3 thru 9-18
CHAPTER 10 - ADOPTION AND IMPLEMENTATION	10-1
Adoption Process	10-1
Plan Implementation	10-1
Process for Monitoring, Evaluating, & Updating.....	10-2
Process to Incorporate into Local Planning Activities	10-3
Ongoing Public Participation.....	10-3
Hazard Mitigation Plan Adoption Resolution.....	10-4
APPENDIX A, Hazard Definitions.....	A-1
APPENDIX B, Local Officials Survey.....	B-1
APPENDIX C, Evaluation of Mitigation Actions.....	C-1
APPENDIX D, Federal Funding Sources, 2004.....	D-1

APPENDIX E, State Funding Sources, 2004	E-1
APPENDIX F, County Warning Systems	F-1

LIST OF FIGURES

Figure	Title	Chapter-Page
Figure 1-1	Political Units, Crawford County	1-1
Figure 2-1	Michigan Average Snowfall	2-1
Figure 2-2	Crawford County Oil & Gas Exploration	2-5
Figure 2-3	Crawford County Building Constraints	2-6
Figure 2-4	Crawford County Soil Constraints	2-6
Figure 2-5	Crawford County Forestland	2-8
Figure 2-6	Crawford County Forestland Ownership	2-8
Figure 2-7	Crawford County Pre-Settlement Vegetation	2-9
Figure 2-8	Crawford County Forest Cover	2-9
Figure 3-1	Crawford County Age Distribution 2010	3-3
Figure 3-2	Trends in Median Age	3-2
Figure 3-3	Crawford County Unemployment Rate 2006 - 2010	3-6
Figure 4-1	Crawford County Parcel Size Map	4-2
Figure 4-2	Crawford County Public & Private Ownership	4-3
Figure 4-3	Crawford County Land Use 1992 Map	4-6
Figure 4-4	Crawford County Hazards Map	4-8
Figure 5-1	Crawford County Infrastructure Map	5-6
Figure 5-2	Crawford County Military Lands By Ownership	5-10
Figure 5-3	Crawford County Transportation Map	5-11
Figure 5-4	Crawford County Siren System	5-13
Figure 6-1	Historic Vegetation/Fire Observations	6-2
Figure 6-2	Crawford County Hazards Map	6-4
Figure 6-3	Crawford County Wildfires Location Map	6-4
Figure 6-4	Crawford County Major Transportation Routes	6-7
Figure 6-5	Camp Grayling Airfield	6-8
Figure 6-6	Crawford County Oil & Gas Wells	6-10
Figure 6-7	Lake Effect Snow Vulnerability from Northwest	6-19
Figure 6-8	Beaver Creek Township Base Map	6-26
Figure 6-9	Beaver Creek Township Hazards Map	6-27
Figure 6-10	City of Grayling Base Map	6-28
Figure 6-11	City of Grayling Hazards Map	6-29

Figure 6-12	Frederic Township Base Map	6-30
Figure 6-13	Frederic Township Hazards Map	6-31
Figure 6-14	Grayling Township Base Map	6-32
Figure 6-15	Grayling Township Hazards Map	6-33
Figure 6-16	Lovells Township Base Map	6-34
Figure 6-17	Lovells Township Hazards Map	6-35
Figure 6-18	Maple Forest Township Base Map	6-36
Figure 6-19	Maple Forest Township Hazards Map	6-37
Figure 6-20	South Branch Township Base Map	6-38
Figure 6-21	South Branch Township Hazards Map	6-39

LIST OF TABLES

Figure	Title	Chapter-Page
Table 2-1	Crawford County Average Temperature & Precipitation	2-3
Table 2-2	Crawford County Oil & Gas Exploration	2-4
Table 2-3	Crawford County Contamination Sites	2-10
Table 3-1	Population for Crawford County & Municipalities 1990-2000	3-1
Table 3-2	Age Distribution by Municipality 2010	3-4
Table 3-3	Housing Counts and Occupancy Status	3-5
Table 3-4	Select Demographics and Economic Indicators	3-5
Table 4-1	Crawford County Land Ownership	4-1
Table 4-2	Crawford County General Land Use	4-4
Table 5-1	Crawford County Fire Protection	5-4
Table 5-2	Crawford County Schools	5-8
Table 5-3	Special Populations	5-9
Table 5-4	Transit System Profile	5-12
Table 6-1	Wildfires by County in Northeast Michigan 1981-1999	6-4
Table 6-2	Severe Windstorms in Northern Michigan	6-14
Table 6-3	Lightning Related Deaths in Michigan 1959 - July 2001	6-15
Table 6-4	Economic Impact of Drought	6-17
Table 6-5	Snow Extremes for Grayling, MI 1991-2010	6-19
Table 6-6	Temperature Extremes for Grayling, MI 1991 – 2010	6-20
Table 7-1	Crawford County Hazard Evaluation Criteria	7-1

Table 7-2	Crawford County Hazard Rating	7-4
Table 7-3	Summary Hazard Rankings for Crawford County	7-5
Table 7-4	Crawford County Risk & Vulnerability Assessment Summary	7-8
Table 9-1 thru 9-16	Crawford County Mitigation Actions	9-3 thru 9-19