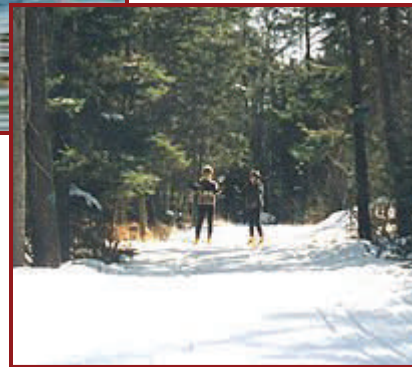


2009 – 2013

Crawford County



Recreation

Plan



Prepared By:

Grayling Recreation Authority
Northeast Michigan Council of Governments

**Crawford County
Recreation Plan
2009-2013**

Crawford County, MI

Adopted:
September 17, 2008

Prepared for:
**Crawford County Board of Commissioners
Beaver Creek Township
Grayling Recreation Authority
Grayling Township
Lovells Township
South Branch Township**

Prepared by:
Grayling Recreation Authority
7191 Old Lake Road
Grayling, MI 49738
(989) 348-9266
www.hansonhills.org/

Northeast Michigan Council of Governments
121 East Mitchell Street
PO Box 457
Gaylord, MI 49735
(989) 732-3551
www.nemcog.org

Planning staff from NEMCOG:
Laura Ingles – Economic Development Specialist

CRAWFORD COUNTRY RECREATION PLAN

Table of Contents

CHAPTER 1: COMMUNITY DESCRIPTION	1-1
Regional Location.....	1-1
Population.....	1-2
Sex, Race, Ancestry.....	1-2
Households.....	1-2
Housing Occupancy.....	1-3
Housing Characteristics.....	1-3
Age.....	1-3
School Enrollment & Educational Attainment.....	1-4
Labor Force & Employment Trends.....	1-5
Physical Characteristics.....	1-6
Land Use/Cover Patterns.....	1-6
Zoning.....	1-7
Topography and Soils.....	1-9
Hydric Soils and Steeply Sloped Areas.....	1-10
Water Resources and Fish & Wildlife.....	1-11
Climate.....	1-13
Utility Services.....	1-14
Transportation Systems.....	1-15
Media.....	1-15
 CHAPTER 2: ADMINISTRATIVE STRUCTURE	 2-1
Crawford County.....	2-1
Standard Operational Procedures.....	2-1
Parks & Recreation Staff.....	2-2
Current Year Budget.....	2-2
Grayling Recreation Authority.....	2-3
Standard Operational Procedures.....	2-3
Parks & Recreation Staff.....	2-4
Current Year Budget.....	2-4
Beaver Creek Township.....	2-7
Standard Operational Procedures.....	2-7
Parks & Recreation Staff.....	2-7
Current Year Budget.....	2-8
Grayling Township.....	2-10
Standard Operational Procedures.....	2-10
Parks & Recreation Staff.....	2-11
Current Year Budget.....	2-11
Lovells Township.....	2-16

Standard Operational Procedures.....	2-16
Parks & Recreation Staff.....	2-16
Current Year Budget.....	2-17
South Branch Township.....	2-18
Standard Operational Procedures.....	2-18
Parks & Recreation Staff.....	2-18
Current Year Budget.....	2-19
Relationships with Other Agencies/Groups.....	2-20

CHAPTER 3: RECREATON INVENTORIES.....	3-1
Crawford County & GRA Recreational Properties.....	3-1
Beaver Creek Township Recreational Properties.....	3-2
Grayling Township Recreational Properties.....	3-2
Lovells Township Recreational Properties.....	3-2
South Branch Township Recreational Properties.....	3-2
Other Recreational Properties.....	3-3
Parks and Campgrounds.....	3-3
State Parks and State and Federal Forest Campgrounds.....	3-3
Private Campgrounds.....	3-4
Trails.....	3-4
Public Water Access Sites.....	3-5
Boating/Fishing Access Sites.....	3-5
Canoe Liveries.....	3-6
Privately Owned Recreation Facilities.....	3-6
Miscellaneous.....	3-6
Resorts, Cabins & Motels.....	3-7
Regional Recreational Opportunities.....	3-7
Inventory Procedures.....	3-8
Status Report on Grant-Assisted Recreational Facilities.....	3-8

CHAPTER 4: DESCRIPTION OF PLANNING PROCESS.....	4-1
Schedule.....	4-1
Public Input.....	4-2
Public Input Session Results.....	4-3
Survey Results.....	4-5
Public Input Session Sign in Sheet.....	4-9
Public Input Agenda.....	4-12
Public Input Photos.....	4-13
Recreation Survey.....	4-14

CHAPTER 5: GOALS & OBJECTIVES/ACTION PLAN	5-1
Crawford County	5-1
Goals & Objectives.....	5-1
Capital Improvement Schedule.....	5-3
Rationale.....	5-5
Basis for Action.....	5-6
Grayling Recreation Authority.....	5-8
Goals & Objectives.....	5-8
Capital Improvement Schedule.....	5-9
Rationale.....	5-10
Basis for Action.....	5-10
Beaver Creek Township.....	5-11
Goals & Objectives.....	5-11
Capital Improvement Schedule.....	5-12
Rationale.....	5-12
Basis for Action.....	5-13
Grayling Township.....	5-14
Goals & Objectives.....	5-14
Capital Improvement Schedule.....	5-15
Rationale.....	5-15
Basis for Action.....	5-15
Lovells Township.....	5-16
Goals & Objectives.....	5-16
Capital Improvement Schedule.....	5-17
Rationale.....	5-17
Basis for Action.....	5-18
South Branch Township.....	5-19
Goals & Objectives.....	5-19
Capital Improvement Schedule.....	5-19
Rationale.....	5-20
Basis for Action.....	5-20

LIST OF MAPS

Map 1.1: Crawford County Location.....	1-1
Map 1.2: Crawford County Base Map.....	1-1
Map 1.3: Land Use.....	1-6
Map 1.4: Public Lands.....	1-7
Map 1.5: Zoning.....	1-8
Map 1.6: Soils Constraints.....	1-11
Map 1.7: Water Resource.....	1-16
Map 3.1: Recreational Facilities.....	3-9
Map 3.2: Recreational Trails.....	3-10

LIST OF TABLES

Table 1.1: Population Data for Crawford County & Municipalities.....	1-2
Table 1.2: Population by Age.....	1-4
Table 1.3: Occupation of Employed Population 16+ Years.....	1-5
Table 2.1: Crawford County Board of Commissioners.....	2-1
Table 2.2: Grayling Recreation Board of Directors.....	2-4
Table 2.3: Beaver Creek Elected Officials.....	2-7
Table 2.4: Beaver Creek Township Planning Commission.....	2-7
Table 2.5: Beaver Creek Township Zoning Board of Appeals.....	2-8
Table 2.6: Grayling Township Elected Officials.....	2-11
Table 2.7: Grayling Township Planning Commission.....	2-11
Table 2.8: Grayling Township Zoning Board of Appeals.....	2-11
Table 2.9: Lovells Township Elected Officials.....	2-16
Table 2.10: Lovells Township Planning Commission.....	2-16
Table 2.11: Lovells Township Zoning Board of Appeals.....	2-17
Table 2.12: South Branch Township Elected Officials.....	2-18
Table 2.13: South Branch Appointed Officials.....	2-18
Table 2.14: South Branch Township Planning Commission.....	2-18
Table 2.15: South Branch Township Zoning Board of Appeals.....	2-19
Table 3.1: Crawford County & Grayling Recreation Authority Recreational Facilities...	3-1
Table 3.2: Beaver Creek Township Recreational Facilities.....	3-2
Table 3.3: Grayling Township Recreational Facilities.....	3-2
Table 3.4: Lovells Township Recreational Facilities.....	3-2
Table 3.5: South Branch Township Recreational Facilities.....	3-2
Table 3.6: Other Recreational Facilities.....	3-3
Table 3.7: State & Federal Recreational Facilities in Crawford County.....	3-3
Table 3.8: Private Recreational Facilities.....	3-4
Table 3.9: Recreational Trails.....	3-4
Table 3.10: Boating/Fishing Access Sites.....	3-5
Table 3.11: Canoe Liveries.....	3-6
Table 4.1: Public Input Session Results.....	4-3
Table 5.1: Crawford County Capital Improvements Schedule.....	5-3

Table 5.2: GRA Capital Improvements Schedule.....5-9
 Table 5.3: Beaver Creek Capital Improvements Schedule.....5-12
 Table 5.4: Grayling Township Capital Improvements Schedule.....5-15
 Table 5.5: Lovells Township Capital Improvements Schedule.....5-17
 Table 5.6: South Branch Township Capital Improvements Schedule.....5-19

FIGURES

Figure 1.1: Glacial Landforms.....	1-10
------------------------------------	------

ATTACHMENTS

Attachment A: Grayling Recreation Authority Articles of Incorporation
Attachment B: Notice of Public Input Session
Attachment C: Notice of Recreation Plan Available for Public Review
Attachment D: Notice of Public Hearing
Attachment E: Minutes of Public Hearing for Plan Adoption
Attachment F: Resolutions of Adoption
Attachment G: Submittal Letters
Attachment H: Article from Input Session (5-08-08)
Attachment I: Article from August 28, 2008
Attachment J: Grayling Recreation Authority - Act 172 of 1913
Attachment K: Grayling Recreation Authority Articles of Incorporation

CHAPTER ONE: COMMUNITY DESCRIPTION

Regional Location

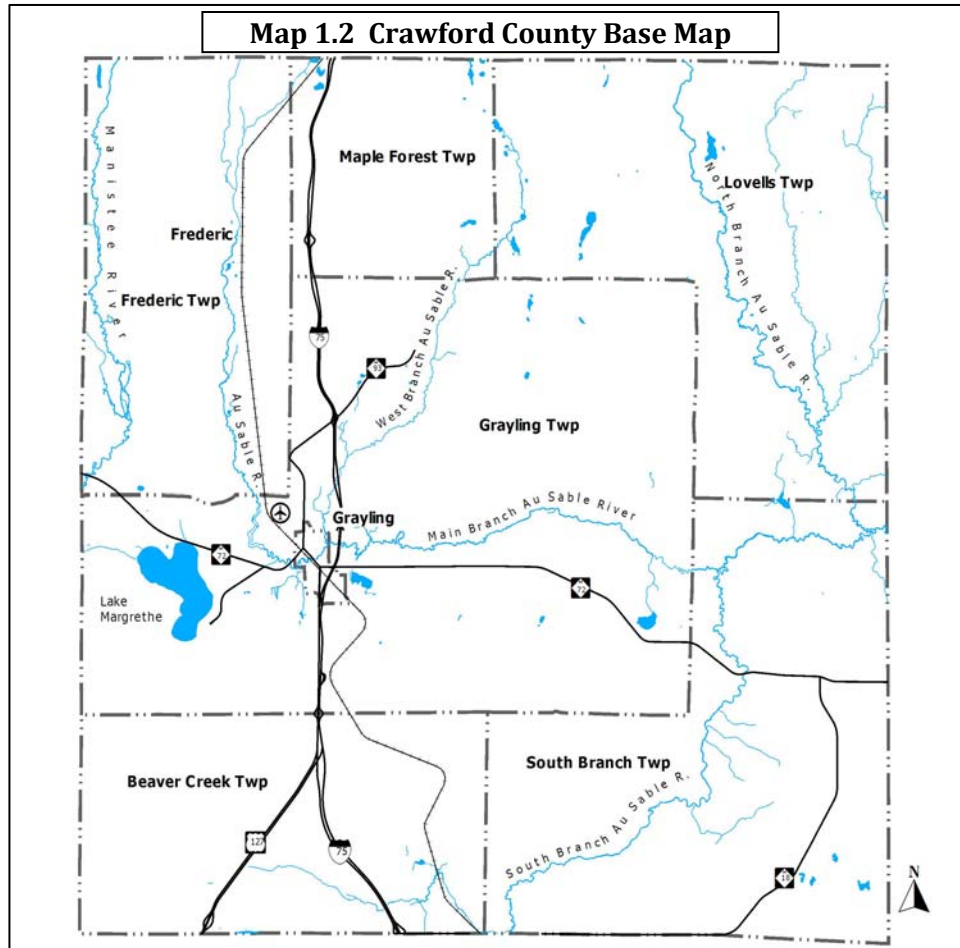
This recreation plan is being prepared for Crawford County and includes all aspects of recreation within the county.



Map 1.1

Crawford County is located in the north central Lower Peninsula of Michigan. The county is composed of six townships: Grayling Township, Frederic Township, Maple Forest Township, Lovells Township, South Branch Township, and Beaver Creek Township. Also located in Crawford County is the City of Grayling, which is the county seat.

Crawford County is approximately 50 miles from Lake Michigan and approximately 55 miles from Lake Huron. It is bordered on the east by Oscoda County, south by Roscommon County, the west by Kalkaska County, and on the north by Otsego County. Crawford County has a land area of 558 square miles and a population of 14,273. Its population density is 25.6 people per square mile.



Social Characteristics

Population

Crawford County's population is slowly growing and is predicted to continue to grow over the next several decades. Although its growth rate has not been as high as some neighboring counties, it is higher than the State's rate. A further examination of the county's statistics shows that, similar to most of the nation, Crawford County's population is aging. Over the past three decades, the county's age distribution continued to increase in percentage of those over 25 years of age, while shrinking in those under 25 years. Shifting population bases create new demands on community services. Communities with a larger elderly population need to concentrate more on plans for expanded health care and emergency services. More than half of the older Americans reported having a least one disability and over a third reported at least one severe disability.

Municipality	1990 Population	2000 Population	% Change '90-'00
Crawford County	12,260	14,273	16.4%
City of Grayling	1,944	1,952	0.4%
Beaver Creek Township	1,175	1,486	26.5%
Frederic Township	1,287	1,401	8.9%
Grayling Township	5,647	6,516	15.4%
Lovells Township	420	578	37.6%
Maple Forest Township	407	498	22.4%
South Branch Township	1,380	1,842	33.5%

Source: U.S. Bureau of the Census

Sex, Race and Ancestry

Crawford County has a very small minority population and that statistic has changed relatively little over the last several decades. A small increase in the minority population from 1990 to 2000 is mostly attributed to different reporting criteria in the 2000 Census. For the first time, respondents were given the opportunity to choose more than one race category.

Households

Over the past decade, the number of residential housing units in the county increased by 15.1 percent (1,315 units) and the population increased by 16.4 percent (2,013 persons). The ratio of 1 new home per 1.5 new residents reflects the trend toward fewer persons per household. Between 1990 and 2000, Crawford County's total number of persons per household decreased from 2.62 to 2.42 persons.

The percentage of owner-occupied housing units in Crawford County increased in 2000 from 80.3 percent to 82.8 percent. In all of the county's local units, except the

City of Grayling, at least 80 percent of the occupied housing units were owner occupied. Vacancy data is one measure of the availability of housing in a community. Sufficient housing stock, for both owner-occupied and renter-occupied, must be provided to accommodate an expanding population base.

Housing Occupancy

According to the Census, Crawford County's housing market vacancy rate was remarkably low in 1990 at 2.6 percent and even lower in 2000 at 1.7 percent. Throughout the county, owner and renter vacancy rates are fairly low with the exception of Maple Forest Township which had a high renter vacancy rate of 20.8 percent. The next highest vacancy rate was Lovells Township with a renter vacancy rate of 8.0 percent. Typical normal vacancy rates of owner-occupied housing are nationally about 5 percent. Crawford County's low percentage indicates a tight housing market and an inadequate supply of available units for new residents. This situation indicates that the demand for housing is not being met through the existing housing stock.

Housing Characteristics

As in many areas of northern Michigan, townships in Crawford County have a large percentage of seasonal housing units, particularly in Lovells Township where 68.5% (638 dwellings) are seasonal units. Other areas with high percentages of seasonal housing units are South Branch (52%), Maple Forest (49%) and Beaver Creek (43%). The City of Grayling has a very low percentage of seasonal housing units (1.2%). Seasonal units are often located on rivers and lakes and can vary from excellent to substandard. Many lots platted in the 1920's or 1930's are substandard in size, have private wells and use poor wastewater practices.

When analyzing the county's housing stock, it is important to look at the age of the housing units. Typically, after 30 years, homes are in need of upgrade, repair and/or replacement of major systems such as roofs, heating, plumbing and electrical. In Crawford County, 41.9 percent of all housing units were at least 30 years old and almost 20 percent of the housing units in the county that were built between 1970 and 1979 will be reaching 30 years old over the course of this decade. Nearly a quarter of the housing units in the county were constructed before 1959.

Census data from 2000 shows that the large majority of homes in Crawford County (77.2%) are single family detached stick built structures. Mobile homes are a popular housing option in the county and make up 14.8 percent of the housing units in the County. Multi-family dwellings make up 4.0 percent of the housing units and the remainder of the housing units (3.6%) is other housing options such as a boat, RV, or van.

Age

The 2000 census data shows that 46.6 percent of Crawford County's total population was 45 years old or older, up from 36.0 percent in 1990 (**Table 1.2**). Age groups that

had declined as a percentage of the total population from 1990 to 2000 were the 25 to 44 age group (-3.0%), the 18-24 age group (-1.9%) and the under 5 age group (-1.9%).

Age	1990	% of Total Population	2000	% of Total Population
Under 5	901	7.3	777	5.4
5-17	2,300	18.8	2,720	19.1
18-24	1,007	8.2	900	6.3
25-44	3,633	29.6	3,798	26.6
45-64	2,592	21.1	3,706	30.0
65+	1,827	14.9	2,372	16.6
Median Age	34.7		40.6	
Source: U.S. Bureau of the Census				

From 1990 to 2000, the number of individuals in all age groups increased with the exception of the under 5 age group which had 124 fewer persons (-13.8%) and the 18 to 24 age group which had 107 fewer persons (-10.6%). The 45 to 64 age group increased by 1,114 persons (43%), the over 65 group increased by 545 persons (30%), the 5-17 age group increased by 420 persons (8.3%), and the 25-44 age group increased by 165 persons (4.5%).

The median age of residents in Crawford County increased 5.9 years to 40.6 during the period 1990-2000. This is a larger increase and is 5.1 years older than the median age for the State, which increased from 32.5 to 35.5 years. As the population continues to age and the population of persons in the childbearing years continues to decrease, it can be expected that the median age will continue to increase as less children are born into the community.

School Enrollment and Educational Attainment

Crawford County is within the Crawford AuSable School District located at 1135 North Old 27, Grayling, MI 49738, Phone: (989) 344-3500. Schools within this District include:

Grayling Elementary School
1000 Michigan Ave.
Grayling, MI 49738

Adult Learning Center
6470 Manistee Street
Frederic, MI 49733

Grayling High School
1135 N. Old-27
Grayling, MI 49738

AuSable Primary School
306 Plum Street
Grayling, MI 49738

Grayling Middle School
500 Spruce Street
Grayling, MI 49738

Since 1990, Crawford County has made increases in educational attainment. The number of people 25 and older who had a high school diploma or higher increased from 73.6 percent in 1990 to 83.1 percent in 2000. Most of the gain can be attributed

to people taking some college classes but not obtaining a degree as this group had a 39.5 percent increase. There were also significant increases in the number and percent of persons with associates, bachelors, graduate or professional degrees.

Other encouraging news shown by the 2000 census was the marked decrease in the numbers of persons who only completed 9th to 12th grades and did not achieve a high school diploma and those who had less than a 9th grade attainment.

Labor Force and Employment Trends

Crawford County's economy improved significantly from 1990 - 2000. However, the county's unemployment rate is again increasing after a period of decline from 1994 to 2000. The unemployment rate peaked in 1994 at 9.9 percent and declined steadily until 1998. The rate remained more or less steady at about 6 percent until 2000. Between 2000 and 2002 the rate rose 2 percent, peaking at 8 percent unemployment rate. As was the case with the State and most of the Country, a slowing national economy exacerbated by the terrorist attack of September 11, 2001, were the primary causes for Crawford County's 1.1 and 1.2 percent rise in the unemployment rate for this time period. These increases were the largest in nine years, and unemployment rose to its highest level since 1995. Following this period, the unemployment rate gradually fell to 6.7 percent by the year 2005. Current data indicates that the jobless rate increased to nearly 8% by April 2006. Crawford County's unemployment rate has historically been 3 to 4 points higher than the State and has mirrored the State's trend over the past 10 years.

During the same decade, service sector employment increased by 11.1 percent (125 jobs) while government sector employment increased by 7.7 percent (75 jobs). Employment in the retail sector and mining & construction sector declined when comparing 1991 to 2000. The number of jobs in the county's retail sector fell by 175 (10.6%) making it the only county in the region to loose retail employment during the period. The county's mining & construction sector lost 75 jobs (33.3%). Employment in the county's mining and construction sectors was the same when comparing 1991 to 2000.

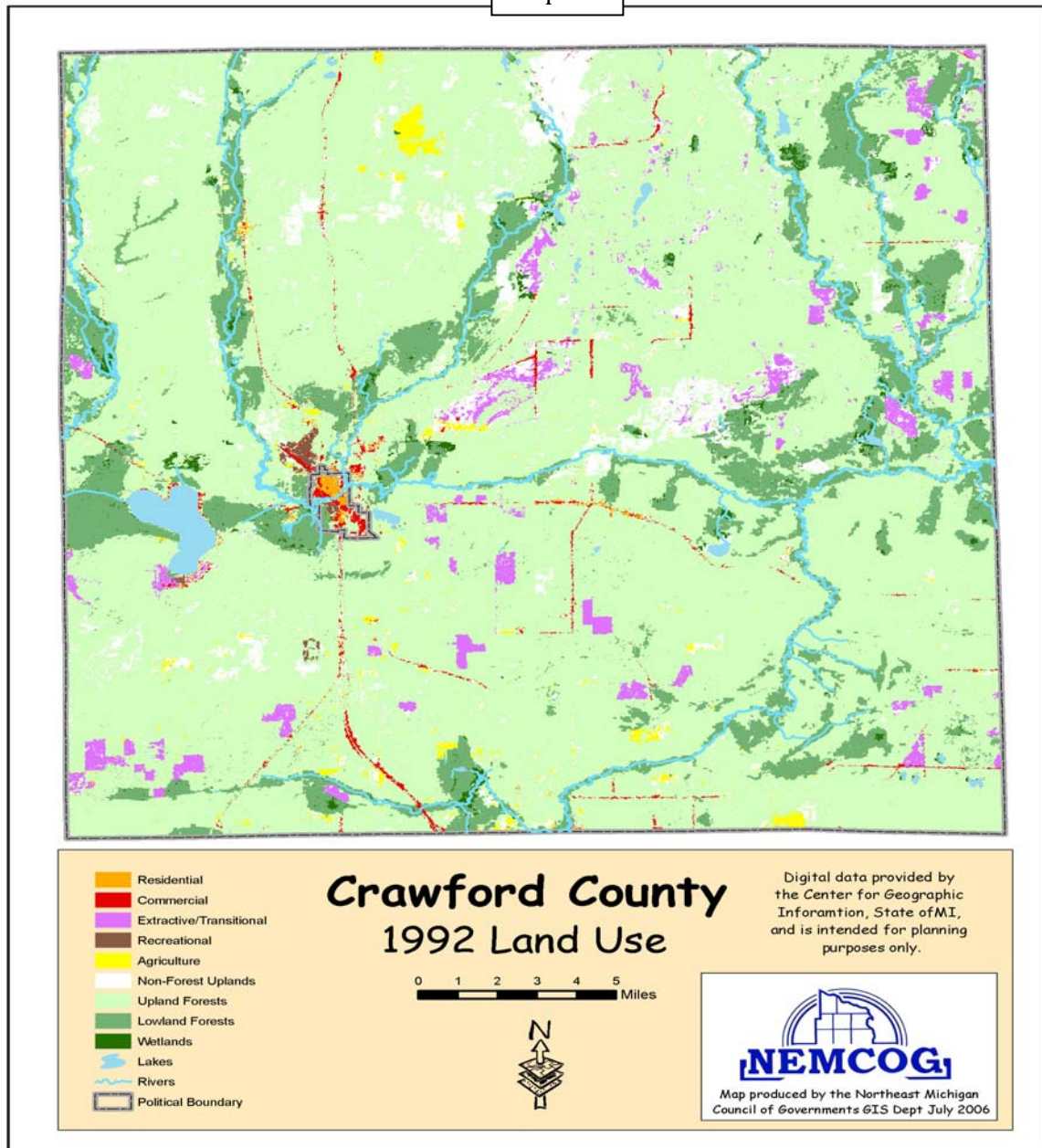
Table 1.3: Occupation of Employed Population 16+ Years	
Management, Professions & Related Occupations	24%
Service Organizations	21%
Sales & Office Occupations	25%
Farming, Fishing & Forestry Occupations	1%
Construction, Extraction & Maintenance	11%
Production, Transportation & Material Moving	18%
<i>Source: Bureau of Census, 2000</i>	

Physical Characteristics

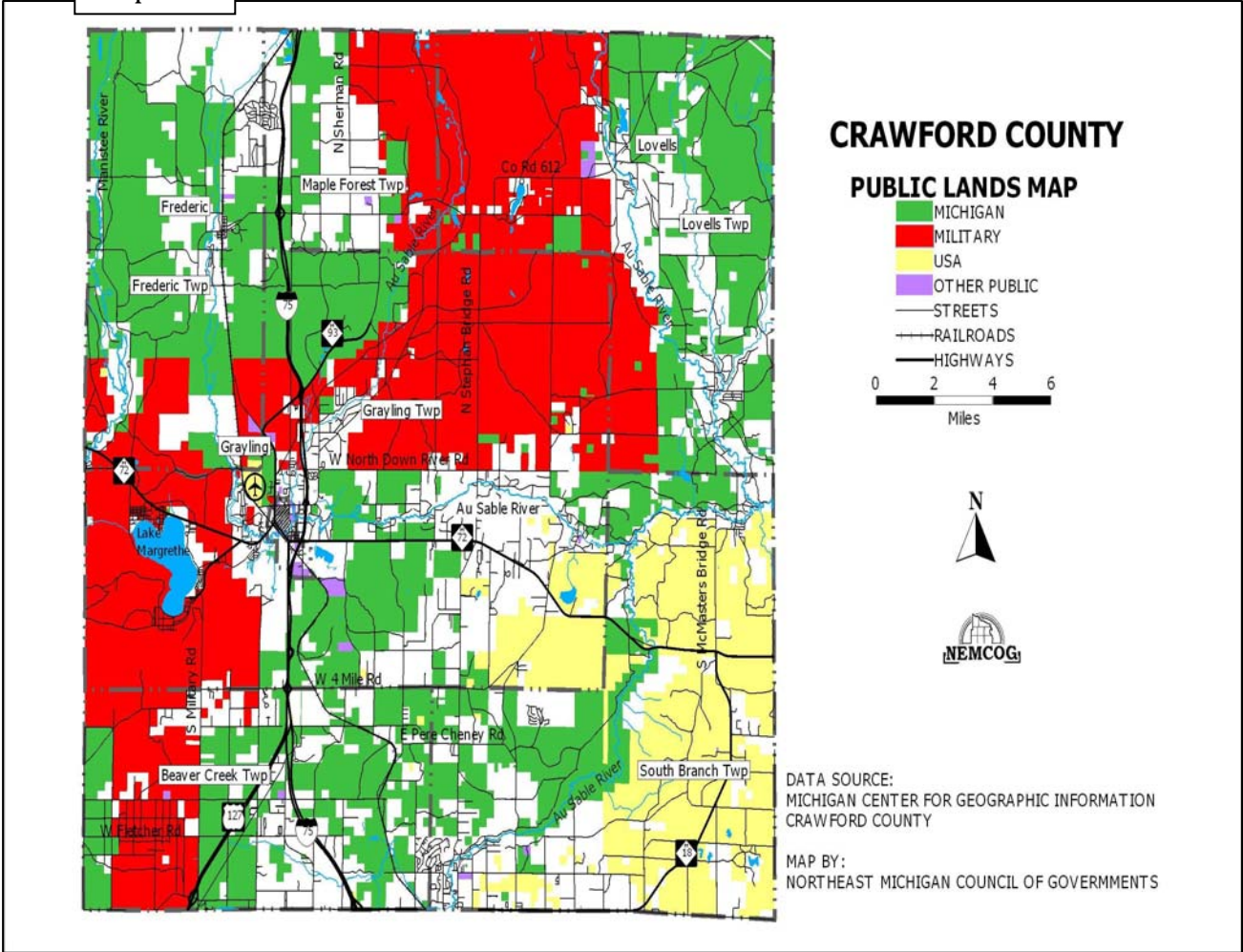
Land Use/Cover Patterns

As seen in Map 1.3, generally communities place public lands into low intensity development categories such as forest recreation, resource conservation or public lands. Most townships have identified select areas of public land for private development such as residential, commercial or industrial. Grayling Township has identified the largest areas of public lands for private development mostly around the 4 Mile Road interchange and between 4 mile and M-72 as shown in Map 1.4.

Map 1.3



Map 1.4



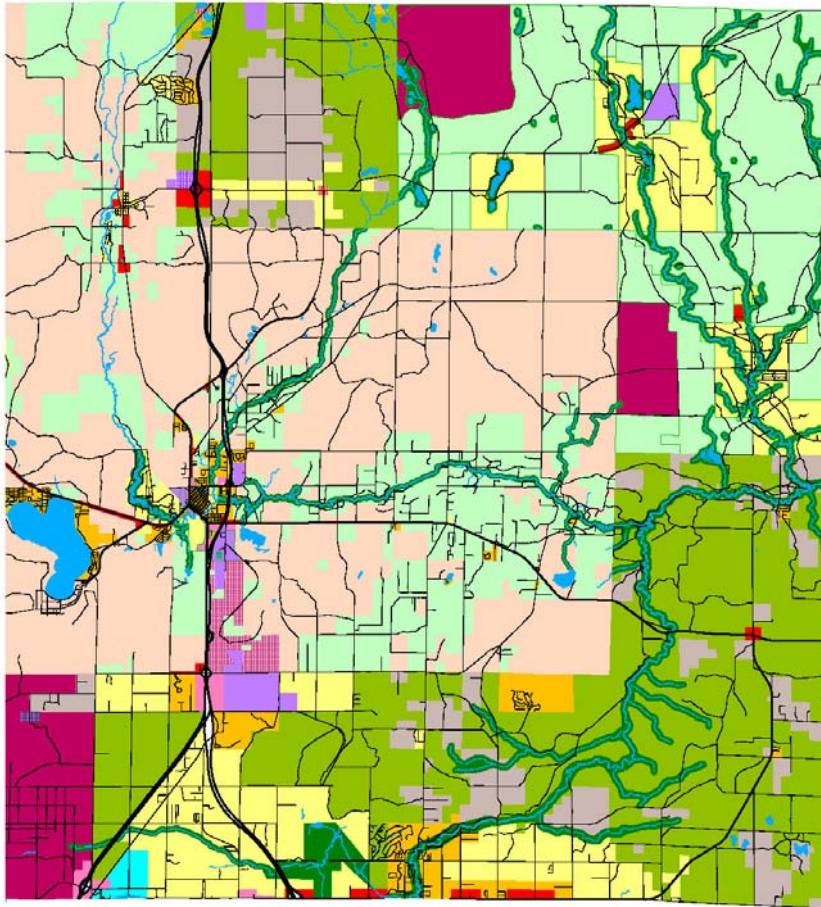
Zoning

In the spring of 2008, the County rescinded its zoning ordinance. By March of 2008, South Branch Township was the last township to adopt its own ordinance; making zoning administered at the local level county-wide. All of the communities recognize the natural rivers act for the Au Sable River and in the case of Frederic Township the Upper Manistee River.

On the following page, **Map 1.5** is a composite zoning map for Crawford County. Areas colored yellow and orange are zoned for residential, areas colored red are commercial and purple areas are zoned for industrial.

Map 1.5

CRAWFORD COUNTY COMPOSITE COMMUNITY ZONING MAP



Topography and Soils

Most of the county is nearly level or gently rolling. Local differences in elevation are slight, in a few places exceeding 100 feet, although the hills and plateau-like ridges appear to rise above adjacent sand plains when viewed from a distance. Slopes of hilly land are both long and expansive or, where the relief is choppy, smooth and rounded. There are no steep slopes except along watercourses.

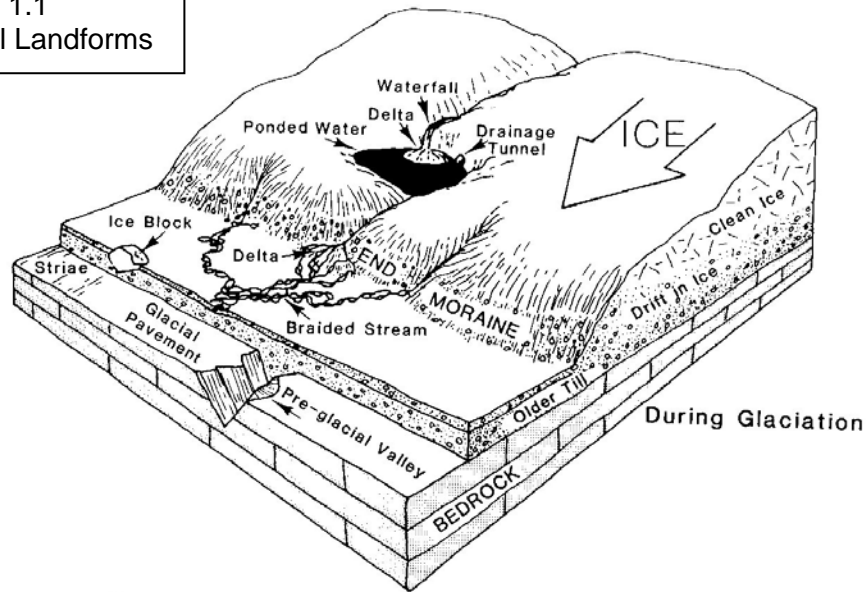
The northern part of the county consists of three broad highland plateaus, having a general north-south direction, three complementary broad sand valleys, and a wide sandy plain on the east. The central part, from eastern to western boundaries, is a wide level sand plain through which the AuSable River and its tributaries have cut valleys. Several detached swells or ridges, irregular in outline but having general east to west trends, characterize the southern part of the county. Here the general relief is gently rolling or moderately hilly. Level sand plain and swamps intervene between masses of higher land. The highest elevation, ranging from 1,300 to 1,480 feet above sea level, can be found on kame moraines in the southeastern parts of the county. The lowest elevation of 1,010 feet above sea level, noted on USGS quadrangle maps, is located in the eastern edge of the County where the main branch of the Au Sable River flows into Oscoda County.

The soils of Crawford County are generally sandy with low fertility and low moisture-holding capacity. Few loamy soils are found in the northwest portion of the county. Portions of the county have building limitations due to poor filtration of septic effluents. The two predominant soil associations in Crawford County are: *Grayling-Rubicon* (nearly level to undulating, well drained sandy soils on outwash plains); and *Grayling-Graycalm-Montcalm* (rolling to hilly, well-drained sandy soils, on uplands). Found in the northwest portion of the county are significant beds of a third association, *Kalkaska-Blue Lake* (sloping to steep, well-drained sandy soils, on the side of ridges and escarpment-like features enclosing upland valleys).

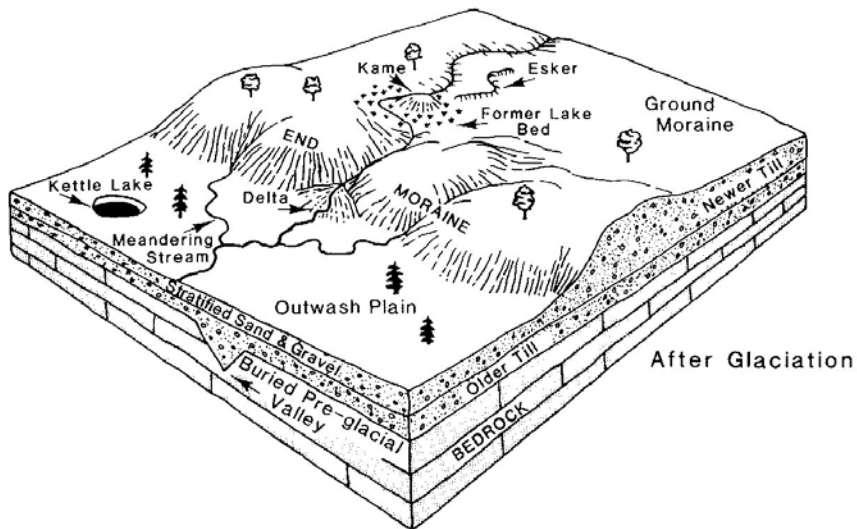
When planning for types and intensity of land uses, soil types and slopes are two important factors that determine the carrying capacity of land. The construction of roads, buildings and septic systems on steeply sloped areas or areas with organic and hydric soils require special design considerations. In addition, costs for developing these sensitive areas are greater than in less constrained parts of the landscape. If developed improperly, the impacts to natural resources can be far reaching.

The Natural Resource Conservation Service completed a detailed soil survey of Crawford County. A digital or computerized version of the soil survey maps was acquired from the Michigan Department of Natural Resources, MIRIS program. Using information contained within the published soil survey book, a series of maps are presented that depict hydric soils, steep slopes, soils with building limitations and soils with septic system limitations.

Figure 1.1
Glacial Landforms



Features originating at a glacier front occur in a definite order.



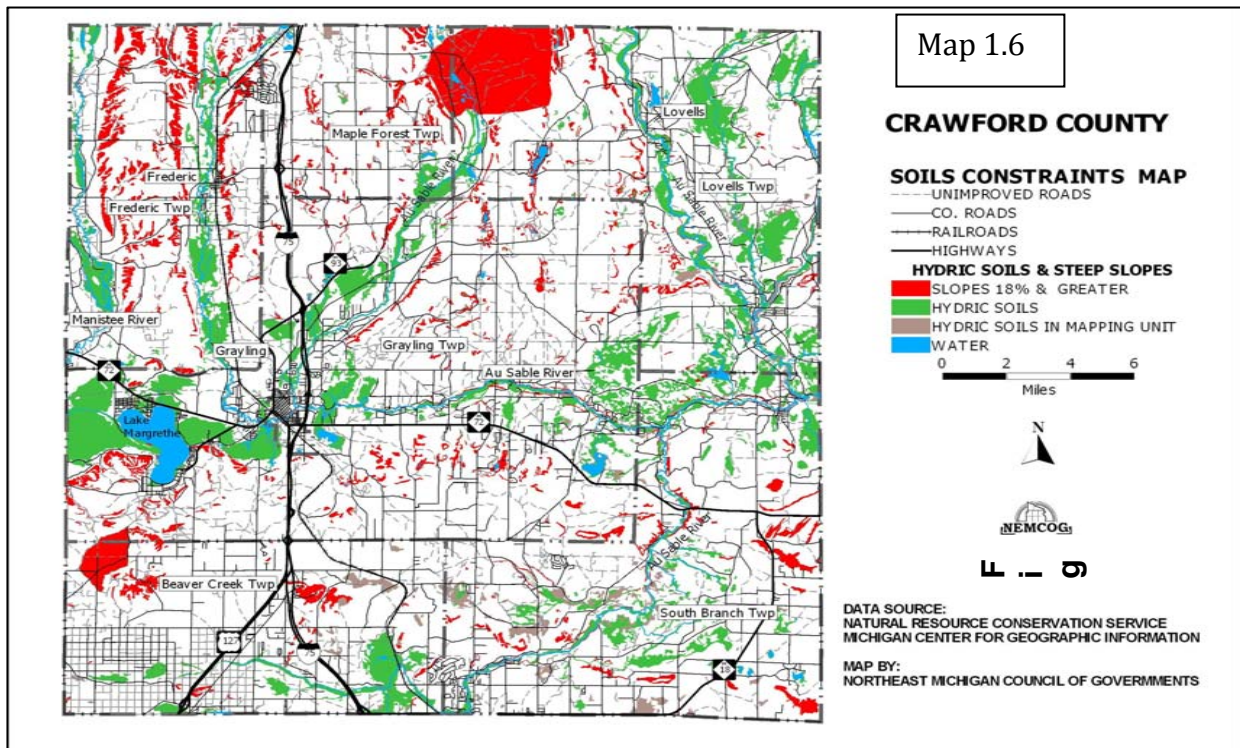
Landforms of continental glaciation are unmistakable.

Hydric Soils and Steeply Sloped Areas

Less than ten percent of the County is mapped as hydric soils with a high potential for wetlands. The hydric soils are mainly located adjacent to streams and lakes. The largest concentrations are found in the central portions and northern portions of the community. Note the green areas or hydric soils are typically drained by creeks and

streams that in turn empty in the major rivers. This connectivity of riparian wetlands and surface water features can be seen throughout the landscape.

Hills and steeply rolling terrain may provide opportunities for spectacular views of the landscape. However, steeply sloped sites have severe building constraints, and are more difficult and costly to develop. Maintenance costs tend to be higher on steeply sloped terrain. Special design standards such as erosion control measures, limiting size of disturbed areas, retaining natural vegetation, revegetation, slope stabilization and on-site retention of water run-off from impervious surfaces would all serve to minimize resource impacts. According to information presented in the Crawford County Soil Survey areas with slopes 18 percent and greater are minimal. Of greatest concern are steeply sloping hillsides adjacent to waterways. Steeply sloped areas are depicted in red on **Map 1.6**. Note the large area mapped as steep slopes in the northern part of the county. This anomaly is related to the bombing range of Camp Grayling.



Water Resource, Fish and Wildlife

Groundwater can be found in the deep glacial deposits of sand and gravel throughout the county. The availability of groundwater appears consistently good, ranging from 400 to 500 gallons per minute from wells ten inches in diameter. Ground water provides the only source of potable water for the county. The deep sand and gravel underlying the county, the aquifer is quite vulnerable to contamination from surface and subsurface discharges.

Crawford County has an abundance of lakes and streams (**Map 1.7**). The county has a total of 53 lakes that are one acre or larger. The largest body of water in the county is Lake Margrethe, with a surface area of 1,928 acres, an average depth of 16 feet and a maximum depth of 65 feet. Seven lakes are over 100 acres. The large majority of the lakes are less than 50 acres in size. The county is predominantly within the Au Sable watershed. The Manistee River drains the western portion of the county. Almost all of the lakes and streams provide good fishing and many tourists come to the county to fish. The lake is at the headwaters of the Manistee River watershed and is a popular recreational and tourist area in the county. Other significant lakes in the county include Shupac Lake, Shellebarger Lake and Jones Lakes. Smaller lakes are quite numerous.

The Au Sable River is the largest river in the county at nearly 200 miles in length. The gentle slope of the terrain and the porous glacial outwash plains, consisting mostly of the sandy porous glacial outwash plains, consisting mostly of the sandy porous soils type that encourages infiltration of the precipitation delivered to the basin, assures the river system a steady contribution of cold groundwater throughout the year. This is a key characteristic of the river. The generous flow of cold, clear water offers some of the most productive and fishable trout waters in the world. The Au Sable is rated as a “Blue-Ribbon” trout stream and is designated as a Michigan Natural River. The lakes and streams in the county are popular tourist attractions and are heavily used in the summer and winter months. Canoeing and fishing are very popular on the Au Sable River, with swimming and boating being popular on the larger lakes.

The predominance of forested land and surface water makes Crawford County the home to many species of fish and wildlife. The recreational opportunities linked with these resources are many. With over 3,000 acres of lakes and streams, the County has an abundance and variety of fish habitat. Many of the streams in Crawford County are suitable for trout fishing. Three branches of the AuSable River are designated Blue Ribbon Trout Streams. Brook, rainbow, and brown are established singly or in combination in these streams. Many of the deeper lakes in the County also contain trout, including Glory, Bright, Sandhill, and Kneff Lake. Other lakes in the County support populations of rock bass, yellow perch, blue gills, small mouth bass, large mouth bass, tiger muskie, northern pike, and walleye. Lake Margarethe, the largest lake in the County, has a wide variety of pan fish and sports fish. In 2006, the Department of Natural Resources established guidelines to develop a process to create quality fishing lakes by designation. Based on the newly developed criteria, Jones Lake has been placed into the ‘Quality Lakes’ designation.

Wildlife abundant in the County includes deer, rabbit, grouse and woodcock. Bear, coyote, bobcat, elk and turkey have small to moderate populations that are growing. Wildlife is a resource that brings in hunters and tourists. October and November bring thousands of hunters to the county for small game hunting, bear and bow season (deer), peaking sharply in mid-November with the opening day of deer (rifle) season.

Unfortunately, large deer populations, combined with indiscriminate feeding practices, were contributing factors to the spread of Bovine Tuberculosis (TB) across northern Michigan. TB is a serious disease caused by bacteria attacking the respiratory system. There are three main types of TB - human, avian, and bovine. Human TB is rarely transmitted to non-humans, and avian TB is typically restricted to birds. Bovine TB - also known as 'cattle TB' is the most infectious of the three, and is capable of infecting most mammals.

In addition to the 509 infected deer reported throughout the State, Michigan has found several other species to be infected with the disease, including four elk, and several coyotes, raccoons, black bear, bobcats, red fox and opossums. The disease has been confirmed in 33 cattle herds to date, but none during the last testing season. Two humans and one domestic house cat have also been diagnosed with the same unique strain of TB found in deer and cattle.

While 96% of the Bovine TB infected deer came from five counties in northern Michigan (Alpena, Alcona, Montmorency, Oscoda and Presque Isle), the impact of this disease has been nonetheless felt in Crawford County. As of the 2005 testing season, four deer and one coyote have tested positive for TB in the County.

The effort to eradicate the disease has led to an aggressive TB testing campaign and the creation of a 42 county surveillance area and a seven county Deer Management Unit (DMU) that is subject to special regulations. Hunters in the surveillance area are asked to submit deer heads for testing, in DMU 452 (the core area covering portions of the four counties directly east and northeast of Crawford County) testing was mandatory until 2002, but testing is now on a voluntary basis. Crawford County is included in the seven County DMU area. Efforts to eradicate the disease has led to changes in deer feeding rules, quota increases, extension of the number of hunting days and the banning of new deer or elk farms. As the eradication effort continues, more changes in hunting and feeding rules can be expected.

Climate

The climate is yet another reason why people are drawn to the area. Typical of northern Michigan, the distinct four seasons offer an ever-changing landscape. Long snowy, cold winters; and moderately warm summers are separated by a cool, green spring and a cool colorful fall. Located in the north central part of the northern lower peninsula, the County is approximately 50 miles inland from Lake Michigan and 55 miles inland from Lake Huron. Given this geographic location, with the exception of lake effect snowfall, the weather is not significantly influenced by the lake moderating effect of both Great Lakes.

Based on the 1971-2000 period, the average date of the last freezing temperature in the spring was May 30, while the average date of the first freezing temperature in the fall was September 17. The freeze-free period, or growing season, averaged 110 days annually.

In the summer, precipitation comes mainly in the form of afternoon showers and thundershowers. Most precipitation occurs in the months of April-September, which received an average of 20.76 inches or 62 percent of the average annual total for the 1971-2000 period. During this same period the average wettest month was September that averaged 4.01 inches, while the average driest month was February which averaged 1.27 inches. The average seasonal snowfall was 104.7 inches. During the 1971–2000 period, 123 days per season averaged one inch or more of snow on the ground, but varied greatly from season to season. The greatest one-day precipitation total was 5.02 inches, recorded August 8-9, 1965; greatest monthly total, 12.51 inches, recorded September 1986. The least monthly total, 0.00 inches, was recorded April 1889. Soil moisture replenishment during the fall and winter months plays an important role in the success of agriculture for this area. While drought occurs periodically, the Palmer Drought Index indicated drought conditions reached extreme severity only two percent of the time.

Utility Services

Due to the large amount of public land and internal parcels (parcels in the center of a section that does not abut a public road), utility services are lacking in some areas of the County. Costs of providing telephone service to these isolated residences can be prohibitively high. Since these landowners must pay the cost of running the lines, some have chosen not to bear the expense, instead relying on cellular telephones.

Gas and Electricity Providers—MichCon provides natural gas service for the County; several sections in the east portion do not have natural gas service. Consumer Energy and Great Lakes Energy provide electricity to developed areas within the County. Large portions of South Branch, Lovells and Beaver Creek Townships have no electric service. With the exceptions of Frederic Township and the military base in Grayling Township, there is little three-phase service in the County. Three-phase power is needed to support some types of commercial and industrial activities, particularly in businesses that operate heavy machinery or equipment.

Telephone and Internet Service—Verizon and AT&T provide telephone service to the largest geographic area of the County. Businesses within three miles of the City of Grayling or of Frederic also have access to DSL Internet service through EPCS, an Otsego County Internet Service Provider. (This service is only available through Verizon telephone lines). Charter Communications provides cable, high-speed internet and telephone packages in parts of Crawford County.

Transportation Systems

Lumbering was responsible for Crawford County's early growth and development. Grayling, during and after the lumber boom, was an important railroad center and was the junction of the Michigan Central, Manistee and Northwestern Railroads. The Grayling area and points north and south continue to be served today by Lakestate Railroad. The I-75 expressway gives the county convenient accessibility via motor vehicles from the north and south. The primary east-west artery is M-72, which connects the City of Grayling with Traverse City and Lake Michigan to the west and

Harrisville and Lake Huron to the east. In addition, Grayling is serviced by a private airport facility.

Media


Newspaper coverage is provided by the *Crawford County Avalanche*, located in Grayling. This paper provides local, regional, state and national news to the residents of the county, as well as features of local interest. Both the *Detroit News* and *The Detroit Free Press* are also available. Local radio stations are, WGRY 100.3 FM or 1230 AM and WQON. Locals can listen to many radio stations from surrounding counties.

CRAWFORD COUNTY

WATER RESOURCE MAP

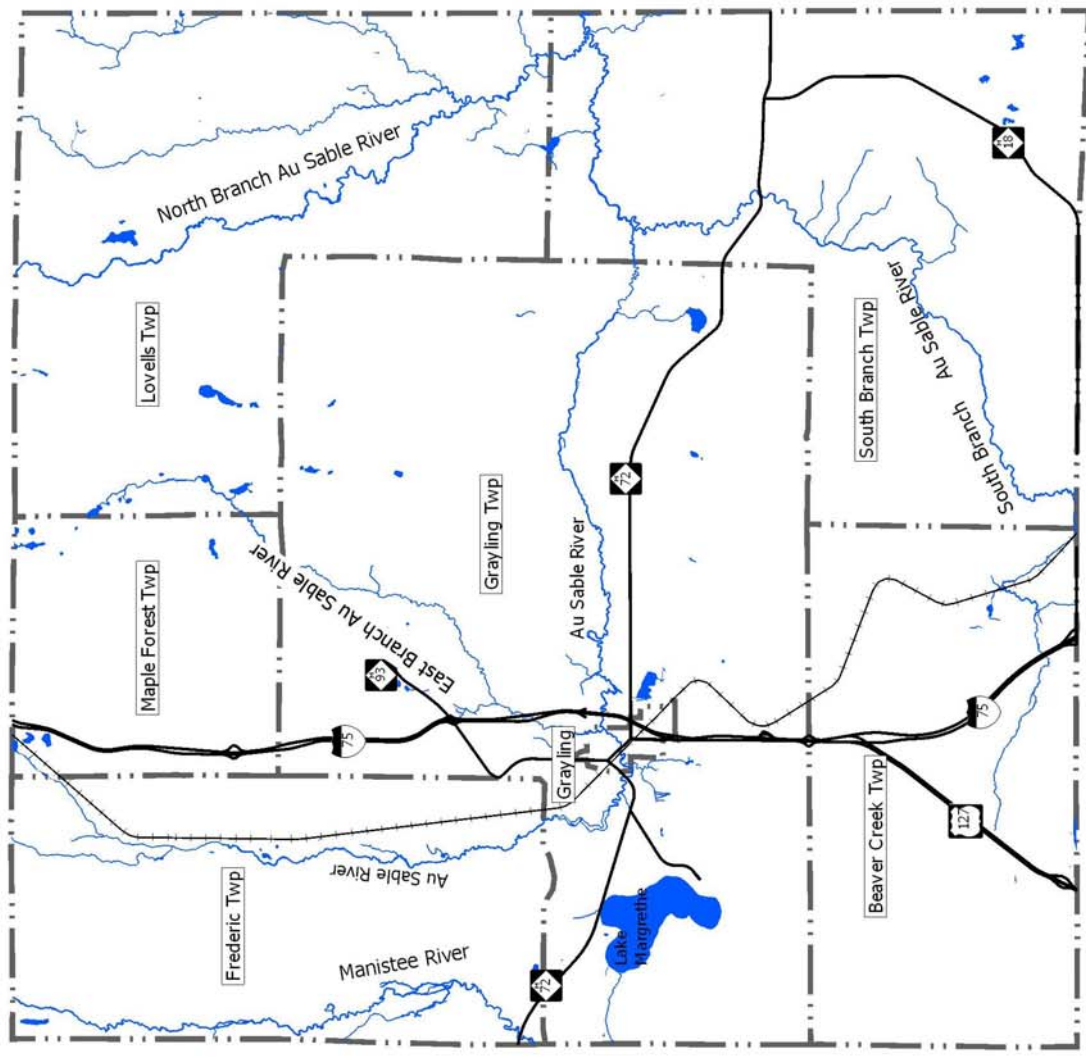
WATER FEATURES
 RAILROADS
 HIGHWAYS

Miles
 0 2 4 6




DATA SOURCE:
 MICHIGAN CENTER FOR GEOGRAPHIC INFORMATION
 MAP BY:
 NORTHEAST MICHIGAN COUNCIL OF GOVERNMENTS

Map 1.7



CHAPTER TWO: ADMINISTRATIVE STRUCTURE

Crawford County

Standard Operational Procedures

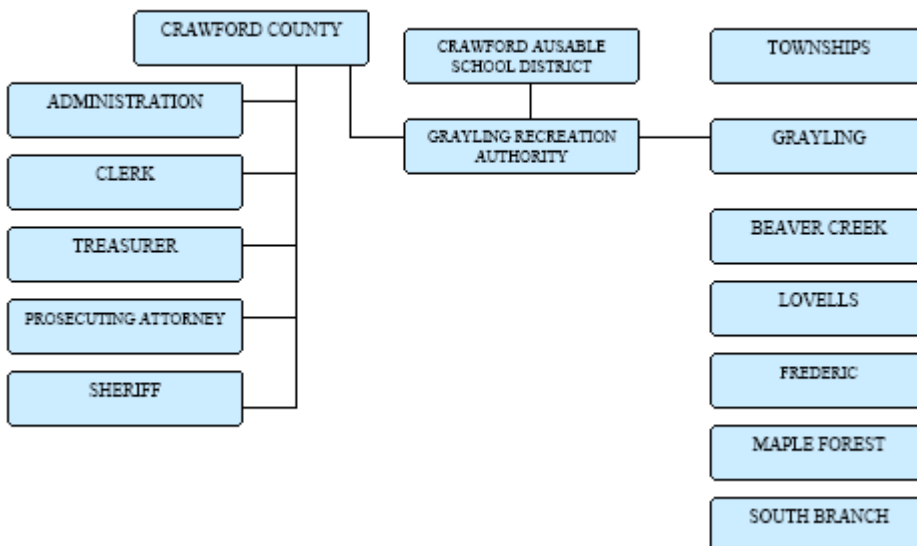
Crawford County Board of Commissioners operates under an administrative structure consisting of a Chair, Vice-Chair and board members. These positions are chosen by qualified voters of the county in at-large elections by districts held every other November. Bylaws adopted by the County determine the order of business and method of conducting regular county business. For most issues that require a vote for determination, a simply majority of commissioners present is required.

The county does have a recreational authority – the Grayling Recreation Authority (GRA). The Grayling Recreation Authority was created by local units of Crawford County government to facilitate parks and recreation services in Crawford County, to operate the Hanson Hills Recreation Area and the Grayling Fish Hatchery.

Dave Stephenson	Chair
Terry Beardslee	Vice-Chair
Kathy Rogers	Commissioner
Scott Hanson	Commissioner
Shelley Pinkelman	Commissioner
Mike Lange	Commissioner
Rick Anderson	Commissioner

Crawford County Organizational Chart

Organization Structure



Parks & Recreation Staff

The County does not employ any parks and recreation staff. Duties related to recreation properties are assigned to existing staff.

Crawford County Current Year Budget

07/17/2008 REVENUE & EXPENDITURE REPORT FOR COUNTY OF CRAWFORD				
FUND 101 GENERAL FUND				
	Month Ended 09/30/2008	2006-07 YEAR-TO- DATE	2007-08 AMENDED BUDGET	YEAR-TO- DATE THRU 09/30/08
DEPT	DESCRIPTION	THRU 09/30/07		
Revenues				
	125 - REVENUE SHARING	115,000.00	61,500.00	0.00
	131 - Circuit Court	195,441.39	195,904.00	155,823.49
	136 - District Court	291,434.19	307,937.00	213,530.88
	148 - Probate Court	187,919.10	186,470.00	135,882.45
	191 - Elections	2,353.56	4,200.00	15,286.65
	215 - Clerk	243,048.33	243,000.00	185,644.37
	229 - Prosecuting Attorney	92,929.97	55,250.00	36,887.37
	231 - Crime Victim Program	47,629.00	38,700.00	8,697.50
	253 - Treasurer	108,472.59	83,000.00	59,977.74
	254 - General Sources Treasurer	3,503,346.97	3,466,139.00	25,525.08
	255 - State and Fed Entitlements	272,717.69	276,373.00	85,201.55
	258 - Data Processing	10,275.19	10,500.00	8,473.31
	265 - Building and Grounds	46,815.00	32,100.00	45.00
	301 - Sheriff	199,599.15	152,970.00	147,385.96
	331 - Marine Patrol	6,000.00	6,000.00	7,500.00
	332 - Snowmobile Patrol	0.00	16,500.00	0.00
	336 - Secondary Road Patrol	50,922.00	55,000.00	19,589.00
	351 - County Jail	47,448.39	39,000.00	44,030.87
	426 - Emergency Preparedness	8,168.50	14,100.00	1,668.71
	430 - Animal Control	24,079.00	25,000.00	24,312.00
	851 - Insurance	20,554.01	0.00	951.99
	896 - Other Activities	100,954.24	2,500.00	525.95
	Total Revenues	5,575,108.27	5,272,143.00	1,176,939.87
Expenditures				
	101 - Board of Commissioners	125,365.26	139,511.07	105,544.09
	130 - Trial Court	916,051.05	941,879.72	623,813.93
	137 - Court Appointed Attorney	100,964.50	106,500.00	107,670.71
	147 - Jury Commission	3,225.00	1,500.00	1,330.00
	191 - Elections	14,275.16	16,000.00	15,605.10

210 - Corporate Counsel	20,690.76	9,000.00	12,637.21
215 - Clerk	197,937.78	227,084.11	170,226.73
223 - Controller	113,596.12	122,715.95	91,691.73
225 - Equalization	173,038.08	194,017.65	147,585.97
229 - Prosecuting Attorney	342,982.22	339,010.60	260,411.19
230 - COOP Reimbursement Program	3,391.14	3,400.00	976.36
231 - Crime Victim Program	38,616.73	38,700.00	29,797.28
233 - Purchasing	23,753.38	36,500.00	51,615.34
253 - Treasurer	145,835.85	148,771.15	104,548.52
258 - Data Processing	46,690.08	49,243.70	50,571.38
261 - Building Authority	105.00	0.00	105.00
265 - Building and Grounds	192,740.51	168,008.65	141,121.10
275 - Drain Commission	616.25	750.00	138.75
280 - Conservation	300.00	0.00	0.00
301 - Sheriff	979,920.38	1,004,407.90	775,807.31
331 - Marine Patrol	26,988.51	23,000.00	9,625.74
332 - Snowmobile Patrol	17,969.66	18,000.00	18,227.49
333 - BAILIFF EXPENSES	14,698.07	1,019.48	10,941.36
336 - Secondary Road Patrol	76,245.06	84,769.25	62,717.85
337 - SEASONAL TRAFFIC SAFETY	13,127.26	13,774.75	2,168.51
351 - County Jail	888,823.18	947,298.10	755,897.30
353 - Inmate Transportation	9,096.42	5,282.50	7,378.53
355 - ORV Grant	9,329.36	10,470.00	0.00
426 - Emergency Preparedness	26,963.16	33,252.56	20,674.62
430 - Animal Control	48,673.33	48,841.96	39,632.12
601 - Health and Welfare	135,911.40	136,773.00	80,999.97
605 - Contagious Disease	817.04	500.00	219.73
631 - Substance Abuse	40,777.50	38,548.00	16,397.00
648 - Medical Examiner	41,359.14	40,500.00	11,628.89
681 - Veteran's Burials	9,846.20	8,500.00	8,639.60
850 - Fringe Benefits	117,887.18	6,000.00	(78,351.29)
851 - Insurance	74,827.00	86,000.00	69,278.00
899 - Tax Tribunal Refunds	5,295.21	0.00	20,709.13
901 - Capital Outlay	13,301.33	7,112.90	14,456.08
965 - Operating Transfers Out	328,350.10	215,500.00	29,865.00
Total Expenditures	5,340,381.36	5,272,143.00	3,792,303.33

Grayling Recreation Authority

Standard Operational Procedures

The Grayling Recreation Authority (GRA) was created by the local units of Crawford County to address the recreational needs of the county. This body's primary function is to facilitate parks and recreation services in Crawford County and to operate Hanson Hills Recreation Area and Winter Sports Park, and the Grayling Fish Hatchery. Hanson

Hills has the unique distinction of being a State legislated recreational facility, created under P.A. 156 of 1917. The property is located in Grayling Township and is owned by the State of Michigan Department of Military Affairs. The lease to the Hanson Hills Recreation Area is renewed periodically with joint signatures from GRA and the Michigan National Guard. The property is leased to the Grayling Recreation Authority based on a renewable twenty (20) year lease. The current lease expires in 2026. The GRA is governed by a Board of Directors made up of appointed representatives from the County, Grayling Township and the Crawford AuSable School Board and appointed at-large members. The three at-large members are selected and approved by a majority vote of the six appointed members. The term length for at-large members is three years. Term lengths for the appointed members are determined by the appointing body.

Name	Title	Appointed By
Cris Jones	Chair	Grayling Township
Brad Wagner	Vice-Chair	Crawford AuSable School District
Pauline Petrosky	Treasurer	Crawford AuSable School District
Cari Oppermann	Secretary	At-large member
John Haven		At-large member
Jim Pickell		Crawford County
Mike Lange		Crawford County
Brad Summers		Grayling Township
Dave Jansen		At-large member

Funding for the GRA Budget

The GRA is currently funded by a county-wide millage. Apart from millage funds, other possible funding sources for recreational improvements in the county exist in grant opportunities with agencies such as the Michigan Department of Natural Resources, private foundations, community service organizations and community fund-raising groups.

Parks & Recreation Staff

The GRA has full-time staff for administration, operation, service and maintenance of the Hanson Hills Recreation Area and Grayling Fish Hatcheries facilities.

Current Year and Projected Annual GRA Budget

Grayling Recreation Authority	
BUDGET 2007/2008	

	2007-2008
INCOME	AMENDED BUDGET
BEGINNING FUND BALANCE	\$76,012.00
MILLAGE INCOME	\$267,962.00
MISCELLANEOUS INCOME	\$29,708.00
WINTER INCOME	\$ 79,494.00
KITCHEN INCOME	\$13,901.00
FISH HATCHERY INCOME	\$ 39,514.00
SPECIAL EVENT INCOME	\$14,805.00
RECREATION PROGRAM INCOME	11,869.00
07/08 INCOME PLUS BEGINNING FUND BALANCE	\$533,265.00
TOTAL INCOME	\$533,265.00
	2007-2008
EXPENSES	
ADMINISTRATIVE EXPENSE	\$179,087.82
CAPITOL OUTLAY	\$47,649.00
WINTER EXPENSE	\$124,411.00
KITCHEN EXPENSE	\$13,710.00

FISH HATCHERY EXPENSE	\$37,726.00
SPECIAL EVENTS	\$8,698.00
PROGRAM EXPENSE	\$15,344.00
TOTAL EXPENSE	\$426,625.82
TOTAL INCOME LESS EXPENSES	\$106,639.18
LESS 2007 BLDG FUND BAL/TRFR TO BLDG FUND	\$41,646.00
LESS 2008 BLDG FUND BAL/TRFR TO BLDG FUND	\$57,915.00
ENDING FUND BALANCE	\$7,078.18
Grayling Recreation Authority	
Building Fund Budget 5/31/2008	
	AMENDED 4/08
	2007-2008
INCOME	BUILDING FUND
BUILDING FUND 2006-2007	\$41,646.00
BUILDING FUND 2007-2008	\$57,915.00
BUILDING GRANTS	
BUILDING CONTRIBUTIONS	
BUILDING FUND INTEREST	\$1,000.00
TOTAL INCOME	\$100,561.00
EXPENSE	
CONSTRUCTION EXPENSE	
BUILDING DESIGN	\$2,600.00
BUILDING DEMOLITION/PERMITS	\$22,670.00
STORAGE GARAGE CONSTRUCTION/PERMITS	\$29,000.00
DRIVEWAY	\$20,000.00

ELECTRICAL	\$4,300.00
PLAYGROUND LOAN	\$11,552.00
ARCHERY BUILDING PAINTING	\$3,500.00
TOTAL BUILDING EXPENSES	\$ 93,622.00
INCOME LESS EXPENSES	\$6,939.00

Beaver Creek Township

Standard Operational Procedures

Beaver Creek Township operates under an administrative structure consisting of a Township Supervisor, Township Clerk, Township Treasurer and two Township Trustees. These positions are elected by registered voters of the Township. The elected offices for Township Supervisor, Clerk, Treasurer and Trustees are four year terms. Bylaws adopted by the Township Board determine the order of business and method of conducting regular township business. Meetings are conducted using *Robert's Rules of Order*. For issues that require a vote for making a determination, a simple majority of the Township Board present is required.

Parks and recreation facilities are under the direct control of the Township Board of Trustees. The Township Board is directly responsible for creating the Recreation Plan.

Parks & Recreation Staff

Beaver Creek Township does not employ staff for recreational activities. Township recreation is handled by the Township Board. For 2008, the individuals involved in recreational activities are as follows:

Table 2.3: Beaver Creek Elected Officials	
Lee Riley	Supervisor
Sharon Harman	Clerk
Vivian Balmes	Treasurer
Meagan Little	Trustee
Gary Summers	Trustee

Table 2.4: Beaver Creek Township Planning Commission
Ed Holtcamp, Chair
John Welt
Andy Neilson

Tom Brooks
Sharon Hartman

Table 2.5: Beaver Creek Township Zoning Board of Appeals
Gary Parkinson
Eric Bunting

Beaver Creek Operating Budget

	BEAVER CREEK TOWNSHIP	
	2008-09 BUDGET SUMMARY	
101-000	REVENUE	Budget
101-000	DEPARTMENT	2008-09
403-000	CUR/REAL/PP TAX	81,403.00
407-000	DELQ PROPERTY TAX	7,000.00
437-000	IFT	750.00
445-000	INTEREST/PENALTIES TAXES	3,500.00
446-000	NEW TRANSFER SITE S/A	45,000.00
448-000	ADMINISTRATION FEE	31,700.00
574-000	STATE SHARED REVENUE	101,061.00
579-000	FINES/ORDINANCE ENFORCEMENT	500.00
600-000	SWAMP TAX	27,300.00
624-000	SUMMER TAX COLLECTION	13,500.00
642-000	CEMETARY LOTS/GRAVE LABOR	1,500.00
664-000	INTEREST/INVESTMENTS	1,800.00
668-000	RENTS/ROYALTIES(OIL WELLS)	18,000.00
670-000	TRASH BAG SALES	400.00
670-001	ADDITIONAL T.S. STICKERS	300.00
671-000	OTHER REVENUES	1,000.00
672-000	ROAD SPECIAL ASSESSMENTS	63,405.00

674-000	AFLAC	3,360.00
676-000	REFUNDS/REIMBURSEMENTS	100.00
678-000	TELECOMMUNICATIONS MAINTEN	3,700.00
722-000	ZONING REVENUE	3,000.00
		408,279.00
	EXPENSE SUMMARY	Proposed
	DEPARTMENT	2008-09
101-101	TOWNSHIP BOARD	97,159.00
101-105	TRUSTEE	11,211.02
101-171	SUPERVISOR	27,423.00
101-209	ASSESSING	30,098.00
101-215	CLERK	43,072.49
101-223	AUDIT	2,600.00
101-247	BOARD OF REVIEW	700.00
101-253	TREASURER	39,068.49
101-262	ELECTION BOARD	2,200.00
101-265	TOWNSHIP HALL BUILDINGS/GR.	72,958.00
101-266	LEGAL	1,000.00
101-276	CEMETERY	1,300.00
101-294	UNALLOCATED	
101-405	PLANNING/ZONING	24,839.00
101-445	DPW	5,000.00
101-526	TRANSFER SITE	-
101-528	NEW TRANSFER SITE	38,800.00
101-536	UTILITY AUTHORITY	-
101-862	PENSION	10,850.00
101-965	TRANSFERS	-

		408,279.00
208 REVENUE	208 PARK 2008-09	Proposed
208-000-664- 000	INTEREST ON INVESTMENTS	200.00
208-000-668- 000	RENT	7,000.00
208-000-675- 000	PICNIC DONATIONS	3,000.00
208-000-675- 002	PICNIC FUND SALE PROMO ITEMS	60.00
		10,260.00
208 EXPENSE		Proposed
208-750-802- 000	SNOW REMOVAL	800.00
208-750-880- 000	PICNIC EXPENDITURES	3,000.00
208-750-923- 000	BUILDING HEAT	5,000.00
208-750-930- 000	MAINTENANCE/REPAIR	500.00
208-750-976- 000	IMPROVEMENTS	960.00
		10,260.00

Grayling Charter Township

Standard Operational Procedures

Grayling Charter Township operates under an administrative structure consisting of a Township Supervisor, Township Clerk, Township Treasurer and four Township Trustees. These positions are chosen by registered voters of the Township. The elected offices for Township Supervisor, Clerk, Treasurer and Trustees are four year terms. The township operates under the charter township laws of the State of Michigan. Meetings are conducted using *Robert's Rules of Order*. For issues that require a vote for making a determination, a simple majority of the Township Board present is required.

Parks and recreation facilities are under the direct control of the Township Board of Trustees. The Township Board is directly responsible for creating the Recreation Plan.

Programming/Parks & Recreation Staff

Grayling Charter Township employs one part-time staff for maintenance of recreational facilities. Township recreation is handled by the Township Board. For 2008, the individuals involved in recreational activities are as follows:

Table 2.6: Grayling Township Elected Officials	
Terry Wright	Supervisor
Monica S. Ashton	Clerk
Cindy Olson	Treasurer
Shawn Kraycs	Trustee
Dennis Long	Trustee
Tbd at November election	Trustee
Tbd at November election	Trustee

Table 2.7: Grayling Township Planning Commission
Curt Jansen, Chair
Carolyn Diponio
James Cox
Guy Roth
Dennis Long

Table 2.8: Grayling Township Zoning Board of Appeals
Barbara Greene, Chair
Dale French
Curt Jansen
Ron Joyce
James Robson

Grayling Township Operating Budget

Grayling Township Budget			
2008-2009			
Revenues			
	2006/07 Actual Audited	2007/08 Amended Budget	2008/09 Budget Request
Taxes: Real & Personal	\$159,903	\$173,000	\$175,000
Trailer Park Fees	0	300	1,300

Taxes: State	48,903	48,500	50,000
Taxes: Penalties & interest	10,056	15,000	15,000
Tax Admin. Fee	59,062	62,400	64,000
Metro Act Payment	8,969	20,000	19,400
Cable Franchise Fees	12,207	7,500	7,500
L & P Building Permits	48,393	61,000	53,800
L & P Electrical Permits	12,973	15,000	13,000
L & P Plumbing Permits	5,802	7,000	6,000
L & P Mechanical Permits	9,241	12,000	10,000
Fire Plan Review	170	2,000	2,000
State Revenue Sharing	432,117	444,500	450,013
Environmental Grants	2,600	2,000	0
Filing Fees: P/C & ZBA	4,465	10,000	8,000
Charges: Summer Tax Collection	7,634	35,000	35,000
Charges: School Elections	1,077	2,500	2,500
Charges: Compactor Fees	86,413	82,642	90,000
Recycling: County Portion	8,000	8,000	8,000
Fire Dept. Run Charges/Misc.	1,748	6,300	4,000
Ordinance Enforcement Fines	2,800	4,000	3,000
Interest Earned on Investments	25,114	25,000	14,000
Other Revenues	2,359	2,000	3,000
Sale of Recyclables	18,550	18,000	26,000
Transfers from Twp. Improvement	83,072	19,578	0
Reimbursements/Refunds	386	0	6,800
Total Revenue	\$1,052,014	\$1,097,220	\$1,067,313
Expenditures			
	2006/07 Actual Audited	2007/08 Amended Budget	2008/09 Budget Request
Dept. 101.000 Governing Body Fees/Leg.			
702.000 Governing Body Fees	\$3,496	\$3,000	\$3,500
710.000 Fringes: Social Security		200	200
712.000 Fringe Benefits		500	500
Dept. 171.000 Supervisor Salary			

702.001 Supervisor Salary	78,471	49,367	50,354
710.000 Fringes: Social Security		3,774	3,827
712.000 Fringe Benefits		26,500	28,090
Dept. 215.000 Clerk's Office			
702.002 Clerk's Salary	61,185	43,956	44,835
710.000 Fringes: Social Security		3,280	3,407
712.000 Fringe Benefits		15,000	15,900
Dept. 228.000 Computers/info			
801.003 Computer Services	13,926	4,500	4,500
801.021 Tax Roll Processing		3,500	3,500
980.002 Computer Hardware		3,500	1,000
982.000 Computer Software		500	3,000
Dept. 247.000 Board of Review			
710.000 Fringes: Social Security	392	100	100
712.000 Fringe Benefits		0	0
801.001 Board of Review: Fees		400	400
Dept. 248.000 Other General Services			
720 000 Education and Training	\$44,889	\$2,500	\$3,000
801.002 Audit Fees		6,500	5,500
860.000 Mileage		1,200	2,000
881.000 Community			
Youth		2,000	2,000
GYBC		3,000	3,000
River		200	200
KCC		2,000	2,000
Tire		200	200
GPA		50	50
Street		2,088	
900.000 Printing & Publishing		3,500	3,500
909.000 Memberships &		5,000	5,000
955.001 Miscellaneous/Other		500	500
Dept. 253. 000 Treasurer's Office			
702.003 Treasurer's Salary	43,587	22,800	23,256
710.000 Fringes: Social Security		1,745	1,767
712.000 Fringe Benefits		24,676	26,156
Dept. 257. 000 Assessor			
703.000 Assessor Salary	66,684	40,253	41,058
710.000 Fringes: Social Security		3,079	\$3,120
712.000 Fringe Benefits		27,600	29,256
Dept. 262.000 Elections			
705.000 Elections: Inspector's Fees	\$6,918	\$2,000	5,000
726.000 Elections: Supplies		500	500

801.022 QVF Computer & Operation		1,200	1,200
801.025 School Elections		2,100	2,100
955.000 Elections: Miscellaneous		500	500
Dept. 265.000 Township Offices			
703.001 Township Offices: Salaries	\$118,218	\$43,084	\$43,946
710.000 Fringes: Social Security		3,296	3,340
712.000 Fringe Benefits		28,000	29,680
728.000 Township Offices: Supplies		2,000	2,000
730.000 Township Offices: Postage		8,500	6,500
853.000 Township Offices: Telephone		3,000	3,000
859.000 Retirees Ins/Pension Admin. Fee		16,500	18,150
932.000 Township Offices: Repairs/Maint.		4,000	1,000
932.002 Custodial Supplies and Fees		9,000	3,000
972.000 Township Offices: Utilities		8,000	8,000
980.000 Township Offices: Equipment		1,800	3,500
980.001 Mechanical Equipment		500	500
Dept. 266.000 Attorney/Court			
801.000 Attorney Fees	6,621	5,000	10,000
Dept. 276.000			
801.004 Cemetery Services	\$44,152	\$30,258	\$30,000
Dept. 301.000 Twp. Law			
703.004 Ord. Enf. Salary	63,980	12,730	6,500
710.000 Fringes: Social Security		993	1,000
712.000 Fringe Benefits		0	1,000
728.000 Fuel & Supplies/Vehicle		1,800	2,800
801.05 Twill. Law Enforcement Craw. Co.		8,668	8,668
9-1-1 Contract		700	700
955.001 Miscellaneous/Other		500	500
971.003 Vehicle Outlay	0	0	0
980.00 Equipment		0	0
Dept. 336,000 Fire Dept			
801.006 Fire Department	187,543	128,016	128,000
992.000 Debt Service/Fire Dept. Real Purchases	44,163 0	44,163 1,900	44,163 0
Dept. 371. 000 Inspection Dept.			
703.002 Bldg. Inspector Salary	105,462	32,475	33,125
703.005 Bldg. Dept. Clerical		29,012	29,592
710.000 Fringes: Social Security		4,704	4,766

712.000 Fringe Benefits		17,000	17,680
722.000 Insurance and Bonds		4,400	4,400
728.001 Fuel & Supplies —		2,000	2,500
801.007 Electrical Inspector:		15,000	12,000
801.016 Plumbing Inspector:		6,000	4,800
801.017 Mechanical Inspector:		9,000	7,200
801.023 Computers/Bldg. Dept.		500	500
801.024 Operations/Bldg. Dept.		11,500	11,000
955.006 Miscellaneous/Bldg.		475	500
Dept. 446. 000 Road			
801.10.1 Road Imp./Signs:	112,843	40,783	0
Dept. 448. 000 Street Lighting			
926.000 Street Lighting	7,946	12,000	12,000
Dept. 521. 000 Compactor			
703.000 Compactor Wages	203,756	42,330	43,177
710.000 Fringes: Social Security		3,876	3,281
712.000 Fringe Benefits		22,000	23,199
726.001 Recycling & compactor		2,660	2,000
801.011 Compactor: Contractual		101,000	105,000
801.020 Recyclables Transfer		11,000	12,000
860.001 Mileage/Comp. & Rccyc.		600	1,500
928.000 Compactor: Utilities		3,600	3,600
932.001 Compactor: Repairs &		3,000	3,000
955.004 Compactor: Other		500	500
971.000 Compactor: Equipment		0	2,500
975.000 Recycling Center		2,000	2,000
CASD Recycling Pgm.		2,000	500
Dept. 721 .000 Planning			
710.000 Fringes: Social Security	2,140	200	200
712.000 Fringe Benefits		200	200
801.008 Planning Corn.: Fees		2,000	2,000
Dept. 722 .000 Zoning			
710.000 Fringes: Social Security	2,003	200	200
712.000 Fringe Benefits		200	200
801.009 SBA: Fees		2,000	2,000
Dept. 728. 000 Economic			
804.000 Contracted Services	12,717	12,000	12,000
Dept. 760. 000 Parks &			
704.005 Park Wages	9,812	8,670	8,670
710.000 Fringes: Social Security		1,000	1,000
726.000 Park & Trail Supplies		200	200
932.003 Park & Trail Repairs &		500	500
971.001 Township Parks		4,000	0

Dept 851.000 Insurance &			
722.000 Insurance and Bonds	11,710	17,000	\$17,000
Totals of actual expenditures	1,209,461		
Actual audited expenditures over	-157,447		
Total Budgeted Expenditures	\$1,052,014	\$1,097,220	\$1,067,313

Lovells Township

Standard Operational Procedures

Lovells Township operates under an administrative structure consisting of a Township Supervisor, Township Clerk, Township Treasurer and two Township Trustees. These positions are chosen by registered voters of the Township. The elected offices for Township Supervisor, Clerk, Treasurer and Trustees are four year terms. Bylaws adopted by the Township Board determine the order of business and method of conducting regular township business. Meetings are conducted using *Robert's Rules of Order*. For issues that require a vote for making a determination, a simple majority of the Township Board present is required.

Parks and recreation facilities are under the direct control of the Township Board of Trustees. The Township Board is directly responsible for creating the Recreation Plan.

Parks & Recreation Staff

Lovells Township does not employ staff for recreational activities. Township recreation is handled by the Township Board. For 2008, the individuals involved in recreational activities are as follows:

Table 2.9: Lovells Township Elected Officials	
Fred Schaibly	Supervisor
Cheryl Hopp	Clerk
Ann Duby	Treasurer
Annette Simpson	Trustee
Delphine Nowaczyk	Trustee

Table 2.10: Lovells Township Planning Commission
Shirley Longworth
Jan Reynolds
Annette Stimpson
Cynthia Infante
Tamara Kengel

Table 2.11: Lovells Township Zoning Board of Appeals
Annette Stimpson
Gary Neumann
Billy Ellison
W. James Bill, Alt.

Lovells Township Budget

Lovells Township Budget				
BUILDING & GROUNDS				
Maintenance Salary	\$2,996.00	\$2,877.00	\$4,800.00	\$4,800.00
Building & Grounds	\$285.00	\$787.00	\$2,500.00	\$2,500.00
road Improvements	\$0.00	\$0.00	\$0.00	\$0.00
Building & Grounds Mile. & Esp.	\$103.00	\$0.00	\$100.00	\$100.00
Utilities	\$8,784.00	\$10,780.00	\$12,000.00	\$12,000.00
Water System Permit Fee	\$0.00	\$0.00	\$0.00	\$0.00
Repair & Maintenance	\$2,904.00	\$628.00	\$5,000.00	\$5,000.00
Snowplowing	\$875.00	\$875.00	\$2,500.00	\$2,500.00
Land Improvements	\$5,600.00	\$0.00	\$5,000.00	\$5,000.00
Building Improvements	\$3,102.00	\$3,200.00	\$21,000.00	\$21,000.00
Total	\$24,649.00	\$19,147.00	\$52,900.00	\$52,900.00
Library Book/Video Purchases	\$0.00	\$0.00	\$0.00	\$0.00
Library Utilities	\$0.00	\$0.00	\$0.00	\$0.00
Library Equipment	\$0.00	\$0.00	\$0.00	\$0.00
Library Improvements	\$0.00	\$0.00	\$0.00	\$0.00
Library Miscellaneous	\$0.00	\$0.00	\$0.00	\$0.00
Total	\$0.00	\$0.00	\$0.00	\$0.00
Grave Opening & Closing	\$0.00	\$0.00	\$600.00	\$600.00
Cemetery Utilities	\$215.00	\$107.00	\$250.00	\$250.00
Cemetery Grounds Repair & Maint.	\$727.00	\$0.00	\$600.00	\$600.00
Cemetery Land Improvements	\$0.00	\$0.00	\$100.00	\$100.00
Cemetery Equipment	\$0.00	\$1,075.00	\$1,100.00	\$1,100.00
Total	\$942.00	\$1,182.00	\$2,650.00	\$2,650.00
GENERAL GOVERNMENT				
Social Security Township Portion	\$2,465.00	\$1,220.00	\$2,300.00	\$1,972.00
Pension	\$143.00	\$4,278.00	\$4,400.00	\$4,481.00
Medicare Township Portion	\$1,158.00	\$1,486.00	\$1,300.00	\$1,719.00
Office Supplies	\$1,303.00	\$929.00	\$1,000.00	\$1,000.00

South Branch Township

Standard Operational Procedures

South Branch Township operates under an administrative structure consisting of a Township Supervisor, Township Clerk, Township Treasurer and two Township Trustees. These positions are chosen by registered voters of the Township. The elected offices for Township Supervisor, Clerk, Treasurer and Trustees are four year terms. Bylaws adopted by the Township Board determine the order of business and method of conducting regular township business. Meetings are conducted using *Robert's Rules of Order*. For issues that require a vote for making a determination, a simple majority of the Township Board present is required.

Parks and recreation facilities are under the direct control of the Township Board of Trustees. The Township Board is directly responsible for creating the Recreation Plan.

Programming/Parks & Recreation Staff

South Branch Township does not employ staff for recreational activities. Township recreation is handled by the Township Board. For 2008, the individuals involved in recreational activities are as follows:

Table 2.12: South Branch Township Elected Officials	
Tom Kozlowski	Supervisor
Lynn George	Clerk
Suzanne Luck	Treasurer
Michael Janisse	Trustee
Paul Musselman	Trustee

Table 2.13: South Branch Township Appointed Officials	
Christie Verlac	Assessor
Phillip Verdui	Zoning Administrator

Table 2.14: South Branch Township Planning Commission	
Herman Bratfish, Chair	
Alan Diodore	
Cris Jones	
Suzanne Luck	
Donna Pflum	
Roy Spangler	
Ernest Windolph	

Table 2.15: South Branch Township Zoning Board of Appeals
Todd Jansen
Cris Jones
Rosemary Oakey
Patricia Durfee
Richard Schoenfeld

South Branch Budget

BUDGET SUMMARY SOUTH BRANCH TOWNSHIP				ADOPTED 3/11/08
GENERAL Fund # 101				
* Denotes actual audit figure	*Audit*	Budgeted	Budgeted	Budgeted
Year	"2007"	"06-07"	"07-08"	"08-09"
Revenues				
Taxes*	157,918	150,755	159,492	162,034
Tax Administration Fee	34,063	25,700	0	0
License & Permits*	558	0	0	0
Swamp Tax*	12,960	13,000	13,000	13,000
State Shared Revenues*(Projected)	125,309	128,784	126,428	125,000
Charges for Services*	11,137	8,500	10,368	10,000
Interest*	17,869	4,500	5,000	14,000
Reimbursements*	1,607	0	0	0
Rent*		0	0	0
Transfer in from "Fund Balance"			50,000	120,000
Total Revenues	361,421	331,239	364,288	444,034
Expenditures	Audit	Budgeted	Budgeted	Budgeted
Township Board*	31,901	33,750	36,000	38,000
Supervisor*	15,831	18,200	28,805	25,560
Assessor*	52,242	67,000	55,000	51,500
Elections*	2,375	2,000	1,400	2,000
Clerk*	27,235	35,000	32,200	33,200
Treasurer*	32,908	35,000	34,900	33,875
Board of Review*	1,914	2,500	2,000	2,000
Hall* (Land / Bldg.Fixed)	17,899	20,000	65,000	100,000
Planning Commission*	28,691	25,000	11,500	13,630
Zoning Administrator (Vehicle)			26,400	41,450
Zoning Board of Appeals			7,000	7,000
Street Lights*	1,908	2,500	2,500	2,500
Fringe Benefits*	15,896	25,000	25,000	25,000
Transfers to other Funds*		(Listed Below)		
Cemetery(Capital improvements)	10,000	10,000	10,000	10,000
Roads(Capital improvements)	25,000	25,000	25,000	53,000

Transfer out from "Fund Balance"		15,000		
Total Expenditures	228,800	315,950	362,705	438,715
Actual - Surplus / (Deficit)	132,621			
Projected - Surplus / (Deficit)		15,289	1,583	5,319
Accumulative Fund Balance*	632,652			
Fund Balance as of "07"**	730,273			
Projected Fund Balance "08"	SEE NOTE #1		680,273	
Projected Fund Balance "09"	SEE NOTE #2			561,856
Note #1 Fund Balance as of "07" reduced by \$50,000, Transfer back into "General Fund"				
Note #2 Projected Fund Balance of \$681,856 reduced by \$120,000 -Transfer back to General Fund				

Relationships with Other Agencies

Numerous groups within the county are involved with the improvement and operation of the recreational facilities in Crawford County. The majority of these organizations are operated on a volunteer basis. The organizations and special interest groups that assisted to provide recreation opportunity in Crawford County are:

1. Trails Sub Committee
2. Grayling Sportsplex
3. Crawford Ausable Soccer
4. Redskins Football
5. Little League Baseball
6. Crawford Ausable Athletic Director
7. Grayling Parks and Recreation Committee
8. Archery
10. Wellington Farm Park
11. Canoeing
12. Grayling Senior Center
13. Cross Country Ski Trails
14. Grayling City Parks & Recreation
15. Bicycling
16. MSUE 4-H
17. Boy Scouts/Girl Scouts
18. Trout Fishing

Beaver Creek Township, Grayling Township, Lovells Township and South Branch Township are participating in the Crawford County Recreation Plan. The City of Grayling is participating in the process, but has its own recreation plan. The Crawford AuSable School District is also actively participating in the Recreation Plan. Maple Forest Township will not be participating as they have an approved, current Recreation

Plan within their Master Plan. Frederic Township did not participate as they did not anticipate any recreational action plan items.

The Recreation Plan Proposed pathway projects are consistent with the Northeast Michigan Regional Non-motorized Transportation Plan and Investment Strategy.

CHAPTER THREE: RECREATION INVENTORY

The previous recreation plan inventory was used as the basis for the recreation inventory base. The county's and the townships' assistance was sought to update the recreation inventory list in the county.

Crawford County Recreation Properties

Crawford County and GRA Recreational Properties

Table 3.1 Crawford County & GRA Recreational Facilities				
Name	Classification	Description	Accessi- bility	Size
Hanson Hills Recreation Area	Large Urban Park Natural Resource Area Sports Complex	Large Park/Open Area that is located on State Land. Area is close to town, with bordering neighborhoods. Consists of Ski Lodge, Downhill Ski run, Nordic Ski trails, and Tubing Hill. Mt. Bike and Hiking Trail System. Includes Playground Area, Softball and Soccer Fields, Archery Facility, Disc Golf Course, Horseshoe Pits, Fishing Pond and Picnic Area.	2	277 Acres (Leased) 1500 Acres approx. (Special Use Permit)
Grayling Fish Hatchery	Special Use	Fish Hatchery Located in town, Bordering numerous residential areas. Includes Trout fishing tanks, Museum building, Picnic Area.	3	50 Acres
Crawford County Sportsplex (fairgrounds)	Sports Complex	Concession stand and ball fields	2	30 acres
Wakeley Bridge Canoe Launch	Mini-Park	Canoe access	1	½ acre
Township Park		Park leased to Grayling Township on 99 year lease		

Beaver Creek Township Recreation Properties

Table 3.2 Recreational Facilities in Beaver Creek Township				
Name	Classification	Description	Accessi- bility	Size
Beaver Creek Governmental Complex	Community Park	Community Center, playground, tennis courts, baseball and basketball courts, soccer field, ½ mile paved multi-use trail, pavilions, bathroom building	3	40 acres

Grayling Township Recreation Properties

Table 3.3 Recreational Facilities in Grayling Township				
Name	Classification	Description	Accessi- bility	Size
Grayling Township Fish Hatchery Park	Natural Urban family recreational area	Located on AuSable River East Branch close to City of Grayling and Grayling Fish Hatchery. Large playground, picnic pavilion, hiking trails, swimming and fishing	2	20 acres on east side and 4 acres on west side of river

Lovells Township Recreation Properties

Table 3.4 Recreational Facilities in Lovells Township				
Name	Classification	Description	Accessib ility	Size
Douglas Park	Neighborhood Park	Children’s playground, picnic pavilion, ball diamond, volleyball area, shuffle board court, museum	3	5.5 acres

South Branch Township Recreation Properties

Table 3.5 Recreational Facilities in South Branch Township				
Name	Classification	Description	Accessi- bility	Size
Township Hall	Neighborhood Park	Township Hall	3	5

Other Recreation Facilities within Crawford County

Table 3.6 Other Recreational Facilities in Crawford County				
Name	Classification	Description	Accessi- bility	Size
Chamber of Commerce City Park	Neighborhood Park	Chamber office, parking, pavilion/picnic area, river access	3	3

Parks and Campgrounds

State Parks, State and Federal Forest Campgrounds

Table 3.7 State & Federal Recreational Facilities in Crawford County		
Facility	Amenities	Location
North Higgins Lake State Park	210 campsites, trailer station, cabins, boat access, fishing, trails, museum, pavilions, conference center	Section 36, southern edge of Beaver Creek Township
Goose Creek State Forest Trail Camp	9 campsites, canoeing, hiking, horseback riding, wildlife viewing, fishing	5.5 miles west of Frederic, Frederic Township
Manistee River Bridge Campground	23 campsites, canoeing, fishing, canoe access	Section 31, Frederic Township
Upper Manistee River Campground	30 campsites, 10 walk-in sites, canoeing, fishing, group camp for canoeists	Section 7, Frederic Township
AuSable River Canoe Camp	13 campsites (5 are canoe access only) hiking, picnicking, fishing, wildlife viewing	Grayling Township, 5.5 miles east of Grayling
Burton's Landing Canoe Launch	12 campsites, canoeing, fishing	Section 10, Grayling Township
4 Mile State Forest Trail Camp	50 campsites, horse camp, horseback riding, boat launch, fishing, canoeing, hiking, wildlife viewing	9 miles southeast of Grayling, Grayling Township
Hartwick Pines	100 campsites, hiking, mountain bike trails, fishing, logging museum & camp, Interpretive Center	6 miles Northeast of Grayling, Grayling Township
Keystone Landing Campground	18 campsites, canoeing, fishing, canoe launch	Section 11, Grayling Township
Kneff Lake Campground	26 campsites, boating, fishing, swimming, picnicking	7 miles southeast of Grayling, Grayling Township
Lake Margrethe Forest Campground	37 campsites, boating, swimming, fishing, boat ramp	Section 17, Grayling Township
Wakeley Lake Area Federal Forest	4 walk-in campsites, limited fishing, trails	Section 23, 10 miles southeast of Grayling
Sheep Pasture Campground	3 campsites, canoeing, fishing	Section 16, southern portion of Lovells Township
Jones Lake State Forest	42 campsites, boating, swimming, fishing, small-	Section 31, Lovells

Campground	boat ramp	Township
Shupac Lake Campground	30 campsites, boating, boat ramp, swimming, fishing	Section 18, Lovells Township
Canoe Harbor Campground	44 campsites, canoeing, fishing, group campsites (2)	Section 32, South Branch Township
Connor's Flat Campground	Canoeing, boat access, fishing	Section 10, northern tip of South Branch Township
Rainbow Bend Forest Campground	6 campsites, canoeing, fishing, canoe access, canoe group camping sites	Section 3, South Branch Township
White Pine State Forest Canoe Camp	Open area campsite, canoe access only, fishing, wildlife viewing	Section 7, South Branch Township

Private Campgrounds

Table 3.8 Private Recreational Facilities in Crawford County		
Facility	Amenities	Location
River Park Campgrounds		Grayling Township
Timberly Village Campground & Mobile Home Park		City of Grayling
Happi Days Campground and Diner		Frederic, Frederic Township
The Trails Campground	63 Campsites	Frederic, Frederic Township
Yogi Bear's Jellystone Campground	218 Campsites	Grayling Township
Sno-Trac Village	60 campsites, 10 mobile homes, snowmobiling	Lovells, Lovells Township
Headwaters Camping and Cabins		Waters, Maple Forest Township

Trails

Table 3.9 Recreation Trails in Crawford County		
Trail	Description	Location
Multi-Use Trails		
Mason Tract Trail	Point to point hiking and cross country skiing trail along the South Branch AuSable River	Between Chase Bridge and M-72, 14 miles east of Grayling
Michigan Shore to Shore	Point to point trail hiking and riding	Parallels M-72,

Hiking and Riding Trail	trail from Lake Huron to Lake Michigan	South Branch Twp.
Midland to Mackinac Hiking Trail	Point to point hiking and backpacking trail that extends from Midland to Mackinac City	Parallels F97, South Branch Twp.
Hanson Hills Trails	Skiing, biking, hiking	Hanson Hills Recreation Area
Hartwick Pines	Skiing, biking, hiking	Hartwick Pines State Park
Grayling Non-motorized Pathway	Biking, walking, running	
Wakeley Lake Trail	Skiing, hiking	National Forest Service System
ORV Trails		
Cycle Conservation Club ORV Trail	Motorized off road vehicle trail	Pioneer Rd, South Branch Twp.
The Meadows ORV Trail	Motorized off road vehicle trail	Pioneer Road, South Branch Twp.
Frederic ORV Loop	Motorized off road vehicle Trail	Frederic
Snowmobile Trails		
Trail #4	Snowmobile Trail	
Trail #7	Snowmobile Trail	
Trail #9	Snowmobile Trail	Meridian Road at east boundary of South Branch Twp.
Trail # 47	Snowmobile Trail	
Trail #79	Snowmobile Trail	
Trail #409	Snowmobile Trail	
Trail #487	Snowmobile Trail	
Trail #489	Snowmobile Trail	

Public Water Access Sites

Boat/Fishing Access Sites

Table 3.10 Recreational Boat Access Sites in Crawford County		
Bluegill Lake	15 parking spaces, toilets	
Bright Lake	15 parking spaces, toilets	
Chase Bridge	5 parking spaces, toilets	Chase Bridge Rd, South

		Branch Twp.
Conner Flats	6 parking spaces, toilets	
Glory Lake	15 parking spaces, toilets	
Guthrie Lake	3 parking spaces, toilets	
High Banks	15 parking spaces, toilets	
Horseshoe Lake	5 parking spaces	
KP Lake	5 parking spaces, toilets	
Lake Margrethe	30 parking spaces	
McMasters Bridge	10 parking spaces, toilets	McMaster's Bridge Rd, South Branch Twp.
Meads Landing	15 parking spaces, toilets	Steckert Bridge Rd, South Branch Twp.
Section One Lake	4 parking spaces, toilets	
Sheep Pasture	20 parking spaces, toilets	
Smith Bridge	6 parking spaces, toilets	M-72 and Smiths Bridge Rd., South Branch Twp.
South Branch AuSable River Fishing Access	Multiple points of fishing access to the South Branch AuSable River	South Branch Rd, South Branch Township
Steckert Bridge	5 parking spaces, toilets	Steckert Bridge Rd, South Branch Twp.
Stephans Bridge	15 parking spaces, toilets	
White Pine Canoe Camp	Canoe access, fishing, wildlife viewing	Section 7, South Branch Twp

Canoe Liveries

Table 3.11 Canoe Liveries in Crawford County	
Borcher's AuSable Canoeing	AuSable River, Grayling
Jim's Canoe Livery	Ausable River, Grayling
Long's Canoe Livery	Manistee River, Grayling
Penrod's	AuSable River, Grayling
Ray's Canoeing	AuSable & Manistee Rivers, Grayling
Shel-Haven Canoe Rental	Manistee River, Grayling

Privately Owned Recreational Public Facilities

Miscellaneous

Bowling Alley

Boys & Girls Camps

Golf Courses
Miniature Golf
Marina
Shooting Range
Senior Center

Resorts, Cabins & Motels

In addition to the campgrounds already listed, Crawford County has numerous resorts, cabins and motels that are utilized by fishermen, hunters and other sports enthusiasts for overnight accommodations. Most of these facilities are located in and around the Grayling and Frederic area.

Regional Recreational Opportunities

The amounts and types of recreation opportunities, which are available in neighboring counties, are highly variable. All neighboring counties have an ample supply of state and/or federal lands, much of which can be used for recreational activities, including hunting, fishing, hiking, wildlife viewing, etc.

The closest neighboring community to the major population of Crawford County is Roscommon (Roscommon County). Roscommon has a variety of recreational facilities including a community recreation/fitness center. They also have an outdoor ice rink, a soccer field and tennis courts. Roscommon is approximately 15 miles from Grayling. Higgins Lake and Houghton Lake both provide recreational water opportunities.

To the north, Gaylord (Otsego County) has several recreational facilities that are open to the public. The Sportsplex offers an indoor ice rink and swimming pool. There are several ski lodges, groomed cross country ski trails, golf courses, a bowling alley and theatre complex. The travel distance from Gaylord to areas in Crawford County vary from about 20 minutes to close to one hour.

Oscoda County, to the east, is a very rural county with few recreational facilities beyond state and federal lands and campgrounds and the AuSable Rive. The area does offer a major golf/cross country ski resort. The travel distance from Crawford County to Oscoda County ranges from 30 minutes to more than one hour.

Kalkaska County is located to the west of Crawford County. Located within the City of Kalkaska are a variety of recreational opportunities. The area has a roller skating rink,, an archery course and a sportsplex called "Kaliseum". They also have an assortment of sports teams such as Little League, soccer and softball. Kalkaska is a 30 minute drive from Grayling, but is over an hour from other portions of the county.

Inventory Procedures

The sources used to compile this recreational inventory included compilation from the Grayling Recreation Authority, Township officials and the County of Crawford, and information from the 1997 Crawford County Recreation Plan. Compiled information was compared to existing information to ensure the consistency and/or accuracy.

Status Report on Grant-Assisted Recreational Facilities

Crawford County has received and successfully completed three grants through the DNR recreation grant funds program. They were in 1976, 1991, and 2000.

Grant #	Park Name	Scope Item and Current Condition
26-00776	Wakeley Bridge Access	Purchase of new picnic tables, fencing and road improvements. The site is currently being used by residents, non-residents and canoe liveries. It is maintained by the County.
BF91-295	Hanson Hills Recreation Area	Purchase of mechanical snow making machine, construction of one ball diamond, and one soccer field and restroom renovation. The site is currently by used by residents and maintained by the Grayling Recreation Authority.
TF00-146	Grayling Fish Hatchery Interpretative Center	River restoration, raceway infrastructure, ADA accessible trails, interpretative signage, buildings (demolition/construction) and restrooms, children's fishing pond, fencing, landscaped deck overlook, storm water retention basin and parking. The site is currently being used by residents and tourists. It is maintained by the Grayling Recreation Authority.

CRAWFORD COUNTY RECREATIONAL FACILITIES

◆ Recreational Facilities

● Boat/Fishing Access Sites

Map 3.1

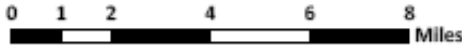
Public Lands

■ Huron National Forest

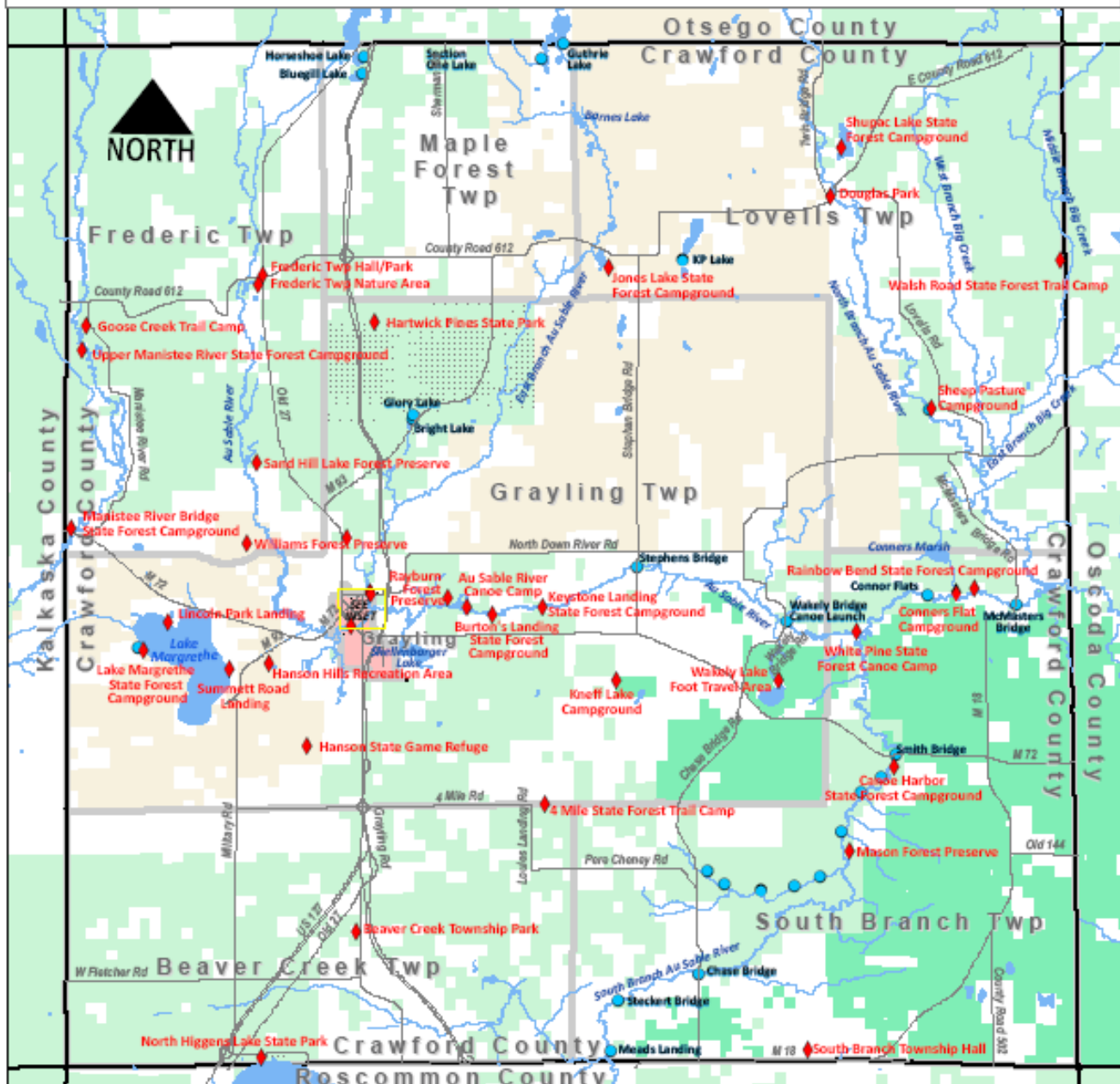
■ State of Michigan

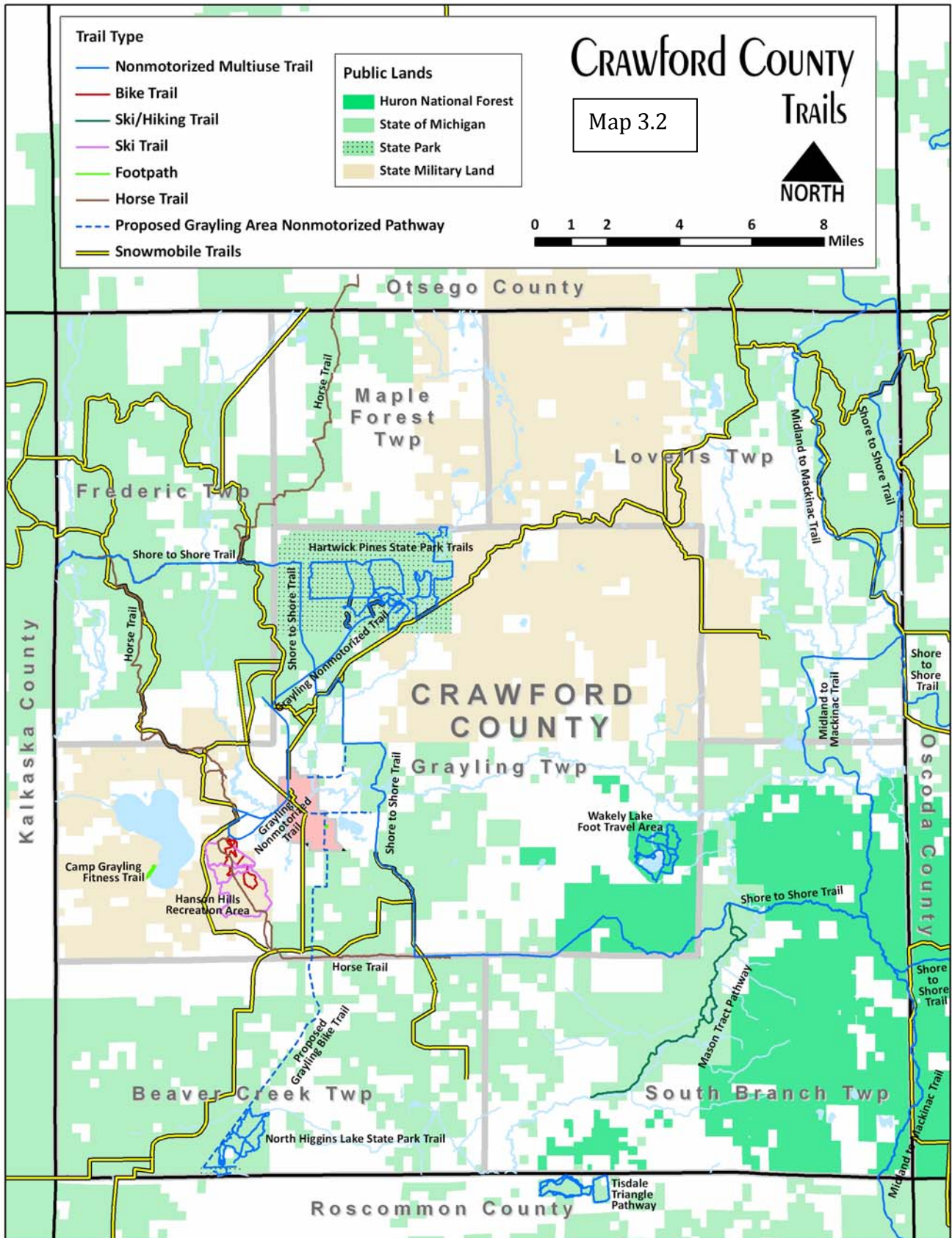
■ State Park

■ State Military Land



Map created by the
 Northeast Michigan
 Council of Governments
 August 2008





CHAPTER FOUR: DESCRIPTION OF THE PLANNING PROCESS

Schedule

- March 2008 Laura Ingles of the Northeast Michigan Council of Governments met with the Grayling Recreation Authority (GRA) members and other interested parties to discuss the planning process and to establish a timeline for the completion of the Recreation Plan. Groups with special interest in recreation were asked to participate in the process. All six townships and the City of Grayling were asked to participate in the County Recreation Plan. A key stakeholder meeting was scheduled for April 24th.
- April 2008 Laura Ingles of the Northeast Michigan Council of Governments met with the GRA members, recreational organizations, and townships. Groups with recreational interest were asked to submit information by completing a survey. Townships participation was explained. Forms for documenting information were handed out. Forms were made available on the Hanson Hills Recreational Area website.
- May 2008 An article was written in the Crawford County Avalanche explaining the Recreation Plan process. A press release was written in the Crawford Avalanche as well as a legal notice that ran 10 days prior to the meeting.
- A public input meeting was held May 29th, from 7:00 PM until 9:00 PM at the Crawford Ausable High School. Key recreation group stakeholders, township representatives, GRA representatives and NEMCOG staff were available for public discussion of recreation issues. Surveys were completed and returned that night and later to the GRA. This form was available on-line also. The group also completed assets and needs inventory and prioritized needs.
- June 2008 Townships were contacted via phone, mail and email. And assistance was offered with the development of township goals, objectives and action plans. The GRA and NEMCOG kept in contact via emails on the status of recreation plan. The results from the public meeting were organized by the number of votes and the survey results were organized by community. The results were sent to the GRA, the County, the City of Grayling, and all of the Townships that had survey responses. The GRA and NEMCOG met in June to work with the townships.

- July 2008 A working meeting was held July 22 for the County, Townships and the Grayling Recreation Authority to review the work completed on the plan. The survey results were also reviewed after NEMCOG prioritized the list. The recreation needs were assigned to the proper units of government for consideration when developing their goals and objectives. Participants were also given the opportunity to receive additional assistance with their contribution to the County recreation plan. August 1, 2008, was set as the deadline for all information to be given to NEMCOG for final completion of the plan.
- August 2008 The Recreation Plan was put on public review August 15th at the County Clerk's office for the duration of one month. The plan was also placed on the county's website for downloading and viewing. A notice of the public review was placed in the August 14, 2008, issue of The Avalanche. A complete article on the Recreation Plan ran in the August 28th issue of The Avalanche.
- September 2008 The Recreation Plan was at the County Clerk's office and the County website until September 17th. At 9:30 am in the Crawford County Building, a public meeting was held. Following public input and discussion of public input, the Crawford County Commissioner's voted to accept the Crawford County Recreation Plan.
- October/
November 2008 Townships and the GRA passed resolutions of approval for Crawford County Recreation Plan. Final copies of the plan were sent to the Regional Planning Agency. The Department of Natural Resources was submitted a copy of the plan for approval.

Public Input

Citizen opinion on recreational priorities is crucial to the development of a recreation plan. Throughout the development of this plan, members of key groups in Crawford County were involved. The GRA opted to personally invite recreational organizations and townships to an informational meeting. Recreational groups, townships, GRA and NEMCOG were available during the public input session to address issues from the public. This meeting was held in order to gather comprehensive public opinion and ideas about the future of recreation in Crawford County. The public was notified of the meeting through a press release appearing in the Crawford Avalanche in two different issues. The meeting was also posted on the Hanson Hills website. In addition,

representatives from local recreational organizations were emailed and telephoned as a reminder about the meeting. Citizens representing various recreational groups in the County were present at the session as were other interested citizens. Each participant was encouraged to discuss the current state of County recreational facilities as well as what they would like to see in the future.

There were twenty six citizens that attended the Public Input Session on May 29th representing the following: Redskin Football, canoeing, Little League, archery, bicycling, Grayling Fish Hatchery, 4-H/MSU Extension, Hartwick Pines State Campground, Wellington Farm Park, Soccer-CASA, Grayling Senior Center, City of Grayling, GRA, Crawford County, Grayling Visitors Bureau, Lovells Township, Grayling Township, Beaver Creek Township, Maple Forest Township and the general public.

The stakeholders were at tables and given an opportunity to get acquainted. Excellent communication lines were started, with some groups for the first time. Next, everyone participated in writing down the recreational assets and needs of the county. Every person was given three colored dots to vote on their three most important recreational needs. The results are listed below.

Public Input Session Results

CRAWFORD COUNTY RECREATIONAL ASSETS
Variety of activities available to the public
Rayburn Property
Great Rivers
Hartwick Pines/Wellington Farm Park/N. Higgins State Park
Hanson Hills Recreation Area
Grayling Fish Hatchery
Snowmobile Trails
Large percentage of State/Federal Property
Cross country ski trails
Paved bike path
Forest & clean water
Blue ribbon trout streams
Fishing
Variety of hunting opportunities
Lake Margrethe
Golf

Table 4.1: PUBLIC INPUT SESSION RESULTS	
# of DOTS	RECREATION NEED
12	Crawford County Sportsplex development including baseball, softball and soccer fields. Upgrades to bring all outdoor sports together for the youth of Crawford County
9	Multi-use recreation facility/Recreation Center
7	Improved coordination of county-wide recreation marketing
5	Riverside trail from township park to library
4	Rayburn improvements - portajohns
4	Recreation programs designed for Senior Citizens
4	Improved transportation between sites for youth and seniors
# of DOTS	RECREATION NEED
3	ORV connector between Frederic Trail and Kalkaska Trail
3	City Park Improvements Phase II & III -additional fishing piers -playground equipment (ADA) -foot/snowmobile bridge parallel to railroad grade -connecting trail for park
3	Finish fish hatchery building as a museum
3	New, expanded Senior Center
2	More ORV Trails (HB4323) – town access
2	Cross state connector in N. Crawford County to meet
2	Rayburn Property Loop – N. Down River/M-32 East
2	Additional baseball and softball fields for ages 5-15
2	County wide trail maps -hiking/mountain biking -road biking -cross country skiing
2	Coordinated Promotion of calendar of recreational opportunities for all ages
1	Signage for existing recreation
1	Safe Routes to school (bike, walk, rollerblade)
1	Safe Routes to Schools
1	Better (improved) communication system between organizations
1	Backpacking/long hiking trails and back country camping
1	Public access to River
1	Paved trail from township park behind hospital/schools to library and downtown
0	Ausable River/bike trail from Grayling to Oscoda
0	Intergenerational program
0	Public swimming pool
0	Movie in the park location and equipment
0	Open gym
0	A place for skateboarders
0	Better marketing of outdoor/quiet sports and recreation
0	Organized Geo-caching
0	Nature Center improvements
0	Develop Children’s Park – in central residential district

0	More outreach programs to outer laying areas
0	Improvements to Archery 3-D course – ADA accessible
Bike Trail	
3	Walk under for the downtown bridge
2	Rayburn property loop – N. Down River to M-72 East
1	Separate bridge crossing I-75 servicing Hartwick Pines Trail sections
1	Extended shoulders on Military Rd to Wellington Farm Park
0	Ausable River trail – Grayling to Oscoda
0	North side of W. M-72 from Old Dam Party Store to Ausable Trail
0	Extend shoulders from Frederic to Waters
0	Connect Camp Grayling/M-93 to N. Higgins State Park
0	M-72 West to Manistee River Road to CR 612 and East to Frederic
0	CR 612 to F97 South to North Down River Road
0	Sherman Road North to Marlett Rd West into Waters
0	Extend shoulders on M-72 East to Wakely Lake and Mason Tract
0	Separate trail extending from High School to Frederic
0	Extended shoulder on CR 612 from Frederic to Hartwick Pines
0	Trailhead parking at beginning of bicycle turnpike/N. Down
0	Extended shoulders on N. Down
0	Sidewalk connecting Ramada Inn to golf course sidewalk
0	Separate trail from McIntyre’s Landing to M-93
0	Military Road bike trail

Recognizing the fact that public input sessions are not always well attended and to guarantee maximum public input, surveys were also distributed to residents throughout the county. Surveys were handed out by township representatives, key stakeholders and the Grayling Recreational Authority. The survey was also available on-line. Twelve surveys were completed and returned. The results are below.

Survey Results

City of Grayling Survey Results (2 surveys)

Activity	Facilities Used	Improvements	Needs
Camping	Bike trail	Teenager activities	Skateboard park
Hunting	Hanson Hills	Awareness of current activities	Community pool
Fishing	City Park	Single track mountain bike trail near Hartwick Pines	Expand bike trails
Swimming	Fishing		
Biking/Mountain Biking	Basketball Hoops		
Skate Boarding	Hartwick Pines		
Archery	Playgrounds: Fish Hatchery & River		

Picking Wild Berry's	Bike Shop/Canoe Liveries		
----------------------	--------------------------	--	--

Lovells Township Survey Results (5 surveys)

Activity	Facilities Used	Improvements	Needs
Place for Kids	Douglas Park	Variety in Lovells	More available to do
Walks	Private Property	Preserve environment and nature	
Swimming	Hartwick Pines	Add basketball, ice rink, football and soccer to Lovells Tennis courts	Sportsplex – family swimming and skating
Sailing	Mason Tract	Outlying programs	Anything for kids K-12
Skiing	Ausable River	Water area clean up	
Snow Shoeing	Shupac Lake		
Pool	Warblers Pool		
Playground	Schools		
Clubhouse	Douglas Park		
Kayaking			
Biking			
Camping			
Canoeing			

Beaver Creek Township Survey Results (1 survey)

Activity	Facilities Used	Improvements	Needs
Walking	Natural Trails	Expanded senior center	Intergenerational activities
Bicycling	Wellington Farm Park	Expand bike trails	Recreation opportunities for seniors
Canoeing	Hartwick Pines	Improved transportation	

Frederic Township Survey Results (1 survey)

Activity	Facilities Used	Improvements	Needs
Camping	Hanson Hills	Bike/pedestrian paths (commuter friendly)	Public pool
Canoeing	Lake Margrethe		Youth swimming lessons
Mountain Biking	Ausable River		
Golf	Manistee River		
Golf	Koppa Bike Path		
	Hartwick Pines		

Grayling Township Survey Results (3 Surveys)

Activity	Facilities Used	Improvements	Needs
Cross Country Skiing	Bike Trails	Connector from Hatchery to Library	Bike trails
Hunting	Connector from Hatchery to Library	Connector to N. Higgins Lake SP	Back-packing/back-country camping
Fishing	Hartwick Pines State Park	Promotion of activities	More baseball/softball Fields all in one location at the Fairgrounds
Canoeing/Kayaking	North Higgins Lake State Park	Trail maps focused on Crawford County	Indoor recreational facility (for youth esp.) with volleyball, basketball, ping pong, etc.
Biking	AuSable River	Regular maintenance of baseball/softball fields	
Hiking	Huron Nat'l Forest	Repair Little League concession stands, fences	
Snow Shoeing	Wakely Lake	Expanded bike lanes on 2 lane roads	
Baseball/Softball for ages 5-15	County Trail System	Paths from outer areas connecting to downtown for commuters	
Tennis	Rayburn Estate		
Volley ball	AuSable State Forest		
Snowboarding	Cross Country Ski Trails		
Running	Little League Fields		
	Hanson Hills		

Recreational Organizations Survey Results (7 surveys)

Organization	Facilities Used	Improvements	Needs
City of Grayling Parks & Recreation Committee	Nature Center in City Park		Pool/sportsplex/hockey rink facility
Crawford AuSable School District	Ski Hill, Fish Hatchery Hanson Hills School Facilities, City/Twp Parks	Soccer fields Tennis courts Track Baseball/softball fields Swimming	Swimming pool Trail system (including ORV) More tennis courts (in town) More basketball courts

		opportunities Trail system	
Little League	Little League baseball/softball fields	Regular maintenance and upkeep of facilities, mending fences, repair concession stands	More baseball/softball fields at the fairgrounds - all in one place
Grayling Senior Center	Senior Center	More space to expand programs, on a campus with other recreation programs	Swimming pool for aquatic exercise
Boy & Cub Scouts	Schools	Weekly meeting space, Group camping around Hanson Hills	Group camping Meeting areas Storage space
ORV Trails	Frederic, Meadows & Beaver Creek ORV Trails	More ORV opportunities	County to open roads to ORV's Connect existing trails Cross state connector to MCCT N. Crawford County
Grayling Redskins	Football complex at Sportsplex	Pave existing roads New roofing on buildings Add-on to equipment room	Permanent restrooms Upgrade parking lot & add lighting New concession stand New locker rooms
Northwood Archery Club	Archery building and grounds at Hanson Hills		Skate park Tennis Court - flood in winter for ice rink

Overall, throughout the plan preparation, all parties with an interest in recreation did submit their comments and ideas either in person or by completing a survey. Because of the tremendous involvement from the different recreational groups, the GRA and the County both felt that the community was well-represented through-out the process. After all public input was gathered and recorded, the GRA and the townships met to prioritize projects for the Action Plan and to develop a capital improvements plan.

Public Input Session Sign-in Sheet

STAKE HOLDERS SIGN IN SHEET

MEETING TOPIC: **Crawford County Rec Plan** DATE: **5/29/08**

NAME	REPRESENTING	ADDRESS	TELEPHONE #	EMAIL
Sen Chaudinard	Archery	807 vine st. Grayling	989-390-0945	Northwoods bowhunter@comcast.net
Ilene Gaeiss-Wilsson	Acc. Visitors Bus.	PO Box 219	348-4945	visitor@grayling-mi.com
Lewis Skuler	ORV/CC	PO Box 486 Coldwater	5174160126	cccid5@verizon.net
Greg Yager	Cycle Conservation Club	1113 Broadbent, Lansing 48917	517-265-3605	yagermyster@olc.com
Rob Boyce	Hatfield's SP	4216 Ronger Rd.	989-348-2337	boyce@northwoods.org
Bruce Ferrell	fish/hatchery	220 W. Michigan Ave Grayling	314-5258	fish@northwoods.org
Heather Taylor	Wellingborough Park	6771 S. Military, Grayling	348-5747	heather@northwoods.org
Glenn Taylor	Redskins Football	P.O. Box 1089	348-2548	
Bud Morgan	Redskins Football	402 Remister Ave Grayling	865-0283	
Steve Bover	GRAND REDSKINS	4805 STALEYK RD, GRAYLING	348-2167	larrydwall@mspace.com
LARRY DEWALL				
DEP STEFFY	Central Park's Soccer	244 Ararat Rd, Grayling	348-2661	owen@northwoods.org
Cheri Hunter	Lawrence	101 Maple St Grayling	348-4921	photon@northwoods.com
Tamara Kengel	Lo Vells	8341 Welda Trail Grayling	348-5527	edub@northwoods.com
Windy Olson	Chickadee Tr. Club	6035 S. Hi-Sable Rd Gray	348-8812	windy@northwoods.com
Alice Miller	Grayling Senior Center	308 Lawrence St Grayling MI	348-1193	director@northwoods.com
Markus Trachten	Chickadee Tr. Club	P.O. Box 581 Grayling	348-9832	markus@northwoods.com
Lee Riley	Revere Creek Trip	8888 S. Grayling Rd 49738	375-8878	lee@northwoods.com
Dave Jensen	CRA	po 472 Grayling	348-6711	dave@northwoods.com
Jam Wilson	City of Grayling	P.O. Box 488	989-3945346	
Rebecca Smith	Recycling			

Public Input Session Sign-in Sheet

Stalder

Crawford County Recreation Plan
 Public-Input Meeting
 5/29/08
 Stalderholder

OK 6/11/24/08

NAME	# Family	Township Residence
<i>Tom Mc Cle</i>	<i>City Grayling</i>	<i>City (Township)</i>
<i>Rob Avery</i>	<i>G. R. R</i>	<i>Grayling</i>
<i>Justin Andre</i>	<i>MSUC Y-N</i>	<i>Grayling</i>
<i>Nancy Persing</i>	<i>CRAWFORD COUNTY</i>	
<i>Mike Larsen</i>		

Public Input Session Sign-in Sheet

**Crawford County Recreation Plan
Public Input Meeting
5/29/08**

NAME	# in Family	Township Reside In
Tracy Tracy Chouinard	5	City of Grayling

**Crawford County Recreation Plan
Public Input Meeting
5/29/08
Crawford-AuSable High School**

- I. Welcome
- II. Overview of the Recreation Plan and Process
- III. Explanation of Input Process
- IV. Public circulation of stakeholder tables
- V. Public input discussion – Recreation Assets & Needs
- VI. Collect surveys and data



Public Input Meeting Photos





Crawford County Recreation Survey

Crawford County is beginning the process of updating their five-year "Recreation Plan". We would like your input regarding recreational facilities located in the county. Please answer the questions below and mail this form back to the county. **Only one form per household, please!**

1. What are the recreational interests of you and your family?

2. What recreational facilities do you and your family use in Crawford County?

3. What improvements do you and your family feel are needed to existing recreational facilities located in Crawford County?

What new or expanded recreational facilities do you and your family feel are needed in Crawford County?

5. In what Crawford County Township or city do you live or have property?

6. What is your age? Your family member's ages?

7. Name and address (optional)

Thank you for your input! Return or mail to: Hanson Hill Recreation

CHAPTER FIVE: GOALS & OBJECTIVES/ACTION PLAN

Goals and objectives were developed from a public input session as well as by input from each township board, GRA and Crawford County Board of Commissioners. Proposed pathway projects are consistent with the Northeast Michigan Regional Non-motorized Transportation Plan and Investment Strategy.

Crawford County

Goals and Objectives

Goal 1. Renovate the Grayling Fish Hatchery Building and maintain the grounds.

Objectives:

- a. Procure the funding necessary to renovate the interior of the hatchery so that it can be used by and for the community.
- b. Maintain and improve the exterior of the building and the grounds as funding becomes available.
- c. Create and maintain a walking trail through the property and onward to M – 72 East.
- d. Replace the current foot bridge over the AuSable River as part of the walking path/trail.
- e. Develop the balance of the property in such a manner that allows for the natural beauty to be enjoyed by all through nature trails, parks, etc.

Goal 2. Develop the Crawford County Sports Complex so that it becomes a one-stop shopping for recreational sports in Crawford County.

Objectives:

- a. Build up to eight soccer fields along the northern boundary of the property.
- b. Build a series of baseball/softball fields to accommodate all levels of little league activities.
- c. Design, build and maintain a network of roads throughout the complex that maximizes safe and efficient traffic flow patterns.
- d. Create the necessary parking areas so that all events may be effectively accommodated.
- e. Design and build a facility to handle all concession needs for any and all programs that are being held on the site.
- f. Design and build ADA accessible restrooms for the needs of all patrons on the site at any given time.
- g. Conduct a feasibility study to establish the viability of a Crawford Community Center.

Goal 3. Develop, maintain and improve the Wakeley Landing Property.

Objectives:

- a. Maintain current access for canoeists and anglers on the property.
- b. Develop better opportunities throughout the property to accentuate the experience for canoeists and anglers.

Goal 4. Continue to expand on the non-motorized trail system within the County.

Objectives: Develop and build the following trails:

- a. Au Sable River Water/Bike Trail from Grayling to Oscoda
- b. Grayling Connector to North Higgins thus connecting with Hartwick Pines
- c. Rayburn Property Loop North Down River/M-72 East
- d. Riverside Trail from Downtown to Fish Hatchery/Township Park
- e. West M-72 north side of M-72 to Old Dam Party Store then to AuSable Trail
- f. Walk-under for Downtown Bridge
- g. Extended shoulders from Frederic to Waters
- h. Connect Camp Grayling/M-93 to North Higgins State Park
- i. M-72 West to Manistee River Road to 612 and East to Frederic
- j. 612 East to F97 south to North Down River Road
- k. Sherman Road North to Marlett Road west into Waters
- l. Extend shoulders on M-72 East to Wakeley Lake and Mason Tract
- m. Separate Trail extending from High School to Frederic
- n. Extended Shoulder on CR 612 from Frederic around to Hartwick Pines Entrance
- o. Separate Bridge crossing I-75 servicing Hartwick Pines Trail segments
- p. Trailhead parking at beginning of Grayling Bicycle Turnpike/North Down River
- q. Extended shoulders on North Down River Road
- r. Sidewalk connecting Ramada/Days Inn to Golf Course sidewalk
- s. McIntyre's Landing to M-93 Separate Pathway
- t. Sidewalk connecting sports complex to city sidewalk system

Goal 5. Evaluate the recreational opportunities/challenges in adopting a county-wide "ORV" ordinance.

Objectives:

- a. Meet with community stakeholders regarding opportunities and concerns in creating a Crawford County ORV ordinance.
- b. Identify concerns and potential pitfalls in allowing ORV access to local roads.
- c. Determine the economic impact an ORV ordinance would have on the community.
- d. Identify enforcement concerns of such and ordinance with local/state law enforcement officials.

- e. Determine impact on county infrastructure such an ordinance could have.

Crawford County Capital Improvements Schedule

Table 5-1: CRAWFORD COUNTY CAPITAL IMPROVEMENTS SCHEDULE					
Project #	Year	Project	Est. Cost	Funding Source(s)	Priority
1	2009-12	Renovate the Fish Hatchery Building	\$1,000,000	DNR, Local & Private	High
2	2010-15	Replace foot bridge over the East Branch of the AuSable River behind the hospital	\$5,000	DNR, Local & Private	Low
3	2010-15	Construct Soccer Fields	\$25,000	DNR, Local & Private	Medium
4	2010-15	Construct Baseball/Softball fields	\$100,000	DNR, Local & Private	Medium
5	2010-25	Construct Paved Roads through Sports Complex	\$500,000	DNR, Local & Private	Medium
6	2010-25	Construct paved parking areas @ sports complex	\$250,000	DNR, Local & Private	Low
7	2010-12	Construct Concession Stand @ sports complex	\$25,000	DNR, Local & Private	Medium
8	2010-12	Construct Public Restrooms @ sports complex	\$50,000	DNR, Local & Private	High
9	2010-30	Au Sable River Water/Bike Trail from Grayling to Oscoda	Unknown	DNR, Local & Private	Medium
10	2010-30	Grayling Connector to North Higgins thus connecting with Hartwick Pines	Unknown	DNR, Local & Private	Medium
11	2010-30	Rayburn Property Loop North Down River/M-72 East	Unknown	DNR, Local & Private	Medium
12	2010-30	Riverside Trail from Downtown to Fish Hatchery/Township Park	Unknown	DNR, Local & Private	Medium
13	2010-30	West M-72 north side of M-72 to Old Dam Party Store then to AuSable Trail	Unknown	DNR, Local & Private	Medium
14	2010-30	Walk-under for Downtown Bridge	Unknown	DNR, Local & Private	Medium

15	2010-30	Extended shoulders from Frederic to Waters	Unknown	DNR, Local & Private	Medium
16	2010-30	Connect Camp Grayling/M-93 to North Higgins State Park	Unknown	DNR, Local & Private	Medium
17	2010-30	M-72 West to Manistee River Road to 612 and East to Frederic	Unknown	DNR, Local & Private	Medium
18	2010-30	612 East to F97 south to North Down River Road	Unknown	DNR, Local & Private	Medium
19	2010-30	Sherman Road North to Marlett Road west into Waters	Unknown	DNR, Local & Private	Medium
20	2010-30	Extend shoulders on M-72 East to Wakeley Lake and Mason Tract	Unknown	DNR, Local & Private	Medium
21	2010-30	Separate Trail extending from High School to Frederic	Unknown	DNR, Local & Private	Medium
22	2010-30	Extended Shoulder on CR 612 from Frederic around to Hartwick Pines Entrance	Unknown	DNR, Local & Private	Medium
23	2010-30	Separate Bridge crossing I-75 servicing Hartwick Pines Trail segments	Unknown	DNR, Local & Private	Medium
24	2010-30	Trailhead parking at beginning of Grayling Bicycle Turnpike/North Down River	Unknown	DNR, Local & Private	Medium
25	2010-30	Extended shoulders on North Down River Road	Unknown	DNR, Local & Private	Medium
26	2010-30	Sidewalk connecting Ramada/Days Inn to Golf Course sidewalk	Unknown	DNR, Local & Private	Medium
27	2010-30	McIntyre's Landing to M-93 Separate Pathway	Unknown	DNR, Local & Private	Medium
28	2010-30	Sidewalk connecting sports complex to city sidewalk system	Unknown	DNR, Local & Private	Medium

Crawford County Rationale

Project #	Justification
1	Completes a long standing project and allows a historical site to be used by the community
2	Current Bridge is in disrepair and needs to be replaced for safety reasons
3	New soccer fields will provide a recreational asset to the community and align themselves in the same location as other recreational sports facilities
4	New baseball/softball fields will provide a recreational asset to the community and align themselves in the same location as other recreational sports facilities
5	Paved roadways will provide a more finished complex along with protecting the adjoining assets of the complex
6	Paved roadways will provide a more finished complex along with protecting the adjoining assets of the complex
7	One concession facility to serve all organizations and events would be efficient and economical
8	Restrooms will be a priority with the amount of pedestrian traffic by participants and spectators visiting the sports complex
9	Improvement and expansion of the existing trail system only enhances our community to its residents and visitors
10	Improvement and expansion of the existing trail system only enhances our community to its residents and visitors
11	Improvement and expansion of the existing trail system only enhances our community to its residents and visitors
12	Improvement and expansion of the existing trail system only enhances our community to its residents and visitors
13	Improvement and expansion of the existing trail system only enhances our community to its residents and visitors
14	Improvement and expansion of the existing trail system only enhances our community to its residents and visitors
15	Improvement and expansion of the existing trail system only enhances our community to its residents and visitors
16	Improvement and expansion of the existing trail system only enhances our community to its residents and visitors

17	Improvement and expansion of the existing trail system only enhances our community to its residents and visitors
18	Improvement and expansion of the existing trail system only enhances our community to its residents and visitors
19	Improvement and expansion of the existing trail system only enhances our community to its residents and visitors
20	Improvement and expansion of the existing trail system only enhances our community to its residents and visitors
21	Improvement and expansion of the existing trail system only enhances our community to its residents and visitors
22	Improvement and expansion of the existing trail system only enhances our community to its residents and visitors
23	Improvement and expansion of the existing trail system only enhances our community to its residents and visitors
24	Improvement and expansion of the existing trail system only enhances our community to its residents and visitors
25	Improvement and expansion of the existing trail system only enhances our community to its residents and visitors
26	Improvement and expansion of the existing trail system only enhances our community to its residents and visitors
27	Improvement and expansion of the existing trail system only enhances our community to its residents and visitors
28	Improvement and expansion of the existing trail system only enhances our community to its residents and visitors

Basis for Action

Of the 360,000 acres in Crawford County, almost 70% of it is publicly owned. Many of the 15,000+ people that live in this community do because of the abundance of public land. Certainly, many of the visitors to Crawford County throughout the year are here for that very reason. It is for this purpose that the County must make the most of our recreational activities. The more the County improves its recreational activities for those that live here and those that visit, the more it will grow as a community, economically & culturally. Crawford County already boasts many hunting and fishing opportunities; however, for its size the County also has excellent non-motorized trial opportunities to go along with canoeing and hiking excursions waiting to be experienced. There exists a county-wide voted millage to preserve and enhance the prospects of our recreational challenges.

Hatchery

The old Grayling Fish Hatchery has been a source of pride and nostalgia for many residents over the years. Deeded to the County under a public use deed it has been operated by the Grayling Recreational Authority as a fund raiser for many summers. Over the last ten years, grant dollars have been secured to reconstruct the raceways, enhance the grounds, create a children's fishing pond along with a storm water retention pond. The building has had its roof replaced; the cupola restored and has been completely painted. It is now in need of a complete interior restoration. Once complete, the building could be utilized by a public agency, community service agency or historical preservation group. It could also potentially be converted to a museum of area history. In any event, the once abandoned and dilapidated building would regain its past luster and become a center of community activity once again.

The fish hatchery grounds provide even more opportunities for trips through nature. There are occasional trails that follow the river up until the foot bridge. There are limitless opportunities to expand these trails on site and connect with other trails leading to various points of interest in the County.

Sports Complex

Years ago, this parcel was deeded to the County by the State in order to allow the community a place to hold its county fair. As time passed and interest waned in the fair, the property began to be used as a center for sporting events such as football, mud bogs and equestrian activities. Although open and utilized by the community, the Crawford County Board of Commissioners has recognized the potential for this site to be a "one-stop-shopping" for community sporting events that are not sponsored by the public school system. The vision for this site would be to host the bulk of the community sporting leagues such as football, soccer, baseball, etc. We believed, if designed well, the various groups could capitalize on the economies of scale that occur when the organizations sharing one large site.

Wakeley Landing

This is a relatively small parcel on the mainstream of the AuSable that is used frequently by canoeists and anglers alike. The County maintains this site in a somewhat rustic fashion but the site could easily be made to be more accommodating in the future for the benefit of all.

Trails

Crawford County currently enjoys walking and biking trails that lead from Hartwick Pines State Park, to the High School and then into the City of Grayling along with a three mile trail from west of town, following M - 72 into the City of Grayling. The City has sidewalks on virtually every city street that allows numerous people to walk wherever they would like in our community. That said, there still exists limitless opportunities for additional trails connecting every corner of the county to

itself and adjacent counties. The County believes these types of trails are ideal for Crawford County, its residents and its visitors. The proposed pathways are consistent with the NEMCOG Regional Trails study findings.

Off Road Vehicles

With the recent legislation enacted to allow counties to adopt their own ORV ordinance that could allow ORVs to travel along the side of certain roads, the recreational opportunities in Crawford County have increased dramatically. However, at this time, the Crawford County Board is only in the preliminary discussions of such an ordinance and would require a great deal more research and discussion with the individual stakeholders throughout our community prior to an ordinance being drafted. However, if the Board does decide to pursue a Crawford County ORV ordinance, further challenges and opportunities for improvements would undoubtedly present themselves and the Board would need to be prepared for such occurrences.

Grayling Recreation Authority

Goals & Objectives

Goal 1. Pursue improvements to recreational opportunities that are not currently available within the county.

Objectives

- a. Expand recreational facilities within Hanson Hill Recreation Area including phase II of Hoppers Playground.
- b. Upgrade the winter sports equipment and facilities.
- c. Add lighting to ball field.
- d. Continue to maintain and enhance the physical appearance of the park.

Goal 2. Ensure county sponsored recreational facilities and activities are open and accessible to all members of the public, regardless of age, race, handicap, etc.

Objectives

- a. Construction of new lodge/warming facility and bathrooms.
- b. Construction of a bridge for barrier free access to fish.
- c. New construction will meet barrier free accessibility requirements for parks.

Goal 3. Facilitate parks and recreation services within Crawford County.

Objectives

- a. Lead update of the County-wide five year recreation plan.

- b. Lead process to encourage coordination and communication of county recreation stakeholders.

Grayling Recreation Authority Capital Improvements Schedule

Table 5-2: GRA CAPITAL IMPROVEMENTS SCHEDULE					
Project #	Year	Project	Est. Cost	Funding Source(s)	Priority
1	2008	Defibrillator	\$2,500	DNR, Local, Private Foundation	
2	2009	Snow Making Guns(Upgrades)	\$40,000	DNR, Local, Private Foundation	
3	2009	Winter Sports Rental Equipment	\$30,000	DNR, Local, Private Foundation	
4	2009	Terrain Park Obstacles/Equipment	\$6,000	DNR, Local, Private Foundation	
5	2009	Industrial Mower	\$9,000	DNR, Local, Private Foundation	
6	2009	Point of sale computer system	\$10,000	DNR, Local, Private Foundation	
7	2009	Snowmobile (Ski Patrol)	\$8,000	DNR, Local, Private Foundation	
8	2010	Lighted Ski/Walking Trail	\$10,000	DNR, Local, Private Foundation	
9	2010	Development of Tubing Park	\$50,000	DNR, Local, Private Foundation	
10	2011	Lights for Softball Field	\$30,000	DNR, Local, Private Foundation	
11	2011	Hoppers Playground (Phase 2)	\$43,000	DNR, Local, Private Foundation	
12	2011	Bridge to island and docks for pond	\$5,000	DNR, Local, Private Foundation	
13	2012	Construction of New Lodge/Office Facility/Outdoor Bathrooms (Phase 1)	\$480,000	DNR, Local, Private Foundation	
14	2013	Multi-Purpose Pavilion/Bathroom Facility	\$65,000	DNR, Local, Private Foundation	
15	2013	Construction of New Lodge/Warming Facility (Phase2)	\$480,000	DNR, Local, Private Foundation	

Grayling Recreation Authority Rationale

Project #	Justification
1	A defibrillator is a necessary “life saving” tool for the ski patrol and for the administration at GRA.
2	Additional Snowmaking guns will insure that ski runs have adequate amounts of snow coverage for the safety of the participants.
3	The availability of winter sports rental equipment is needed service to the customers.
4	Terrain Park obstacles will allow participants a variety of different technical challenges and to practice freestyle skills.
5	An industrial mower will allow for efficient mowing of grounds and athletic fields.
6	Point of sale computer system is needed to increase efficiency and provide for improved record keeping.
7	A snowmobile will increase the efficiency and response time for the ski patrol.
8	Lighting the Nordic ski trails and the walking trail will allow for night use by residents/visitors who cannot use them at other times.
9	This proposed Tube Park will allow a greater volume of customers to enjoy tubing activities.
10	Lighting the Softball field will allow for league expansion.
11	Playground equipment will increase the amount of recreational activities for children and families.
12	Bridge and docks will allow participants better access for fishing & recreational purposes.
13	The construction of new lodge/office/outdoor bathroom will allow GRA to create a barrier free environment for its customers, and create an efficient operational facility.
14	A multi-purpose pavilion/Bathroom facility will allow for more public/family events and allow participants to have shelter from the elements.
15	The construction of a new lodge/warming facility will allow customers to gather and warm up in an efficiently heated environment.

Basis for Action

The above project list is not in any particular order, as far as priorities are concerned. The availability of funding, requests from all sources in the community and new ideas or needs not included in the list could change both the order and add new projects to the schedule.

There are 14,273 people living in Crawford County. The demographics of Crawford County indicate that a large majority (71.8 %) of the County exists as family households. While 1,828 households have children under the age of 18, there are 1,629 households that have individuals over the age of 65. Over half of county residents are between the ages of 25-64. Also, there are 3,041 disabled residents in Crawford County. Due to the large number of residents who are able to pursue active recreation as well as the high number of households with children and disabled persons, Crawford County must plan recreational facilities that will appeal

to a wide variety of people. In addition, with the median income of the County being \$33,364, recreation must be fairly affordable.

Crawford County recreation is handled by the County Commissioners or the Grayling Recreation Authority. The Grayling Recreation Authority has full-time staff and part-time staff.

Hanson Hills Recreation Area

The Grayling Recreation Authority wishes to pursue continued improvement to the recreational facility allowing all county residents to enjoy activities. These plans include upgrades to the facility for expanded use and safety of users. Hanson Hills offers a variety of activities including down hill and cross country skiing, tubing, biking, softball fields and a new playground (Hoppers Playground).

Planned improvements will allow the facility to become more user-friendly for residents with handicaps and those who cannot utilize the facility during the day hours. It is the goal of the GRA to improve access and recreational activities for all residents of the County.

Beaver Creek Township

Goals & Objectives

Goal 1. Pursue improvements to recreational opportunities that are not currently available within the township.

Objectives

- a. Expand recreational facilities within the township including adding new playground equipment.
- b. Construct pavilions on township park property.
- c. Add lighting to ball field at township hall property.
- d. Continue to maintain and enhance the physical appearance of the park.

Goal 2. Ensure township sponsored recreational facilities and activities are open and accessible to all members of the public, regardless of age, race, handicap, etc.

Objectives

- a. Construct shuffleboard court under pavilion to allow by all ages regardless of weather.
- b. New construction will meet barrier free accessibility requirements for parks.

Beaver Creek Township Capital Improvement Schedule

Table 5-3: BEAVER CREEK TOWNSHIP CAPITAL IMPROVEMENTS SCHEDULE			
Project #	Project	Est. Cost	Funding Source(s)
1	Additional playground equipment	\$25,000	DNR, Local , Private Donations
2	Shuffleboard Courts	\$5,000	DNR, Local, Private Donations
3	Landscaping & transplanting trees	\$2,000	Volunteers, Local
4	Expand Picnic pavilion	\$30,000	DNR, Local, Private Donations
5	Add up to three small covered pavilions large enough to cover four to six, eight foot picnic tables	\$3,000 each	DNR, Local, Private Donations
6	Irrigation well and system	\$20,000	DNR, Local, Private Donations
7	Ball Field Lighting	\$10,000	DNR, Local, Private Donations
8	Walking Trail additions	\$10,000 to \$40,000	DNR, Local, Private Donations
9	Separate building or addition to Library expansion	\$50,000	CDBG, Local, Private, Foundations and Donations
10	Additional parking	\$6,000	DNR, Local, Private Donations

Beaver Creek Township Rationale

Project #	Justification
1	The existing playground equipment has served the community well since it was installed in 1992 and is still in good condition. With the other improvements being made to the park, adding and updating the playgrounds now becomes one of the top priorities.
2	It is possible that shuffleboard courts can be added in the new pavilion. This would allow use even during unfavorable weather and would cost considerably less than separate courts.
3	Landscaping and the addition of transplanted trees would greatly enhance the park's appearance. Improvements of this nature could be incorporated with other projects; they could also be facilitated by volunteers similar to what we have experienced in the past.
4	The new picnic pavilions will lend itself to future expansion. It was added on the south end of the existing pavilion/bathroom building. The south end of the new pavilion has a clear span and lends itself to be doubled or even tripled in size and allow for the possibility of winter skating rink under the pavilion.

5	The addition of small pavilions would allow for other groups to access covered areas when the larger pavilions are being used. They could be scattered around the park. For instance, one of the proposed small pavilions could be located near the playgrounds and would provide cover for adults supervising children. They could be built as funds become available and are small enough to be constructed with donated labor.
6	The Beaver Creek Park is located on the type of soil that does not retain water. In order for the park to look green during the dry season, the addition of irrigation well and system would keep the park green through the entire time the park is open for use.
7	The softball field would lend itself very well to lighting especially if the field was being irrigated. This would allow play to continue even after dark.
8	The new walking trail lends itself to expansion. There is also a possibility that the trail within the park could be connected to the proposed trail system running from Grayling to North Higgins State Park.
9	The Beaver Creek Township Library has been operating a branch in Beaver Creek Office Building since June of 2000. In the event that the Township would need additional space, or if the library ever wanted to expand, it would be necessary to expand the office building or bring about the construction of a separate building dedicated to library use.
10	Additional parking was included within the projects constructed in the summer of 2003. The added facilities and increasing popularity of the park may require even more expansion for parking in the future.

Basis for Action

The above project list is not in any particular order, as far as priorities are concerned. The availability of funding, requests from all sources in the community and new ideas or needs not included in the list could change both the order and add new projects to the schedule.

There are 1,486 people living in Beaver Creek Township. The demographics of Beaver Creek Township indicate that a large majority (76.1%) of the Township exists as family households. While 184 households have children under the age of 18, there are 167 households that have individuals over the age of 65. Over half of the township residents are between the ages of 25-64. Also, there are 378 disabled residents in Beaver Creek Township. Due to the large number of residents who are able to pursue active recreation as well as the high number of households with children and disabled persons, Beaver Creek Township must plan recreational facilities that will appeal to a wide variety of people. In addition, with the median income of the Township being \$36,613, recreation must be fairly affordable.

Beaver Creek Township has no staff for recreational activities. Township recreation is handled by the Township Board.

Due to the fact that there are more developed recreational facilities and more cultural opportunities in the nearby City of Grayling, Beaver Creek Township

intends to capitalize on its natural assets to fulfill the needs of the Township. Therefore, Beaver Creek Township intends to develop its outdoor recreation to suit the needs of differing age groups, income levels, and physical abilities of Township residents and visitors.

Township Hall and Park

Beaver Creek Township plans to make major improvements to its township park since this is the only recreational property that the township owns. Park improvements are important to the township. As funding is secured, the township's intent is to continue to make improvements so that it will offer all residents recreational opportunities.

The Township's plan for development include additional pavilions, new play ground equipment, shuffleboard courts, additional pavilions, lighting, and paving, landscaping and additional trails and parking.

Beaver Creek Township Library

The Township sees the need to research and pursue funding in order to expand the current library. The library shares space within the township offices making expansion for either entity implausible. Since 2000, library use has grown and is indicative of needing its own building.

Grayling Charter Township

Goals and Objectives

Goal 1. Pursue improvements to recreational opportunities that are not currently available within the township.

Objectives

- a. Expand recreational facilities within the township.
- b. Construct two fishing and viewing decks.
- c. Provide additional benches and picnic tables.

Goal 2. Ensure township sponsored recreational facilities and activities are open and accessible to all members of the public, regardless of age, race, handicap, etc.

Objectives

- a. Construct fishing site to be handicap accessible.
- b. Paving the parking lot and trails will help make the park barrier free.
- c. New construction will meet barrier free accessibility requirements for parks.

Grayling Township Capital Improvements Schedule

TABLE 5-4: GRAYLING TOWNSHIP CAPITAL IMPROVEMENTS SCHEDULE					
Project #	Year	Project	Est. Cost	Funding Source(s)	Priority
1	2009	Install pedestrian bridge across river and extend trail to pedestrian and bicyclists to access the park away from the heavy traffic on North Down River Road.	\$8,000	Local	1
2	2010	Build two 12' X 40' decks on the east side of the river for fishing and sitting.	\$8,000	Local, DNR	2
3	2011	Provide more picnic tables, benches and trash containers along the hiking trails.	\$3,000	Local	3
4	2012	Pave entry road, parking lot and hiking trails	\$10,000	Local, DNR	4

Grayling Township Rationale

Project #	Justification
1	North Down River Road is extremely busy and poses potential danger for residents to cross over into the park. This will make the park more accessible for young and old alike and encourage non-motorized travel.
2	The decks will allow for ADA access for fishing and viewing of the river. All residents will benefit from the addition of the decks to enjoy the river.
3	As the park trails become more utilized, it will be important to offer easy disposal of waste to help maintain the parks clean nature. The benches and tables will allow multi-generations to use the trail, while providing resting opportunities.
4	Paving the parking lot and trails will make it easier for handicapped citizens to use the park. Paving the trails will also allow for the easier use of skates, rollerblades and bicycles. This will enable even more residents to enjoy the park.

Basis for Action

There are 6,516 people living in Grayling Charter Township. The demographics of Grayling Charter Township indicate that a large majority (74.5%) of the Township exists as family households. While 852 households have children under the age of 18, there are 636 households that have individuals over the age of 65. Over half of the township residents are between the ages of 25-64. Also, there are 1,138 disabled residents in Grayling Charter Township. Due to the large number of residents who are able to pursue active recreation as well as the high number of

households with children and disabled persons, Grayling Charter Township must plan recreational facilities that will appeal to a wide variety of people. In addition, with the median income of the Township being \$34,690, recreation must be fairly affordable.

Grayling Township has one part-time staff for recreational activities. Township recreation is handled by the Township Board.

Due to the fact that there are more developed recreational facilities and more cultural opportunities in the nearby City of Grayling, Grayling Township intends to capitalize on its natural assets to fulfill the needs of the Township. Therefore, Grayling Township intends to develop its outdoor recreation to suit the needs of differing age groups, income levels, and physical abilities of Township residents and visitors.

Fish Hatchery Park Nature Park

Grayling Township plans to utilize this property to fill recreational gaps for all residents. The Township intends to develop the park property to include recreational opportunities for a variety of recreation activities and for all ages. To accommodate the increased usage, the parking lot will need to be improved. It is the townships desire to increase recreation opportunities at the park.

Lovells Township

Goals & Objectives

Goal 1. Pursue improvements to recreational opportunities that are not currently available within the township.

Objectives

- a. Expand recreational property within the township.
- b. Construct a concrete and dirt multi-purpose courts on township park property.
- c. Develop walking/jogging trail around Township Park.

Goal 2. Ensure township sponsored recreational facilities and activities are open and accessible to all members of the public, regardless of age, race, handicap, etc.

Objectives

- a. Encourage participation in township sponsored recreation activities.
- b. New construction will meet barrier free accessibility requirements for parks.

Lovells Township Capital Improvement Schedule

TABLE 5-5: LOVELLS TOWNSHIP CAPITAL IMPROVEMENTS SCHEDULE					
Project #	Year	Project	Est. Cost	Funding Source(s)	Priority
1	09-14	Yearly maintenance	\$2,500 yearly	Township	
2	08-09	Survey land	\$100	Township	
3	08-09	Clear land and prepare for future installations	\$2,000	Township	
4	08-09	Install drinking fountain	\$500	Township	
5	08-09	Parking lot improvements	\$1,500	Township	
6	09-10	Township sponsored recreation	\$5,000	Township, Local, Private	
7	09-10	Purchase equipment	\$100	Township	
8	09-10	Multi-purpose cement court	\$50,000	Township, Local, DNR, Private	
9	09-10	Dirt court	\$2,000	Township, Local, Private	
10	10-14	Field expansion	\$2,000	Township, Local, DNR, Private	
11	10-14	Trail/track encompassing facility	\$2,000	Township, Local, Private	

Lovells Township Rationale

Project #	Justification
1	Maintain facility on yearly basis.
2	Have an exact map of acreage for future installations to make more recreational opportunities available to the citizens of the Township.
3	Prepare land for future development of facility.
4	Drinking fountain will make the facility more user friendly for all the residents.
5	Encourage township participation and social activities.
6	Improve the parking capabilities for facility uses.
7	Purchasing some sporting equipment will encourage the use of the facilities and bike rack installation.

8	Constructions of a multi-use cement court will encourage recreations of basketball, tennis, street hockey, rollerblading and ice skating for all ages.
9	Construction of a multi-use dirt court will encourage recreations of volleyball, badminton, and provide a backup court area to use to play if the cement court is in use.
10	Expansions of the current field will enable the field to be used for multi-purposes. This will encourage recreations of baseball, football and soccer.
11	Constructing a trail/track around the entire facility will serve as a facility boundary and can also encourage the recreations for a run/walk area.

Basis for Action

The above project list is not in any particular order, as far as priorities are concerned. The availability of funding, requests from all sources in the community and new ideas or needs not included in the list could change both the order and add new projects to the schedule.

There are 578 people living in Lovells Township. The demographics of Lovells Township indicate that a large majority (63.6%) of the Township exists as family households. While 51 households have children under the age of 18, there are 117 households that have individuals over the age of 65. Just over half of the township residents are between the ages of 25-64. Also, there are 121 disabled residents in Lovells Township. Due to the large number of residents who are able to pursue active recreation as well as the high number of households with children and disabled persons, Lovells Township must plan recreational facilities that will appeal to a wide variety of people. In addition, with the median income of the Township being \$34,537, recreation must be fairly affordable.

Due to the fact that there are more developed recreational facilities and more cultural opportunities in the nearby City of Grayling, Lovells Township intends to capitalize on its natural assets to fulfill the needs of the Township. Therefore, Lovells Township intends to develop its outdoor recreation to suit the needs of differing age groups, income levels, and physical abilities of Township residents and visitors.

Douglas Park

Lovells Township plans to utilize this property to fill recreational gaps for all residents by developing the park property to include recreational opportunities for a variety of recreation activities for all ages. The park is lacking drinking fountains, basketball, tennis, street hockey, rollerblading, shuffle board courts, walking/jogging trails, volleyball and badminton courts. To accommodate the increased usage, the parking lot will need to be improved. It is the townships desire to increase recreation opportunities at the park.

South Branch Township

Goals & Objectives

Goal 1. Maintain township trails (hiking, cross country skiing, snowmobile) and assure that canoe/fishing access sites are maintained in an appropriate manner.

Objectives

- a. Work with the DNR and NFS to assure the trails are adequately maintained by the appropriate governmental unit.
- b. Work with the DNR and NFS to assure that water and fishing access sites are adequately maintained.

Goal 2. Pursue improvements to recreational opportunities that are not currently available within the township.

Objectives

- a. Expand recreational facilities within the township.
- b. Construct a picnic area on township hall property.

Goal 3. Ensure township sponsored recreational facilities and activities are open and accessible to all members of the public, regardless of age, race, handicap, etc.

Objectives

- a. Construct fishing site to be handicap accessible.
- b. New construction will meet barrier free accessibility requirements for parks.

South Branch Township Capital Improvement Schedule

TABLE 5-6: SOUTH BRANCH TOWNSHIP CAPITAL IMPROVEMENTS SCHEDULE					
Project #	Year	Project	Est. Cost	Funding Source(s)	Priority
1	2009-10	Construct township picnic area at the township hall property	\$5,000	Local, Private Donations	HIGH
2	2010-11	Mason Tract Trail repair (bridges, Decking)	\$5,000	Local, DNR, Private Donations	HIGH
3	2012-13	Disabled fishing access (possible sites: Chase bridge, Wakeley Lake, Canoe Harbor)	\$20,000	Local, DNR, Private Donations	HIGH
4	2013-14	Durant's Castle canoe dock repair	\$15,000	Local, DNR, Private Donations	MEDIUM

South Branch Township Rationale

Project #	Justification
1	Provides a convenient picnic area for township residents.
2	Repair work needed to address “wear and tear” and safety issues on the trail. All work to be done in conjunction with the MDR.
3	A disabled fishing access site will provide unique experience for the disabled. All work to be done in conjunction with the MDNR.
4	Repair work needed to address “wear and tear” and safety issues on the dock. All work to be done in conjunction with the MDR.

Basis for Action

There are 1,842 people living in South Branch Township. The demographics of South Branch Township indicate that a large majority (75.8%) of the Township exists as family households. 510 households have children under the age of 18. Over half of the township residents are between the ages of 25-64. Also, there are 288 disabled residents in South Branch Township. Due to the large number of residents who are able to pursue active recreation as well as the high number of households with children and disabled persons, South Branch Township must plan recreational facilities that will appeal to a wide variety of people. In addition, with the median income of the Township being \$34,537, recreation must be fairly affordable.

South Branch Township does not employ staff for recreational activities. Township recreation is handled by the Township Board.

Due to the fact that there are more developed recreational facilities and more cultural opportunities in the nearby City of Grayling, South Branch Township intends to capitalize on its natural assets to fulfill the needs of the Township. Therefore, South Branch Township intends to develop its outdoor recreation to suit the needs of differing age groups, income levels, and physical abilities of Township residents and visitors.

Township Hall Property

South Branch Township has very little in the way of developed recreational facilities such as parks, playgrounds, ball fields, etc. The Township is interested in pursuing a careful expansion of recreational facilities at the township hall property in order to better meet the needs of its residents. Constructing a public picnic area at this location will provide a convenient picnic area for Township residents.

Trails

South Branch Township plans to use the natural assets of this property in order to provide the public access to the natural amenities. The Township has excellent access to the main branch and the south branch of the AuSable River for outdoor recreational activities. Hiking, cross country ski and snowmobiles trails have already been established and are dependent upon the MDNR and the NFS to maintain. Therefore, the Township wishes to focus on assuring that the non-motorized trails systems are adequately maintained by the appropriate unit of Government.

As funding is pursued, South Branch Township will work with the Michigan Department of Natural Resources and other funding sources to repair the Mason Tract Trail. The proposed pathways are consistent with the NEMCOG Regional Trails study findings.

Water Access

The Township sees the need to pursue funding to establish public fishing access sites for the disabled. A handicap accessible fishing access site will provide unique experience for the disabled, not currently available. The Township will research Chase Bridge, Wakeley Lake and Canoe Harbor as possible sites. All work will be done in conjunction with the MDNR.

The township has plenty of access to the AuSable River. Durant's Castle canoe dock is in need of maintenance and upkeep. This will address "wear and tear" and safety issues on the dock. All work will be done in conjunction with the MDNR.



Michigan Department of Natural Resources-Grants Management

COMMUNITY PARK, RECREATION, OPEN SPACE, AND GREENWAY PLAN CERTIFICATION CHECKLIST

By Authority of Parts 19, 703 and 716 of Act 451, P.A. 1994, as amended. submission of this information is required for eligibility to apply for grants

INSTRUCTIONS: Complete, obtain certification signatures and submit this checklist with a locally adopted recreation plan

All recreation plans are required to meet the content and local approval standards listed in this checklist and as outlined in the *Guidelines for the Development of Community Park, Recreation, Open Space and Greenway Plans* provided by the Michigan Department of Natural Resources (DNR). To be eligible for grant consideration, plans must be submitted to the DNR prior to the grant application deadline with a completed checklist that has been signed by an authorized official(s) of the local unit of government(s) submitting the plan

PLAN INFORMATION

Name of Plan: Crawford County Recreation Plan 2009 - 2013

List the community names (including school districts) covered by the plan	County	Month and year plan adopted by the community's governing body
Crawford County	Crawford	9/2008
Grayling Recreation Authority	Crawford	9/2008
Beaver Creek Township	Crawford	10/2008
Grayling Charter Township	Crawford	11/2008
Lovells Township	Crawford	10/2008
South Branch Township	Crawford	10/2008

PLAN CONTENT

INSTRUCTIONS: Please check each box to certify that the listed information is included in the final plan.

1. COMMUNITY DESCRIPTION

2. ADMINISTRATIVE STRUCTURE

Roles of Commission(s) or Advisory Board(s)

Department, Authority and/or Staff Description and Organizational Chart

Annual and Projected Budgets for Operations, Maintenance, Capital Improvements and Recreation

Programming

Current Funding Sources

Role of Volunteers

Relationship(s) with School Districts, Other Public Agencies or Private Organizations

Regional Authorities or Trailway Commissions Only

Description of the Relationship between the Authority or Commission and the Recreation Departments of

Participating Communities

Articles of Incorporation

3. RECREATION INVENTORY

Description of Methods Used to Conduct the Inventory

Inventory of all Community Owned Parks and Recreation Facilities

Location Maps (site development plans recommended but not required)

Accessibility Assessment

Status Report for all Grant-Assisted Parks and Recreation Facilities

4. RESOURCE INVENTORY (OPTIONAL)

5. DESCRIPTION OF THE PLANNING PROCESS

6. DESCRIPTION OF THE PUBLIC INPUT PROCESS

- Description of the Method(s) Used to Solicit Public Input Before or During Preparation of the Plan. Including a Copy of the Survey or Meeting Agenda and a Summary of the Responses Received
- Copy of the Notice of the Availability of the Draft Plan for Public Review and Comment
 - Date of the Notice August 14, 2008
 - Type of Notice Newspaper - Crawford Co. Avalanche
 - Plan Location County Building
 - Duration of Draft Plan Public Review Period (Must be at Least 30 Days) 34
- Copy of the Notice for the Public Meeting Held after the One Month Public Review Period and Before the Plan's Adoption by the Governing Body(ies)
 - Date of Notice September 11, 2008
 - Name of Newspaper Crawford Co. Avalanche
 - Date of Meeting September 17, 2008
- Copy of the Minutes from the Public Meeting

7. GOALS AND OBJECTIVES

8. ACTION PROGRAM

PLAN ADOPTION DOCUMENTATION

Plans **must** be adopted by the highest level *governing body* (i.e., city council, county commission, township board). If planning is the responsibility of a Planning Commission, Park and Recreation Commission, Recreation Advisory Board or other local Board or Commission, the plan should **also** include a resolution from the Board or Commission recommending adoption of the plan by the governing body.

The local unit of government must submit the final plan to both the County and Regional Planning Agency for their information. Documentation that this was done must be submitted with the plan to the DNR

Items 1, 3 and 4 below are **required** and must be included in the plan.

APPROVAL DOCUMENTATION: For multi-jurisdictional plans, **each** local unit of government must pass a resolution adopting the plan. Prepare and attach a separate page for each unit of government included in the plan.

- 1. Official resolution of adoption by the governing body dated: September 11, 2008
- 2. Official resolution of the _____ Commission or Board, recommending adoption of the plan by the governing body, dated: _____
- 3. Copy of letter transmitting adopted plan to County Planning Agency dated: December 2, 2008
- 4. Copy of letter transmitting adopted plan to Regional Planning Agency dated December 2, 2008

OVERALL CERTIFICATION

NOTE: For multi-jurisdictional plans, Overall Certification must include the signature of each local unit of government. Prepare and attach a separate signature page for each unit of government included in the plan.

I hereby certify that the recreation plan for

Crawford County includes the required content, as indicated
(Local Unit of Government)
 above and as set forth by the DNR

Sandra Moore 12/2/08
 Authorized Official for the Local Unit of Government Date

This completed checklist must be signed and submitted with a locally adopted recreation plan to:

**GRANTS MANAGEMENT
 MICHIGAN DEPARTMENT OF NATURAL
 RESOURCES
 PO BOX 30425
 LANSING, MI 48909-7925**

DNR USE ONLY - APPROVAL

The recreation plan is approved by the DNR and the community (ies) covered by the plan, as listed on page 1 of this checklist is/are eligible to apply for recreation grants through

 Date

By: _____
 Grants Management Date

Attachment B

Personal Representative
Nola Ervin

and the Treasurer's Report as presented.

COUNTY OF CRAWFORD AND CITY OF GRAYLING RECREATION PLAN PUBLIC INPUT SESSION

Crawford County and City of Grayling residents are invited to attend a public input session for the Crawford County and City of Grayling Recreation Plans. Discussion will take place at the Grayling High School cafeteria from 7:00 p.m. to 9:00 p.m. on Thursday, May 29, 2008 and will be facilitated by the North East Michigan Council of Government (NEMCOG).

Comments relative to items for inclusion in the Crawford County and City of Grayling Recreation Plans will be collected at the input session. Recreation experts and information on current recreation assets will be available at the session. Residents and visitors are encouraged to attend.

Sandra Moore
County Clerk/Register of Deeds
Crawford County
May 1, 2008

Michele Moshier
Clerk, City of Grayling

Ja
C
m
m
fo
N:
M
M
tic
ag
w
re
M
M
J:
P
A
S
p
M
F
:
f
l

LEGAL ACTION

Attachment C

FORECLOSURE NOTICE

mortgage was assigned to US Bank National Association ND, thru mesne assignments, on which mortgage there is

claimed to be due, at the date of this notice, for principal of \$78,721.37 (seventy-eight thousand seven hundred and thirty-one dollars and 37/100ths) where the Circuit Court for the County of Crawford is held), of the premises described in said mortgage, or so much thereof as may be necessary to pay the amount due, as aforesaid on said mortgage, with interest thereon at 5.50% per annum and all legal costs, charges, and expenses, including the attorney fees allowed by law, and also any sum or sums

at the date hereof the sum of One Hundred Fifty-Three Thousand Six Hundred and Sixty Dollars (\$153,660.00) which may be paid by the undersigned necessary to protect its interest in 1/4 of Section 11, Town 26 North, Range 1 West, lying West of a line described as: Commencing at the Southwest corner of said East 1/2 of Southwest 1/4 of Northeast 1/4; thence South 88 degrees 38 minutes East 232.7 feet to a place of beginning; thence North 06 degrees 55 minutes East 632.45 feet; thence North 08 degrees 21 minutes East 255.6 feet;

City/Township to meet to discuss fire department

The respective boards of the City of Grayling and the Charter Township of Grayling will meet together on Monday, September 22 to discuss the administration of the jointly owned fire department. The meeting will be held at 6:30 p.m. in the city council meeting room.

The public is urged to attend to learn the nature of the municipal dispute which led to a lawsuit filed by the Charter Township of Grayling against the city for dissolution of the fire department if a joint administration agreement could not be reached.

CRAWFORD COUNTY BOARD OF COMMISSIONERS

BUDGET HEARING NOTICE

THE CRAWFORD COUNTY BOARD OF COMMISSIONERS WILL HOLD A BUDGET HEARING AT THE CRAWFORD COUNTY COURTHOUSE, 200 W. MICHIGAN AVE., GRAYLING, MICHIGAN ON TUESDAY, SEPTEMBER 30, 2008 AT 5:00 P.M. THE PROPERTY TAX MILLAGE RATE PROPOSED TO BE LEVIED TO SUPPORT THE PROPOSED BUDGET WILL BE A SUBJECT OF THIS HEARING. A COPY OF THE PROPOSED 2008-2009 BUDGET IS AVAILABLE FOR PUBLIC INSPECTION BEGINNING MONDAY, SEPTEMBER 11, 2008 AT THE COUNTY CLERK'S OFFICE DURING NORMAL BUSINESS HOURS (8:30 A.M. TO 4:30 P.M.).

SANDRA MOORE, COUNTY CLERK
SEPTEMBER 1, 2008

Crawford County Board of Commissioners meeting minutes are now available on the county website: www.crawfordco.org eight days following the scheduled board meeting or may be obtained at the County Clerk's office for six (6) cents per page.

Sandra Moore
County Clerk/Register of Deeds
October 11, 2002

CRAWFORD COUNTY PUBLIC HEARING NOTICE CRAWFORD COUNTY RECREATION PLAN

The Crawford County Board of Commissioners will conduct a public hearing of the Crawford County Recreation Plan. The public hearing provides the opportunity for comment for the record on the proposed Crawford County Recreation Plan. The meeting will be conducted on September 17, 2008 at 9:30 a.m. in the Crawford County Building, 200 West Michigan in Grayling, Michigan. Copies of the plan will be available for review in the Crawford County Clerk's office from 8:30 a.m. to 4:30 p.m. Monday through Friday, or on the Crawford County Website at www.crawfordco.org.

Sandra Moore
County Clerk/Register of Deeds

PUBLIC NOTICE

Public Notice
Your Right to Know, Deliver

nds West
egrees 29
0 feet to
; thence
; seconds
00 feet to
t to the

with MCLA §600.3241a, in which case

USE-
BAT-
THIS
ROAD

VALID
FICA-

Y L.
IRU

NOTICE:
**THIRTY DAY REVIEW &
COMMENT PERIOD**

of the
**COUNTY OF CRAWFORD
RECREATION PLAN**

The Crawford County Recreation Draft Plan is being posted for thirty (30) days of public review and comment. The review period is from August 15, 2008 to September 15, 2008. Copies of the plan will be available for review in the Crawford County Clerk's office from 8:30 a.m. to 4:30 p.m. Monday through Friday, or on the Crawford County Website at www.crawfordco.org. Written comments should be submitted to Chairman, Cris Jones, Grayling Recreation Authority, P.O. Box 361, Grayling, MI 49738. All comments must be received by September 15, 2008.

Sandra Moore
County Clerk/Register of Deeds
August 14, 2008

♦♦ ♦♦

Crawford County Board of Commissioners Regular Board Meeting of September 17, 2008

The Regular Meeting of the Crawford County Board of Commissioners was called to order by Chairman Dave Stephenson, at 9:33 a.m. in the Crawford County Building, Grayling, Michigan the 17th day of September, 2008.

Invocation by Commissioner Beardslee.

Pledge of Allegiance led by Commissioner Hanson.

Roll Call: Stephenson, Rogers, Hanson, Pinkelman, Lange, Anderson, and Beardslee.

Absent – None.

Sandra Moore, County Clerk-Register of Deeds - Present.

Paul Compo, County Controller – Present.

Others present at various times: Gailla Gilliland, Cris Jones, Ilene Geiss-Wilson, Mary Jergenson and Dan Sanderson.

Approval of the Regular Board Minutes

Motion by Lange, second by Rogers, to approve the Minutes for the August 20, 2008 Regular Board Meeting with a correction to page 5 under budget amendments and identify the amounts “*as presented*”. Ayes (7) seven, nays (0) none, absent (0) none, Motion Carried.

Approval of the Agenda

Motion by Beardslee, second by Lange, to accept the agenda as presented. Ayes (7) seven, nays (0) none, absent (0) none, Motion Carried.

Brief Public Comment – None.

Open Invoice Report and Prepaid Vouchers

Motion by Lange, second by Hanson, to authorize payment of the following claims:

General Fund:

Balance from "Open Invoice Rep"	29,231.28
Prepaid Invoices	494,112.26
Gross Payroll	183,380.65
Total General Fund	<u>706,724.19</u>

Millage/Road Patrol Fund

Balance from "Open Invoice Report"	402.85
Prepaid Invoices	1,118.59
Gross Payroll	15,100.23
Total Millage Fund	<u>16,621.67</u>

Tri-County 46th Trial Court

Balance from "Open Invoice Report"	
Prepaid Invoices	10,779.03
Gross Payroll	
Total Tri-County Court	<u>10,779.03</u>

Friend of the Court

Balance from "Open Invoice Report"	
Prepaid Invoices	1,702.96
Gross Payroll	9,868.00
Total Friend of the Court	<u>11,570.96</u>

Family Counseling Fund

Balance from "Open Invoice Report"	
Prepaid Invoices	196.00
Gross Payroll	
Total Family Counseling Fund	<u>196.00</u>

Enforcement/Recycle Fund

Balance from "Open Invoice Report"	2,023.08
------------------------------------	----------

Attachment E

Prepaid Invoices	964.62
Gross Payroll	4,787.38
Total Enforcement Fund	<u>7,775.08</u>

COPS in Schools Fund

Balance from "Open Invoice Report"	
Prepaid Invoices	61.69
Gross Payroll	3,264.44
Total COPS Fund	<u>3,326.13</u>

Building & Zoning Fund

Balance from "Open Invoice Report"	5,059.95
Prepaid Invoices	450.04
Gross Payroll	5,458.60
Total Building & Zoning Fund	<u>10,968.59</u>

Remonumentation Fund

Balance from "Open Invoice Report"	
Prepaid Invoices	500.00
Gross Payroll	
Total Remonumentation Fund	<u>500.00</u>

MSU Cooperative Extension Fund

Balance from "Open Invoice Report"	1,384.72
Prepaid Invoices	336.00
Gross Payroll	773.55
Total MSU Fund	<u>2,494.27</u>

Central Dispatch Fund

Balance from "Open Invoice Report"	849.00
Prepaid Invoices	661.89
Gross Payroll	18,273.16
Total Central Dispatch Fund	<u>19,784.05</u>

Courthouse Preservation Fund

Balance from "Open Invoice Report"	
Prepaid Invoices	12,544.29
Gross Payroll	
Total Courthouse Preservation Fund	<u>12,544.29</u>

Law Library Fund

Balance from "Open Invoice Report"	
Prepaid Invoices	1,022.43
Gross Payroll	
Total Library Fund	<u>1,022.43</u>

Family/Probate Court

Balance from "Open Invoice Report"	
Prepaid Invoices	37,817.16
Gross Payroll	7,070.88
Total Family/Probate Court	<u>44,888.04</u>

Animal Shelter Debt Fund

Balance from "Open Invoice Report"	177.50
Prepaid Invoices	
Gross Payroll	
Total Animal Shelter Debt Fund	<u>177.50</u>

Fish Hatchery Fund

Balance from "Open Invoice Report"	1,563.70
Prepaid Invoices	318.82
Gross Payroll	
Total Fish Fund	<u>1,882.52</u>

Attachment E

Roll Call: Anderson – aye, Beardslee – aye, Hanson – aye, Lange – aye, Pinkelman – aye, Rogers – aye, Stephenson - aye, Motion Carried.

Crawford County Recreation Plan Public Hearing

Motion by Hanson, second by Lange, to recess the regular meeting and enter into a public hearing for the Crawford County Recreation Plan. Ayes (7) seven, nays (0) none, absent (0) none, Motion Carried

GRA Chairman Cris Jones advised a stakeholders group was formed of enthusiastic recreation (biking, skiing, canoing, etc) individuals and the process began in April to identify county recreation needs. The committee held a public input session at the Grayling High School and the final review period was identified from August 15 to September 15, 2008. Mr. Jones advised a great deal of positive input has been offered and it is now before the board for public hearing.

Chairman Stephenson opened the hearing for public input.

NEMCOG Economic Development Specialist Laura Ingles advised a great deal of time went into the planning process with goals and objectives listed in the action plan. The Goals and Objectives are: 1. Renovate the Grayling Fish Hatchery Building and maintain the grounds. 2. To develop the Crawford County Sports Complex so that it becomes a one-stop shopping for recreational sports in Crawford County. 3. Develop, maintain and improve Wakeley Landing property. 4. Continue to expand on our non-motorized trail system within the County. 5. Evaluate the recreational opportunities/challenges in adopting a countywide “ORV” ordinance. The recreation plan will allow the county to now apply for state grants. Ms. Ingles advised once the resolution is approved it will then be submitted to the townships/city for approval and then on to the DNR. Mr. Jones suggested the stakeholders meet twice a year to make sure they are still on task. Commissioner Lange thanked Laura & Cris for all their efforts in the planning process. Commissioner Hanson inquired about future amendments. Ms. Ingles advised future changes will be amended through the DNR. Ilene Geiss-Wilson expressed appreciation for the process.

Public Hearing was closed at 9:51 p.m.

Motion by Hanson, second by Lange, to adopt the Crawford County Recreation Plan as a guideline for improving recreation for the residents of Crawford County for a period of 2008 through 2013. Roll Call: Beardslee – aye, Hanson – aye, Lange – aye, Pinkelman – aye, Rogers – aye, Stephenson - aye, Anderson – aye, Motion Carried.

Economic Development Partnership Update

EDP Director Gaila Gilliland appeared to update the Board on CCEDP activities to retain, expand and recruit new job opportunities to Crawford County. Ms. Gilliland placed a report on file of her 2008 accomplishments.

Approval Correspondence

Motion by Hanson, second by Beardslee, to accept the correspondence as submitted. Ayes (7) seven, nays (0) none, absent (0) none, Motion Carried.

Correspondence

1. Antrim County Board – Resolution of support to House Bill #5398.
2. Huron County Board – Resolution in support of House Bill #5398.
3. Huron County Board – Resolution urging State and Federal leaders to build a better infrastructure for our great lake waters.
4. Mecosta County Board – Resolution in support of House Bill #6112.
5. St. Joseph County Board – Resolution in support of House Bill #5398.
6. DEQ – Waters landfill in compliance. Commissioner Pinkelman suggested a letter be submitted to the Landfill recognizing they continue to meet DEQ regulations.

Attachment E

7. MI State Public Service Commission – Notice of Hearing for Electric Customers of Consumers Energy Company.
8. County Road Association of MI – 8-22 and 9-5 & 12, 2008.
9. MAC – Legislative Updates for August 29 and September 5 & 12, 2008.
10. DNR – Public notice of proposed 10 – 27 & 28, 2008 Oil & Gas Lease Auction.
11. Gourdie – Fraser – Application to Drill (multiply applications placed on file).
12. DEQ – Approval of interim Gas Management Plan.
13. 911 – Funding as proposed by MAC. Discussion followed that House Bill 6070 is going to committee Wednesday, September 24th and the Controller to e-mail representatives to voice concerns.

Motion by Lange, second by Pinkelman, to request the Controller contact state representatives and strongly oppose House Bill #6070. Roll Call: Hanson – aye, Lange – aye, Pinkelman – aye, Rogers – aye, Stephenson – aye, Anderson – aye, Beardslee – aye, Motion Carried.

Department Reports

Controller Report

NW Design Group – County Building Project Schedule

Controller Compo circulated a project schedule for the county building and site improvements and advised cost will be incurring as they proceed forward.

The Controller advised he received an e-mail from the Road Commission Manager and he recognizes the health care issue and plans to meet with commissioners soon.

Controller Compo advised the Animal Shelter is pleased with the asphalt paving and advised there needs to be 60 yards of crushed concrete and stone to make the area complete. An invoice was submitted in the amount of \$3,000 and the Shelter is requesting the county pay for ½ the crushed concrete. Commissioners suggested the county wait until a final inspection is made and Chairman Stephenson suggested the Controller inquire if Lake City Redi Mix has any crushed concrete that could be used.

Department of Human Services submitted an agreement between DHS and the County (46th Circuit Court) in the amount of \$19,379.04 for ½ payment for Foster Care (Title 4 – E) income.

Motion by Lange, second by Hanson, to enter into an agreement between the Michigan Department of Human Services and the County of Crawford/46th Circuit Court from October 1, 2008 through September 30, 2009 for Foster Care in the amount of \$19,379.04. Roll Call: Lange – aye, Pinkelman – aye, Rogers – aye, Stephenson – aye, Anderson – aye, Beardslee – aye, Hanson – aye, Motion Carried

Controller Compo advised two (2) groups (GRA & COA) have contacted him regarding allowing them to purchase insurance through the county for cost savings. Discussion followed and the Controller indicated Blue Cross is looking at reducing contract size from 100 to 50. The Controller advised the court computer server is approximately nine (9) years old and exceeded its lifespan. The Controller advised the cost could be taken from the courthouse preservation fund.

Recess at 10:56 a.m. with Commissioner Beardslee being excused.

Meeting reconvened at 11:03 a.m.

Unfinished Business

Special Events Ordinance

Commissioner Hanson inquired if the ordinance would apply to Wellington and Hanson Hills. Chairman Stephenson advised the entity would make application with the Controller and the review process would begin and depending on the size of the event the costs may be waived. An opinion was requested of the Prosecutor relative to whether Grayling Charter Township would fall under this ordinance. The violation fee will be set through the court. The controller to submit the document the townships/city entities and request written comments back for a future meeting.

ORV Ordinance

Attachment E

Commissioner Hanson advised the highlighted areas are changes from the MAC original ordinance and suggested the board review and submit the document to the State Police, Road Commission, Sheriff, DNR, GRA, Township/City officials, US Forest Service and designate 45 days advance notice.

Motion by Hanson, second by Lange, to hold a public hearing on the ORV Ordinance at 10:00 a.m. on Wednesday, November 19, 2008. Ayes (6) six, nays (0) none, absent (1) one, Motion Carried.

Commissioner's Report

Commissioner Rogers – The Commissioner advised she has nothing to report.

Commissioner Hanson - The Commissioner advised he has no Personnel & Labor Committee Recommendations to report. The Commissioner indicated Captain Clough has again requested additional MERS time and inquired whether the board is interested in allowing him to purchase previous time.

Motion by Hanson, second by Anderson, to allow Arthur Clough to purchase generic time from MERS. Roll Call: Pinkelman – nay, Rogers – nay, Stephenson – nay, Anderson – nay, Beardslee – absent, Hanson – aye, Lange – nay, Motion Carried

Commissioner Pinkelman - The Commissioner advised she has no Law Enforcement Committee recommendations to make.

Commissioner Lange –The Commissioner reported his Ways & Means Committee recommendations.

Motion by Lange, second by Hanson, to forward the T C District Library communication to the Crawford County Library Board for review. Ayes (6) six, nays (0) none, absent (1) one, Motion Carried.

Building and Zoning Purposed Fee Increases

Motion by Lange, second by Hanson, to adopt the Building & Zoning fee schedule increase effective 10-01-08. Roll Call: Rogers – aye, Stephenson – aye, Anderson – aye, Beardslee – absent, Hanson – aye, Lange – aye, Pinkelman – aye, Motion Carried

Register of Deeds Summer Educational and Technology Conference

Motion by Lange, second by Pinkelman, to authorize the Clerk/Register of Deeds to attend the Register of Deeds Summer Educational and Technology Conference in Detroit on September 7 – 10, 2008 in an amount not to exceed \$600.00. Roll Call: Stephenson – aye, Anderson – aye, Beardslee – absent, Hanson – aye, Lange – aye, Pinkelman – aye, Rogers – aye, Motion Carried

FY2008 General Fund Budget Amendments

Motion by Pinkelman, second by Hanson, to accept the FY2008 General Fund Budget Amendments to the new amount of \$5,648,343.00. Roll Call: Anderson – aye, Beardslee – absent, Hanson – aye, Lange – aye, Pinkelman – aye, Rogers – aye, Stephenson – aye, Motion Carried.

FY2008 Restricted Fund Budget Amendments

Motion by Hanson, second by Pinkelman, to accept the FY2008 Restricted Fund Budget Amendments to the new amount of \$588,827.63. Roll Call: Beardslee – absent, Hanson – aye, Lange – aye, Pinkelman – aye, Rogers – aye, Stephenson – aye, Anderson – aye, Motion Carried.

Commissioner Stephenson – The Commissioner advised he had nothing to report.

Commissioner Anderson – The Commissioner advised he had nothing to report.

Commissioner Beardslee – The Commissioner advised he had nothing to report.

New Business

Attachment E

General Fund Budget Review

Controller Compo reviewed general fund budgets. Lengthy discussion ensued regarding the Assistant Prosecutor salary and the request made. The Audit Committee request the county set the FY 2009 Budget for public hearing on September 30, 2008.

Commissioner Hanson out at 12:23 p.m. and returned at 12:25 p.m.

Motion by Hanson, second by Lange, to authorize the County send the proposed General Fund FY2009 Budget to Public Hearing on September 30, 2008 at 5:00 p.m. Ayes (6) six, nays (0) none, absent (1) one, Motion Carried.

Special Revenue Fund Budget Review

Controller Compo reviewed the special revenue fund budgets. The Audit Committee recommends the budget be set for public hearing on September 30, 2008 at 5:00 p.m.

Motion by Pinkelman, second by Lange, to authorize the County send the proposed Special Revenue Fund FY2009 Budget to Public Hearing on September 30, 2008 at 5:00 p.m. Ayes (6) six, nays (0) none, absent (1) one, Motion Carried.

Sheriff Fleet Mileage Review

Commissioners reviewed the vehicle needs for the Sheriff.

Motion by Pinkelman, second by Rogers, to authorize the Sheriff to purchase two Sheriff vehicles out of the 207 road patrol mileage fund. Roll Call: Hanson – aye, Lange – aye, Pinkelman – aye, Rogers – aye, Stephenson – aye, Anderson – aye, Beardslee – absent, Motion Carried.

Executive Session

Motion by Pinkelman, second by Hanson, to recess the regular meeting and enter into an Executive Session to discuss pending litigation with the 46th Circuit Trial Court (12:55 p.m.) Roll Call: Lange – aye, Pinkelman – aye, Rogers – aye, Stephenson – aye, Anderson – aye, Beardslee – absent, Hanson – aye, Motion Carried.

Executive Session began at 12:55 p.m. and concluded at 1:12 p.m.

Motion by Pinkelman, second by Anderson, to accept the September 17th 2008 Executive Session minutes as read. Ayes (6) six, nays (0) none, absent (1) one, Motion Carried.

46th Circuit Trial Court –vs- Crawford/Kalkaska/Otsego Counties - Court Settlement

Motion by Lange, second by Pinkelman, to authorize payment to Kienbaum, Opperwall, Hardy & Pelton, PLC and Howard L. Shipman, PC in the amount of \$450,082.42 (of which \$8,281 represents expert witness fees) as agents of the 46th Circuit Trial Court. This settlement is offered pursuant to the stipulated order modifying the July 31 and August 22, 2008 orders as to the 46th Circuit Trial Court, Crawford and Kalkaska Counties. Roll Call: Pinkelman – aye, Rogers – aye, Stephenson – aye, Anderson – aye, Beardslee – absent, Hanson – aye, Lange – aye, Motion Carried.

Citizens to Speak – None.

Announcements – None.

Adjournment

Motion by Pinkelman, second by Hanson, to adjourn meeting at 1:16 p.m. Ayes (6) six, nays (0) none, absent (1) one, Motion Carried.

Dave Stephenson, Chairman
Board of Commissioners

Sandra Moore
County Clerk/Register of Deeds

CRAWFORD COUNTY
RECREATION PLAN
RESOLUTION OF ADOPTION
COUNTY COMMISSIONERS OF THE COUNTY OF CRAWFORD

WHEREAS, the County of Crawford has undertaken a Five Year Parks and Recreation Plan which describes the physical features, existing recreation facilities and the desired actions to be taken to improve and maintain recreation facilities during the period of 2008 and 2013, and

WHEREAS, a public comment session was held on September 17, 2008, at the Crawford County Building to provide an opportunity for citizens to express opinions, ask questions, and discuss all aspects of the Recreation Plan, and

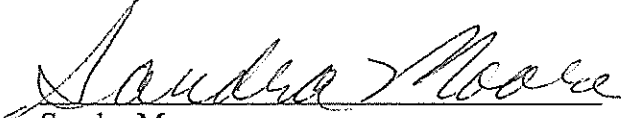
WHEREAS, the County of Crawford has developed the plan for the benefit of the entire community and to adopt the plan as a document to assist in meeting the recreation needs of the community, and

WHEREAS, after the public meeting, the County of Crawford voted to adopt said Recreation Plan.

NOW, THEREFORE BE IT RESOLVED the County Commissioners of the County of Crawford hereby adopts the Crawford Recreation Plan as a guideline for improving recreation for the residents of the COUNTY OF CRAWFORD.

Yeas: 7 Nays: 0 Absent: 0

I, Sandra Moore, Crawford County Clerk, do hereby certify that the foregoing is a true and original copy of a resolution adopted by the Crawford County Commissioners at a Regular Meeting thereof held on 17th day of September, 2008.


Sandra Moore
Crawford County Clerk

County Seal

RECREATION PLAN
RESOLUTION OF ADOPTION

WHEREAS, The Northeast Michigan Council of Governments (NEMCOG) has prepared a draft "Crawford County Recreation Plan – 2008 -2013" and

WHEREAS, Grayling Recreation Authority has been included within this plan for recreational purposes, and

WHEREAS, The plan will cover the years 2008-2013, with additions and changes as needed, and

WHEREAS, A public comment session has been conducted concerning this plan and public input has been accepted regarding this plan, and

NOW THEREFORE, BE IT RESOLVED, that the Grayling Recreation Authority hereby adopts the "Crawford County Recreation Plan – 2008-2013" as its own Recreation Plan.

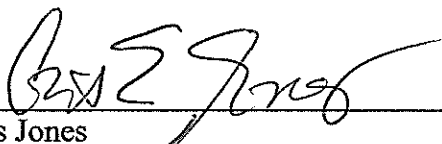
I HEREBY CERTIFY, that the forgoing Resolution was adopted at a regular meeting of the Grayling Recreation Authority held on September 24, 2008

Yeas : 8

Nays: 0

Absent: Wagner

SEPT. 24, 2008
Date



Cris Jones
Grayling Recreation Authority Chair

**RECREATION PLAN
RESOLUTION OF ADOPTION**

WHEREAS, The Northeast Michigan Council of Governments (NEMCOG) has prepared a draft "Crawford County Recreation Plan-2008-2013" and

WHEREAS, Beaver Creek Township has been included within this plan for recreational purposes, and

WHEREAS, the plan will cover the years 2008-2013, with additions and changes as needed, and

WHEREAS, a public comment session has been conducted concerning this plan and public input has been accepted regarding this plan, and

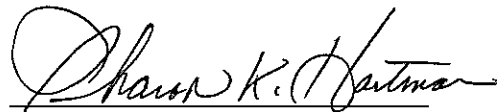
NOW THEREFORE, BE IT RESOLVED, that Beaver Creek Township hereby adopts the "Crawford County Recreation Plan-2002-2013" as its own Recreation Plan.

I HEREBY CERTIFY, that the foregoing Resolution was adopted at a regular meeting of the Beaver Creek Township Board held on October 13, 2008.

Ayes: Riley, Balmes, Summers, Little and Hartman

Nays: None

October 13, 2008



Sharon K. Hartman
Beaver Creek Township Clerk

RECREATION PLAN
RESOLUTION OF ADOPTION

WHEREAS, The Northeast Michigan Council of Governments (NEMCOG) has prepared a draft "Crawford County Recreation Plan – 2008 -2013" and

WHEREAS, Grayling Charter Township has been included within this plan for recreational purposes, and

WHEREAS, The plan will cover the years 2008-2013, with additions and changes as needed, and

WHEREAS, A public comment session has been conducted concerning this plan and public input has been accepted regarding this plan, and

NOW THEREFORE, BE IT RESOLVED, that Grayling Charter Township hereby adopts the "Crawford County Recreation Plan – 2008-2013" as its own Recreation Plan.

I HEREBY CERTIFY, that the forgoing Resolution was adopted at a regular meeting of the Grayling Charter Township held on November 19, 2008.

Yeas: 5

Nays: 0

Absent: 2 vacant positions

Nov 19, 2008
Date

Monica Ashton
Monica S. Ashton
Grayling Charter Township Clerk

RECREATION PLAN
RESOLUTION OF ADOPTION

WHEREAS, The Northeast Michigan Council of Governments (NEMCOG) has prepared a draft "Crawford County Recreation Plan – 2008 -2013" and

WHEREAS, Lovells Township has been included within this plan for recreational purposes, and

WHEREAS, The plan will cover the years 2008-2013, with additions and changes as needed, and

WHEREAS, A public comment session has been conducted concerning this plan and public input has been accepted regarding this plan, and

NOW THEREFORE, BE IT RESOLVED, that Lovells Township hereby adopts the "Crawford County Recreation Plan – 2008-2013" as its own Recreation Plan.

I HEREBY CERTIFY, that the forgoing Resolution was adopted at a regular meeting of the Lovells Township held on October 14, 2008.

Yeas: 5

Nays: 0

Absent: 0

10/15/08
Date

Cheryl L Hopp
Cheryl Hopp
Lovells Township Clerk

RECREATION PLAN
RESOLUTION OF ADOPTION

WHEREAS, The Northeast Michigan Council of Governments (NEMCOG) has prepared a draft "Crawford County Recreation Plan – 2008 -2013" and

WHEREAS, South Branch Township has been included within this plan for recreational purposes, and

WHEREAS, The plan will cover the years 2008-1013, with additions and changes as needed, and

WHEREAS, A public comment session has been conducted concerning this plan and public input has been accepted regarding this plan, and

NOW THEREFORE, BE IT RESOLVED, that South Branch Township hereby adopts the "Crawford County Recreation Plan – 2008-2013" as its own Recreation Plan.

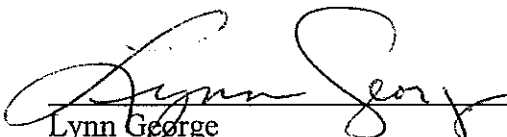
I HEREBY CERTIFY, that the forgoing Resolution was adopted at a regular meeting of the South Branch Township held on October 14, 2008.

Yeas: George, Janisse, Nays: None
Musselman, Luck & Kozlowski

Absent: None

10-14-08

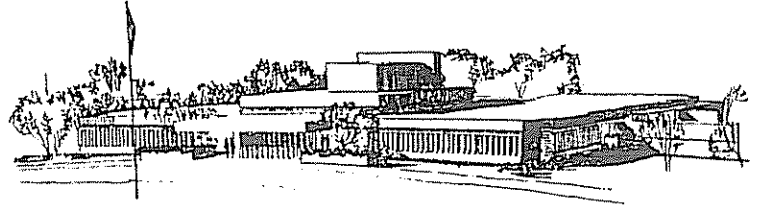
Date



Lynn George
South Branch Township Clerk

County of Crawford

Sandra Moore
County Clerk/Reg. of Deeds
Crawford County Building
200 W. Michigan Avenue
Grayling, MI 49738



December 2, 2008

Grants Management
Michigan Department of Natural Resources
PO Box 30425
Lansing, MI 48909-7925

Enclosed you will find a complete copy of the updated "Crawford County Recreation Plan." This plan was adopted by the Crawford County Commissioners on September 17, 2008.

We are sending you this copy of the plan as required by the Michigan Department of Natural Resources.

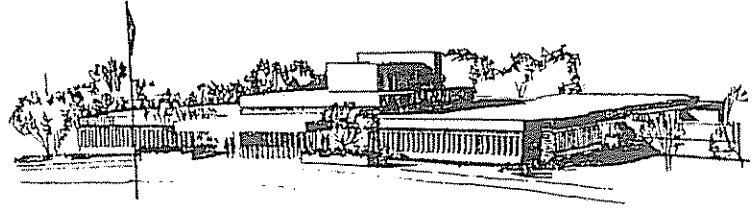
Sincerely,

A handwritten signature in cursive script that reads "Sandra Moore".

Sandra Moore
Crawford County Clerk

County of Crawford

Sandra Moore
County Clerk/Reg. of Deeds
Crawford County Building
200 W. Michigan Avenue
Grayling, MI 49738-1798



December 2, 2008

Mrs. Diane Rekowski
NEMCOG
PO Box 457
Gaylord, MI 49734

Dear Ms. Rekowski;
Enclosed you will find a complete copy of the updated "Crawford County Recreation Plan." This plan was adopted by the Crawford County Commissioners on September 17, 2008.

We are sending you this copy of the plan as required by the Michigan Department of Natural Resources.

Sincerely,

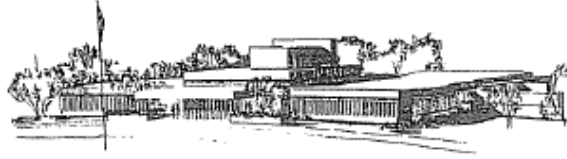
A handwritten signature in cursive script that reads "Sandra Moore". The signature is written in black ink and is positioned above the typed name and title.

Sandra Moore
Crawford County Clerk

Attachment G.3

County of Crawford

Sandra Moore
County Clerk/Reg. of Deeds
Crawford County Building
200 W. Michigan Avenue
Grayling, MI 49738-1798



December 2, 2008

Crawford County Commissioners
Crawford County Building
200 W. Michigan Avenue
Grayling, MI 49738-1798

Enclosed you will find a complete copy of the updated "Crawford County Recreation Plan." This plan was adopted by the Crawford County Commissioners on September 17, 2008.

Sincerely,

A handwritten signature of Sandra Moore in cursive script. The signature is written in black ink and is positioned below the word "Sincerely,".

Sandra Moore
Crawford County Clerk

RD
✓ HI 0



The Grayling Recreation Authority recently held a meeting with a host of organizations to gather input for Crawford County's recreation plan. The meeting was held at the Grayling High School on May 29. Above, Bob Smith, the owner of the Bicycle Shop, represented a group seeking to develop current and future bicycle recreational initiatives.

Recreation planning moving forward

by Dan Sanderson
Staff Writer

The Grayling Recreation Authority recently held a meeting with a host of organizations as they are updating the recreation plan for the community.

A public workshop, to gather input for Crawford County's recreation plan, was held at the Grayling High School on May 29.

Recreation stakeholders involved with the plan update include 4-H, the Grayling Little League, the Grayling Fish Hatchery, the Grayling Redskins, the Crawford County Historical

Society, Lake Margrethe Property Owners Association, Boy Scouts and Cub Scouts, the Crawford AuSable Soccer Association, the AuSable Valley Snowmobile Association, the Non-Motorized Trail Committee and Wellington Farm USA. Officials, from Crawford County and some of the other townships, were also on hand to display their current and future recreational initiatives.

After receiving the input, the group prioritized the list of the recreational projects for the community.

"We were pleased with the input we received and to see

everybody working together," said Chris Jones, chairman of the Grayling Recreation Association's Board of Directors. "Out of this, we feel we can put together a very good recreation plan for Grayling and everyone in Crawford County."

A recreation plan is required in order to apply for grants through the Department of Natural Resources (DNR) for funding.

The last county recreation plan was written in 1997, by former Crawford County Environmental Monitor Pat Merrill. The plan was amended in 1999.

Jones said the plan is required

to be updated every five years.

A draft will be completed, taken from the public workshop and surveys made available to the public. The draft of the plan will be available in August, when a public hearing will also be held, Jones said.

The final plan will be submitted to the DNR in September.

Planners from the Northeast Michigan Council of Governments are assisting county officials with the process.

The Crawford County Board of Commissioners agreed to spend up to \$8,000 to develop a recreation plan.

County recreation plan ready for approval

by Matt Seager
Staff Writer

It wouldn't be exactly true to say that the County Commission is all business. Sometimes they find themselves in the business of fun. After months of careful planning and organization, the county recreation plan has been drafted and is now available for public viewing.

"It's basically been the collaborative effort of a lot of people in the county," said County Commission Liaison Mike Lange.

This draft was developed from the input of a wide variety of organizations, clubs and even private citizens. Much of this input was gathered during a public workshop that was held in May.

The result is a highly detailed, 91 page document that examines the current state of Crawford County and takes a close look at its recreational needs. It is available for public viewing at <http://www.crawfordco.org/offices/recreation.htm>. The plan covers everything from snowmobile trails to fish hatchery renovations.

In addition to maintaining current projects, the plan provides for new goals as well. These five goals are outlined in detail on pages 71-72 of the plan that is available for viewing online.

Goal one is to "renovate the Grayling Fish Hatchery building and maintain the grounds." This includes replacing the foot bridge that serves the hatchery.

Goal two is to "develop the Crawford County Sports Complex so that it becomes a one-stop shopping for recreational sports in Crawford County." This is perhaps the most ambitious of the new projects outlined in the draft.

"I'm really excited about redeveloping the fairgrounds," said Lange.

The current Crawford County fairgrounds, located on the I-75 Business Loop near the Grayling High School, will be redeveloped to include the County Sports Complex.

Currently, there are sports fields located at various areas throughout the county, including Hanson Hills. The County Sports Complex will consolidate all outdoor sports fields into one area.

This includes a plan to build up to eight new soccer fields as well as an unspecified number of

baseball/softball fields. New roads, parking and ADA accessible rest rooms will be included in the project. Centralizing these fields is intended to make it much more convenient to experience outdoor sports in Crawford County.

"It will make it a lot easier for not only parents, but for groups that are visiting from out of town," said Lange.

Goal three is to "develop, maintain and improve the Wakeley Landing Property." The basic concept behind this goal is to provide the best possible experience for canoeists and anglers.

Goal four is to "continue to expand our non-motorized trail system within the county." This includes plans to develop miles of new bicycle paths as well as

new sidewalks throughout the county. A walk-under for the downtown bridge is included in this goal.

The final new goal is to "evaluate the recreational opportunities and challenges in adopting a county wide ORV ordinance." This basically calls for meetings to determine whether such an ordinance would be valuable to the community.

The economic ramifications of an ORV ordinance would also be under discussion.

This recreation plan will go before the county commission for final approval at their September meeting. Once a draft is approved, it will ensure that Crawford County remains eligible for state funding directed towards recreational projects.



The Crawford County Fairgrounds area is being redeveloped to include the County Sports Complex. In addition to the current Redskins football field, the complex will feature several new soccer and baseball fields as well as improved roads and rest rooms.

Attachment J

CRAWFORD COUNTY LAND (EXCERPT) Act 172 of 1913

32.223b Grayling recreation authority; lease of property by military board; description; examination of documents; sublease; use; limitations; termination of leases under § 32.223a.

Sec. 3b. (1) The state military board created by section 360 of Act No. 150 of the Public Acts of 1967, being section 32.760 of the Michigan Compiled Laws, may enter into a long term lease with the Grayling recreation authority, consisting of the city of Grayling, the township of Grayling, and the Crawford-Au Sable school district, and established and operating pursuant to Act No. 156 of the Public Acts of 1917, being sections 123.51 to 123.54 of the Michigan Compiled Laws, for 400 acres of land located in section 14, T26N, R4W, Grayling township in the county of Crawford, state of Michigan. All documents relative to the lease shall be examined by the attorney general both as to form and content.

(2) The Grayling recreation authority may sublease the property only after approval by the state military board and the attorney general. The Grayling recreation authority shall at all times make the tract of land available for use as a permanent encampment and a maneuvering ground for the militia of this state. The limitations contained in this subsection shall be stated in the lease agreement.

(3) Before a lease may be entered into under this section, all leases entered into under section 3a to a Michigan corporation upon approximately 1,200 acres of land shall be terminated.

History: Add 1976, Act 192, Imd. Eff. July 8, 1976.

Attachment K

County of Crawford

AMENDED AGREEMENT TO CREATE
A RECREATION AUTHORITY
PURSUANT TO ACT 156, P.A. 1917

WHEREAS the CITY OF GRAYLING, a municipal corporation, the TOWNSHIP OF GRAYLING, a municipal corporation, and the CRAWFORD-AUSABLE SCHOOL DISTRICT, a municipal corporation, are desirous of expanding the public recreation system created under Act 156, P.A. 1917, and specifically Section 1 and Section 3 thereof (being M.S.A. §5.2421 and §5.2423), for the purpose of operating a system of public recreation facilities; to include the COUNTY OF CRAWFORD, a municipal corporation, as a member; and to delegate the operation of the system to a recreation board to be known as the GRAYLING RECREATION AUTHORITY; and

WHEREAS the board of such authority shall be composed of nine (9) members who shall be appointed by the respective municipal corporations as follows:

- Two (2) by the CITY OF GRAYLING;
- Two (2) by the TOWNSHIP OF GRAYLING;
- Two (2) by the CRAWFORD-AUSABLE SCHOOL DISTRICT;
- Two (2) by the COUNTY OF CRAWFORD; and
- One (1) at large

said members also constituting the Board of Directors of said GRAYLING RECREATION AUTHORITY, a non-profit enterprise; and

WHEREAS the purpose of this organization is principally for the acquisition of approximately 286 acres of land described as being a part of Section 23 and the southerly 3/4 of Section 14 in Town 26 North, Range 4 West, Grayling Township, Crawford County, Michigan (excepting the South 1/2 of the Northwest 1/4 of Section 14, lying South and East of the M-93 right-of-way) formerly known as "Bear Mountain"; and further the acquisition from the ECONOMIC DEVELOPMENT ADMINISTRATION of certain ski facilities now located on property heretofore described, all subject to a certain Agreement and Lease dated March 16, 1977, between the STATE OF MICHIGAN acting through the State Military Board, as Lessor, and the GRAYLING RECREATION AUTHORITY, as Lessee (a copy of which is attached to and made a part of this Agreement), noting further as follows:

1. That the sublease between the GRAYLING RECREATION AUTHORITY, as sublessor, and LEE ALLEN BARKLEY d/b/a LITTLE SMOKEY RAILROAD, as sublessee, has been cancelled and the buildings abandoned, same

Attachment K

being conveyed by gift deed back to the GRAYLING RECREATION AUTHORITY;

2. That the premises and lands contained in the sublease between the GRAYLING RECREATION AUTHORITY, as sublessor, and FRED BEAR MUSEUM, INC., (formerly a subsidiary of Victor Comptometer Corp.) as sublessee, have been abandoned;
3. At the date hereof there exists a certain sublease between the GRAYLING RECREATION AUTHORITY, as sublessor, and PINE KNOLL, INC., as sublessee; and
4. There also exists a certain sublease between the GRAYLING RECREATION AUTHORITY, as sublessor, and the GRAYLING ARCHERY CLUB, as sublessee.

NOW, THEREFORE, the respective municipalities do hereby agree by and between themselves, subject to a formal Resolution by their respective Boards, to create such a recreation authority to be known as the GRAYLING RECREATION AUTHORITY which will be subject to Act 156, P.A. 1917, as amended, and such rules and regulations as may be adopted from time to time thereunder.

DATED this 4th day of April, 1983.

CITY OF GRAYLING

By:

Joseph W. Mayford
City Manager & Clerk

TOWNSHIP OF GRAYLING

By:

Margaret J. Bolton
Township Clerk

CRAWFORD-AUSABLE SCHOOL DISTRICT

By:

Paul B. Long
Assistant Superintendent

COUNTY OF CRAWFORD

By:

Charlotte H. Hatcher
Chairperson