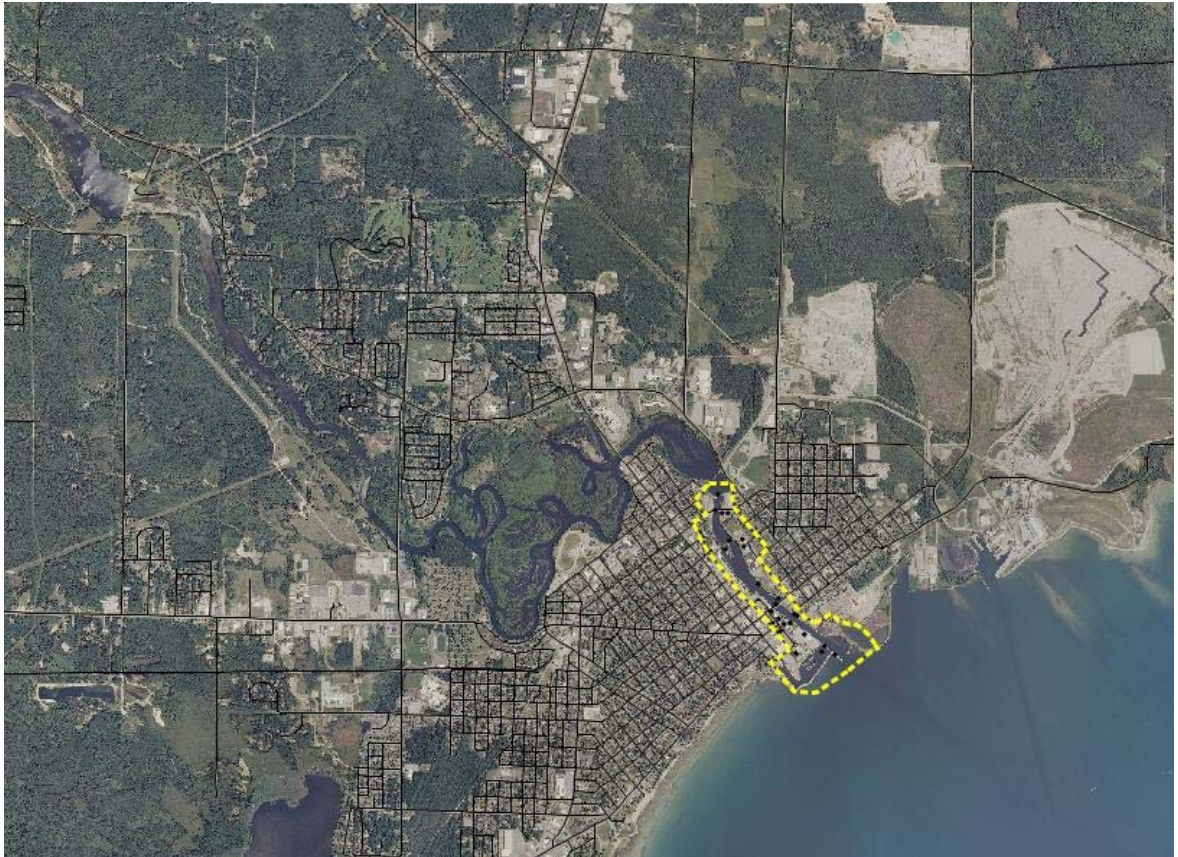


Hazard Mitigation Plan

ALPENA COUNTY MICHIGAN



2014

**Alpena County Emergency
Services**
720 West Chisholm St., Suite 13
Alpena, MI 49707

ALPENA COUNTY HAZARD MITIGATION PLAN

Alpena County, Michigan

Prepared for:

Alpena County
and the
Communities in Alpena County

Prepared by:

Northeast Michigan Council of Governments
121 East Mitchell Street
P. O. Box 457
Gaylord, Michigan 49735

Assisted by:

Alpena County Emergency Management
Alpena County LEPC

Adopted:

**ALPENA COUNTY
HAZARD MITIGATION PLAN**

TABLE OF CONTENTS

| | |
|--|------|
| CHAPTER 1 - INTRODUCTION | 1-1 |
| Purpose and Approach | 1-2 |
| Information Collection | 1-2 |
| Geographic Information System Support..... | 1-3 |
| Increased Community Awareness..... | 1-3 |
| Hazard Mitigation Steering Committee | 1-3 |
| Community Involvement..... | 1-3 |
| Governmental Participation..... | 1-4 |
| Public Input..... | 1-4 |
| Summary of Review and Plan Adoption..... | 1-4 |
| Summary of Recommended Plan Implementation Process..... | 1-4 |
| | |
| CHAPTER 2 - ENVIRONMENT | 2-1 |
| Overview..... | 2-1 |
| Climate | 2-1 |
| Severe Weather | 2-3 |
| Geology | 2-4 |
| Topography..... | 2-4 |
| Soils | 2-5 |
| Water Resources..... | 2-7 |
| Surface Water | 2-7 |
| Ground Water..... | 2-7 |
| Wetlands..... | 2-9 |
| Woodlands | 2-9 |
| Sites of Environmental Contamination..... | 2-13 |
| Discharge Permits | 2-13 |
| | |
| CHAPTER 3 - POPULATION AND ECONOMIC CHARACTERISTICS | 3-1 |
| Population Overview | 3-1 |
| Population by Municipality | 3-1 |
| Seasonal Population | 3-1 |
| Age Distribution | 3-2 |
| Disability Status | 3-3 |
| Economic Overview | 3-4 |
| Income & Poverty | 3-4 |
| Agriculture | 3-7 |
| Housing Stock | 3-7 |
| | |
| CHAPTER 4 - LAND USE CHARACTERISTICS | 4-1 |
| Overview..... | 4-1 |
| Existing Land Use Categories | 4-1 |

| | |
|--|------------|
| Planning & Zoning..... | 4-4 |
| Hazardous Land Uses and Areas..... | 4-5 |
| CHAPTER 5 - COMMUNITY SERVICES AND FACILITIES | 5-1 |
| Overview..... | 5-1 |
| Utilities | 5-1 |
| Water and Sewer..... | 5-2 |
| Solid Waste..... | 5-3 |
| Transportation..... | 5-4 |
| Roads..... | 5-4 |
| Airports | 5-6 |
| Railroads | 5-6 |
| Marine | 5-6 |
| Transit..... | 5-7 |
| Schools | 5-8 |
| Libraries..... | 5-10 |
| Media | 5-11 |
| Medical Facilities | 5-11 |
| Public Safety | 5-12 |
| Early Warning & Siren Systems..... | 5-13 |
| County Facilities..... | 5-13 |
| Human Service Organizations..... | 5-16 |
| CHAPTER 6 -HAZARD IDENTIFICATION | 6-1 |
| Overview..... | 6-1 |
| Hazard Descriptions | 6-1 |
| Flooding Hazards..... | 6-1 |
| Hazardous Materials -- Fixed Site | 6-4 |
| Hazardous Materials -- Transportation..... | 6-5 |
| Air, Land & Water Transportation..... | 6-5 |
| Fire Hazards..... | 6-5 |
| Severe Winter Hazards..... | 6-8 |
| Severe Summer Weather | 6-9 |
| Severe Winds | 6-11 |
| Extreme Temperatures..... | 6-15 |
| Drought..... | 6-15 |
| Other Natural Hazards | 6-16 |
| Technological Hazards | 6-18 |
| Societal Hazards..... | 6-21 |
| Local Jurisdictions..... | 6-22 |
| Mitigation Planning Sectors..... | 6-22 |

| | |
|---|------|
| CHAPTER 7 - HAZARD RISK AND VULNERABILITY ASSESSMENT | 7-1 |
| Hazard Ranking Methodology | 7-1 |
| Evaluation Criteria | 7-1 |
| Hazard Analysis Evaluation Measure Benchmark Factors | 7-2 |
| Risk Assessment and Vulnerability Assessment Summary | 7-7 |
| Principal Vulnerabilities | 7-8 |
| Dam Failure | 7-8 |
| Riverine and Urban Flooding | 7-18 |
| Wildfire | 7-19 |
| | |
| CHAPTER 8 - COMMUNITY GOALS AND OBJECTIVES | 8-1 |
| Overview | 8-1 |
| Goals and Objectives | 8-1 |
| | |
| CHAPTER 9 - MITIGATION STRATEGIES AND PRIORITIES | 9-1 |
| Identification of Mitigation Actions | 9-1 |
| Evaluation and Prioritization of Mitigation Actions | 9-2 |
| Capability Assessment | 9-3 |
| | |
| CHAPTER 10 - ADOPTION AND IMPLEMENTATION | 10-1 |
| Adoption Process | 10-1 |
| Plan Implementation | 10-1 |
| Roles and Responsibilities | 10-1 |
| Process for Monitoring, Evaluating and Updating | 10-2 |
| Process to Incorporate into Local Planning Activities | 10-3 |
| Ongoing Public Participation | 10-3 |
| Resolution | 10-4 |
| | |
| APPENDIX A, Hazard Definitions | A-1 |

LIST OF FIGURES

| | |
|--|------|
| Figure 1.1 State Location Map, Alpena County..... | 1-1 |
| Figure 2.1 Michigan Average Snowfall..... | 2-3 |
| Figure 2.2 Northern Michigan Karst Features..... | 2-5 |
| Figure 2.3 Alpena County Building Constraints..... | 2-6 |
| Figure 2.4 Alpena County Surface Water..... | 2-8 |
| Figure 2.5 Alpena County Wetlands..... | 2-10 |
| Figure 2.6 City of Alpena Area Wetlands | 2-11 |
| Figure 2.7 City of Alpena Area Forest Cover | 2-11 |
| Figure 2.8 Alpena County Forest Cover | 2-12 |
| Figure 3.1 Alpena County Median Age 1990 – 2010 | 3-2 |
| Figure 3.2 Alpena County Unemployment Rate..... | 3-5 |
| Figure 3.3 Northeast Michigan Household Income | 3-6 |
| Figure 4.1 Existing Land Use..... | 4-2 |
| Figure 4.2 Alpena County Hazard Map | 4-7 |
| Figure 5.1 Alpena County PASER Rating | 5-5 |
| Figure 5.2 City of Alpena Shipping 1991 - 2009 | 5-6 |
| Figure 5.3 Alpena County Siren Warning System | 5-13 |
| Figure 5.4 Alpena County Infrastructure | 5-18 |
| Figure 6.1 Location of Norway Point and Four Mile Dam..... | 6-2 |
| Figure 6.2 Seven Mile or Norway Point Dam..... | 6-3 |
| Figure 6.3 Alpena Pine-Oak Forests | 6-8 |

| | |
|--|---------------|
| Figure 6.4 Alpena County Tornado | 6-13 |
| Figure 6.5 Alpena County Oil & Gas Wells | 6-19 |
| Figure 6-6 Alpena Township Hazards Map..... | 6-28 |
| Figure 6-7 Green Township Hazards Map..... | 6-30 |
| Figure 6-8 Long Rapids Township Hazards Map | 6-32 |
| Figure 6-9 Maple Ridge Township Hazards Map | 6-34 |
| Figure 6-10 Ossineke Township Hazards Map..... | 6-36 |
| Figure 6-11 Sanborn Township Hazards Map | 6-38 |
| Figure 6-12 Wellington Township Hazards Map | 6-40 |
| Figure 6-13 Wilson Township Hazards Map | 6-42 |
| Figure 7-1 thru 7-8 Sunny Day Failure of Seven Mile Dam..... | 7-9 thru 7-16 |
| Figure 7-9 Washington Bridge/Ninth Street Dam..... | 7-18 |

List of Tables

| | |
|--|------|
| Table 2.1 Alpena County Climate Data 1981 - 2010 | 2-2 |
| Table 2.2 Alpena County Surface Water Composition | 2-7 |
| Table 2.3 Alpena County Contamination Sites..... | 2-14 |
| Table 2.4 Air Discharge Permits | 2-17 |
| Table 2.5 NPDES Permits | 2-16 |
| Table 3.1 Population for Alpena County and Municipalities 1990 - 2000..... | 3-1 |
| Table 3.2 Age Distribution by Municipality for Alpena County 2010..... | 3-3 |
| Table 3.3 Disability Status in Alpena County..... | 3-4 |
| Table 3.4 Median Household Income 2009 | 3-4 |
| Table 3.5 Alpena County Median Household Income by Age | 3-5 |
| Table 3.6 Poverty Rates 2008 - 2010..... | 3-6 |
| Table 3.7 Alpena County Agricultural Lands | 3-7 |
| Table 3.8 Alpena County Agricultural Products..... | 3-7 |
| Table 3.9 Alpena County Locally Important Products | 3-7 |
| Table 3.10 Alpena County Housing Counts and Occupancy Status..... | 3-8 |
| Table 3.11 Alpena County Year Structure Built | 3-8 |
| Table 5.1 Alpena County Utility System..... | 5-1 |
| Table 5.2 Alpena County 2011 PASER Results | 5-4 |
| Table 5.3 Alpena Public Schools 2009 - 2010 | 5-8 |
| Table 5.4 Private Schools in Alpena County..... | 5-9 |
| Table 5.5 Private Schools in Alpena County..... | 5-12 |

| | |
|--|---------------|
| Table 5.6 Alpena County Building Inventory | 5-14 |
| Table 6.1 Dam Design Information | 6-2 |
| Table 6.2 Weather Conditions Spring 1998..... | 6-3 |
| Table 6.3 Alpena County Fire Staffing | 6-6 |
| Table 6.4 Number of Wildfires by County 2001 – May 2012..... | 6-7 |
| Table 6.5 Alpena County Snowfall Extremes 1991 - 2010 | 6-9 |
| Table 6.6 Lightning Related Deaths 1959 – July 2001 | 6-11 |
| Table 6.7 Severe Windstorms in Northern Michigan | 6-14 |
| Table 6.8 Economic Impact of Drought..... | 6-17 |
| Table 7.1 Alpena Hazard Evaluation Criteria | 7-1 |
| Table 7.2 Alpena County Hazard Rating | 7-5 |
| Table 7.3 Alpena County Risk and Vulnerability Assessment Summary..... | 7-7 |
| Table 9.1 thru 9.18 Mitigation Actions..... | 9-3 thru 9-20 |