

APPENDIX C

FREDERIC TOWNSHIP RECREATION PLAN 2020-2024

The 2020-2024 Frederic Township Recreation Plan can be found on the following pages. The Frederic Township Board adopted the plan on January 14, 2020. The Michigan Department of Natural Resources approved the plan on March 18, 2020 with an expiration date on December 31, 2024.

FREDERIC TOWNSHIP

Recreation Plan 2020-2024



Adopted 1/14/2020

Presented by:

Frederic Township Parks and Recreation Committee

Anne Goscicki, Lori Johnson, Bob Pollack, William Sharp, Michelle Stanley, Butch Weaver

Frederic Township Planning Commission

Francis Hummel, Karen Harrison, Anne Goscicki, Lori Johnson, Ron Chapel, Michele Stanley, Danny McCoy

Assisted by:



Northeast Michigan Council of Governments

Contents

- Introduction 1
- Community Description..... 1
 - Location and Geographic Context 1
 - Population and Housing 1
 - Natural Resources 4
 - Existing Land Use..... 6
- Recreation Planning in Frederic Township 8
- Administrative Structure and Funding in Frederic Township..... 8
- Status Report of all Grant-Assisted Parks and Recreation Facilities..... 9
 - Recreation Inventory..... 10
- Description of the Planning and Public Input Process 15
- Goals and Objectives..... 16
 - Action Program..... 17
 - Rationale for Township Park Improvements..... 18
 - Rationale for Trail and Access Site Improvements..... 18
- Plan Review and Adoption 19

Introduction

This document, the Frederic Recreation Plan Update - 2019, presents a strategy for future recreational development and programming. This plan update was prepared by the Frederic Township Recreation Committee and is an update of the 2013 Recreation Plan, prepared in accordance with the requirements of the Michigan Department of Natural Resources.

VISION

We visualize a well-serviced and -maintained community that is attractive as a desirable place to live and raise a family, a community whose residents uniformly enjoy a good quality of life and take pride in their surroundings. To further that vision we propose to enhance recreational opportunities at our two community parks, improve public access to the Au Sable River, and encourage recreational programming. In addition, we see Frederic Township growing modestly as a tourist destination with convenient facilities for anglers, canoeists, hikers, hunters, bird-watchers, winter sports enthusiasts and others. We also recognized a need to monitor and maintain the high quality of our natural resources, to allow enjoyment of such in an environmentally sensitive manner.

Community Description

Location and Geographic Context

Frederic Township is one of six units of government in Crawford County. The Township occupies 72 square miles of glacially shaped terrain near the center of the northern half of Michigan's Lower Peninsula (Figure 1). Its gently rolling rural character and heavily forested landscape drained by two magnificent waterways make it very attractive for outdoor recreation as well as year-round and vacation living. Proximity to growing population centers and the facilities they offer add to the township's appeal and create the inevitable challenges represented by potential encroachment.

Accessed from the south and north by I-75 and otherwise served by M-72, County Road-612 and Old US-27 (once the state's main north-south artery), the township falls within easy vehicular reach of several comparatively large communities. Its seat of government, the unincorporated village of Frederic, lies 9 miles north of Grayling, 17 miles south of Gaylord and 25 miles east of Kalkaska (Figure 1); additionally, the Detroit and Mackinac Railway, one of the few active rail corridors left in the region, parallels Old US-27 through Frederic and the eastern part of the township.

Lying as it does in the climate-altering shadow of Lake Michigan and at elevations ranging from 1,100 to 1,400 feet above mean sea level, the township enjoys relatively cool summers and endures moderately harsh winters, in which annual snowfall amounts of 120 inches are not uncommon. As its early settlers learned to their eventual dismay, deforested township land with its poor soils and short growing seasons do not favor conventional farming.

Population and Housing

Frederic Township was home to 1,305 persons according to the American Community Survey 2013-2017 5-year estimates, the latest year for which census estimates are available. The 2010 US Census found there were 1,341 year-round residents in Frederic Township (Table 1). In 2010, the township was fifth in

population among the seven jurisdictions comprising Crawford County, and third in density (behind Grayling and Beaver Creek Townships) at 18.6 residents per square mile. As in many rural jurisdictions throughout northern Michigan, part-time or seasonal residents (absentee landowners) make up a significant part of the township’s taxpayer base. Approximately 48 percent of the housing units in Frederic Township are classified as “for seasonal, recreational or occasional use” (2010 Census).

Table 1 - Population of Crawford County (MI), by Jurisdiction, Census years of 1970-2010

Jurisdiction	Area ¹	1970	1980	1990	2000	2010
Beaver Creek Township	72		745	1,175	1,486	1,736
Frederic Township	72	782	1,142	1,287	1,401	1,341
Grayling Township	180		4,019	5,647	6,516	5,827
Grayling City	(combined)		1,792	1,944	1,952	1,884
Lovells Township	108		316	420	578	626
Maple Forest Township	36		355	407	498	653
South Branch Township	108		1,096	1,380	1,842	2,007
Crawford County	576	6,482	9,465	12,260	14,273	14,074

¹Square miles Source: U. S. Census Bureau

Largely in correspondence with the distribution of private land, permanent and seasonal township residents tend to be aggregated in four distinct and widely separated areas or neighborhoods: the Manistee and Au Sable River corridors, Frederic village and the township’s far northeast corner. This very uneven distribution of its rural population creates for township government a perennial challenge from the standpoint of political representation, especially of those residing in the more remote enclaves. Also, the problem is compounded by the difficulty in communicating effectively on local issues with absentee property owners. There is typically a fairly high rate of turnover of absentee property owners, especially in the Manistee River corridor.

Location Map, Frederic Township

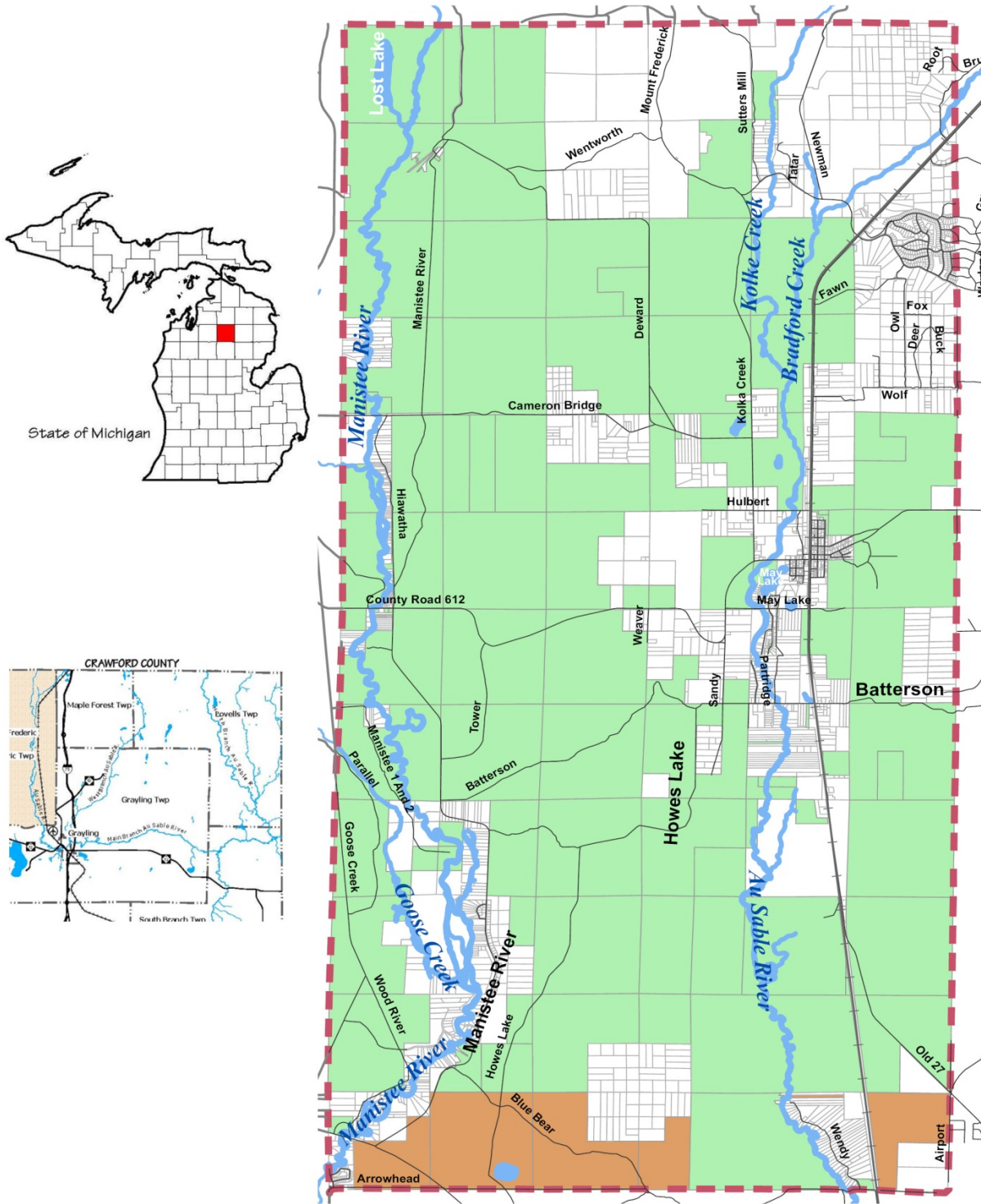


Figure 1 – Location Map

Mirroring that of Crawford County as a whole, the age distribution of Frederic Township residents indicates an older-than-average population (Table 2). The median age in Frederic Township is 47.5 years old compared with 47.7 for Crawford County and 38.4 for the State as a whole. In many rural areas this often suggests a reduced or, at least, a very limited revenue-enhancing potential for meeting community needs, not to mention a greater-than-average demand for senior-related services.

Table 2 – Population of Township, County and State, by Age Groups (in years), Census Year 2010

Jurisdiction	<5 years		5–17		18–24		25–44		45–64		65+		Total
	No.	%	No.	%	No.	%	No.	%	No.	%	No.	%	
Frederic Township	62	4.6	219	16.3	77	5.7	266	19.8	456	34.0	261	19.5	1,341
Crawford County	664	4.7	2,131	15.1	905	6.4	2,725	19.4	4,721	33.5	2,928	20.8	14,074
State of Michigan		6.0		17.7		9.9		24.7		27.9		13.8	

Source: U.S. Census Bureau

Statistics from the 2010 Census show a total of 1,231 housing units for Frederic Township. Seventy six percent are single-family units, nearly twenty three percent are mobile homes and less than two percent are multifamily units. When compared to the State as a whole, seasonal housing in the Township and County is a significant proportion of housing, as shown in Table 3.

Table 3 – Housing Characteristics, Frederic Township, Crawford County and Michigan – 2000 and 2010

Jurisdiction	Total Units			Seasonal Units		% Seasonal	
	2000	2010	% Change	2000	2010	2000	2010
Frederic Township	1,092	1,231	12.7	503	586	46.1	47.6
Crawford County	10,042	11,092	10.5	4,112	4,535	40.9	40.8
State of Michigan	4,234,279	4,532,233	7.0	233,922	263,071	5.5	5.8

Source: U.S. Census Bureau

Natural Resources

The public—largely through reversion—owns approximately 70 percent of Frederic Township, see Figure 1. Most of these lands are classified as forestland that are managed by the Michigan Department of Natural Resources (MNDR) for fiber production and recreation (Table 5), and over which the township has little, if any, control.

The surface geology in Frederic Township consists primarily of two main categories. The glacial outwash sand, gravel and postglacial alluvium is located primarily in wide bands that follow the major rivers. The ice-contact outwash sand and gravel is located in the other areas of the Township. This composition of sand and gravel is why the area is not well suited to agricultural practices.

Frederic Township has extensive forest areas, much of which is in public ownership as depicted in green on Township map shown in Figure 1. The township’s public forests, which share regionally in the support of a thriving fiber-products industry, represent extensive wildlife habitat and provide significant opportunity for outdoor recreation. Devastated by rampant exploitation at the turn of the 20th Century, they—mostly second- and third-growth stands—are today largely recovered and being carefully managed for long-term sustainability.

The township straddles two watersheds, namely those drained by the Au Sable and Manistee Rivers, both world-famous for their recreational fisheries. Equally valuable are the shared resources that underlie the township: a substantial reservoir of freshwater contained by the earth’s highly pervious mantle typical of northern Lower Michigan, together with several deeper oil- and gas-bearing geological formations.

Table 4 – Natural resources of Frederic Township, by type, name, extent and description

Type	Name	Extent	Description
Forest Public, managed	Au Sable State Forest	31,766 acres	Subdivided into 21 management compartments, that part of the forest in Frederic Township consists mainly of mixed-age aspen (22%), 50- to 100-year-old oaks (19%), 25- to 75-year-old jack pine (15%), 50- to 75-year-old northern hardwoods (15%) and 30- to 80-year-old red pine (10%); other cover types make up the remainder. It includes (in the township’s northwest sector) roughly 2,400 acres of the Deward Management Area, delineated in 1986 to give added protection to the Manistee River corridor. The forest also provides habitat for good populations of game, such as deer, grouse and turkey, and opportunity for a wide variety of outdoor recreation.
Private, largely unmanaged	—	≈11,000 acres	Similar in cover types to adjoining public land; used mainly for temporary residential and recreational purposes.
Soils	—	Entire	Highly permeable sands with little gravel, frequently underlain by lenses of clay and silt; typical of glacial moraines and outwash plains. Must be carefully evaluated <i>before</i> proposed accommodation of development.
Surface Water Streams	Upper Au Sable River (Natural River designation)	9.5 miles	High-quality, very stable, low-discharge coldwater stream beginning close to system headwaters (in Otsego County) at confluence of Bradford (3.5 mi.) and Kolka (4.0 mi.) Creeks and coursing north to south in east half of township. Home to marginal self-sustaining populations of brook and brown trout, which support only a modest fishery; aquatic habitat diminished by excessive streambed sand deposition.

Streams	Upper Manistee River (Natural River designation)	16.0 miles	Equally high-quality, exceptionally stable, moderate-discharge cold water stream entering township just below its origin (in Antrim/Otsego Counties) and draining north to south in west half of township (Fig. 2), with Goose Creek (3.0 mi.) being its only significant tributary. Home to excellent self-sustaining stocks of brook and brown trout, which support an important and renowned fishery.
Lakes and ponds	Cranberry, May, Camel, Sand Hill, Howes, Lost	<150 acres	Small bodies of water, mostly on public land, the largest of which is Lost Lake (≈45 acres) in the northwestern-most section of the township. Each harbors marginal populations of cold- and/or warm water game fishes.
Ground Water	—	Entire	Large, high-elevation aquifer overlain by highly permeable soils; expressed by two surface drainages—Manistee and Au Sable—whose boundary splits the township almost evenly from north to south; some interbasin exchange is speculated.
Mineral Gas	Antrim Formation	36 wells ¹	Part of a large regional and fairly productive reservoir; projected life: 20-25 years.
Oil	Niagaran Formation	37 wells ¹	Part of a regional and moderately productive reservoir.
Gravel	--	<5 acres	One State-managed pit in northern Frederic Township
Fish and Wildlife	—	Entire	Variably marginal to excellent stocks of cold- and warm-water fishes in surface waters as noted above. Generally good but annually fluctuating populations of both resident and migratory wildlife—notably whitetail deer, waterfowl, turkey, ruffed grouse, fox, coyote, snowshoe hare, cottontail rabbit, occasional black bear, various furbearers, raptorial birds, notably bald eagle, and passerine birds, notably Kirtland’s warbler.

¹Confined to North Frederic Township Sources: MDNR, USGS

Existing Land Use

The following map shows the land cover use for Frederic Township as depicted in the 2014 Township Master Plan. Upland forests cover over three quarters of the Township. The dominant forest associations are maple, aspen and pine. Much of the forested lands are on public property owned by the State of Michigan or the Federal government. Upland openings, lowland forests and non-forested wetlands account for another 10 percent of the township’s area. These forestlands and wetlands combined with two blue ribbon trout streams support natural resource-based recreational activities.

Frederic Township Existing Land Use/ Land Cover Map

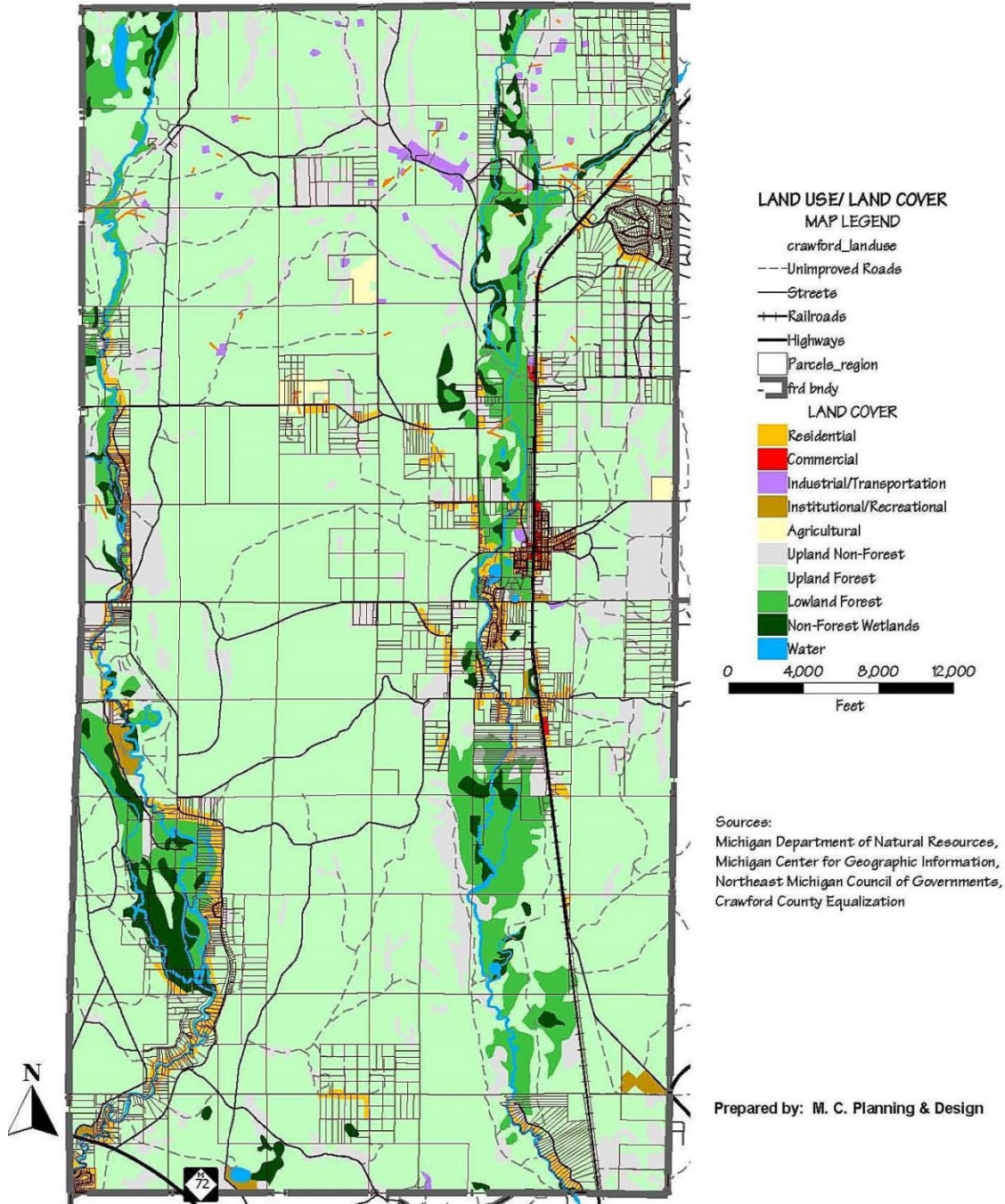


Figure 2 - Existing Land Use

Recreation Planning in Frederic Township

The Township provides limited recreation services and facilities to residents and visitors. The mix of Township owned facilities such as the Township Hall Community Center, Eagle Park and Betty Sadjak Memorial Park, along with other publicly owned State Forest lands and campgrounds and privately owned recreation facilities offers a wide range of passive and active recreational opportunities. A description of these facilities is included in the recreation inventory, which follows. Frederic Township intends to continue providing recreation services to its residents and visitors, but also plans to make improvements at the existing facilities, including compliance with Americans with Disabilities Act (ADA), which mandates accessibility standards for citizens who have mobility difficulty.

As a recreation service provider, the Township recognizes the importance of planning for future recreation services and facilities. A major factor in the provision of any service is the question of how projects will be funded. One possible source of funding for recreation projects is through grants available from Michigan Department of Natural Resources (MDNR).

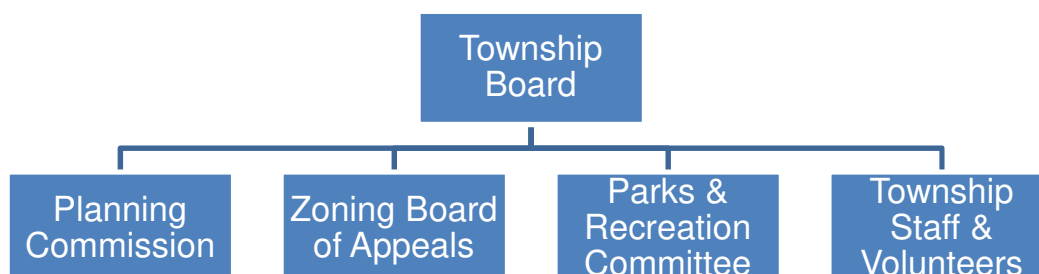
To become grant eligible for MDNR funding, a community must have an approved recreation plan. Components of a MDNR approved recreation plan include:

- Community Description
- Recreation Inventory
- Administrative Structure
- Description of the Planning Process
- Action Program
- Basis for the Action Program
- Plan Review and Adoption

Administrative Structure and Funding in Frederic Township

Frederic Township established a separate Parks and Recreation Committee in 2012 that oversees the general operation of the township parks and recreation programs. This Committee provides recommendations regarding park policies and projects to the Township Board.

The Parks and Recreation Committee and Township staff serve as a community sounding board on recreation matters, and bring the concerns of the residents to the Township Board for consideration. Routine park maintenance is handled by the Township staff, contractors and volunteers who operate under the direct authority of the Township Board. The ultimate decision-making authority and responsibility for all park related projects resides with the Township Board.



Volunteers will be an integral part of the recreation projects in Frederic Township. While there is not a designated volunteer group, volunteers are solicited on a project by project basis to provide some of the labor for the Township “in-kind” match on projects as appropriate.

Relationships: This recreation plan covers Frederic Township, while the Crawford-Au Sable School District serves a larger geographic area than Frederic Township. The school district still owns some property for storage which is associated with the former elementary school in Frederic village. The majority of the former elementary school property including the main building has been transferred to Frederic Township.

In order to effectively develop local routes that connect with the larger trail system in northern Michigan, Frederic Township will be working cooperatively with the Top of Michigan Trails Council, Northeast Michigan Council of Governments (NEMCOG), MDNR, and Crawford County to pursue the development of non-motorized trails and bike lanes. Additionally, the Township will work cooperatively with the Au Sable Valley Snowmobile Association and other organizations to expand the network of trails for snowmobiles.

The Frederic Township Recreation Plan does include provisions to continue and enhance the working relationship with the Michigan Department of Natural Resources as related to the state-owned recreation facilities located within Frederic Township.

Table 5. Township Budget and Recreation Expenditures, 2016-2019

Frederic Township Budget			
FY Ending June 30	2016-2017	2017-2018	2018-2019
Recreation	\$56,000	\$37,500	\$30,000
Total Township	\$1,393,024	\$1,647,878	\$1,955,377
Expenditures			
Recreation	\$49,664	\$29,250	\$8,250
Source: Frederic Township Balance Sheets, 2016-2019			

Status Report of all Grant-Assisted Parks and Recreation Facilities

The Township received a Recreation Passport grant in 2015 for development at Betty Sadjak Park. The development included a basketball court, an accessible play structure, a vault toilet structure, picnic tables, benches, grills and landscaping.

Frederic Township has not previously pursued or received grants to assist with the acquisition of park and recreation facilities. Within Frederic Township, the Crawford County Road Commission has received MDNR funding to study and plan to determine the best route for the Iron Belle Trail through Frederic Township. According to MDNR records, no Trust Fund grants have been received to acquire or develop any park or recreation facility in the Township.

Recreation Inventory

An inventory of existing recreation facilities located in Frederic Township is provided below. Sites are grouped according to ownership. Township owned facilities are listed first, then other public sites, privately owned recreation sites, and finally river access sites. Each listing is followed by a brief description of that location. Figures 3 and 4 illustrate the location of the public recreation sites and trails.

Frederic Township owns two recreation properties, the Township Community Center with the adjacent Eagle Park and the Betty Sadjak Memorial Park near the fire hall.

Table 6. Facilities Owned and/or Operated by Frederic Township

Name	Facilities	Needs for ADA Compliance (Accessibility Rating)
Betty Sadjak Memorial Park	Playground, picnic tables, basketball court, walking path and gazebo	None (2)
Frederic Township Community Center with Eagle Park	Meeting rooms, offices, Full kitchen, Gymnasium, Picnic area, playground/tot lot and multi-purpose fields	None (2)
Frederic Community Library (in Community Center building)	Stacks, computer area	None (2)

Table 7. Public Recreation Facilities in Frederic Township

Name	Recreation Sites Location Key (unless specified- Figure 3)	Facilities / Amenities
Upper Manistee River State Forest Campground	D	30 campsites, 10 walk-in sites, canoeing, fishing, group camp for canoeists
Goose Creek Trail Camp	F	campsites, canoeing, hiking, horseback riding, wildlife viewing, fishing—max 200 individuals
Manistee River Bridge Campground at M72	E	23 campsites, canoeing, fishing, canoe access
Frederic Snowmobile Trail Head CR612 east of Old 27	See Figure 4	Parking lot and trail access
Snowmobile Trail Head CR 612 near Manistee River	See Figure 4	Parking lot and trail access
Frederic Loop Trail	See Figure 4	ORV trail

Table 8. Private Recreation Facilities in the Township

Name	Recreation Sites	Facilities
------	------------------	------------

	Fig 3 Key	
Trails Campground	B	Campground, showers, laundry
Shel-Haven Canoe Rental	A	Manistee River canoe, kayaks & tubes rentals, snacks & souvenirs.
Whispering Pines	C	Campground, cabins and showers

Table 9. River Access Sites in Frederic Township, Key to Figure 2 Map

Au Sable River			
Map Key	Name	Location	Access considerations
1	CR612	Between Old 27 and Kolke Creek Road, center of Frederic	Improved access site on the north side of the road. Stairs to river. Limited parking.
2	Old Mill Site	Between CR612 and May Lake Road	Access on the east side is via a two track just east of the river. Access on the west side of the river is via 2 two track trails off of CR612 and one two track off of May Lake Road. Parking is limited but adequate.
3	Batterson Road	Between Old 27 and Sand Hill Road	Access is via a stairway on the south side of the road. Parking is limited.
4	MacArthur Property	To the west off Old 27 at a marked railroad crossing sign (two track trail has no name designation).	An adequate parking area is approximately one mile off Old 27. There is a short walk to the river.
Upper Manistee River			
5	Deward Area	There are multiple access sites off N. Manistee River Road. Access is via a two track trail. Many of the sites have been identified by "Observation Signs" that look like binoculars. In addition there is one access site on the west side of the river.	There is limited parking at all sites and a walk back to the river. A couple of the sites have stairs down to the river.
6	Cameron Bridge	Between N. Manistee River Road and Deward Road on Cameron Bridge Road.	Access is on the north side of the river. Parking is very limited.
7	CR 612 Bridge	Access via stairs at SE corner of bridge.	Parking along road, seasonal temporary restroom facility (port-a-potty).
8	Goose Creek Campground	On the west side of Manistee River Road. There is a sign that marks the campground.	There is adequate parking and stairs and a ramp to the river. Canoes and kayaks have to be carried to the river.
9	Upper Manistee Campground	On the west side of the river off Goose Creek Rd. The campground is marked.	Access to the river is a short walk. There is adequate parking.

10	Loggers Fish Access	This access is marked and on the west side of Manistee River Road.	There is limited parking and a short walk to the river.
11	Manistee River Bridge Campground	On the west side of the river off M-72.	There is limited parking and sites where a canoe or kayak could be launched. The bank is relatively steep.
12	M-72 Access site	This is on the SE corner of the river off M-72.	There is limited parking.

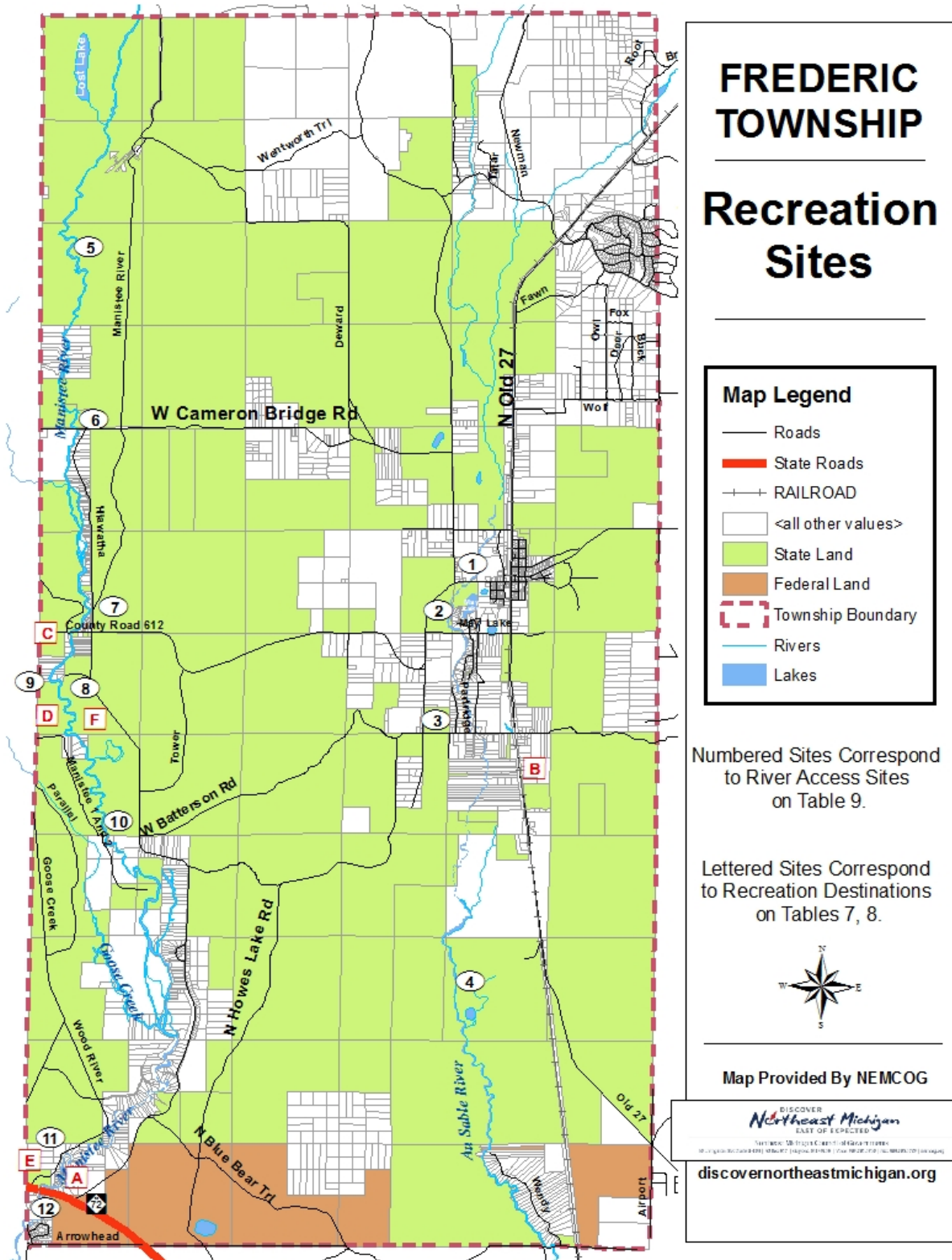


Figure 3 – Recreation Sites Map

Used with written permission.

Figure 4. Frederic Township Snowmobile and ORV Trails.

Grayling Region 4-Season Recreation Map- 2011-12
 Frederic Township- Excerpt for Snowmobile and ORV Trail Locations



Description of the Planning and Public Input Process

Planning Process

The Parks and Recreation Committee was the entity responsible for overseeing the update of the Recreation Plan. The committee began the process in November of 2018 by hosting a public input workshop. The Committee worked on various ideas during the following year and decided to update the plan during the summer of 2019. They met in early November of 2019 to discuss and revise the plan. NEMCOG assisted the township's committee and the Planning Commission in assembling a draft plan. The Parks and Recreation Committee met jointly with the Township Planning Commission to review the draft and release the draft for public review.

The preliminary draft plan was posted on the Township website and made available at the Library on November 20, 2019. Frederic Township held a public hearing on January 8th, 2020. A legal notice was published in the Crawford County Avalanche newspaper at least 30 days prior to the public hearing to allow citizens ample time to review and comment on the draft plan. A web posting helped announce the availability of the draft plan. Minutes from the public meetings and public hearing minutes are included in Appendix A. The Recreation Plan was adopted by the Frederic Township Board of Trustees on January 14th, 2020.

Public Input

Public input was gathered through a 2018 public workshop and then a survey which was made available both in hard copy and on-line in October of 2019. There were a series of Parks and Recreation Committee public meetings as well as an advertised public hearing on the Recreation Plan. Minutes from the various meetings and public hearing are provided.

The Frederic Township Parks and Recreation Committee prepared a survey for general planning purposes to gauge public support for various recreational improvements. A total of 20 surveys were completed. A summary of the results are located on the Township's website at www.frederictownship.org or on NEMCOG's document library website at: <http://www.discovernortheastmichigan.org/docview.asp?did=662>

Goals and Objectives

The recreational goal and objectives presented below are the result of the Parks and Recreation Committee planning process, the public input received during that process, and the further refinement and expansion during the subsequent recreation plan development.

<i>Recreation Goal</i>	
GOAL: <i>Provide and maintain recreation lands and facilities for safe access and enjoyment by residents and visitors of all ages and abilities.</i>	
OBJECTIVES:	
A.	Recreation Paths: Pursue extension of the Crawford County multiuse pathway through Frederic up to Otsego State Park to provide a direct connection to Grayling and points north. Where the pathway comes through the Village of Frederic a streetscape with enhanced street lamps and landscaping should be built to compliment the pathway and encourage investment in Frederic.
B.	Non-motorized routes: Ensure adequate routes exist for safe and enjoyable non-motorized travel throughout the Township, especially along desirable routes.
C.	Streetscape Improvements: Create a vibrant downtown that encourages connections to the Township’s recreational assets as well as the downtown businesses.
D.	Recreation Inventory and Publication: Publish online and in print an inventory for residents and visitors of the principal access points to public camping, picnicking, angling, historic interest and hiking venues.
E.	Historic Interpretation: Establish a Frederic history display/museum in the Township Hall and install signs of historic interest in Betty Sadjak Memorial Park, at river crossings and at mill sites on the Au Sable and Manistee rivers.
F.	Betty Sadjak Memorial Park: Replace existing dying trees and upgrade park fencing.
G.	Eagle Park and Community Center: Pursue redevelopment of the former school property for a multipurpose athletic field, playground, picnic pavilion, sand volleyball court, splash pad/spray pool, restrooms, outdoor stage, indoor recreation facility and community center.
H.	Au Sable River Access: Upgrade river access at the CR 612 and Batterson Road bridges and establish a community park and access site on the Au Sable River on state land south of CR 612 (Old Mill site) and near Sand Lake off of Old 27 (McArthur Property).
I.	Manistee River Access: Upgrade the river access sites at M72, CR 612, Cameron Bridge Road, and Deward to enhance parking, minimize erosion, and interpret natural and historic resources.
J.	Funding Assistance: Seek grant funding for park and recreation improvements.
K.	All Recreational Improvements: Ensure all recreational improvements include features that are attractive and accessible to all people of all ages and abilities.

Action Program

The action program is presented below in two tables that describe improvements to existing facilities and the development of new facilities. Anticipated funding sources will be in the form of cash from the Township general fund, in-kind labor, and Michigan Department of Natural Resources (MDNR) grants. Sources of the grants are: Land and Water Conservation Fund (LWCF), Michigan Natural Resources Trust Fund (MNRTF), and other appropriate grant programs.

Table 10. Capital Improvements Schedule for Existing Properties/Facilities

Existing Facilities	Year	Activity/Development	Estimated Cost and Anticipated Funding Sources
Betty Sadjak Memorial Park	2020	Plant trees	Cost estimates under review MDNR, local foundations, service group grants and Township
	2020	Paint Basketball Court Lines	Cost estimates under review MDNR, local foundations, service group grants and Township
	2024	Upgrade Park Fencing	Cost estimates under review MDNR, local foundations, service group grants and Township
	TBD	Community garden at empty township lot across CR 612	Cost estimates under review MDNR, local foundations, service group grants and Township
Eagle Park and Frederic Township Community Center	2020	Sand volleyball court	Cost estimates under review MDNR, local foundations, service group grants and Township
	2021	Renovate Multipurpose athletic field, splash pad/spray pool	Cost estimates under review MDNR, local foundations, service group grants and Township
	2021	Picnic pavilion, outdoor stage	Cost estimates under review MDNR, local foundations, service group grants and Township
	2023	Restrooms – accessible from outside	Cost estimates under review MDNR, local foundations, service group grants and Township
	2024	Upgrade play structures, including adding handicapped and infant swings	Cost estimates under review MDNR, local foundations, service group grants and Township

Rationale for Township Park Improvements

The proposed recreational improvements to the Betty Sadjak Memorial Park and at the Eagle Park and Community Center, will provide more comprehensive recreational opportunities for a wide range of ages in the central portion of the Township. The playground equipment for younger children does not meet current standards, is potentially unsafe and needs to be replaced. The basketball court used by teens and adults is in need of resurfacing. By incorporating more facilities to serve a wider age range, the area will attract more family and community use of both properties, thus facilitating the need for benches and picnic related facilities. In addition, Betty Sadjak Memorial Park is the site of community wide events, including music festivals, requiring support facilities such as electrical hookups, a stage and restrooms.

Table 11. Capital Improvements Schedule for Trails and Access Sites

Facilities	Year	Activity/Development	Estimated Cost and Anticipated Funding Sources
Non-motorized trail	2023	Provide 5.9 miles non-motorized trail along Old 27 from Frederic south to ultimately connect with the Crawford County Recreation Path and Hartwick Pines State Park and other trail systems.	\$236,000 (approx 40,000/mi) MDOT, MDNR, Road Commission, local foundations/grants and Township
	2023	Provide 4.9 miles non-motorized trail along Old 27 from Frederic north to ultimately connect with Otsego State Park and other trail systems.	\$195,000 (approx 40,000/mi) MDOT, MDNR, Road Commission, local foundations/grants and Township
Au Sable River Access 1	2024	MacArthur Property – Work with DNR to provide closer access to the river, particularly for the physically challenged and to install restroom facilities, interpretive trails, a fishing dock, road improvements and expanded parking.	Cost estimates under review DNR, Natural Resources Trust Fund and Local Service groups
Au Sable River Access 2	2020/2023	Old Mill Site-Develop a community park and access site in cooperation with DNR on State land south of CR612.	Cost estimates under review DNR, Natural Resources Trust Fund and Local Service groups
Manistee River Accesses	2024	Upgrade access sites at M-72, CR612, Goose Creek Campground and Cameron Bridge Road to enhance parking, control erosion, interpretive signage for natural and historic resources, and interpretive signs for five access sites in the Deward Area.	Cost estimates under review DNR, Natural Resources Trust Fund and Local Service groups

Rationale for Trail and Access Site Improvements

There is a need and significant public interest in to provide safe pedestrian and bicycle routes throughout the Township and specially to connect to other existing and proposed trail networks in the region. A separated non-motorized pathway is the preferred option for providing a safe route for many different user groups. The first priority is from Frederic south along Old 27, then north along Old 27 and ultimately to have some east–west routes.

The Township is very interested in working cooperatively with the Michigan Department of Natural Resources for the development of a low-impact passive recreation area, including an improved and universally accessible fishing dock at the MacArthur Property, as well as improved access at CR 612 (Old Mill Site).

Property Acquisition

Frederic Township is ultimately interested in pursuing a long-term lease for the Old Mill Site (located on CR 612) from the MDNR, but does not anticipate doing so until approximately 2023, and the cost of such is unknown at this time.

Plan Review and Adoption

The Frederic Township Planning Commission held a public hearing on the Recreation Plan on January 8th, 2020. The Township Planning Commission recommended it for approval by the Township Board at a meeting on January 8th, 2020, immediately following the public hearing. The Frederic Township Board subsequently adopted the recreation plan on January 14th, 2020, a copy of the hearing minutes and resolutions of adoption are provided under separate cover.

Transmittal to the Regional Planning Agency.

The adopted plan was transmitted to the Northeast Michigan Council of Governments on January 22, 2020, a copy of transmittal letter is provided under separate cover.

Transmittal to the County Planning Agency.

The adopted plan was transmitted to the Crawford County Planning and Zoning Department on January 22, 2020, a copy of transmittal letter is provided under separate cover.

Recreation Plan Certification

A copy of the Recreation Plan Certification is provided under separate cover.



COMMUNITY PARK AND RECREATION PLAN

CERTIFICATION CHECKLIST

By Authority of Parts 19, 703 and 716 of Act 451, P.A. 1994, as amended, submission of this information is required for eligibility to apply for grants

INSTRUCTIONS: Complete, obtain certification signatures and submit this checklist with a locally adopted recreation plan.

All recreation plans are required to meet the content and local approval standards listed in this checklist and as outlined in the *Guidelines for the Development of Community Park and Recreation Plans* provided by the Michigan Department of Natural Resources (DNR). Plans must be submitted to the DNR through MiRecGrants **with** a completed checklist that has been signed by an authorized official(s) of the local unit of government(s) submitting the plan. Plans may be submitted at any time of the year, but no later than February 1 of the year the local unit of government is applying for grants.

PLAN INFORMATION

Name of Plan:

Frederic Township Recreation Plan 2020-2024

List the community names (including school districts) that are covered under the plan and have passed a resolution adopting the plan.	County	Month and year plan adopted by the community's governing body
Frederic Township	Crawford	January, 2020

PLAN CONTENT

INSTRUCTIONS: Please check each box to certify that the listed information is included in the final plan.

1. COMMUNITY DESCRIPTION

2. ADMINISTRATIVE STRUCTURE

- Roles of Commission(s) or Advisory Board(s)
- Department, Authority and/or Staff Description and Organizational Chart
- Annual and Projected Budgets for Operations, Maintenance, Capital Improvements and Recreation Programming
- Current Funding Sources
- Role of Volunteers
- Relationship(s) with School Districts, Other Public Agencies or Private Organizations

Recreation Authorities or Trailway Commissions Only:

- Description of the Relationship between the Authority or Commission and the Recreation Departments of Participating Communities
- Articles of Incorporation

3. RECREATION INVENTORY

- Description of Methods Used to Conduct the Inventory
- Inventory of all Community Owned Parks and Recreation Facilities
- Location Maps (site development plans recommended but not required)
- Accessibility Assessment
- Status Report for all Grant-Assisted Parks and Recreation Facilities
- Waterways Inventory (if applicable)

4. RESOURCE INVENTORY (OPTIONAL)

5. DESCRIPTION OF THE PLANNING PROCESS

6. DESCRIPTION OF THE PUBLIC INPUT PROCESS

Description of the Method(s) Used to Solicit Public Input Before or During Preparation of the Plan, including a Copy of the Survey or Meeting Agenda and a Summary of the Responses Received

Copy of the Notice of the Availability of the Draft Plan for Public Review and Comment

Date of the Notice November 28, 2019

Type of Notice Newspaper, Web, posted at Twp.

Plan Location Twp. Hall and online

Duration of Draft Plan Public Review Period (Must be at Least 30 Days) 40

Copy of the Notice for the Public Meeting Held after the One Month Public Review Period and Before the Plan's Adoption by the Governing Body(ies)

Date of Notice November 28, 2019

Name of Newspaper Crawford Avalanche

Date of Meeting January 8, 2020

Copy of the Minutes from the Public Meeting

7. GOALS AND OBJECTIVES

8. ACTION PROGRAM

9. POST-COMPLETION SELF-CERTIFICATION REPORT(S)

PLAN ADOPTION DOCUMENTATION

APPROVAL DOCUMENTATION: For multi-jurisdictional plans, each local unit of government must pass a resolution adopting the plan. Prepare and attach a separate page for each unit of government included in the plan.

1. Official resolution of adoption by the governing body dated: January 14, 2020

2. Official resolution of the Planning Commission or Board, recommending adoption of the plan by the governing body, dated: January 8th, 2020

3. Copy of letter transmitting adopted plan to County Planning Agency dated: January 30, 2020

4. Copy of letter transmitting adopted plan to Regional Planning Agency dated: January 30, 2020

OVERALL CERTIFICATION

NOTE: For multi-jurisdictional plans, Overall Certification must include the signature of each local unit of government. Prepare and attach a separate signature page for each unit of government included in the plan.

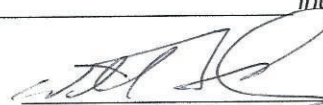
I hereby certify that the recreation plan for

FREDERIC TOWNSHIP

(Local Unit of Government)

above and as set forth by the DNR.

includes the required content, as indicated



Authorized Official for the Local Unit of Government

1/14/2020
Date

This completed checklist must be uploaded in MiRecGrants.

**FREDERIC TOWNSHIP
RESOLUTION 2020-1-14**

WHEREAS, Frederic Township has undertaken a planning process to determine the recreation and natural resource conservation needs and desires of its residents during a five year period covering the years 2019 through 2023, and

WHEREAS, Frederic Township began the process of developing a community recreation plan in accordance with the most recent guidelines developed by the Department of Natural Resources and made available to local communities, and

WHEREAS, residents of Frederic Township were provided with a well-advertised opportunity during the development of the draft plan to express opinions, ask questions, and discuss all aspects of the recreation and natural resource conservation plan, and

WHEREAS, the public was given a well-advertised opportunity and reasonable accommodations to review the final draft plan for a period of at least 30 days, and

WHEREAS, a public hearing was held on January 8th, 2020 at the Frederic Township Hall to provide an opportunity for all residents of the planning area to express opinions, ask questions, and discuss all aspects of the Frederic Township Recreation Plan, and

WHEREAS, Frederic Township has developed the plan as a guideline for improving recreation and enhancing natural resource conservation for Frederic Township, and

WHEREAS, after the public hearing, the Frederic Township Board voted to adopt said Frederic Township Recreation Plan.

NOW, THEREFORE BE IT RESOLVED the Frederic Township Board hereby adopts the Frederic Township Recreation Plan.

Yeas: Nays: Absent:

5

0

0

I, Nancy L. Bindschatel, Clerk do hereby certify that the foregoing is a true and original copy of a resolution adopted by the Frederic Township Board at a Regular/Special Meeting thereof held on the 14th day of January, 2020.

Nancy L. Bindschatel

Legal Action

Notice of Default

Default has been made in the conditions of a mortgage made by Harvey Smale, a single man, to Mortgage Electronic Registration Systems, Inc., as nominee for lender and lender's successors and/or assigns, Mortgagee, dated June 2, 2006 and recorded June 7, 2006 in Liber 681, Page 859 Crawford County Records, Michigan. Said mortgage is now held by U.S. BANK NATIONAL ASSOCIATION, as Trustee for Structured Asset Securities Corporation Mortgage Pass-Through Certificates, Series 2007-GEL1, by assignment. There is claimed to be due at the date hereof the sum of Seventy-Four Thousand Nine Hundred Sixty-Three and 44/100 Dollars (\$74,963.44), including interest at 4% per annum. Under the power of sale contained in said mortgage and the statute in such case made and provided, notice is hereby given that said mortgage will be foreclosed by a sale of the mortgaged premises, or some part of them, at public vendue at the place of holding the circuit court within Crawford County, Michigan at 10:00 AM on DECEMBER 11, 2019. Said premises are located in the Township of Beaver Creek, Crawford County Michigan, and are described as:

A parcel of land lying in the W 1/2 of the NW 1/4 of Section 11, T25N, R3W. Commencing at the NW corner; thence E along Section line 388 feet; thence South 220 feet; thence West 262 feet; thence S01°11'40" West 151.8 feet; thence North 69°19'35" West 135.25 feet; thence North 01°15'50" East on Section line 297.2 feet to P.O.B. The redemption period shall be 6 months from the date of such sale, unless determined abandoned in accordance with MCLA §600.3241a, in which case the redemption period shall be 30 days from the date of such sale. If the property is sold at foreclosure sale, pursuant to MCL 600.3278, the borrower will be held responsible to the person who buys the property at the mortgage foreclosure sale or to the mortgage holder for damage to the property during the redemption period. Dated: November 7, 2019
File No. 19-010066
Firm Name: Orleans PC
(11-07)(11-28)

Notice of Default

Default has been made in the conditions of a mortgage made by Gordon L. Cox, a single man, to Mortgage Electronic Registration Sys-

tems, Inc., as nominee for lender and lender's successors and/or assigns, Mortgagee, dated June 30, 2005 and recorded July 15, 2005 in Liber 676, Page 307 Crawford County Records, Michigan. Said mortgage is now held by The Bank of New York Mellon as Trustee for CWABS, Inc. Asset-Backed Certificates, Series 2005-11, by assignment. There is claimed to be due at the date hereof the sum of One Hundred One Thousand Nine Hundred Twenty-Six and 30/100 Dollars (\$101,926.30), including interest at 7.65% per annum. Under the power of sale contained in said mortgage and the statute in such case made and provided, notice is hereby given that said mortgage will be foreclosed by a sale of the mortgaged premises, or some part of them, at public vendue at the place of holding the circuit court within Crawford County, Michigan at 10:00 AM on JANUARY 8, 2020. Said premises are located in the Township of Frederic, Crawford County Michigan, and are described as: The south 1/2 of the north 1/2 of the west 1/2 of the west 1/2 of the northeast 1/4 of the northeast 1/4 of Section 11, Town 27 North, Range 4 west. Being the same property conveyed to Gordon L. Cox, Sr. and Joyce A.

Cox by deed dated 3-3-93 and recorded 4-26-93 in Liber 358, page 87 in the Office of the Recorder of Crawford County, Michigan. The redemption period shall be 6 months from the date of such sale, unless determined abandoned in accordance with MCLA §600.3241a, in which case the redemption period shall be 30 days from the date of such sale. If the property is sold at foreclosure sale, pursuant to MCL 600.3278, the borrower will be held responsible to the person who buys the property at the mortgage foreclosure sale or to the mortgage holder for damage to the property during the redemption period. Dated: November 21, 2019
File No. 19-008316
Firm Name: Orleans PC
(11-21)(12-12)

—

**STATE OF MICHIGAN
PROBATE COURT
COUNTY OF
CRAWFORD
PUBLICATION OF
NOTICE OF HEARING**

FILE NO.:
19-9186-GM

In the matter of:
Xander Kage McAlpine

TO ALL INTERESTED PERSONS including: whose address(es)

is/are unknown and whose interest in the matter may be barred or affected by the following:
TAKE NOTICE:
A hearing will be held on December 11, 2019 at 3:30 pm at 200 W. Michigan Ave., Grayling, MI 49738, before Judge Burmeister P48732, for the following purpose: 6 month review of minor.
Date: 11-19-19

Jason Thompson, GAL P66027
PO Box 463
Grayling, MI 49738
989-745-6625

Nora DeVault
200 W. Michigan Ave.
Grayling, MI 49738
989-344-3237

PUBLIC HEARING NOTICE

This notice is to advise you and all interested persons that the Planning Commission has scheduled a Public Hearing to receive public comment regarding a special land use at 106 E Michigan Ave, property ID: 20-070-100-017-005-00

Proposed use: Restaurant serving alcohol

The Public Hearing is scheduled for 6:00 PM on Tuesday, December 17, 2019 in the Council Chambers at Grayling City Hall, 1020 City Boulevard. All interested parties may attend said Public Hearing and/or submit written comments to the Grayling City Planning Commission, c/o City Clerk, 1020 City Boulevard, P.O. Box 549, Grayling, MI 49738. Inquiries may be directed to Jon Williamson, Planning Chairman by calling 989-348-2131 or by email to: clerk@cityofgrayling.org.

Individuals with disabilities requiring auxiliary aids or services at the meeting should contact The Grayling City Office at 989-348-2131 seven days prior to the meeting.

Notice of Availability of Frederic Township Draft Recreation Plan and Public Hearing for Input on the Draft Recreation Plan

Frederic Township Planning Commission has voted to release their draft recreation plan and make it available for public review for a 30-day period of time. After the 30-day public review period, there will be a public hearing on January 8, 2020 at 10:00 AM at the Frederic Township Hall. Public comments are requested either in person or by representative at the public hearing, or submitted to Steve Schnell at sschnell@nemcog.org, or at the Frederic Township Hall, 6470 Manistee Road, Frederic, MI 49733. The draft plan is available at <https://www.frederictownship.org/>. All necessary reasonable auxiliary aids and services will be provided to individuals at the meeting upon 10 days' notice to the township staff at PO Box 78, Frederic, MI 49733.

**CITY OF GRAYLING
NOTICE OF CLOSEOUT PUBLIC HEARING FOR MICHIGAN COMMUNITY DEVELOPMENT BLOCK GRANT (CDBG) FUNDING FOR AUSABLE RIVER CANOE PUBLIC LAUNCH AND SANITARY SEWER FORCE MAIN**

The City of Grayling will conduct a closeout public hearing on December 16, 2019 at 6:30 pm at City Hall, 1020 City Boulevard, Grayling MI 49738 for the purpose of affording citizens an opportunity to submit comments and receive a final report on the completion of the AuSable River Canoe Launch CDBG grant.

The CDBG grant provided funding to assist in the construction of an ADA accessible public canoe launch on the AuSable River located at 103 S. James St., Grayling MI 49738.

The City of Grayling will conduct a closeout public hearing on December 16, 2019 at 6:30 pm at City Hall, 1020 City Boulevard, Grayling, MI 49738 for the purpose of affording citizens an opportunity to submit comments and receive a final report on the completion of the Sanitary Sewer Force Main CDBG grant.

The CDBG grant provided funding to assist in the replacement of the primary sanitary sewer force main from the Maple Street Lift State to the Waste Water Treatment Facility.

Interested parties are invited to comment on the project in person at the public hearing or in writing through December 13, 2019 and addressed to Debra Mead, Project Coordinator PO Box 549, Grayling, MI 49738 or dmead@cityofgrayling.org.

Citizen views and comments on the CDBG projects are welcome.

City of Grayling
Debra Mead, Project Coordinator
(989) 348-2131

Individuals with disabilities requiring auxiliary aids or services at the meeting should contact the Grayling City office at 989-348-2131 seven days prior to the meeting.

The City of Grayling is an Equal Opportunity Employer and Provider.

**South Branch Township
Zoning Board of Appeals
Notice of Public Hearing
SBT Zoning Ordinance Interpretation Request**

Applicant Name: Gross, Kurt & Elizabeth
Property Address: 475 S. McMaster's Bridge Rd., Grayling, Crawford County, MI
Parcel ID/Location: #063-002-013-020-01; T26N-R1W-Sec 02
Proposed Action: The applicant is requesting an Ordinance Interpretation regarding setback standards for an accessory structure specific to the Stream Corridor Overlay zoning district.

A public hearing regarding the interpretation request will be held on:
Date: December 9th, 2019
Time: 7:00 P.M.
Location: South Branch Township Hall, 5245 N. M-18, Roscommon

Comments on the application may be voiced at the hearing. Written comments received by 12:00 noon, December 5th, 2019 will also be made part of the hearing record.
Send written comments to:
Bonnie Shunatona, SBT Zoning Administrator
P.O. Box 606, Roscommon, MI 48653
Email – zoningadmin@southbranchtownship.com

**PUBLIC
NOTICE**

Deadline for submission of Legal, Public & Bid Notices is 5 p.m. the Friday prior to publication.

Please submit all notices via email to legals@crawfordcountyavalanche.com

FREDERIC TOWNSHIP BOARD
REGULAR MEETING
JANUARY 14, 2020

Meeting called to order at 10:00 A.M by Supervisor, Johnson. Roll call showed members present, Johnson, Bindschatel, Dawson, Friedman and Goscicki. There were five (5) citizens present.

Pledge of Allegiance was said.

Bindschatel made motion, supported by Dawson to approve the Agenda, motion carried.

Goscicki made motion, supported by Friedman to approve the minutes of the December 10, 2019, Regular meeting, motion carried.

Guest Speakers: None

Department Report:

Clerk: None

Supervisor: Request to delay payment for Marijuana permit from John Harvey in the amount of \$25,000.00 for two (2) weeks. Request was approved.

Todd, the recycle personnel, slipped on the ice and broke his leg. Vanessa, the cleaning personnel, will take over for the time needed.

Treasurer: Bindschatel made motion, supported by Friedman to receive the report as presented, motion carried. Dawson made motion, supported by Friedman to approve payment of vouchers #44229 thru #44318 in the amount of \$493,968.29, motion carried.

Power Commissioner: None

County Commissioner: No report

Zoning/Building: \$5,000.00 was collected for a Recreational Marijuana Grow permit.

Zoning Officer: In court, no report submitted.

Planning Commission: Recreational plan has been voted on and now the Township Board has been asked to approve.

Fire Department: There were one hundred fifty- four (154) runs in December, 2019.

Waiting on insurance to pay for the basement flood. Kitchen renovations are almost completed.

Parks and Recreation: Friedman made motion, supported by Goscicki to adopt Resolution 2020-1-14, Five Year Recreation Plan, roll call showed, all ayes, motion carried. Minutes for the Public Hearing were presented. Next meeting will be held on March 16, 2020 at 10:00 A.M.

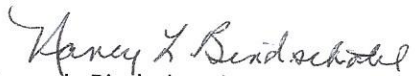
Unfinished Business: None

New Business: Board of Review training will be on February 4, 2020. Board of Review will meet on March 2nd, 9th and 10th, 2020.

Correspondence: None

Public Comments: Deer (cow) catchers will be installed on the ambulances. A citizen was concerned about the marijuana shops in the township.

Bindschatel made motion, supported by Dawson to adjourn. Meeting adjourned at 10:35 A.M.



Nancy L. Bindschatel
Frederic Township Clerk

**Frederic Township Planning Commission
Meeting – 08 January 2020**

Members Present: Ron Chappel, Deb Friedman, Karen Harrison, Francis Hummel and Dan McCoy

Members Absent: Lori Johnson and Michele Stanley

Also present: Shelley Pinkelman (Zoning Administrator), Brandon Gabriel (Zoning Enforcement), Steve Schnell (NEMCOG representative via video conference) and David and Linda Kincaid.

The meeting was called to order at 10:00 am. Roll-call attendance was taken followed by the Pledge of Allegiance.

Approval of the Agenda: A motion was made by Friedman and supported by Chappel to approve the agenda. The motion carried.

Approval of 18 November 2019 Planning Commission Meeting Minutes: A motion was made by Chappel and supported by McCoy to approve the minutes. The motion carried.

Recess Regular Meeting to hear public comments: A motion was made by Harrison and seconded by Friedman to recess the Planning Commission Regular Meeting and enter into the Public Hearing in regard to the Frederic Township Recreational Plan 2020-2024. The motion carried.

Roll call for Public Comments: Members Present: Ron Chappel, Deb Friedman, Karen Harrison, Francis Hummel and Dan McCoy.

Public Comments: It was brought up that the average age of the residents in Frederic Township is 47.3 years old. There does not seem to be activities for elderly individuals in the recreation plan. It was discussed that the community center and the Betty Sadjak park are both used for pickleball. This will be added to the plan. There will also be added that language will be added to capture the when possible facilities will be designed for access by elderly and handicapped.

There was also a discussion about trails leading into town and the downtown Frederic street scape. The street scape will be mentioned in the Recreational Plan. Other changes in the Recreational Plan were discussed:

1. Figure 1 – Modify to include the Maghielse Tract, which was purchased by the MIDNR in the spring of 2019, as government recreational land.
2. Table 4 – Modify to include the Maghielse Tract in the “Forest Public, managed” row and ensure that it is not included in the “Private, largely unmanaged” row. Clarify in the “Mineral Gas Oil” row if there are 36 or 37 wells. Remove the row “Gravel – see Figure 3” for the gravel pit is now privately owned.
3. Page 9 – Status Report – Modify first paragraph. Frederic Township has puFrederic Township Community Center/Eagle Park is referred to consistently (rather than use adjacent park).
4. Table 8 – Remove the row that refers to Happi Days for they are no longer in business.
5. Figure 3 – Remove Happi Days and add a key for the numbered sites.
6. Goals and Objectives – Add language in the goals to reflect that consideration will be given to ensure all ages and abilities are accommodated.

**Frederic Township Planning Commission
Meeting – 08 January 2020**

A motion was made by McCoy and seconded by Chappel to return to the regular Planning Commission Meeting. The motion carried.

The regular Frederic Township Planning Commission meeting was resumed.

Old Business: None

New Business:

1. **Approval of the Frederic Township Recreational Plan 2020-2024:** A motion was made by McCoy and seconded by Chappel to approve the recreational plan with suggested modifications. A roll call vote was taken:
Chappel: aye McCoy: aye Hummel: aye Harrison: aye Friedman: aye
2. A motion was made by McCoy and seconded by Chappel to send the Frederic Township Recreational Plan 2020-2024 to the Township Board for approval. The motion carried.
3. Election the Planning Commission Chair and Secretary for 2020: A motion was made by Friedman and seconded by Chappel to elect F. Hummel as Chair and K. Harrison as Secretary of the Planning Commission for 2020. The motion carried.
4. The next Planning Commission meeting date was set for March 16th at 10 am.

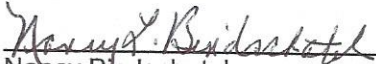
Adjourn: A motion was made by Harrison and supported by McCoy to adjourn the meeting. The motion carried.

Minutes respectfully submitted by Karen Harrison, Secretary

Next Meeting: 16 March 2020 at 10am



Karen Harrison
Planning Commission Secretary



Nancy Bindschatel
Frederic Township Clerk



PUBLIC OUTDOOR RECREATION GRANT
POST-COMPLETION SELF-CERTIFICATION REPORT

This information required under authority of Part 19, PA 451 of 1994, as amended;
the Land and Water Conservation Fund Act of 1965, 78 Stat. 897 (1964); and Part 715, of PA 451 of 1994, as amended.

GRANT TYPE: [] MICHIGAN NATURAL RESOURCES TRUST FUND [] CLEAN MICHIGAN INITIATIVE
(Please select one) [] LAND AND WATER CONSERVATION FUND [X] RECREATION PASSPORT [] BOND FUND

GRANTEE: Frederic Township

PROJECT NUMBER: RP14-0076

PROJECT TYPE: Development

PROJECT TITLE: Betty Sajdak Memorial Park Improvements

PROJECT SCOPE: Develop basketball court, playground, toilet, picnic, landscaping.

TO BE COMPLETED BY LOCAL GOVERNMENT AGENCY (GRANTEE)

Table with 3 columns: Name of Agency (Grantee), Contact Person, Title, Address, Telephone, City, State, ZIP, Email. Row 1: Frederic Township, William Johnson, Supervisor, 6470 Manistee Street, 989-348-8778, Frederic, MI 49733, supervisor@frederictownship.org

SITE DEVELOPMENT

Any change(s) in the facility type, site layout, or recreation activities provided? If yes, please describe change(s). [] Yes [X] No

Has any portion of the project site been converted to a use other than outdoor recreation? If yes, please describe what portion and describe use. (This would include cell towers and any non-recreation buildings.) [] Yes [X] No

Are any of the facilities obsolete? If yes, please explain. [] Yes [X] No

SITE QUALITY

Is there a park entry sign which identifies the property or facility as a public recreation area? If yes, please provide a photograph of the sign. If no, please explain. [X] Yes [] No

Are the facilities and the site being properly maintained? If no, please explain. [X] Yes [] No

Is vandalism a problem at this site? If yes, explain the measures being taken to prevent or minimize vandalism. [] Yes [X] No

POST COMPLETION SELF-CERTIFICATION REPORT - CONT'D

Is maintenance scheduled on a regular basis? If yes, give schedule. If no, please explain. Yes No
Yes, Township staff routinely maintains the park with inspections at least weekly during the season.

GENERAL

Is a Program Recognition plaque permanently displayed at the site? If yes, please provide a photograph. (Not required for Bond Fund Grants) Yes No N/A

Is any segment of the general public restricted from using the site or facilities? (i.e. resident only, league only, boaters only, etc.) If yes, please explain. Yes No

Is a fee charged for use of the site or facilities? If yes, please provide fee structure. Yes No

What are the hours and seasons for availability of the site?

Dawn to dusk, seasonally.

COMMENTS (ATTACH SEPARATE SHEET IF MORE SPACE IS NEEDED)

POST COMPLETION SELF-CERTIFICATION REPORT - CONT'D

CERTIFICATION

I do hereby certify that I am duly elected, appointed and/or authorized by the Grantee named above and that the information and answers provided herein are true and accurate to the best of my personal knowledge, information and belief.

William Johnson


Please print


Grantee Authorized Signature

3/11/2020
Date

Nancy L Bindshotel

Please print


Witness Signature

3/11/2020
Date

Send completed report to: POST COMPLETION GRANT INSPECTION REPORTS
GRANTS MANAGEMENT
MICHIGAN DEPARTMENT OF NATURAL RESOURCES
PO BOX 30425
LANSING MI 48909-7925

**RECREATION
PASSPORT**

This recreation site was funded, in part,
by citizens who purchased
Michigan's Recreation Passport
when renewing their license plates.
These funds are used to maintain state
and local parks, trails, boat launches,
campgrounds, historic sites and other
recreational opportunities.

*Betty Sajdak
Memorial Park*

*Dedicated
July 13, 1999*





Betty Sajdak
Memorial Park
Dedicated
July 13, 1999
1-800-368-2222

RECREATION
PASSPORT

This recreation site was funded, in part,
by citizens who purchased
Michigan's Recreation Passport
when renewing their license plates.
These funds are used to maintain state
and local parks, trails, boat launches,
campgrounds, historic sites and other
recreational opportunities.

County
E!
OR
SE IN
REAS



Play 
Tobacco Free in Crawford County

PLEASE!
NO SMOKING OR TOBACCO USE IN CHILD PLAY AREAS

Tobacco products include cigarettes, cigars, pipes, electronic smoking devices (e-cigarettes, vaping, etc.) & smokeless tobacco (chew).

Play Tobacco Free is supported by:





SPEED
LIMIT
35

STOP

WILSON



Northeast Michigan Council of Governments

80 Livingston Blvd Suite U-108 | PO Box 457 | Gaylord, MI 49734 | Voice: 989.705.3730 | Fax: 989.705.3729 | nemcog.org

January 22, 2020

Cris Jones, Chair
Crawford County Planning Commission
c/o Paul Olmstead
200 W. Michigan Ave
Grayling, MI 49738

Dear Mr. Jones:

On behalf of Frederic Township, we are pleased to inform you that the Township has approved and adopted a 5-year Recreation Plan. This plan received public input from online surveys and a public hearing.

The FINAL Adopted Recreation Plan is available online at:
<http://www.discovernortheastmichigan.org/docview.asp?did=653>

Please let us know if you have any questions about the Recreation Plan.

Sincerely,

Steve Schnell
Community Development Senior Planner
Northeast Michigan Council of Governments (NEMCOG)



Northeast Michigan Council of Governments

80 Livingston Blvd Suite U-108 | PO Box 457 | Gaylord, MI 49734 | Voice: 989.705.3730 | Fax: 989.705.3729 | nemcog.org

January 22, 2020

Diane Rekowski
Northeast Michigan Regional Council of Governments
Via Email

Dear Diane:

On behalf of Frederic Township, we are pleased to inform you that the Township has approved and adopted a 5-year Recreation Plan. This plan received public input from online surveys and a public hearing.

The FINAL Adopted Recreation Plan is available online at:
<http://www.discovernortheastmichigan.org/docview.asp?did=653>

Please let us know if you have any questions about the Recreation Plan.

Sincerely,

Steve Schnell
Community Development Senior Planner
Northeast Michigan Council of Governments (NEMCOG)