

Crawford County Parks & Recreation Plan 2022-2026 Crawford County, Michigan

Crawford County, Michigan
200 W Michigan Ave,
Grayling, Mi, 49738
Phone: (989)-348-2841
Website: <https://www.crawfordco.org/>

Adopted: January 27, 2022

Contents

Introduction	3
Location and Geographic Context.....	3
Population and Housing	4
Natural Resources	5
Administrative Structure and Funding	5
Relationships with Other Agencies & Community Organizations.....	8
Status Report of all Grant-Assisted Parks and Recreation Facilities	8
Recreation Inventory.....	9
Privately Owned Recreational Public Facilities	19
Regional Recreational Opportunities.....	19
Description of the Planning and Public Input Process	20
Planning Process	20
Schedule Timeline	20
Public Input	20
Goals and Objectives.....	21
Action Program	24
Crawford County Basis for Action	29
Hatchery.....	30
Sports Complex	31
Wakeley Landing	31
Motorized and Non-Motorized Trails	31
Appendix A - Publication Information & Comments.....	32
Appendix B – Resolutions, Minutes, & Transmittal Letters	35
Appendix C – MDNR Post Completion	39
Appendix D – Recreation Plan Certification Checklists	Error! Bookmark not defined.

Introduction

Crawford County has a vast number of natural resource opportunities, supporting a distinct set of features and facilities that attract visitors to the area. County facilities along with other publicly-owned Township, State Forest Lands, campgrounds and privately owned recreational facilities offer a wide range of recreational opportunities. This Recreation Plan is intended to enable the County to work toward implementing the documented recommendations and continue to apply for available funding assistance. Crawford County works closely and cooperatively with several public and private agencies and volunteer groups that provide recreation opportunities for the citizens of the County, the jurisdiction of this Parks and Recreation Plan includes only County-owned and operated recreation facilities and programs.

Crawford County, with the assistance of MC Planning & Design, prepared a recreation plan in 2014. The recreation plan was a component of the County 2014 Master Plan. Crawford County has decided to update of their 2014 recreation plan and is creating a stand-alone County Recreation Plan with the assistance of the Northeast Michigan Council of Governments. This Plan intends to continue providing recreation services to its residents and visitors but also plans to make improvements at the existing facilities, including compliance with Americans with Disabilities Act (ADA) and Universal Design standards, to improve accessibility for all. As a recreation service provider, the County recognizes the importance of planning for future recreation services and facilities. A major factor in the provision of any service is obtaining funding for projects. . Recreation Plans that have been approved by the Department of Natural Resources allow the County to be eligible for State of Michigan recreational grant funding.

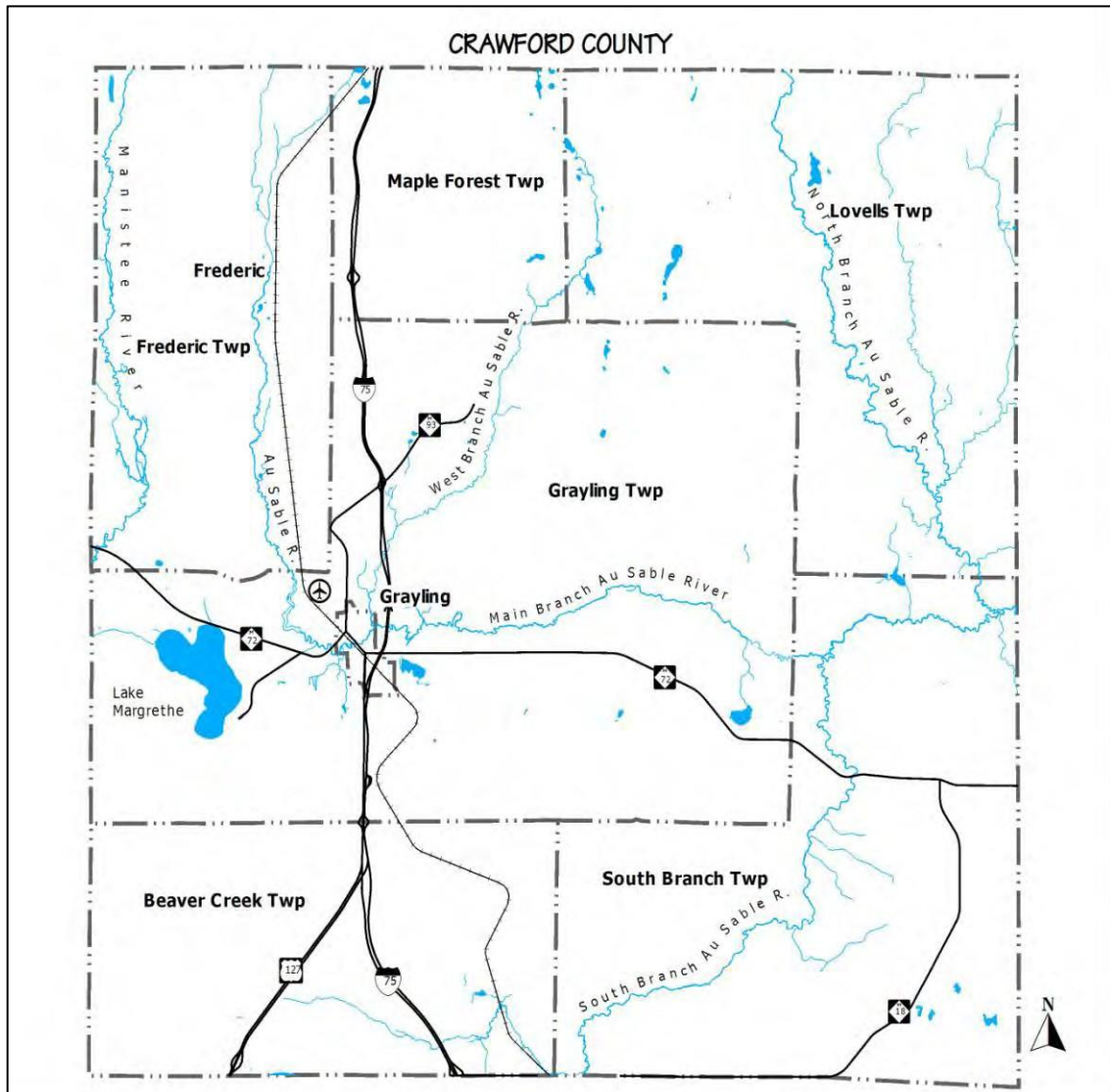
Community Description

Location and Geographic Context

Crawford County is approximately a 60 mile drive to Lake Michigan and Lake Huron. The County is centrally located within the State of Michigan with I-75 intersecting the County northerly and southerly and M-72 intersecting easterly and westerly. It is bordered on the east by Oscoda County, on the South by Roscommon County, on the west by Kalkaska County, and on the north by Otsego County. Crawford County has a land area of approximately 558 square miles.

Crawford County is located in north central Lower Peninsula of Michigan (See **Map 1.1**) The County is composed of six townships: Grayling Township, Frederic Township, Maple Forest Township, Lovells Township, South Branch Township and Beaver Creek Township. Also located in Crawford County is the City of Grayling, which serves as the county seat.

Map 1.1: Regional Setting



Population and Housing

The 2020 Census showed that Crawford County had a population of 12,988, which equated to a 7.7% decline in population from the 2010 US Census. According to 2019 American Community Survey (ACS), the median age of the County was 50.8 years. By comparison, the median age in Michigan was 29.7 years and for the United States the median age was 38.1 years according to 2019 ACS. The higher median age means there is a higher percentage of the population 50 years and older than in Michigan and the United States. The County should consider an aging population when planning for recreation facilities. The ACS 2019 shows there were 6,141 housing units within the County of which 18.8 percent are renter-occupied units or 1,155 units.

Natural Resources

The woodlands, open spaces, wildlife, water, and rolling hills are several key resource values that draw people to both recreate and live in the County. Abundant public lands offer access to thousands of acres of recreational lands for hunting, hiking, wildlife viewing and snowmobiling. Lakes, creeks and streams, especially the Au Sable River, provide opportunities for fishing, boating and water sports.

A rural landscape, abounding with views of forestlands and wetlands, typifies the community character of Crawford County. Forestlands are important to the local economy; recreational use and production of forest goods bring dollars into the Community. Many long-time visitors decide to move to the area upon retirement.

Typical of northern Michigan, the distinct four seasons offer an ever-changing landscape. Long snowy, cold winters and moderately warm summers are separated by a cool, green spring and a cool, colorful fall. The County is approximately 35 miles inland from Lake Michigan and 55 miles inland from Lake Huron. Given this geographic location, the area is influenced by lake effect snowfall from Lake Michigan.

The common forest types are pine (mostly jack pine) and mixed oak forests. The combination of sandy, droughty soils and fire prone species like jack pine, the area has been subject to wildfires for thousands of years. The Kirtland's Warbler requires young thick jack pine forests for nesting and raising their young. Uncontrolled wildfires once created needed habitat. Today, the US Forest Service and the Michigan Department of Natural Resources manage the jack pine forest to create young forests for the warbler while also working to suppress wildfires. Lowland conifer and lowland hardwood forests can be found adjacent to streams and associated with Lake Margrethe.

The Au Sable River watershed drains approximately 1,932 square miles within portions eight counties. The main branch enters the County in the northwest corner and flows out of the southeast corner. An eight mile stretch of the Main Branch of the Au Sable, east of Grayling, from Burton's Landing downstream to Wakeley Bridge, is designated flies-only, no-kill water. This segment is known as "the Holy Water." The East Branch, North Branch and South Branch all flow into Crawford County and empty into the main stream as it traverses the County. The Au Sable is rated as a "Blue-Ribbon" trout stream and is designated as a Michigan Natural River. Since 1947, the Au Sable River Canoe Marathon, a yearly 120 mile (190 km) pro-am canoe race, runs the river from the City of Grayling to Oscoda.

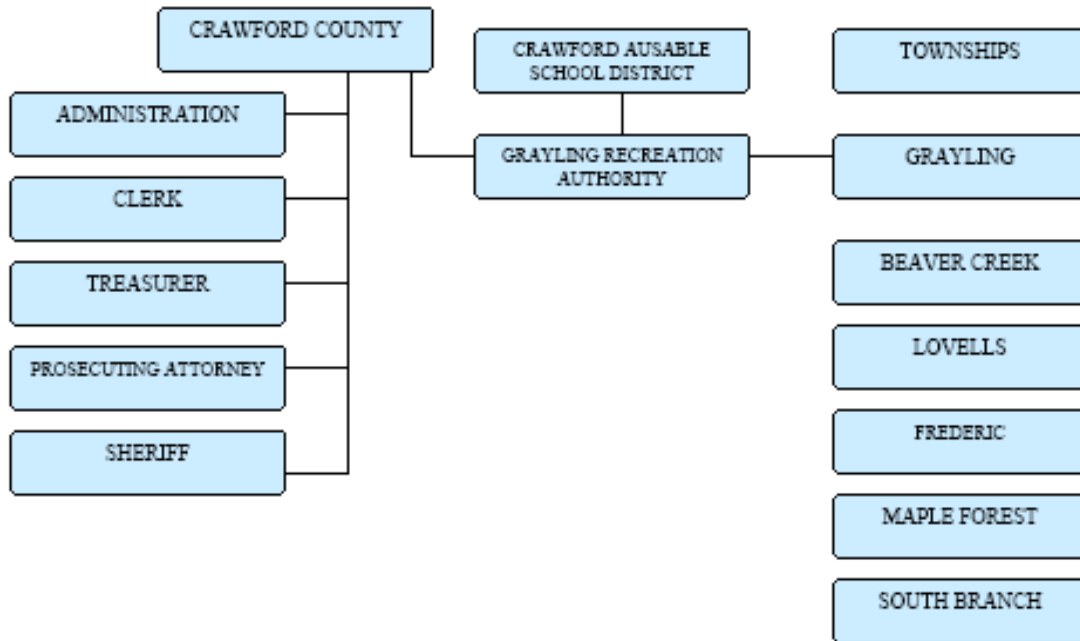
Administrative Structure and Funding

The Crawford County Board of Commissioners operates under an administrative structure consisting of a Chair, Vice-Chair and board members. These positions are chosen by qualified voters of the county in at-large elections by districts held every other November. Bylaws adopted by the County determine the order of business and method of conducting regular county business. For most issues that require a vote for determination, a majority of commissioners present is required.

The county does have a recreational authority – the Grayling Recreational Authority (GRA). The GRA was created by local units of Crawford County government to facilitate parks and recreation services in Crawford County, to operate the Hanson Hill Recreation Area and Winter Sports Park.

Figure 1.1 Crawford County Organization Chart

Organization Structure



Crawford County Parks & Recreation Staff

The County does not employ any staff. Duties related to recreation properties are assigned to existing staff.

Table 1.1 Crawford County Budget and Recreation Expenditures, 2019-2022

Crawford County Budget and Recreation Expenditures, 2019-2022			
Budget			
FY Ending Sept 30	2019-2020	2020-2021	2021-2022
Recreation	\$4,257	\$4,800	\$21,300
Total County	\$5,800,776	\$56,193,225	\$5,877,241
Expenditures			
Recreation	\$4,257	\$4,800	\$21,300
Source: Crawford County 2019-2022			

Grayling Recreation Authority

The Grayling Recreational Authority (GRA) was created by the local units of government in Crawford County to address the recreational needs of the County. This body’s primary function is to facilitate parks and recreation services in Crawford County and to operate Hanson Hills Recreation Area and Winter Sports Park. Hanson Hills has the unique distinction of being a State legislated recreational facility, created under P.A. 156 of 1917. The property is located in Grayling Township and is owned by the State of Michigan Department of Military Affairs. The lease to the Hanson Hills Recreation Area is renewed periodically with joint signatures from GRA and the Michigan National Guard. The property is leased to the Grayling Recreational Authority based on a renewable twenty (20) year lease. The current lease expires in 2026. The GRA is governed by a board of Directors made up of appointed representatives from the County, Grayling Township and the Crawford Au Sable School Board and appointed at-large members. The three at-large members are selected and approved by a majority vote of the six appointed members.

GRA Parks & Recreation Staff

The GRA has full-time staff for administration, operation, service and maintenance of the Hanson Hill Recreation Area.

Funding for the GRA Budget

The GRA is currently funded by a county wide-millage. Apart from millage funds, other possible funding sources for recreational improvements in the county exist in grant opportunities with agencies such as the Michigan Department of Natural Resources, private foundations, community service organizations and community fund-raising groups.

Table 1.2 Grayling Recreational Authority Budget and Expenditures, 2011-2014

Grayling Recreation Authority Budget and Recreation Expenditures, 2019-2022			
Budget			
FY Ending Sept 30	2019-2020	2020-2021	2021-2022
Recreation	\$476,942.58	\$560,273.19	\$737,700.14
Total GRA	\$518,249.34	\$698,292.77	\$795,130.00
Expenditures			
Recreation	\$476,942.58	\$560,273.19	\$737,700.14
Source: Grayling Recreation Authority 2019-2022			

Relationships with Other Agencies & Community Organizations

Numerous groups within the county are involved with the improvement and operation of the recreational facilities in Crawford County. The majority of these organizations are operated on a volunteer basis. The organizations and special interest groups that assisted to provide recreation opportunity in Crawford County are:

1. Crawford County Trails Sub Committee
2. Crawford Au Sable Soccer Association
3. Redskins Football
4. Little League Baseball
5. Crawford Au Sable Athletic Director
6. Grayling Parks and Recreation Committee
7. Crawford County Commission on Aging (Grayling Senior Center)
8. Grayling City Parks & Recreation
9. MSUE 4-H
10. Youth Scouting (Boy Scouts/Girl Scouts)
11. Hanson Hills Recreation Authority
12. Au Sable River Canoe Marathon
13. Fish Hatchery
14. Anglers of the Au Sable

Status Report of all Grant-Assisted Parks and Recreation Facilities

The following is a summary of the grant assistance which has been received by Crawford County. Post-completion certification reports for each of these projects are provided under separate cover.

Table 1.3 – Crawford County Recreation Grant Status			
Grant #	Park Name	Scope Item	Current Condition
26-00776	Wakely Bridge Access	Fencing, Picnic Equipment, Lake & Water Conservation Fund Signage	Facility is in good condition. The access continues to provide fisherman and recreation enthusiast access to the Au Sable

BF91-295	Hanson Hills	Baseball Diamonds, Snow making Machines, Restroom Renovation, Soccer Fields	Facility is in good condition and widely used. Hanson Hills has fulltime staff members and continues to add amenities.
TF00-146	Grayling Hatchery	ADA Accessible Trails, Children’s Fishing Pond, Fencing, Parking Lot, Stormwater Retention Basin, River Restoration, Raceway Infrastructure, Interpretive Signage, Fencing, Demolition of obsolete buildings.	Facility is in good condition and widely used. The County continues to be involved with multiple agencies to continue to improve the Hatchery and surrounding area.
26-01713	County Sports Complex	Little League Fields, Access Paths, Additional Site Work & Engineering	Facility is in good condition. The County continues to add amenities.

Recreation Inventory

An inventory of existing recreation facilities located in Crawford County is provided below. Sites are grouped according to jurisdictional ownership. County owned facilities are listed first, then other public sites, privately owned campgrounds, recreation trails, boat/fishing access sites and canoe liveries. Each listing is followed by a brief description of that location. Maps 1.2, 1.3, 1.4 illustrates the locations of the public recreation sites and trails.

Accessibility

Creating a park system that is safe, accessible, and usable to all individuals, including those with disabilities is essential. A grading system has been developed by the Michigan Department of Natural Resources (DNR) to easily identify those parks and facilities which are most and least handicap accessible and usable, based on ADA guidelines. The accessibility grading system uses a five point system ranging from one (none of the facilities/park areas meeting accessibility guidelines) to five (the entire park was developed/renovated using the principals of universal design).

An American with Disabilities Act (ADA) compliance assessment of Crawford County parks was conducted during the fall of 2020. The assessment consisted of a visual inspection of each park in regard to access and circulation of the park facilities. As noted in Table 1.4 below, some of the parks do not meet all criteria for handicap accessibility. Crawford County is dedicated to continuing its efforts towards improving accessibility at each of its parks when improvements are made. This includes accessible parking, path, restrooms, activity areas, amenities, and signage.

MDNR Accessibility Grading System for Parks and Recreational Facilities

- 1.- None of the facilities/park areas meet accessibility guidelines.
- 2.- Some of the facilities/park areas meet accessibility guidelines.
- 3.- Most of the facilities/park areas meet accessibility guidelines.
- 4.- The entire park meets accessibility guidelines.
- 5.- The entire park was developed/renovated using the principles of universal design

Table 1.4 Public Recreational Properties – Crawford County

CRAWFORD COUNTY & GRA RECREATIONAL FACILITIES				
Name	Classification	Description	Accessibility	Size
Hanson Hills Recreation Area	Large Urban Park Natural Resource Area Sports Complex	Large Park/Open Area that is located on State Land. Area is close to town, with bordering neighborhoods. Consists of Ski Lodge, Downhill Ski run, Nordic Ski trails, and Tubing Hill. Mt. Bike and Hiking Trail System. Includes Playground Area, Softball and Soccer Fields, Archery Facility, Disc Golf Course, Fishing Pond and Picnic Area.	2	277 Acres (Leased) 1500 Acres approx. (Special Use Permit)
Grayling Fish Hatchery	Special Use	Fish Hatchery Located in town, Bordering numerous residential areas. Includes Trout fishing tanks, Museum building, Picnic Area.	3	50 Acres
Crawford County Sportsplex (fairgrounds)	Sports Complex	Concession stand and ball fields	2	30 acres
Wakeley Bridge Canoe Launch	Mini-Park	Canoe access	1	½ acre
Township Park		Park leased to Grayling Township on 99 year lease		

Table 1.5 State Parks, State and Federal Forests, State and Federal Campgrounds in Crawford County

STATE & FEDERAL RECREATIONAL FACILITIES		
Facility	Amenities	Location
North Higgins Lake State Park	174 campsites, trailer station, cabins, boat access, fishing, trails, museum, pavilions, conference center	Section 36, southern edge of Beaver Creek Township
Goose Creek State Forest Campground and Trail Camp	9 campsites, canoeing, hiking, horseback riding, wildlife viewing, fishing large equestrian group camp area	5.5 miles west of Frederic, Frederic Township
Manistee River Bridge Campground	23 campsites, canoeing, fishing, canoe access	Section 31, Frederic Township
Upper Manistee River Campground	30 campsites, 10 walk-in sites, canoeing, fishing, group camp for canoeists	Section 7, Frederic Township
Au Sable River Canoe Camp	13 campsites (5 are canoe access only) hiking, picnicking, fishing, wildlife viewing	Grayling Township, 5.5 miles east of Grayling
Burton's Landing Canoe Launch	12 campsites, canoeing, fishing	Section 10, Grayling Township
4 Mile State Forest Trail Camp	50 campsites, horse camp, horseback riding, boat launch, fishing, canoeing, hiking, wildlife viewing	9 miles southeast of Grayling, Beaver Creek Township
Hartwick Pines	100 campsites, hiking, mountain bike trails, fishing, logging museum & camp, Interpretive Center	6 miles Northeast of Grayling, Grayling Township
Keystone Landing Campground	18 campsites, canoeing, fishing, canoe launch	Section 11, Grayling Township
Kneff Lake Campground	26 campsites, boating, fishing, swimming, picnicking	7 miles southeast of Grayling, Grayling Township
Lake Margrethe Forest Campground	37 campsites, boating, swimming, fishing, boat ramp reservations available	Section 17, Grayling Township
Wakeley Lake Area Federal Forest	4 walk-in campsites, limited fishing, trails	Section 23, 10 miles southeast of Grayling
Jones Lake State Forest Campground	42 campsites, boating, swimming, fishing, small-boat ramp	Section 31, Lovells Township
Shupac Lake Campground	30 campsites, boating, boat ramp, swimming, fishing	Section 18, Lovells Township
Canoe Harbor Campground	44 campsites, canoeing, fishing, group campsites (6)	Section 32, South Branch Township
Rainbow Bend Forest Campground	6 campsites, canoeing, fishing, canoe access, canoe group camping sites	Section 3, South Branch Township
Walsh Road Equestrian Campground	Horseback riding, large group use area available by permit only,(7) sites	SW1/4 of Lovells NE, off Walsh Rd. north of East Townline Road
White Pine State Forest Canoe Camp	Open area campsite, canoe access only, fishing, wildlife viewing	Section 7, South Branch Township

Table 1.6 Private Campgrounds in Crawford County

PRIVATE RECREATIONAL CAMPGROUNDS		
Facility	Amenities	Location
River Park Campgrounds		Grayling Township
Timberly Village Campground & Mobile Home Park		City of Grayling
Happi Days Campground and Diner		Frederic, Frederic Township
The Trails Campground	63 Campsites	Frederic, Frederic Township
Yogi Bear's Jellystone Campground	218 Campsites	Grayling Township
Sno-Trac Village	60 campsites, 10 mobile homes, snowmobiling	Lovells, Lovells Township
Headwaters Camping and Cabins		Waters, Maple Forest Township
Whispering Pines	Campgrounds, Cabins and Showers	Frederic Township

Map 1.2 Crawford County Recreational Opportunities

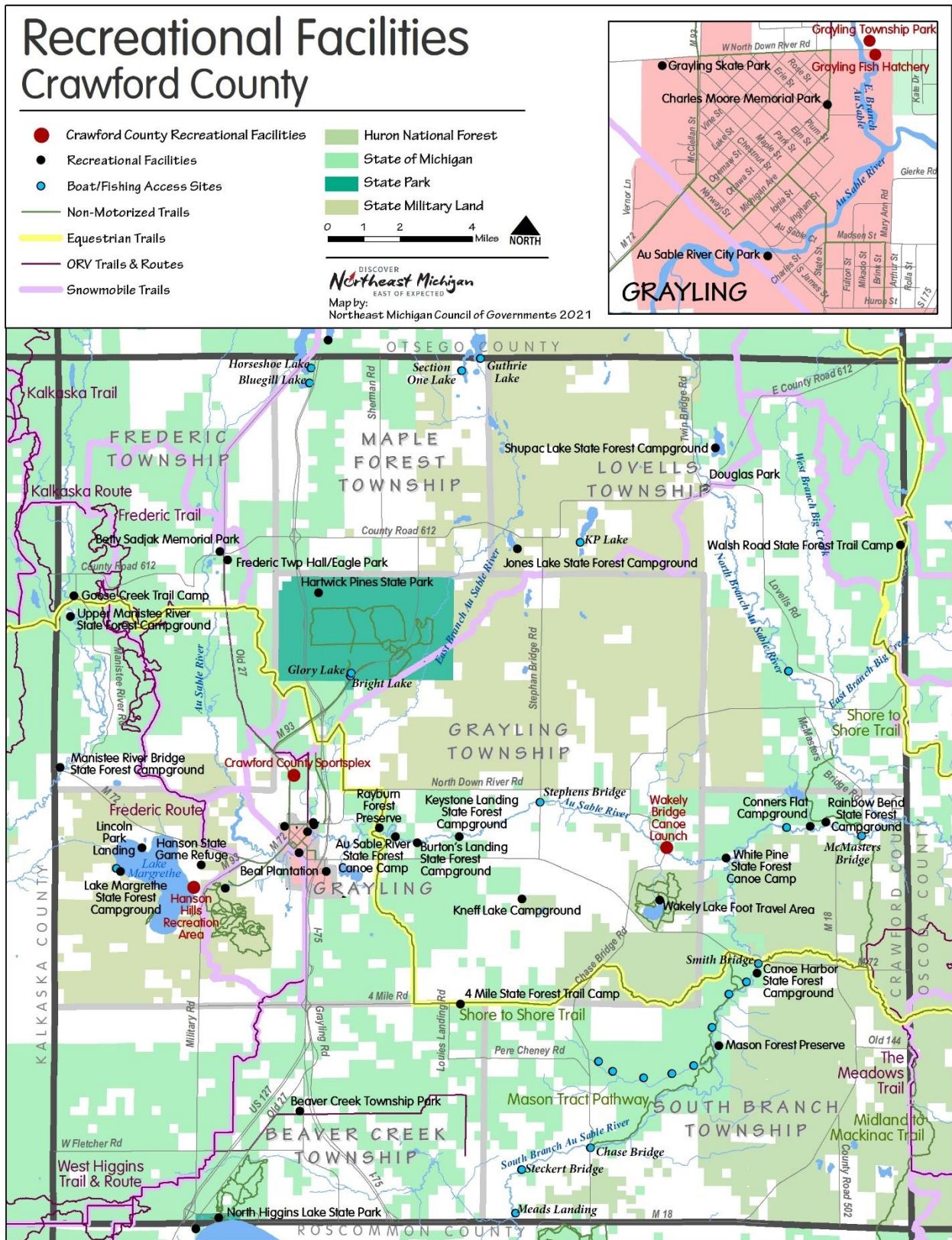
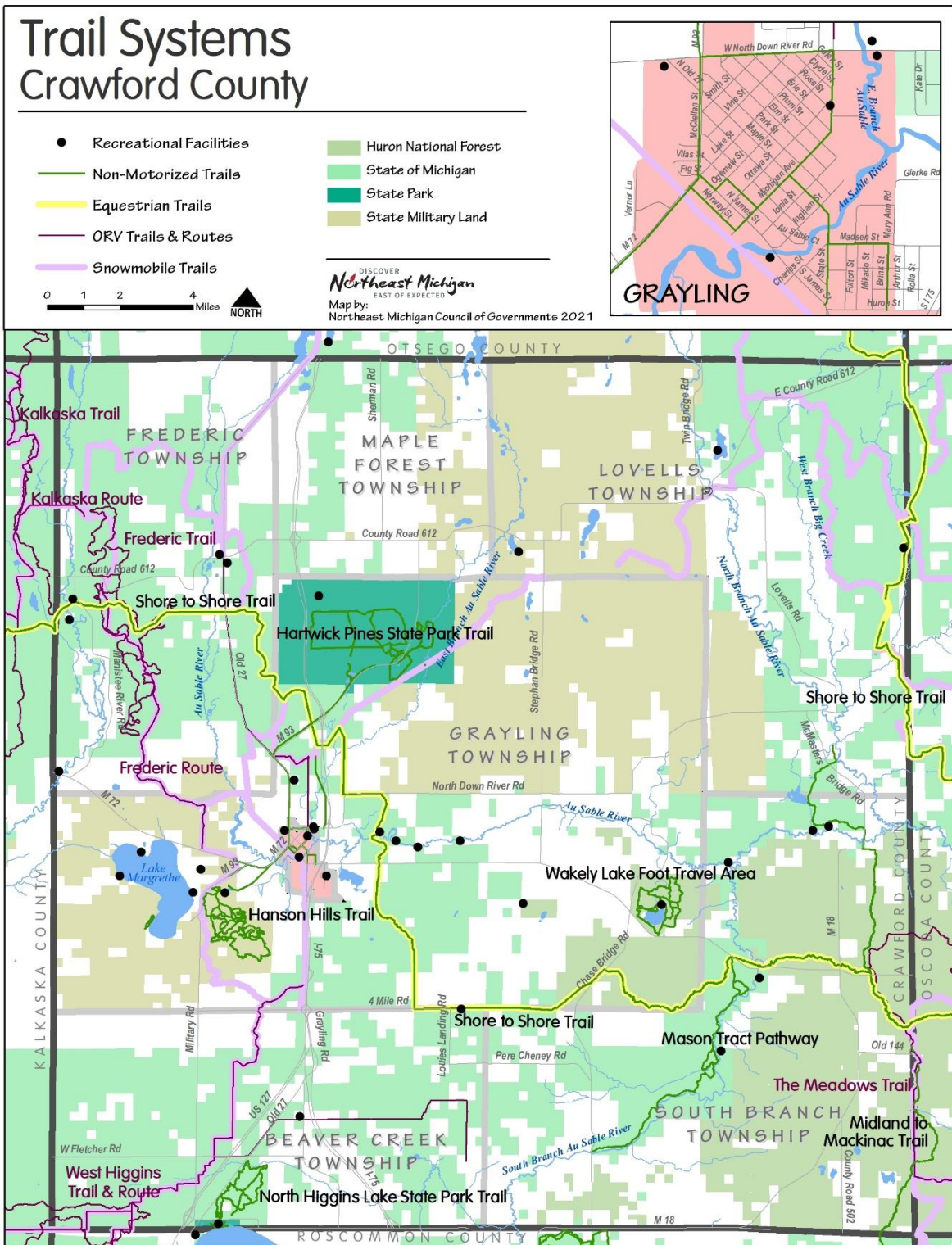


Table 1.7 Crawford County Trails

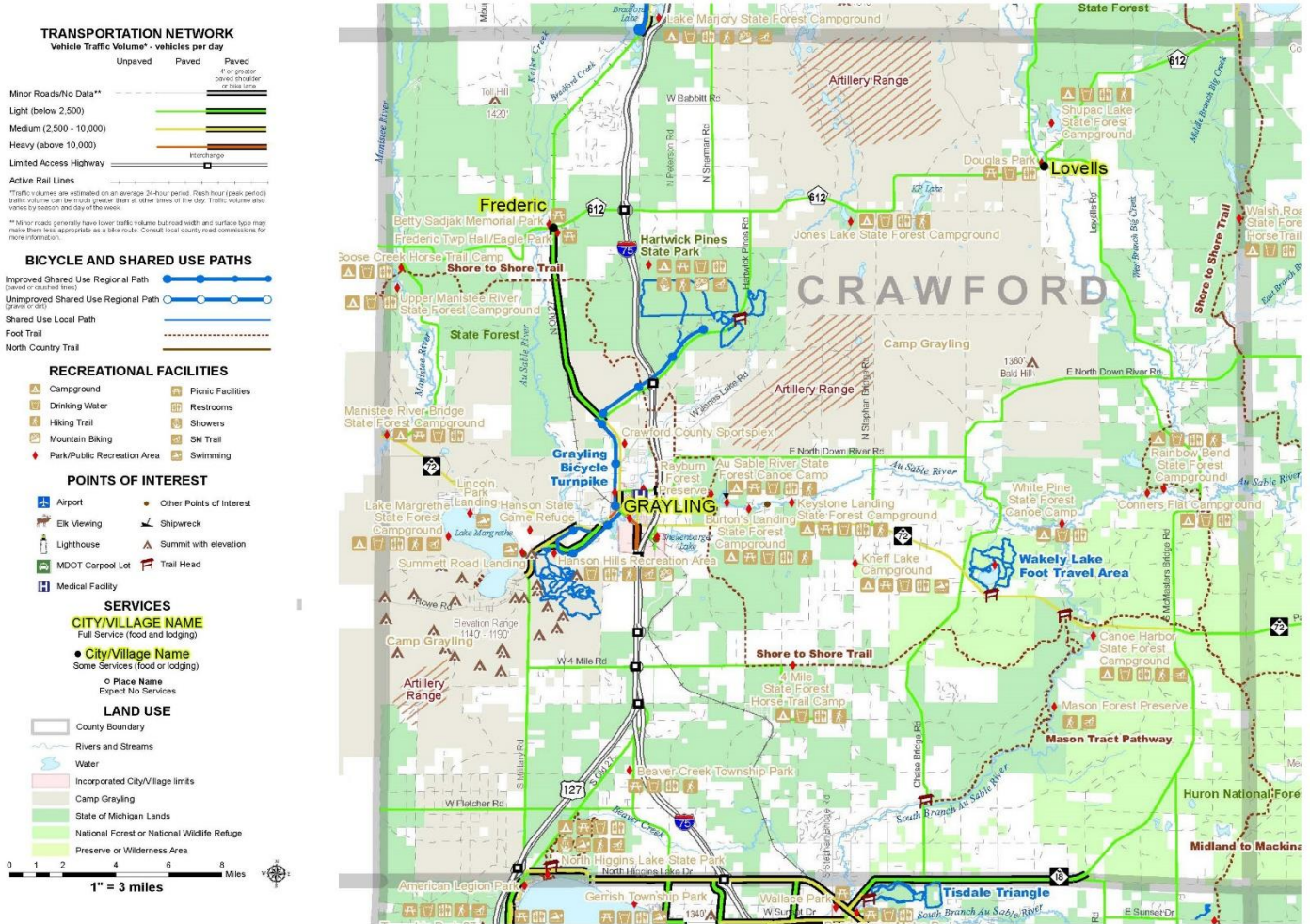
RECREATION TRAILS		
Trail	Description	Location
MULTI-USE TRAILS		
Iron Belle Trail	Statewide multi-use non-motorized trail	State of Michigan
Mason Tract Trail	Point to point hiking and cross country skiing trail along the South Branch Au Sable River	Between Chase Bridge and M72, 14 miles east of Grayling
Michigan Shore to Shore Hiking and Riding Trail	Point to point trail hiking and riding trail from Lake Huron to Lake Michigan	Parallels M-72, South Branch Twp.
Midland to Mackinac Hiking Trail	Point to point hiking and backpacking trail that extends from Midland to Mackinac City	Parallels F97, South Branch Twp.
Hanson Hills Trails	Skiing, biking, hiking	Hanson Hills Recreation Area
Hartwick Pines	Skiing, biking, hiking	Hartwick Pines State Park
Grayling Non-motorized Pathway (<i>Grayling Bicycle Turnpike</i>)	Biking, walking, running	
Wakeley Lake Trail	Skiing, hiking	National Forest Service System
ORV TRAILS		
Cycle Conservation Club ORV Trail	Motorized off road vehicle trail	Pioneer Rd, to South of Hunters Trail in Beaver Creek Twp.
West Higgins ATV Trail	Motorized off road vehicle Trail	South of Hunters Trail in Beaver Creek Twp.
The Meadows ORV Trail	Motorized off road vehicle trail	Pioneer Road, South Branch Twp.
Frederic ORV Loop	Motorized off road vehicle Trail	Frederic Twp.
Frederic ORV Route	Motorized off road vehicle Trail	Batterson Road to M 93 along N Old 27
SNOWMOBILE TRAILS		
Trail #4	Snowmobile Trail	Lovells Twp.
Trail #7	Snowmobile Trail	Frederic to Beaver Creek
Trail #9	Snowmobile Trail	Meridian Road at east boundary of South Branch Twp.
Trail # 47	Snowmobile Trail	Grayling to Lovells
Trail #79	Snowmobile Trail	M-72 to Kalkaska Co.

Trail #409	Snowmobile Trail	Lovells Twp. to Oscoda Co.
Trail #482	Snowmobile Trail	4 Mile Road to Grayling along I-75 Corridor
Trail #487	Snowmobile Trail	South east corner of Grayling Twp.
Trail #489	Snowmobile Trail	Beaver Creek Twp

Map 1.3 Crawford County Trails



Map 1.4 Northeast Region Road and Bicycle Guide 3rd Edition



Bike Trails (excerpt Northeast Region Road and Trail Bicycle Guide-3rd edition—used with permission)

Table 1.8 Recreational Boat and Fishing Access Sites in Crawford County

Recreational Boat Access Sites in Crawford County		
Access site	Amenities	Location
Bluegill Lake	15 parking spaces, toilets	Maple Forest Township
Bright Lake	15 parking spaces, toilets, Fishing pier, Recreation Passport required	Hartwick Pines State Park

Chase Bridge	10 parking spaces, toilets	Chase Bridge Rd, South Branch Twp.
Conner Flats	6 parking spaces, toilets	Connors Flats Rd. Grayling SE
Glory Lake	15 parking spaces, toilets, fishing pier, Recreation Passport required	Hartwick Pines State Park
Guthrie Lake	3 parking spaces, toilets	Maple Forest Township
High Banks	15 parking spaces, toilets	
Horseshoe Lake	5 parking spaces	Maple Forest Township
KP Lake	5 parking spaces, toilets	KP Lake Rd, Lovells NW
Lake Margrethe	30 parking spaces Recreation Passport required	Via McIntyres Landing Rd, Grayling SW
McMasters Bridge	10 parking spaces, toilets	McMaster's Bridge Rd, South Branch Twp.
Meads Landing	10 parking spaces, toilets	Steckert Bridge Rd, South Branch Twp.
Section One Lake	4 parking spaces, toilets	Maple Forest Township
Sheep Pasture	20 parking spaces, toilets	Lovells Rd., Lovells SE
Shupac Lake	Recreation Passport Required	3 miles north of Lovells on Twin Bridge and Campground Trail
Smith Bridge	12 parking spaces, toilets	M-72 and Smiths Bridge Rd., South Branch Twp.
South Branch Au Sable River Fishing Access	Multiple points of fishing access to the South Branch Au Sable River	South Branch Rd, South Branch Township
Steckert Bridge	6 parking spaces, toilets	Steckert Bridge Rd, South Branch Twp.
Stephans Bridge	15 parking spaces, toilets	

Table 1.9 Canoe Liveries in Crawford County

Canoe Liveries	
Borcher's Au Sable Canoeing	Au Sable River, Grayling
Jim's Canoe Livery	Au Sable River, Grayling
Long's Canoe Livery	Manistee River, Frederic Township
Penrod's	Au Sable River, Grayling
Carlisle Canoe Livery	Au Sable River, Grayling
Shel-Haven Canoe Rental	Manistee River, Frederic Township

Privately Owned Recreational Public Facilities

In addition to the above listed recreational opportunities, Crawford County is host to a number of other private recreational facilities including a bowling alley, boys and girls camps, golf courses, miniature golf, shooting range and a senior center. Crawford County also has numerous resorts, cabins and motels that are utilized by fishermen, hunters and other sports enthusiasts for overnight accommodations. Most of these facilities are located in and around the Grayling and Frederic area.

Regional Recreational Opportunities

The amounts and types of recreation opportunities, which are available in neighboring counties, are highly variable. All neighboring counties have an ample supply of state and/or federal lands, much of which can be used for recreational activities, including hunting, fishing, hiking, wildlife viewing, etc. The closest neighboring community to the major population of Crawford County is Roscommon (Roscommon County). Roscommon has a variety of recreational facilities including a community recreation/fitness center. They also have an outdoor ice rink, a soccer field and tennis courts.

Roscommon is approximately 15 miles from Grayling. Higgins Lake and Houghton Lake both provide recreational water opportunities.

To the north, Gaylord (Otsego County) has several recreational facilities that are open to the public. The Sportsplex offers an indoor ice rink and swimming pool. There are several ski lodges, groomed cross country ski trails, golf courses, a bowling alley and theatre complex. The travel distance from Gaylord to areas in Crawford County vary from about 20 minutes to close to one hour.

Oscoda County, to the east, is a very rural county with few recreational facilities beyond state and federal lands and campgrounds and the Au Sable River. The area does offer a major golf/cross country ski resort. The travel distance from Crawford County to Oscoda County ranges from 30 minutes to more than one hour.

Kalkaska County is located to the west of Crawford County. Located within the City of Kalkaska are a variety of recreational opportunities. The area has a roller skating rink, an archery course and a sports plex called "Kaliseum". They also have an assortment of sports teams such as Little League, soccer and softball. Kalkaska is a 30 minute drive from Grayling but is over an hour from other portions of the county.

Description of the Planning and Public Input Process

Planning Process

The update of the Recreation Plan began in the fall of 2020. The planning process included a series of public meetings with the Crawford County Planning Commission. The preliminary draft plan was posted on Northeast Michigan Council of Government website and a physical draft made available at the Crawford County Courthouse and Crawford County Library on December 13, 2021, 30 days prior to the public hearing to allow citizens ample time to review and comment on the draft plan. (Appendix A). The posting on the web and notice to the county boards and commissions helped announce the availability of the draft plan.

Crawford County held a public hearing on January 27, 2022. A legal notice was published in the Crawford County Avalanche on January 20, 2022, announcing a public hearing will be held on January 27, 2022, for adoption of the final Plan. The Recreation Plan was adopted by the Crawford County Board on January 27, 2022.

Public Input

Citizen opinion on recreation priorities is key to the development of a recreation plan. Crawford County chose to have a public input session to gather initial input. A notice was posted in the Crawford County Avalanche on November 4, 2021, for a public input session held on November 10, 2021. Additional comments were submitted via e-mail after the public input session and during the 30- day draft review. The subject of the recreation plan update, and recreational development and projects, was also discussed at several Crawford County Planning Commission meetings. Throughout the development of this recreation plan, members of key groups of the County and citizens of the County have been involved. Crawford County Planning Commission discussed coordination of multiple agencies surrounding the Fish Hatchery and grant funding sources, Sportsplex improvements, Hanson Hill improvements and general non-motorized and signage improvements at their November 10, 2021, public input session. The Planning Commission on reviewed additional public comments on the Plan, including incorporating a non-motorized path connecting the newly developed/remodeled Crawford County Commission on Aging building to downtown. (Appendix A)

Schedule Timeline

June 29 2021	County Officials contract with Northeast Michigan Council of Governments (NEMCOG) to assist in drafting a recreation/master plan for Crawford County.
July 2021	Northeast Michigan Council of Government reviewed past plan and made updates to community description, administrative structure, and recreation inventory.
August 11, 2021	NEMCOG staff met with the Planning Commission to discuss public input options.

October 13, 2021	NEMCOG Staff review updated information with the Planning Commission on community description, administrative, structure, resource inventory, etc.
October 2021	NEMCOG staff conducts on-site visits to each recreational facility in the County and conducts barrier-free assessment.
November 4, 2021	A public notice appeared in the Crawford County avalanche advertising a public input session for the Crawford County Recreation Plan to be held November 10, 2021.
November 10, 2021 December 8, 2021	A public input session is held on the Crawford County Recreation Plan. The Planning Commission voted to approve the final draft of the Crawford County Recreation Plan and to put the plan out for the 30-day review period.
December 13, 2021	The Recreation Plan was available for review. A public notice appeared on Northeast Michigan Council of Governments website, with additional postings at the Crawford County Library.
January 20, 2022	A public notice appeared in the Crawford County Avalanche advertising a public hearing to be held on January 27, 2022.
January 27, 2022	The Crawford County Board of Commissioners held a public hearing on the Recreation Plan. Any comments received from the public through e-mail, mail or in person were incorporated into the plan. The Crawford County Board of Commissioners passed a Resolution of Adoption.

Goals and Objectives

In the review of past goals and recent input, the following overall goal and component goals were developed and apply at the County level.

<i>Recreation and Public Lands</i>
<i>Preserve and improve access to public lands and water, recreation trails, public parks and recreation facilities for the safe enjoyment by residents, visitors, and future generations.</i>
ADDITIONAL COMPONENT GOALS:

1. *Pursue improvements to recreational opportunities within Crawford County .*
2. *Educate public to preserve and protect natural environment to leave better than when they arrived.*
3. *Ensure public recreational facilities and activities are open and accessible to all.*
4. *Work cooperatively with appropriate agencies and units of government to develop and maintain an extensive network of trails and the necessary support facilities for each, including hiking, biking, horseback riding, x-c skiing, snowmobiling, ORV, canoeing, kayaking fishing, alpine skiing, snowshoeing, tubing, and hunting.*
5. *Work cooperatively with appropriate agencies and units of government to establish and maintain access sites for canoe/kayak use and fishing access and promote the local water trails.*
6. *Work cooperatively to promote recreational opportunities in the area and the related economic benefits for the region, including providing support for the Trail Town initiative.*

Crawford County – Recreational Goals & Objectives

Goal 1. Renovate the Grayling Fish Hatchery Building and maintain the grounds.

Objectives

- a. Procure the funding necessary to renovate the interior of the hatchery so that it can be used by and for the community.
- b. Maintain and improve the exterior of the building and the grounds as funding becomes available.
- c. Create and maintain a walking trail through the property and onward to M-72 East.
- d. Replace current foot bridge over the Au Sable River as part of the walking path/trail
- e. Develop the balance of the property in such manner that allows for the natural beauty to be enjoyed by all throughout nature trails, parks, etc.
- f. Work with multiple agencies to develop a fish passage in order to reconnect 28 miles of the East Branch of the Au Sable for fish travel.

Goal 2. Develop the Crawford County Sports Complex so that it becomes a one-stop recreational sports facility in Crawford County.

Objectives

- a. Build up to six additional soccer fields (two soccer fields have been completed) along the northern boundary of the property.
- b. Build a series of baseball/softball fields to accommodate all levels of little league activities.
- c. Design, build and maintain a network of roads throughout the complex that maximizes safe and effective traffic flow patterns.
- d. Create the necessary parking areas so that all events may be effectively accommodated.

- e. Design and build a facility to handle all concession needs for any and all programs that are being held on site.
- f. Design and build ADA accessible restrooms for the needs of all patrons on the site.
- g. Design and build a walking path system throughout the complex for access to various facilities and exercise.
- h. Conduct a feasibility study to establish the viability of a Crawford County Community Center.

Goal 3. Develop, maintain, and improve the Wakeley Landing Property.

Objectives

- a. Maintain current access for canoeists and anglers on the property.
- b. Develop better opportunities throughout the property to accentuate the experience for canoeists and anglers.

Goal 4. Continue to expand on the non-motorized trail system within the County.

Objectives: Develop and build upon the following trails:

- a. Au Sable River Water/Bike Trail from Grayling to Oscoda
- b. Grayling Connector to North Higgins State Park thus connecting with Hartwick Pines
- c. Rayburn Property Loop North Down River Road/M-72 East
- d. Riverside Trail from Downtown to Fish Hatchery/Township Park
- e. West M-72, north side of M-72 to Old Dam Party Store then to Au Sable Trail
- f. Walk-under for Downtown Bridge
- g. Extend shoulders from Fredric to Waters
- h. Connect Camp Grayling/M-93 to North Higgins State Park
- i. M-72 West to Manistee River Road to 612 and East to Frederic
- j. CR 612 East to F-97 south to North Down River Road
- k. Sherman Road North to Marlett Road west into Waters
- l. Extend shoulders on M-72 East to Wakeley Lake and Mason Tract
- m. Separate trail extending from High School to Fredric
- n. Extend shoulder on CR 612 from Fredric to Hartwick Pines Entrance
- o. Separate Bridge crossing I-75 servicing Hartwick Pines Trail segments
- p. Trailhead parking at the beginning of Grayling Bicycle Turnpike/North Down River Road.
- q. Extended shoulders on North Down River Road
- r. Sidewalk connecting Ramada/Days Inn to Golf Course sidewalk
- s. Separate pathway, McIntyre's Landing to M-93
- t. Hartwick Pines to CR 612 to Fredric
- u. Hartwick Pines to Wilcox Bridged Red to Grayling Fish Hatchery
- v. Path connecting sports complex to city sidewalk system
- w. Path connecting Senior Center along M-72 to Brink Street

Goal 5. Work with the City of Grayling, Townships, Michigan DNR, and the U.S. Forest Service to support the implementation of the Trail Town Master Plan.

Objectives

- a. Address all types of trail systems in the Trail Towns Initiative including hiking trails, paved bike trails, off-road bike trails, ski trails, snowshoe trails, fat bike trails, ORV trails, snowmobile trails and water trails.
- b. Improve connectivity of all trail systems to the City of Grayling and other key areas of the County
- c. Improve trail signage.
- d. Make information about Crawford County trails systems readily available.
- e. Address the issue of maintaining public walkways during the winter months.
- f. Promote the “trail-friendly” nature of the County

Grayling Recreation Authority – Recreational Goals & Objectives

Goal 1. Pursue improvements to recreational opportunities that are not currently available within the County.

Objectives

- a. Expand recreational facilities within Hanson Hill Recreation Area.
- b. Upgrade the winter sports equipment and facilities
- c. Continue to maintain and enhance the physical appearance of the park.
- d. Continue to add to recreational trail system for all season activities.

Goal 2. Ensure County sponsored recreation facilities and activities are open and accessible to all members of the public regardless of age, race, handicap, etc.

Objectives

- a. New construction will meet barrier free accessibility requirements for the parks.

Action Program

The following action program is presented by jurisdiction including the proposed projects and rationale for each. These lists were developed by each jurisdiction in consideration of input received from the Recreation Stakeholders group and other public input received. The public input summaries are available under separate cover.

Table 1.10 Crawford County Capital Improvement Schedule

CRAWFORD COUNTY CAPITAL IMPROVEMENTS SCHEDULE				
Project #	Project	Est. Cost	Funding Source(s)	Priority

1	Renovate the Fish Hatchery Building	\$1,500,000	DNR, Local & Private	High
2	Work with multiple agencies to reconnect 28 miles of the East Branch of the Au Sable for fish travel.	\$50,000	DNR, Local & Private	Medium
3	Replace foot bridge over the East Branch of the Au Sable River behind the hospital	\$5,000	DNR, Local & Private	Low
4	Construct Soccer Fields	\$50,000	DNR, Local & Private	Medium
5	Construct Baseball/Softball fields	\$200,000	DNR, Local & Private	Medium
6	Construct Paved Roads through sports complex	\$500,000	DNR, Local & Private	Medium
7	Construct paved parking areas @ sports complex	\$250,000	DNR, Local & Private	Low
8	Construct Concession Stand @ sports complex	\$25,000	DNR, Local & Private	Medium
9	Construct Public Restrooms @ sports complex	\$50,000	DNR, Local & Private	High
10	Construct walking path system @sports complex	\$100,000	DNR, Local & Private	Medium
11	Au Sable River Water/Bike Trail from Grayling to Oscoda	Unknown	DNR, Local & Private	Medium
12	Grayling Connector to North Higgins State Park thus connecting with Hartwick Pines	Unknown	DNR, Local & Private	Medium
13	Rayburn Property Loop North Down River/M- 72 East	Unknown	DNR, Local & Private	Medium
14	Riverside Trail from Downtown to Fish Hatchery/Township Park	Unknown	DNR, Local & Private	Medium
15	West M-72 north side of M-72 to Old Dam Party Store then to Au Sable Trail	Unknown	DNR, Local & Private	Medium
16	Walk-under for Downtown Bridge	Unknown	DNR, Local & Private	Medium

17	Extended shoulders from Frederic to Waters	Unknown	DNR, Local & Private	Medium
18	Connect Camp Grayling/M-93 to North Higgins State Park	Unknown	DNR, Local & Private	Medium
19	M-72 West to Manistee River Road to CR612 and East to Frederic	Unknown	DNR, Local & Private	Medium
20	CR612 East to F97 south to North Down River Road	Unknown	DNR, Local & Private	Medium
21	Sherman Road North to Marlett Road west into Waters	Unknown	DNR, Local & Private	Medium
22	Extend shoulders on M-72 East to Wakeley Lake and Mason Tract	Unknown	DNR, Local & Private	Medium
23	Separate trail extending from High School to Frederic	Unknown	DNR, Local & Private	Medium
24	Extended shoulder on CR 612 from Frederic around to Hartwick Pines Entrance	Unknown	DNR, Local & Private	Medium
25	Separate bridge crossing I-75 servicing Hartwick Pines Trail segments	Unknown	DNR, Local & Private	Medium
26	Trailhead parking at beginning of Grayling Bicycle Turnpike/North Down River	Unknown	DNR, Local & Private	Medium
27	Extended shoulders on North Down River Road	Unknown	DNR, Local & Private	Medium
28	Sidewalk connecting Ramada/Days Inn to Golf Course sidewalk	Unknown	DNR, Local & Private	Medium
29	Separate pathway, McIntyre's Landing to M-93	Unknown	DNR, Local & Private	Medium
30	Sidewalk connecting sports complex to city sidewalk system	Unknown	DNR, Local & Private	Medium
31	Improve connectivity of ORV and snowmobile trails to the City of Grayling and key points in the County	Unknown	DNR, Local & Private	Medium

32	Improve trail signage for all trails (motorized, non-motorized, ski trails, snowshoe and water trails)	Unknown	DNR, Local & Private	High
33	Improve trailhead amenities	Unknown	DNR, Local & Private	Medium
34	Maintain public walkways during winter months	Unknown	Local, Private	High
35	National Recognition of the Au Sable River	Unknown	Local, Private	Medium
36	Improve interconnected recreation/fitness trails surrounding Crawford County Commission on Aging	Unknown	DNR, Local, Private	Medium
37	Construct outdoor pickleball and shuffle board courts near the Crawford County Commission on Aging Building.	Unknown	DNR, Local, Private	Medium

Table 1.11 Crawford County Rationale

Project #	Justification
1	Completes a long standing project and allows a historical site to be used by the community
2	Current bridge is in disrepair and needs to be replaced for safety reasons
3	New soccer fields will provide a recreational asset to the community and align themselves in the same location as other recreational sports facilities
4	New baseball/softball fields will provide a recreational asset to the community and align themselves in the same location as other recreational sports facilities
5	Paved roadways will provide a more finished complex along with protecting the adjoining assets of the complex
6	Paved roadways will provide a more finished complex along with protecting the adjoining assets of the complex
7	One concession facility to serve all organizations and events would be efficient and economical
8	Restrooms will be a priority with the amount of pedestrian traffic by participants and spectators visiting the sports complex

9	Improve access to sports complex facilities and provide a safe environment for exercise
10	Improvement and expansion of the existing trail system only enhances our community to its residents and visitors
11	Improvement and expansion of the existing trail system only enhances our community to its residents and visitors
12	Improvement and expansion of the existing trail system only enhances our community to its residents and visitors
13	Improvement and expansion of the existing trail system only enhances our community to its residents and visitors
14	Improvement and expansion of the existing trail system only enhances our community to its residents and visitors
15	Improvement and expansion of the existing trail system only enhances our community to its residents and visitors
16	Improvement and expansion of the existing trail system only enhances our community to its residents and visitors
17	Site Improvements at the Commission on Aging enhance the overall health for all community members.

Table 1.12 Grayling Recreational Authority Capital Improvement Schedule

GRAYLING RECREATION AUTHORITY CAPITAL IMPROVEMENTS SCHEDULE			
Project #	Project	Est. Cost	Funding Source(s)
1	Nordic Trail Groomer/Snowmobile	15,000	Local, Private Foundation
2	Snow Making Guns(Upgrades)	\$40,000	DNR, Local, Private Foundation
3	Installation of Tubing Hill Lift, Electrical and Snowmaking	\$75,000	DNR, Local, Private Foundation
4	Construction of Outdoor Pavilion (Little Smokey Site)	\$12,000	DNR, Local, Private Foundation
5	Replacement of Fire Suppression System in Main Lodge Kitchen	\$7,000	DNR, Local, Private Foundation
6	Industrial Mower	\$9,000	DNR, Local, Private Foundation
7	Purchase of New/Used ¾ ton Truck with snowplow	\$15,000	DNR, Local, Private Foundation

8	Winter Sports Rental Equipment	\$30,000	DNR, Local, Private Foundation
9	Terrain Park Obstacles/Equipment	\$6,000	DNR, Local, Private Foundation
10	PDGA and Pine Knoll Disc Golf Course Expansion	\$20,000	DNR, Local, Private Foundation

Table 1.13 Grayling Recreational Authority Rationale

Project #	Justification	Table 1.11
1	A snowmobile will increase the efficiency and labor spent on trail grooming.	
2	Additional Snowmaking guns will ensure that ski runs have adequate amounts of snow coverage for the safety of the participants.	
3	The installation of a second lift and electrical and water for snowmaking capability will allow a greater volume of customers to enjoy tubing activities.	
4	A multi-purpose pavilion will allow for more public/family events and allow participants to have shelter from the elements.	
5	The installation of a Cooking Hood Fire Suppression System at Hanson Hills Recreation Area's Main Lodge Building, to prevent potential personal injury, and prevent loss or significant damage to kitchen equipment and/or Lodge Building.	
6	An industrial mower will allow for efficient mowing of grounds and athletic fields.	
7	The purchase of a new/used Plow Truck will allow for efficient snow removal processes and will help reduce costly repairs of older equipment.	
8	The availability of winter sports rental equipment is needed service to the customers.	
9	Terrain Park obstacles will allow participants a variety of different technical challenges and to practice freestyle skills.	
10	The expansion of Disc Golf Courses will allow for increased participation and provide an ideal tournament destination.	
11	The replacement of siding, windows and doors on the Main Lodge facility will help to increase the heating efficiency, outside aesthetics, decrease the cost of repairs/maintenance and detour nesting bats.	
12	A snowmobile will increase the efficiency and response time for the ski patrol.	
13	Lighting the Nordic ski trails, and the walking trail will allow for night use by residents/visitors who cannot use them at other times.	
14	Lighting the Softball field will allow for league expansion.	
15	Bridge and docks will allow participants better access for fishing & recreational purposes.	
16	The construction of new outdoor bathroom will allow GRA to create a barrier free facility.	
17	The expansion of athletic fields will allow for more adult sports leagues and children's programs.	
18	The purchase of a new/used Downhill Groomer will allow for efficient Grooming Practices and will help to reduce costly repairs of older equipment.	

Crawford County Basis for Action

Crawford County has 2,132 residents age 5 to 19 based on the 2019 American Community Survey (ACS), accounting for nearly 13.3 percent of the total population. Based on the 2,132 younger residents, a need is shown for expansion and improvements at the Crawford County Sportsplex and further expansion of Grayling Recreational Authority facility for additional recreational opportunities to serve the youth and nearly 13,892 people living in Crawford County.

Ambulatory disability is any impairment that prevent or impedes walking. Crawford County has 10.5% of its population having ambulatory difficulty, with 20.4% of residents having some sort of disability. Crawford County will continue to expand upon non-motorized trail system for all residence and continuation of ADA compliant parks, trails, and recreational areas to assure that the need of all residents is met.

Crawford County is centrally location with I-75 intersecting the County northerly & southerly and M-72 intersecting easterly and westerly. Being Centrally located with major thoroughfares provides tourists and pedestrians with many recreational opportunities within the County.

Of the 360,000 acres in Crawford County, almost 70% of it is publicly-owned. Many of the more than 14,000 people that live in this community do so because of the abundance of public land. Certainly, many of the visitors to Crawford County throughout the year are here for that very reason. It is for this purpose that the County must make the most of its recreational activities. The more the County improves its recreational activities for those that live here and those that visit, the more it will grow as a community, economically & culturally. Crawford County already boasts many hunting and fishing opportunities. However, for its size, the County also has excellent non-motorized trail opportunities to go along with canoeing, hiking, skiing, snowshoeing and biking excursions waiting to be experienced. There exists a county-wide voted millage to preserve and enhance the prospects of our recreational challenges.

Hatchery

The old Grayling Fish Hatchery has been a source of pride and nostalgia for many residents over the years. Deeded to the County under a public use deed, it was operated by the Grayling Recreational Authority as a fund raiser for many summers. The Grayling Fish Hatchery operation was taken over by a private contractor under the agreement that it remain open to the public. In the past, grant dollars have been secured to reconstruct the raceways, enhance the grounds, create a children's fishing pond along with a storm water retention pond. The building has had its roof replaced, the cupola restored, and the exterior completely painted. It is now in need of a complete interior restoration. Once complete, the building could be utilized by a public agency, community service agency or historical preservation group. It could also potentially be converted to a museum of area history. In any event, the once abandoned and dilapidated building would regain its past luster and become a center of community activity once again.

The fish hatchery grounds provide even more opportunities for trips through nature. There are occasional trails that follow the river up until the foot bridge. There are limitless opportunities to expand these trails on site and connect with other trails leading to various points of interest in the County. The fish hatchery grounds also have a dam to maintain water levels in the fish hatchery races. Construction of a fish ladder around the dam will reconnect 28 miles of the East Branch of the Au Sable River to the lower river habitat.

Sports Complex

Years ago, this parcel was deeded to the County by the State in order to allow the community a place to hold its county fair. As time passed and interest waned in the fair, the property began to be used as a center for sporting events, such as football, mud bogs and equestrian activities. Although open and utilized by the community, the Crawford County Board of Commissioners has recognized the potential for this site to be a “one-stop-shopping” for community sporting events that are not sponsored by the public school system. The vision for this site would be to host the bulk of the community sporting leagues such as football, soccer, baseball, etc. as well as a place for safe walking/running. We believe, if designed well, the various groups could capitalize on the economies of scale that occur when the organizations share one large site.

Wakeley Landing

This is a relatively small parcel on the mainstream of the Au Sable that is used frequently by canoeists and anglers alike. The County maintains this site in a somewhat rustic fashion, but the site could easily be made to be more accommodating in the future for the benefit of all.

Motorized and Non-Motorized Trails

Crawford County currently enjoys a host of hiking, biking, cross country skiing, snowshoeing, ORV, snowmobile, and water trails. Grayling Township enjoys a section of Iron Belle Trail along the I-75 corridor and near the new Kirtland Community College. This will be a primary non-motorized recreation and transportation corridor.

In addition, the City of Grayling has sidewalks on virtually every city street that allows numerous people to walk wherever they would like in the community. That said, opportunities still exist for new trails and improvements to existing trail systems. The City of Grayling has developed a Trail Town Master Plan to further enhance these recreation resources. The Trail Town Initiative is intended to meet the needs of the trail users by providing: 1) physical amenities that support trail users such as signage, trail information, wide sidewalks, drinking fountains, and benches, and 2) business amenities to support daytrip and overnight trail users such as a bike shop, kayak outfitter, ice-cream shop, hotels and restaurants. The Recreation Plan Proposed pathway projects are consistent with the Northeast Michigan Regional Non-Motorized Transportation Plan and Investment Strategy.

Appendix A - Publication Information & Comments

Public Notice

The Grayling Housing Commission announces that on 10-28-2021 the PHA shall make available for public review a draft of components of its 2022

Annual Agency Plan and Capital Fund Grant, 2022 Housing Choice Voucher Administrative Plan, and 2022 Admissions and Continued Occupancy Policy.

The documents will be available for review Monday through Friday 1 :00 pm to 4:00 pm at the PHA office located at 308 Lawndale, Grayling, MI 49738.

On December 14th, 2021 at 6:00pm a public hearing will be held at 305 Lawndale Grayling, MI to receive any public comments prior to the plans' finalization and submission to HUD.

Public Notice

The Crawford County Planning Commission will hold a Public Input Session to gather public input for the Crawford County Parks and Recreation Plan.

The Following details the Meeting:

Location: Crawford County Emergency Operations Building, 200 W. Michigan Ave., Grayling, MI 49738

**Next to the Courthouse*

Date: November 10, 2021

Time: 1 p.m.

This notice is posted in compliance with the Open Meetings Act, Public Act 267 of 1976, as amended, MCL 41.72(2) and (4), and the Americans with Disability Act.

PUBLIC NOTICE

**Deadline for submission of Legal,
Public & Bid Notices is
5 p.m. the Friday prior to publication.**

**Please submit all notices via email to
legals@crowfordcountyavalanche.com**

Crawford County Recreation Plan x +

Not secure | discovernortheastmichigan.org/article.asp?ait=nv&nid=554

Apps Windows Imported From IE IntelliGrants - Login USDANRCS:Geosp... IntelliGrants - Login College Navigator... Download data by... NEMCOG Remote... Reading list

COUNCIL OF GOVERNMENTS MICHIGAN WORKS! PROSPERITY COLLABORATIVE DOCUMENT LIBRARY

DISCOVER **Northeast Michigan** EAST OF EXPECTED

Business Hot Job Profiles Jobseekers Community Agencies COVID Data

[Home / News / Crawford County Recreation Plan 30-Day Review](#)

Crawford County Recreation Plan 30-Day Review

Notice is hereby given to any and all interested parties that Crawford County is seeking public comment on the Five-Year 2022-2026 Parks and Recreation Master Plan.

Electronic copy of the Plan can be viewed on the NEMCOG website:
http://www.discovernortheastmichigan.org/downloads/crawford_county_recreation_plan_draft_2.pdf

A physical copy of plan is available at the **Crawford County Library**, 201 Plum St., Grayling, Mi, 49738.

AND

a physical copy is also available at the **Crawford County Building** Located at 200 W Michigan Ave, Grayling, Mi, 49738.

The required 30-day public review and comment period will begin on December 13, 2021 and will end on January 12, 2022.

Crawford County residents are asked to submit comments in writing via email to xcrisjones@gmail.com or via mail to Cris Jones, Crawford County Planning Commission, at 200 W Michigan Ave, Grayling, Mi, 49738.

A follow-up public hearing will take place at 200 W Michigan Ave, Grayling, Mi, 48738 for the Crawford County Board of Commissioner meeting on January 27, 2022 at 10am. Any and all input is greatly appreciated.

Created on Monday, December 13, 2021

NEMCOG Michigan Works! Michigan Works Northeast ... 6 likes

PUBLIC NOTICE

Deadline for submission of Legal, Public & Bid Notices is 5 p.m. the Friday prior to publication.

Please submit all notices via email to legals@crawfordcountyavalanche.com

Public Hearing Notice Crawford County Recreation Plan

Crawford County Board of Commission will hold a public hearing on the Crawford County Recreation Plan 2022-2026 draft Plan. The meeting will take place at Crawford County Building, located at 200 W Michigan Ave, Grayling, Michigan, 49738 on Thursday, January 27, 2022 at 10 am. The draft plan contains an action plan for Crawford County from 2022-2026. The draft plan is available for review at the Crawford County Building, Crawford County Public Library and Northeast Michigan Council of Government website:

www.discovernortheastmichigan.org/downloads/crawford_county_recreation_plan_draft_2.pdf

Written comments may be submitted to:
 Cris Jones - xcrisjones@gmail.com or 200 W Michigan Ave, Grayling, Mi, 49738

From: Alice Snyder <director@crawfordcoa.org>
Sent: Thursday, January 27, 2022 8:56 AM
To: Paul Compo <pcompo@crawfordco.org>
Subject: RE: Crawford County Recreation Plan

I have no idea what's available. Off the top of my head, I'm thinking outdoor pickleball courts and shuffle board. Developing a fitness trail with exercise stations on the property. And then there is the need for the sidewalk to extend which could be construed as a bike path.

Alice Snyder, Director



From: Susan & Ken <thielrouston@gmail.com>
Sent: Monday, December 27, 2021 1:38 PM
To: Wayne Koppa <wkoppa@hotmail.com>; Nico Tucker <ntucker@nemcog.org>; Doug Baum <dbaum@cityofgrayling.org>; Alice Snyder <director@crawfordcoa.org>; Gregory Kinser <kinserg@michigan.gov>; Donny Babcock <dabcbawford1215@gmail.com>
Subject: RE: County Rec Plan Plan

Hi Nico,
Attached is a copy of the plan where I inserted comments and suggestions. Some of my concerns are the same as Wayne's. It appears they took other plans and updated them and missed some updates. For example, the distance from Lake Michigan and Lake Huron is incorrect and I question how relevant that is. Instead, why don't they emphasize being centrally located in lower Michigan, easily accessed via I-75, US 27, and M-72. The central location and easy freeway access to large populations downstate is something unique to Crawford County. I also noted there are many recreational sites in the county that are missing from their inventory tables. I can easily provide a list of missing sites if needed.

Wayne is correct on updating the emphasis on outdoor trails and facilities. Particularly with pandemic creating increased demand for outdoor opportunities for trails and camping and the younger generations looking for experiential opportunities. They pretty much captured many of the projects the Pathway Committee is working on, but missed Designation of the AuSable as a water trail. If that could be included, that would allow us to pursue grant money to develop a plan to have the AuSable designated as a water trail, and it may address emergency services desires for improved marker system to identify stretches of the river.

In your earlier email you stated none of the townships wanted to be included as a joint plan. Is it too late at this point for the plan to encompass any of the townships if they are interested in having this plan represent them? If it is too late re: them joining this plan, is there a way for them to take a completed county plan and pass a resolution and do their own public input session to follow the county plan and use it as their recreational plan? I'm not sure how this all integrates with townships. I would think if a county has a comprehensive plan that townships approve, this one plan could serve as a recreation plan for any grant applications applied for by the county or township. Is my thought process correct? Or are the missing townships out of luck at this point? Susan

From: Wayne Koppa
Sent: Monday, December 27, 2021 7:14 AM
To: Susan & Ken; Nico Tucker; Doug Baum; Alice Snyder; Gregory Kinser; Donny Babcock
Subject: County Rec Plan Plan

Nico I am on vacation and went thru your draft county rec plan quickly. Lost momentum in the last few pages on priorities.

Page 3. 35 miles from Lake Michigan and 55 miles from Lake Huron does not sound right. More like 60 and 80.

Page 7. Crawford County Sub Committee. We are not a sub committee to another committee. We were originally formed by the Chamber of Commerce and stayed that way. County did not have active committee. Don't believe they have parks and rec identified in their county commissioner responsibilities. Grayling Rec has there hands full with Hanson Hills.

Don't know if City has a Parks and Rec committee anymore. Thought they folded it into employee responsibilities. Check with Doug.

Canoe Marathon should be listed as the Au Sable River International Canoe Marathon (A.R.I.C.M.)

Page 13. There is a West Higgins ORV Trail. There is also a Michigan Cross Country Cycle Trail (MCCCT). It is not an ORV or ATV trail, it is for motorcycles that are off road capable and street legal.

Page 21. item o is done. Please replace with non-motorized deck expansion on North Down/I-75 overpass.

Add connection of backside of Hartwick Pines to CR 612 and then to Frederic to have a loop connection from Hartwick Pines to Frederic.

Add connection along Wilcox Bridge Rd. from Hartwick Pines to Grayling to provide a loop connection to Grayling.

The Fish Hatchery is under lease to the Anglers of the AuSable so your numerous initiatives for that area may not be consistent with the responsibilities outlined in that arrangement. Don't know.

Under City of Grayling initiatives something to the effect of "finish city sidewalk system to include north side of M-72 West to Old Dam, Ramada and Days Inn need to be connected to the golf course sidewalk and town needs to be connected the new Senior Center on M-72 East.

Generally, the priorities need to be shuffled to place emphasis on connecting DNR facilities such as Rayburn, Hartwick Pines, McIntyre's Landing (State Campground) with population areas in the county and finishing the sidewalk system. I know there has been a lot of emphasis on programs for the trigger and hook people but the priorities have changed according to the SCORP (State Comprehensive Outdoor Recreation Plan), people want trails and safe places to walk.

If you rework this I would like to see the next draft.

Wayne Koppa

Appendix B – Resolutions, Minutes, & Transmittal Letters

RESOLUTION Adopting the 2022 CRAWFORD COUNTY RECREATION PLAN 1272022 – RP

WHEREAS, Crawford County has developed a five-year Parks and Recreation Plan which describes the physical features, existing recreation facilities, and desired actions to be taken to improve and maintain recreation facilities during the five-year period that begins in 2022 and ends on December 31, 2026; and

WHEREAS, the plan has been developed in accordance with the Michigan Department of Natural Resources requirements for a Community Recreation Plan; and

WHEREAS, a notice of a public input session was published on November 3, 2021 in the Crawford County Avalanche. The public input session was held on November 10, 2021, to provide an opportunity for citizens to share ideas and express opinions regarding the future of parks and recreation in Crawford County; and

WHEREAS, a draft Recreation Plan was Made available for review and public comments for 30-days at the Crawford County Library, Crawford County Courthouse and Northeast Michigan Council of Governments website:

<http://www.discovernortheastmichigan.org/article.asp?ait=nv&nid=554>

WHEREAS, a public hearing with the Crawford County Board of Commissioners was held on January 27, 2022 at 10am, in the Crawford County Building, 200 W Michigan Ave, Grayling, Michigan, 49738 to provide an opportunity for citizens to express opinions, ask questions, and discuss all aspects of the Parks and Recreation Plan; and

NOW, THEREFORE BE IT RESOLVED, on January 27, 2022 that the Crawford County Board of Commissioners hereby adopts said Parks and Recreation Plan as a guideline for recreation improvements for Crawford County.

APPROVED AS TO FORM

Commissioner Jamison Yes Commissioner McClain Yes

Commissioner Gray Yes Commissioner Powers Yes

Commissioner Pinkelman Yes Commissioner Jansen Yes

Commissioner Lewis Yes

ADOPTED DATE: January 27, 2022

I, Sandra Moore, Clerk of the Crawford County Board of Commissioners and Clerk of the County of Crawford, do hereby certify that the above Resolution was duly adopted by the said Board on January 27, 2022.

IN TESTIMONY WHEREOF, I have hereunto set my hand and affixed the seal of said County and Court at Grayling, Michigan, on this 27th day of January, 2022.



Shelly Pinkelman, Chair
Crawford County Board of Commissioners



Sandra M. Moore
Clerk/ROD

Crawford County

Office of the Administrator

Paul C. Compo
Administrator/Controller
pcompo@crawfordco.org
Phone: (989) 344 – 3202

Lori Sheltrown
Payroll and Payables
lsheltrown@crawfordco.org
Phone: (989) 344 – 3216

Fax: (989) 348 – 5743
200 W. Michigan Avenue * Grayling, MI 49738

January 27, 2022

Crawford County Planning Commission
200 W. Michigan Ave.
Grayling, MI 49738

RE: Crawford County Recreation Plan 2022-2026

Dear Commissioners:

Enclosed is a final copy of the Crawford County Recreation Plan 2022-2026 adopted by the Crawford County Board on January 27, 2022. This Plan is being submitted per the requirements of the Michigan Department of Natural Resources - Grants Management Division.

If you have any questions regarding the plan, please contact me at 989-344-3202 or by email at pcompo@crawfordco.org

Sincerely,



Paul Compo
County Administrator
Crawford County

Enclosure

Crawford County

Office of the Administrator

Paul C. Compo
Administrator/Controller
pcompo@crawfordco.org
Phone: (989) 344 – 3202

Lori Sheltroun
Payroll and Payables
lseltroun@crawfordco.org
Phone: (989) 344 – 3216

Fax: (989) 348 – 5743
200 W. Michigan Avenue * Grayling, MI 49738

January 27, 2022

Diane Rekowski
Executive Director
Northeast Michigan Council of Governments
PO Box 457
Gaylord, MI 49734

RE: Crawford County Recreation Plan 2022-2026

Dear Diane:

Enclosed is a final copy of the Crawford County Recreation Plan 2021-2025 adopted by the County Board on January 27, 2022. This Plan is being submitted per the requirements of the Michigan Department of Natural Resources - Grants Management Division.

If you have any questions regarding the plan, please contact me at 989-344-3202 or by email at pcompo@crawfordco.org

Sincerely,



Paul Compo
County Administrator
Crawford County

Enclosure

POST COMPLETION SELF-CERTIFICATION REPORT - CONT'D

Is maintenance scheduled on a regular basis? If yes, give schedule. If no, please explain. Yes No
site is being visited periodically for maintenance. Not regularly scheduled.

GENERAL

Is a Program Recognition plaque permanently displayed at the site? If yes, please provide a photograph. (Not required for Bond Fund Grants) Yes No N/A

Is any segment of the general public restricted from using the site or facilities? (i.e. resident only, league only, boaters only, etc.) If yes, please explain. Yes No

Is a fee charged for use of the site or facilities? If yes, please provide fee structure. Yes No

What are the hours and seasons for availability of the site?
24/7



COMMENTS (ATTACH SEPARATE SHEET IF MORE SPACE IS NEEDED)

Empty space for comments.

POST COMPLETION SELF-CERTIFICATION REPORT - CONT'D

CERTIFICATION

I do hereby certify that I am duly elected, appointed and/or authorized by the Grantee named above and that the information and answers provided herein are true and accurate to the best of my personal knowledge, information and belief.

<u>Paul Compo</u> Please print	<u></u> Grantee Authorized Signature	<u>1/26/22</u> Date
<u>Eric Szymanski</u> Please print	<u></u> Witness Signature	<u>1/26/22</u> Date

Send completed report to: **POST COMPLETION GRANT INSPECTION REPORTS
GRANTS MANAGEMENT
MICHIGAN DEPARTMENT OF NATURAL RESOURCES
PO BOX 30425
LANSING MI 48909-7925**

Wakeley Bridge Landing – Project No. – 26-00776





Michigan Department of Natural Resources - Grants Management

**PUBLIC OUTDOOR RECREATION GRANT
POST-COMPLETION SELF-CERTIFICATION REPORT**

*This information required under authority of Part 19, PA 451 of 1994, as amended;
the Land and Water Conservation Fund Act of 1965, 78 Stat. 897 (1964); and Part 715, of PA 451 of 1994, as amended.*

GRANT TYPE: MICHIGAN NATURAL RESOURCES TRUST FUND CLEAN MICHIGAN INITIATIVE
(Please select one) LAND AND WATER CONSERVATION FUND RECREATION PASSPORT BOND FUND

GRANTEE: Crawford County

PROJECT NUMBER: BF91-295 **PROJECT TYPE:** Development

PROJECT TITLE: Hanson Hills Recreation Area

PROJECT SCOPE: Mechanical snowmaking equipment

To Be Completed By Local Government Agency (Grantee)

Name of Agency (Grantee) Crawford County	Contact Person Paul Compo	Title Administrator
Address 200 W Michigan Ave	Telephone 989-344-3202	
City, State, ZIP Grayling, Mi, 49738	Email pcompo@crawfordco.org	

SITE DEVELOPMENT

Any change(s) in the facility type, site layout, or recreation activities provided?
If yes, please describe change(s). Yes No

Has any portion of the project site been converted to a use other than outdoor recreation? If yes, please describe what portion and describe use. (This would include cell towers and any non-recreation buildings.) Yes No

Are any of the facilities obsolete? If yes, please explain. Yes No

SITE QUALITY

Is there a park entry sign which identifies the property or facility as a public recreation area?
If yes, please provide a photograph of the sign. If no, please explain. Yes No

Are the facilities and the site being properly maintained? If no, please explain. Yes No

Is vandalism a problem at this site? If yes, explain the measures being taken to prevent or minimize vandalism. Yes No

POST COMPLETION SELF-CERTIFICATION REPORT - CONT'D

Is maintenance scheduled on a regular basis? If yes, give schedule. If no, please explain. Yes No
Site has full time employee on site performing all needed maintenance

GENERAL

Is a Program Recognition plaque permanently displayed at the site? If yes, please provide a photograph. (Not required for Bond Fund Grants) Yes No N/A

Is any segment of the general public restricted from using the site or facilities? (i.e. resident only, league only, boaters only, etc.) If yes, please explain. Yes No

Is a fee charged for use of the site or facilities? If yes, please provide fee structure. Yes No
Access to the site is allowed. Seasonal rates apply for skiing and tubing activities.

What are the hours and seasons for availability of the site?
The site operates year round. Activities include skiing, tubing, cross country skiing,

COMMENTS (ATTACH SEPARATE SHEET IF MORE SPACE IS NEEDED)

Disc golf, softball, etc

POST COMPLETION SELF-CERTIFICATION REPORT - CONT'D

CERTIFICATION

I do hereby certify that I am duly elected, appointed and/or authorized by the Grantee named above and that the information and answers provided herein are true and accurate to the best of my personal knowledge, information and belief.

<u>Paul Compo</u> Please print	<u><i>Paul Compo</i></u> Grantee Authorized Signature	<u>1/26/22</u> Date
<u>Eric Szymanski</u> Please print	<u><i>Eric Szymanski</i></u> Witness Signature	<u>1/26/22</u> Date

Send completed report to: **POST COMPLETION GRANT INSPECTION REPORTS
GRANTS MANAGEMENT
MICHIGAN DEPARTMENT OF NATURAL RESOURCES
PO BOX 30425
LANSING MI 48909-7925**



Michigan Department of Natural Resources - Grants Management

**PUBLIC OUTDOOR RECREATION GRANT
POST-COMPLETION SELF-CERTIFICATION REPORT**

*This information required under authority of Part 19, PA 451 of 1994, as amended;
the Land and Water Conservation Fund Act of 1965, 78 Stat. 897 (1964); and Part 715, of PA 451 of 1994, as amended.*

GRANT TYPE: MICHIGAN NATURAL RESOURCES TRUST FUND CLEAN MICHIGAN INITIATIVE
(Please select one) LAND AND WATER CONSERVATION FUND RECREATION PASSPORT BOND FUND

GRANTEE: Crawford County

PROJECT NUMBER: TF00-146

PROJECT TYPE: Site Development

PROJECT TITLE: Grayling Fish Interpretive Center

PROJECT SCOPE: Development of Interpretive Center, river restoration, etc

TO BE COMPLETED BY LOCAL GOVERNMENT AGENCY (GRANTEE)

Name of Agency (Grantee) Crawford County	Contact Person Paul Compo	Title Administrator
Address 200 W Michigan Ave	Telephone 989-344-3202	
City, State, ZIP Grayling, Mi, 49738	Email pcompo@crawfordco.org	

SITE DEVELOPMENT

Any change(s) in the facility type, site layout, or recreation activities provided?
If yes, please describe change(s). Yes No

Has any portion of the project site been converted to a use other than outdoor recreation? If yes, please describe what portion and describe use. (This would include cell towers and any non-recreation buildings.) Yes No
Limited commercial aquaculture activities

Are any of the facilities obsolete? If yes, please explain. Yes No

SITE QUALITY

Is there a park entry sign which identifies the property or facility as a public recreation area?
If yes, please provide a photograph of the sign. If no, please explain. Yes No

Are the facilities and the site being properly maintained? If no, please explain. Yes No

Is vandalism a problem at this site? If yes, explain the measures being taken to prevent or minimize vandalism. Yes No

POST COMPLETION SELF-CERTIFICATION REPORT - CONT'D

Is maintenance scheduled on a regular basis? If yes, give schedule. If no, please explain. Yes No
Site is being maintained and operated by a private enterprise.

GENERAL

Is a Program Recognition plaque permanently displayed at the site? If yes, please provide a photograph. (Not required for Bond Fund Grants) Yes No N/A

Is any segment of the general public restricted from using the site or facilities? (i.e. resident only, league only, boaters only, etc.) If yes, please explain. Yes No

Is a fee charged for use of the site or facilities? If yes, please provide fee structure. Yes No
When hatchery is open to public with a nominal charge to cover maintenance costs of the park.

What are the hours and seasons for availability of the site?
Memorial Day - Labor Day

COMMENTS (ATTACH SEPARATE SHEET IF MORE SPACE IS NEEDED)

Empty box for comments.

POST COMPLETION SELF-CERTIFICATION REPORT - CONT'D

CERTIFICATION

I do hereby certify that I am duly elected, appointed and/or authorized by the Grantee named above and that the information and answers provided herein are true and accurate to the best of my personal knowledge, information and belief.

<u>Paul Compo</u> Please print	<u><i>Paul Compo</i></u> Grantee Authorized Signature	<u>1/26/22</u> Date
<u>Eric Szymansti</u> Please print	<u><i>Eric Szymansti</i></u> Witness Signature	<u>1/26/22</u> Date

Send completed report to: **POST COMPLETION GRANT INSPECTION REPORTS
GRANTS MANAGEMENT
MICHIGAN DEPARTMENT OF NATURAL RESOURCES
PO BOX 30425
LANSING MI 48909-7925**

Grayling Fish Interpretive Center – Project No. TF00-146





Michigan Department of Natural Resources - Grants Management

**PUBLIC OUTDOOR RECREATION GRANT
POST-COMPLETION SELF-CERTIFICATION REPORT**

*This information required under authority of Part 19, PA 451 of 1994, as amended;
the Land and Water Conservation Fund Act of 1965, 78 Stat. 897 (1964); and Part 715, of PA 451 of 1994, as amended.*

GRANT TYPE: MICHIGAN NATURAL RESOURCES TRUST FUND CLEAN MICHIGAN INITIATIVE
(Please select one) LAND AND WATER CONSERVATION FUND RECREATION PASSPORT BOND FUND

GRANTEE: Crawford County

PROJECT NUMBER: 26-01713 (2011)

PROJECT TYPE: Site Development

PROJECT TITLE: County Sports Complex

PROJECT SCOPE: Acces Paths, Little League Fields, Site Work, Permit Fees

To BE COMPLETED BY LOCAL GOVERNMENT AGENCY (GRANTEE)

Name of Agency (Grantee) Crawford County	Contact Person Paul Compo	Title Administrator
Address 200 W Michigan Ave	Telephone 989-344-3203	
City, State, ZIP Grayling Mi, 48738	Email pcompo@crawfordco.org	

SITE DEVELOPMENT

Any change(s) in the facility type, site layout, or recreation activities provided?
If yes, please describe change(s). Yes No

Has any portion of the project site been converted to a use other than outdoor recreation? If yes, please describe what portion and describe use. (This would include cell towers and any non-recreation buildings.) Yes No

Are any of the facilities obsolete? If yes, please explain. Yes No

SITE QUALITY

Is there a park entry sign which identifies the property or facility as a public recreation area?
If yes, please provide a photograph of the sign. If no, please explain. Yes No

Are the facilities and the site being properly maintained? If no, please explain. Yes No

Is vandalism a problem at this site? If yes, explain the measures being taken to prevent or minimize vandalism. Yes No

POST COMPLETION SELF-CERTIFICATION REPORT - CONT'D

Is maintenance scheduled on a regular basis? If yes, give schedule. If no, please explain. Yes No
Grounds are maintained on a regularly basis including lawn mowing and general maintance typically done in the summer months.

GENERAL

Is a Program Recognition plaque permanently displayed at the site? If yes, please provide a photograph. (Not required for Bond Fund Grants) Yes No N/A

Is any segment of the general public restricted from using the site or facilities? (i.e. resident only, league only, boaters only, etc.) If yes, please explain. Yes No

Is a fee charged for use of the site or facilities? If yes, please provide fee structure. Yes No

What are the hours and seasons for availability of the site?

Park is open year round.

COMMENTS (ATTACH SEPARATE SHEET IF MORE SPACE IS NEEDED)

Empty space for comments.

POST COMPLETION SELF-CERTIFICATION REPORT - CONT'D

CERTIFICATION

I do hereby certify that I am duly elected, appointed and/or authorized by the Grantee named above and that the information and answers provided herein are true and accurate to the best of my personal knowledge, information and belief.

<u>Paul Compo</u> Please print	<u><i>Paul Compo</i></u> Grantee Authorized Signature	<u>1/26/22</u> Date
<u>Eric Szymansti</u> Please print	<u><i>Eric Szymansti</i></u> Witness Signature	<u>1/26/22</u> Date

Send completed report to: **POST COMPLETION GRANT INSPECTION REPORTS
GRANTS MANAGEMENT
MICHIGAN DEPARTMENT OF NATURAL RESOURCES
PO BOX 30425
LANSING MI 48909-7925**

County Sports Complex – Project No. 26-01713

