

what is the JLUS program?

The Joint Land Use Study (JLUS) process promotes and enhances civilian and military communication and collaboration, serves as a catalyst to sustain the military mission, and promotes public health, safety, quality of life, and economic viability of a region. Source: Department of Defense (DOD) Office of Economic Adjustment (OEA), <http://oea.gov/what-we-do/compatible-use>

where are we in the process?

The JLUS and the JLUS Public Participation Plan have been completed. Please consult the JLUS website at <http://www.discovernortheastmichigan.org/jlus.asp> to view the report and associated information.

what happens next?

NEMCOG will collaborate with JLUS Implementation Team members to begin working on compatibility strategies and action plan items.

JLUS implementation team

This is a critical piece of the success of this JLUS. The team should include membership from each participating agency, the project technical committee (TC), the project policy committee (PC), and military personnel. The strategies developed throughout the JLUS process should allow local government leaders and military personnel to roll JLUS recommendations into their existing programs.

A communications plan, zoning tools, and long-range planning are some cost-effective solutions that are part of the action plan presented in Section 4 of this JLUS. This is not a regulatory document and thus cannot mandate action, only propose solutions. Success in implementing the strategies described in this plan depends on dedicated efforts from the stakeholders in the coming years.

This JLUS is meant to be a living document, so certain strategies may need to be revisited in the future as the local situation and applicable laws evolve.

contact information

NEMCOG |

Denise Cline (dmcline@nemcog.org)
Diane Rekowski (drekowski@nemcog.org)
Nico Tucker (ntucker@nemcog.org)

Camp Grayling JMTC | SFC Jeremie Mead (jeremie.a.mead.mil@mail.mil)

Alpena CRTC | Capt. Brian Blumline (brian.g.blumline.mil@mail.mil)

Tetra Tech |

Heather Mendenall (heather.mendenall@tetrattech.com)
Matt Rathsack (matt.rathsack@tetrattech.com)

more project information

Additional project information and the full JLUS report can be found at

<http://www.discovernortheastmichigan.org/jlus.asp>

camp grayling joint maneuver training center
alpena combat readiness training center

joint land use study

camp grayling JMTC



DISCOVER
Northeast Michigan
EAST OF EXPECTED



TETRA TECH

final submittal | january 2019

This document was funded by the Office of Economic Adjustment, part of the Department of Defense; the Northeast Michigan Council of Governments is the sponsoring agency.

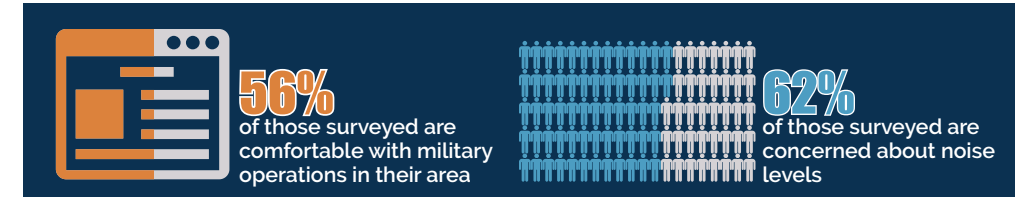
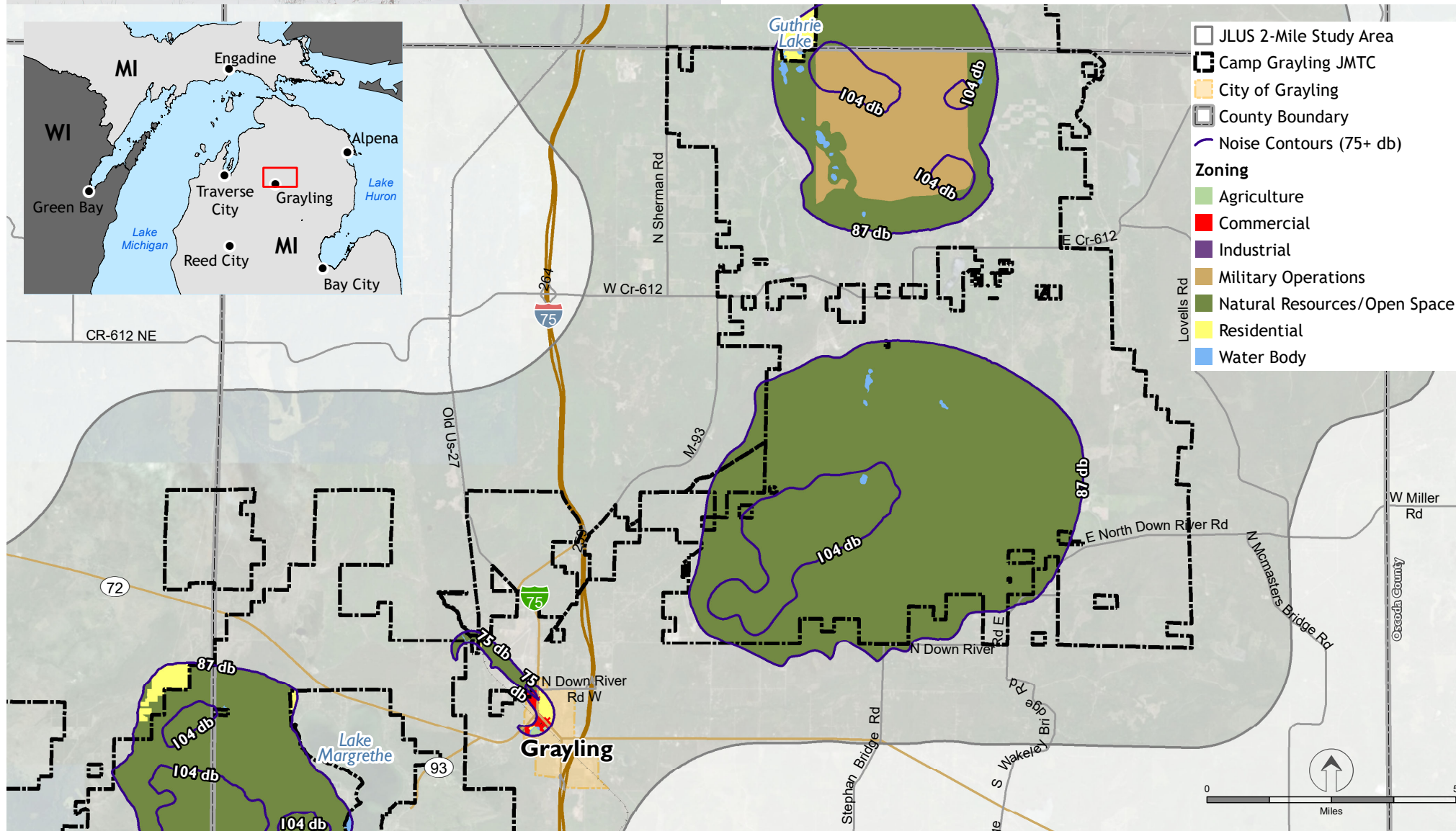


about camp grayling JMTC

Camp Grayling JMTC is the largest National Guard training center in the country, encompassing 147,000 acres. It supports a wide cross-section of military personnel, including active-duty and National Guard forces. It provides a large ground training area, an air-to-ground range, and a large airspace all in the same complex. Nonmilitary organizations as well as international partners also use the ranges and other facilities there.

about the surrounding area

Camp Grayling JMTC is located in the largely rural north-central portion of Michigan's Lower Peninsula. This study focuses on the installation itself and a two-mile buffer around the boundary. Compatible land use analysis was limited to the study area. Though encroachment issues are few due to the low surrounding population, it is critical that the military and the public coexist.



top issues

Public meetings, an online survey, and one-on-one interviews were some of the methods used to collect public input and determine the largest positive and negative aspects of military operations in the area. The issues that repeatedly came up in the Camp Grayling JMTC area were:

- ▶ **NOISE AND MILITARY OPERATIONS:** Several residential areas are in or near noise contours from military operations, and most of the heart of the City of Grayling lies in the accident potential zone from Grayling Army Airfield.
- ▶ **ROADS:** Public perception links degraded roads with military activity, when weather, logging, and other traffic may have an impact on road condition.
- ▶ **WILDFIRE DANGER:** Wildfires occur frequently in this heavily wooded region. Communication about controlled burns and fire mitigation activities by the Michigan Department of Natural Resources doesn't always reach the public.

JLUS implementation team action plan

Many of the JLUS strategies have actions that overlap. To capture the best use of plan implementation, overarching actions have been defined that will ultimately serve more than one strategy. The JLUS Implementation Team would be charged with tracking these items. See Section 4 of the JLUS for more information.

| ACTION | STRATEGIES |
|--|--|
| Create Sensible Military Overlay Zones around Camp Grayling JMTC | 1a.4, 1a.5, 2a.1, 2a.2, 2d.1, 2d.2, 5b.4, 6a.1 |
| Commission a Joint MDNR and Camp Grayling JMTC Landscape Plan | 1b.1, 1b.2, 1b.3, 4e.1 |
| Conduct a Noise Study | 1a.1, 1a.2, 1a.3, 2a.2, 2c.1, 2c.2, 2c.3 |
| Commission a Camp Grayling JMTC Installation Master Plan | 2c.2, 2c.3, 2d.1, 2d.2, 3d.1, 3f.2, 4a.1, 4a.2, 4c.1, 4d.1, 5b.5, 6b.4 |
| Update Grayling Area Transportation Study | 4d.1, 4d.2, 4d.3, 4d.4, 4e.1, 4f.1, 4f.2, 5b.5 |
| Camp Grayling JMTC Community Outreach and Community Council | 2b.1, 2c.1, 3a.1, 3b.1, 3e.1, 3f.1, 3f.2, 4e.1, 5a.1, 5a.2, 5a.3, 5a.4, 5b.1, 5b.2, 5b.3, 5b.4, 5b.5, 6a.1 |
| Commission a Water Resources Plan for Northeast Michigan | 3a.1, 3b.1, 3c.1, 3c.2, 3f.1, 3f.2 |
| Fire Protection Services Agreement | 3e.1, 6b.1 |
| Conduct an Economic Impact Study | 6a.1, 6b.1, 6b.2, 6b.3, 6b.4, 6c.1, 6c.2 |